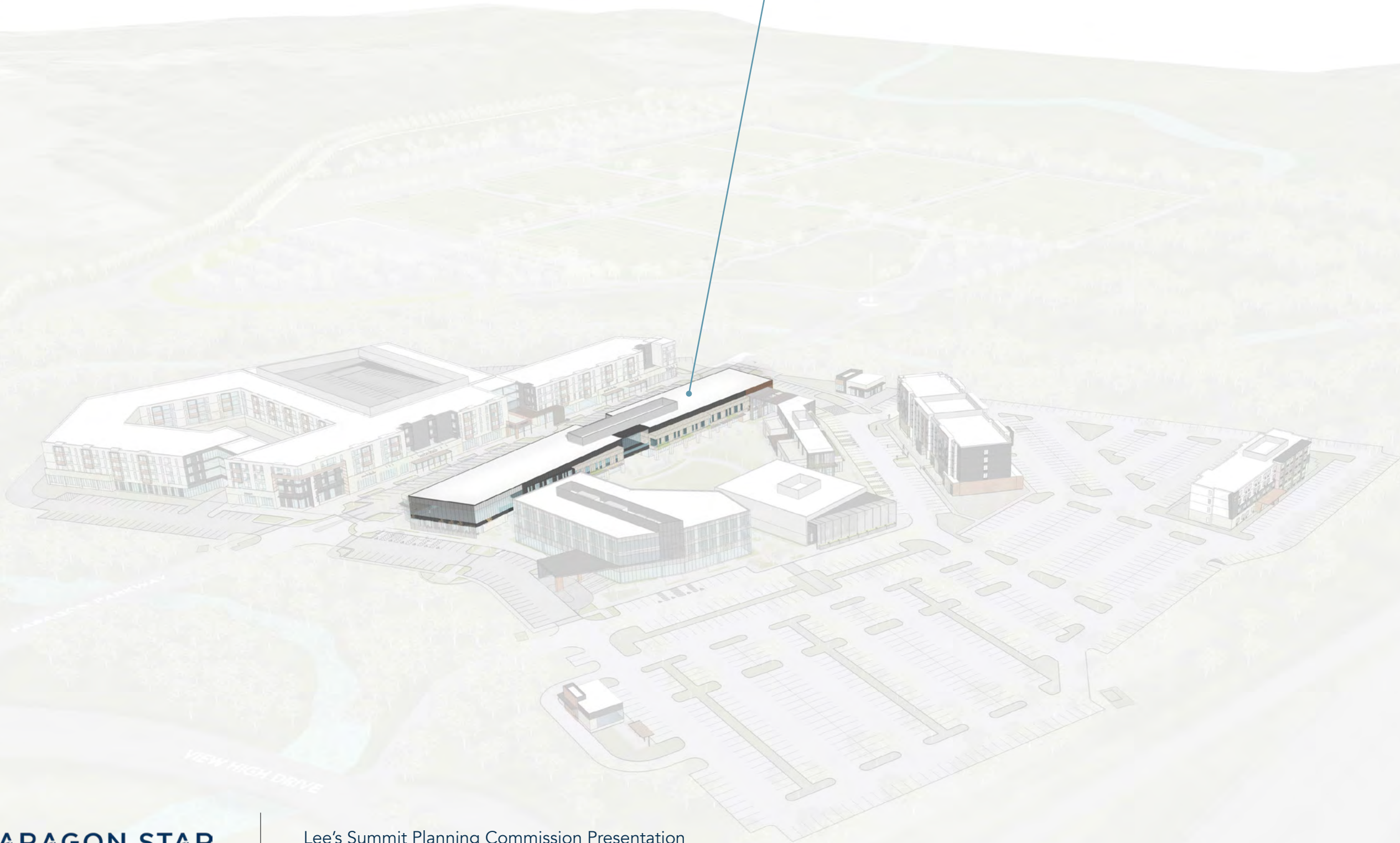


GENERAL OFFICE

SIZE: 2ND LEVEL OF 2 STORIES
35,000 SF

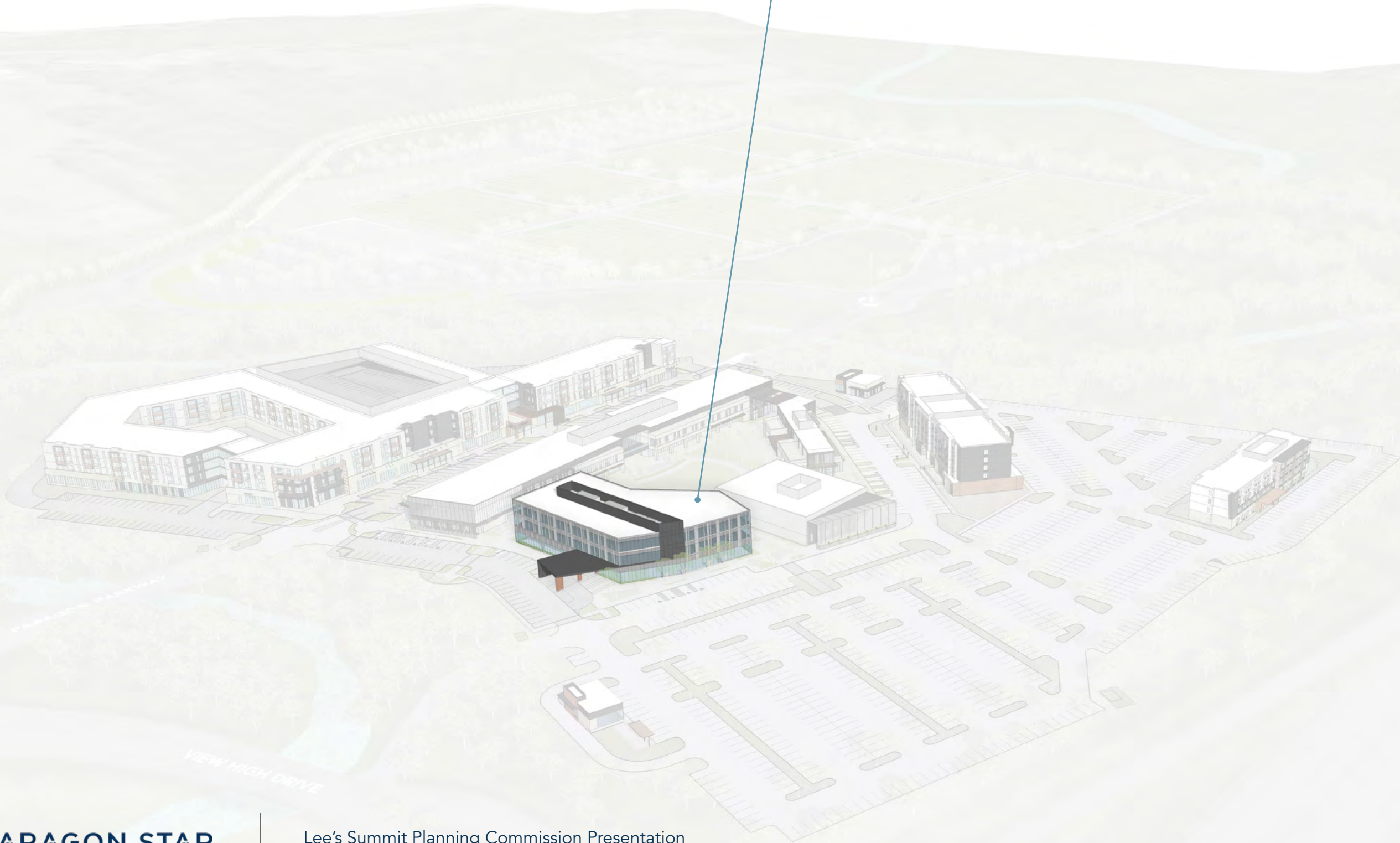
AMENITIES: PRIVATE SECOND-LEVEL BALCONY OVER-LOOKING THE PLAZA



MEDICAL OFFICE BUILDING

SIZE: 3 STORY
60,000 SF

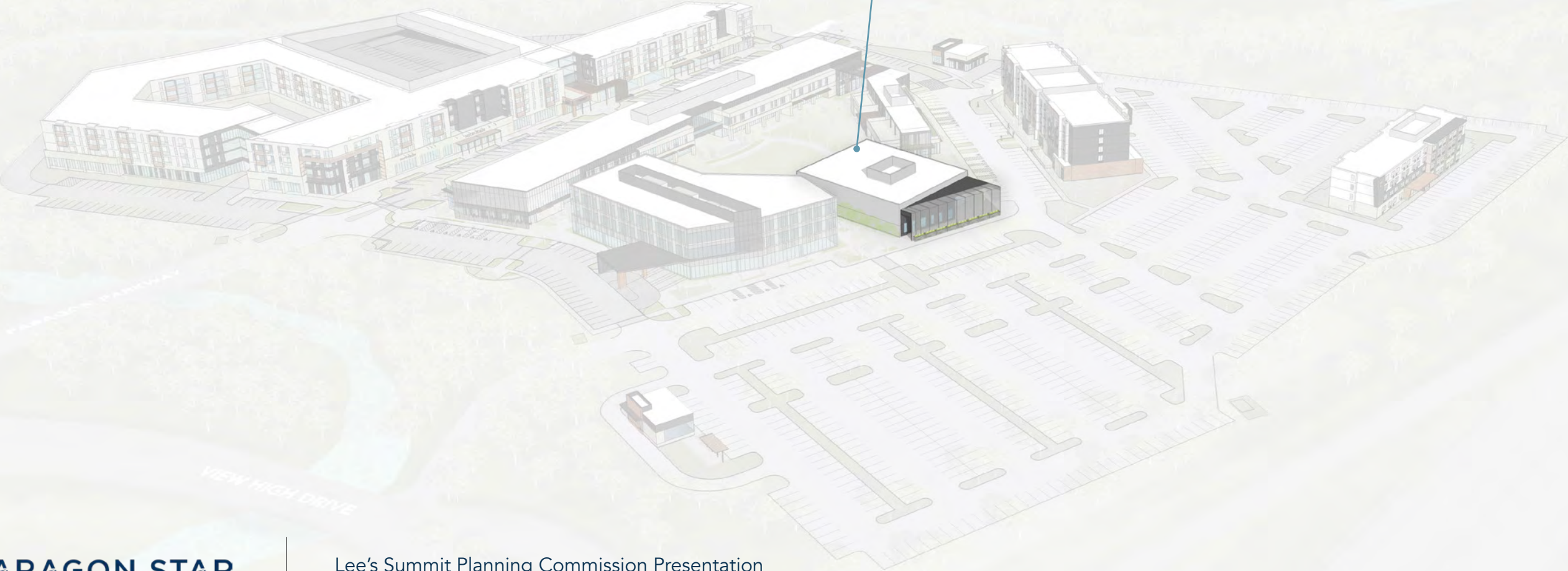
AMENITIES: COVERED VEHICULAR DROP-OFF AREA



ENTERTAINMENT VENUE

SIZE: 1 STORY
12,000 SF

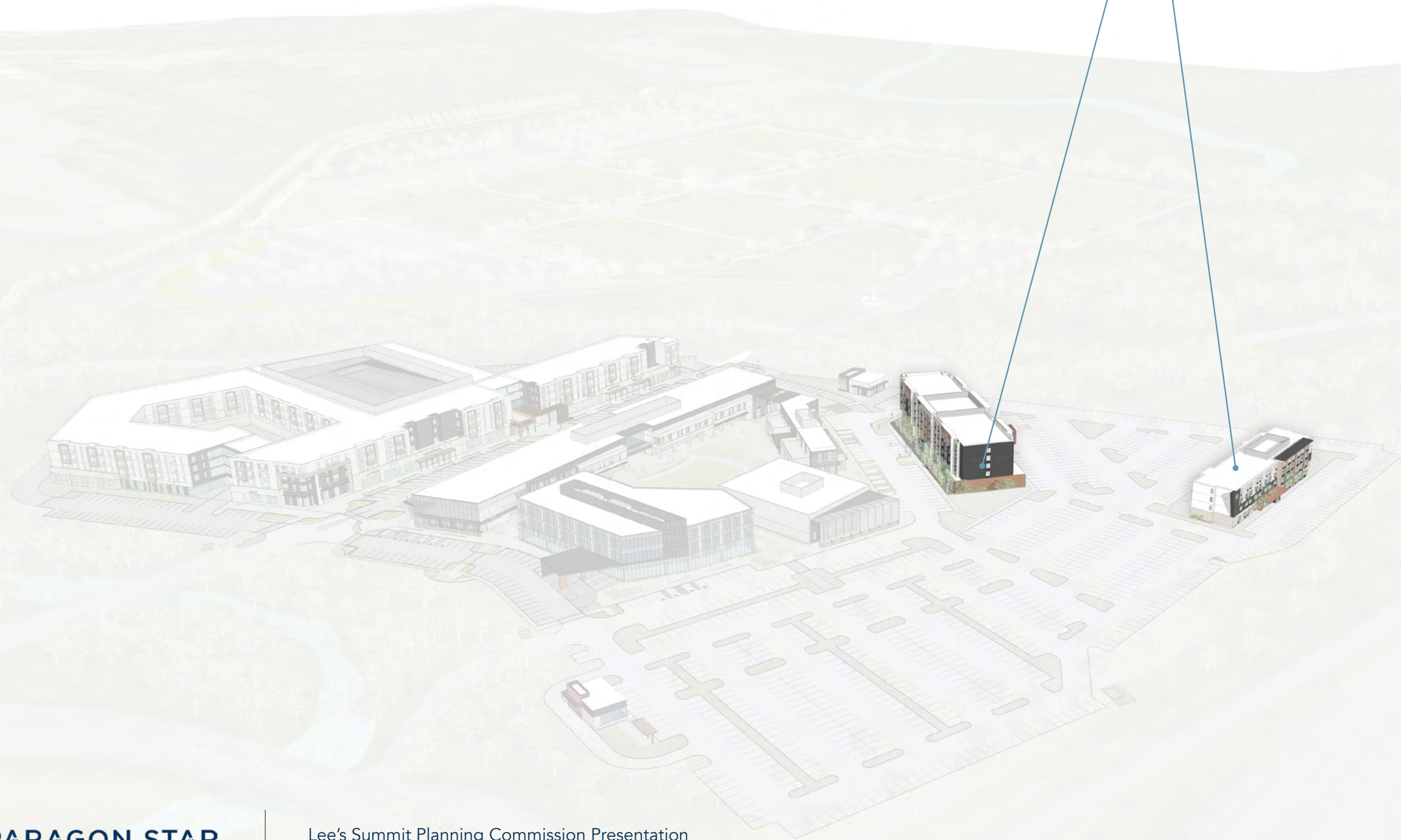
AMENITIES: DOUBLE-SIDED INDOOR / OUTDOOR STAGE
PRIVATE RENTABLE EVENT SPACE WITH
EXCLUSIVE EXTERIOR PATIO



HOTELS

HOTEL 1: 5 STORIES
134 ROOMS

HOTEL 2: 4 STORIES
98 ROOMS



01 PROJECT SITE

02 BUILDING TYPES

03 PARKING

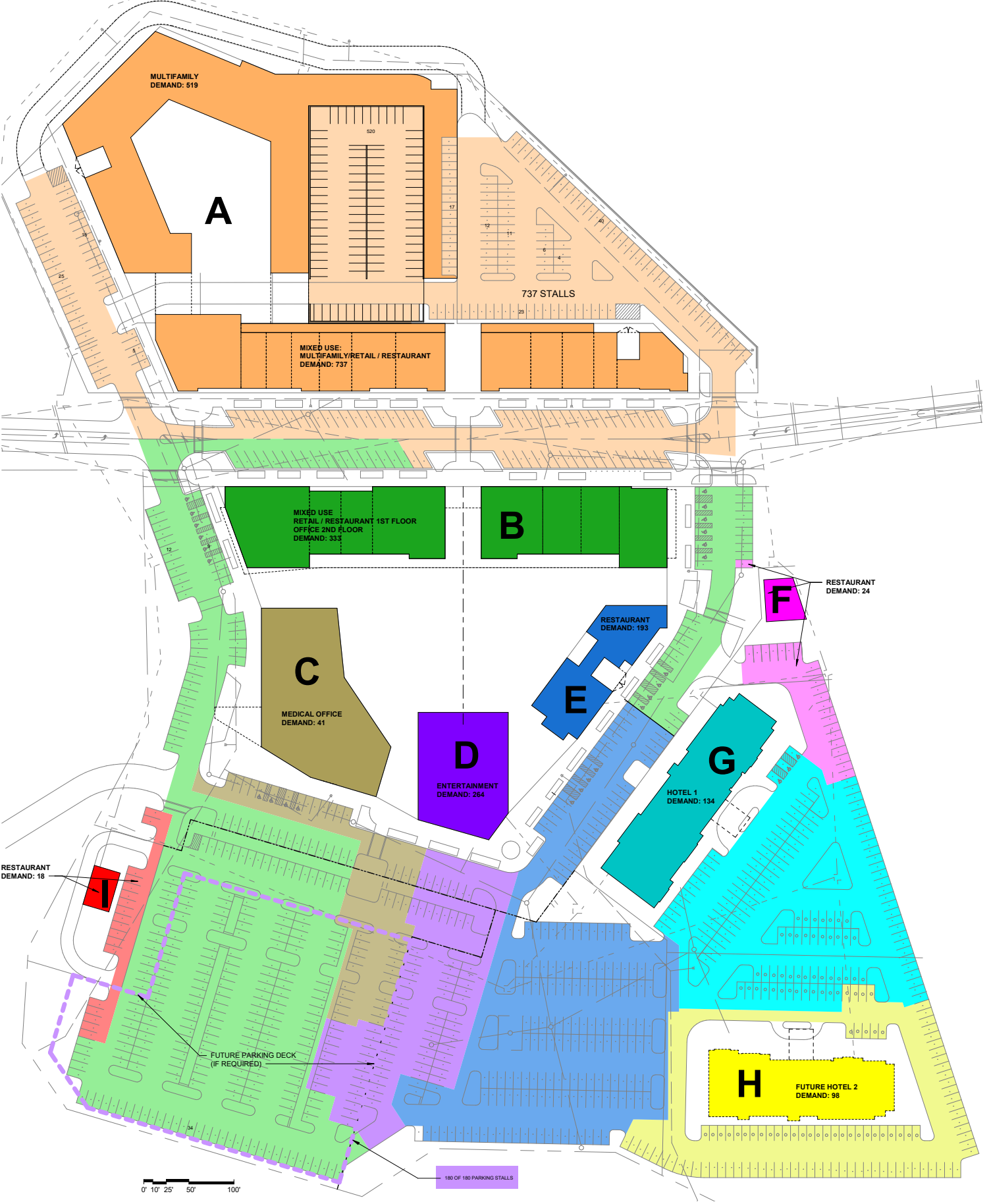
04 DEVELOPMENT PRECEDENTS

05 VILLAGE INSPIRATION

06 SITE DESIGN

07 THE EXPERIENCE

PARKING CALCULATIONS



PARAGON STAR VILLAGE SHARED PARKING MODEL								
Building	Use	Area/Unit	UDO	Market	Utilization		Market Demand	
					Daytime	Weekend/Evening	Daytime	Weekend/Evening
Building A	Multi-Family	390	665	519	100%	100%	519	519
Building A (1st Floor)	Retail	30,350	152	152	100%	100%	152	152
Building A (1st Floor)	Restaurant	5,000	70	67	70%	100%	47	67
		35,350					SUBTOTAL	198
								737
Building B (1st Floor)	Retail	17,650	88	88	100%	100%	88	88
Building B (1st Floor)	Restaurant	17,350	243	231	70%	100%	162	231
Building B (2nd Floor)	General Office	35,000	140	140	100%	10%	140	14
		70,000					390	333
Building C	Medical Office	60,000	300	275	100%	15%	275	41
Building D	Live Entertainment	800	264	264	0%	100%	0	264
Building E	Restaurant	14,500	203	193	70%	100%	135	193
Building F	Restaurant	1,800	25	24	70%	100%	17	24
Building G	Hotel	134	134	134	50%	100%	67	134
Building H	Hotel	98	98	98	50%	100%	49	98
Building I	Restaurant	1,350	19	18	70%	100%	13	18

- 
- 01 PROJECT SITE
- 02 BUILDING TYPES
- 03 PARKING
- 04 DEVELOPMENT PRECEDENTS**
- 05 VILLAGE INSPIRATION
- 06 SITE DESIGN
- 07 THE EXPERIENCE

AVALON ALPHARETTA, GA



LA CANTERA SAN ANTONIO, TX



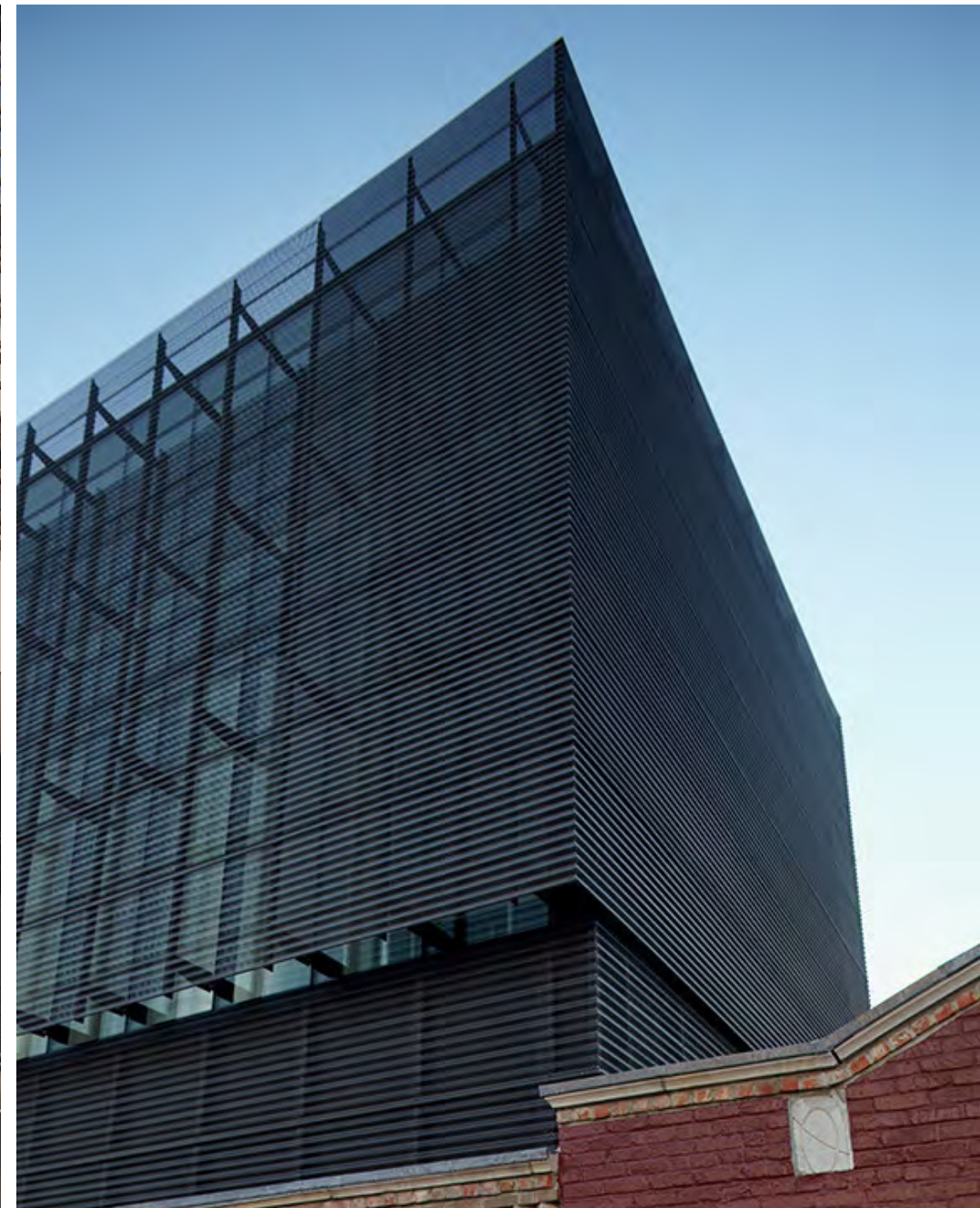
REVEL ATLANTA, GA



- 
- 01** PROJECT SITE
- 02** BUILDING TYPES
- 03** PARKING
- 04** DEVELOPMENT PRECEDENTS
- 05** VILLAGE INSPIRATION
- 06** SITE DESIGN
- 07** THE EXPERIENCE



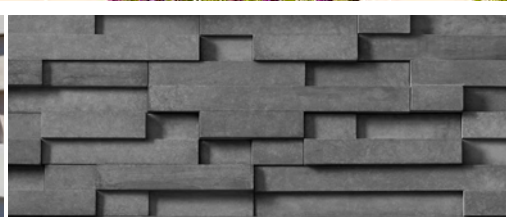




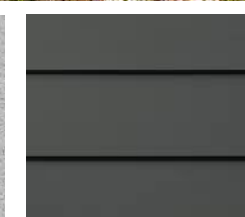




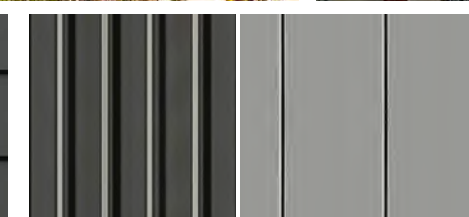
MANUFACTURED STONE /
BRICK MASONRY VENEER



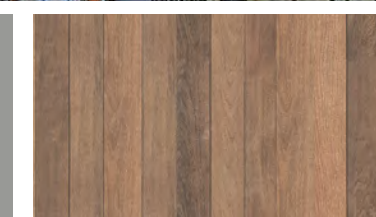
STUCCO/
EIFS



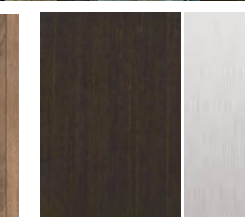
FIBER CEMENT
BOARD CLADDING



TEXTURED METAL PANELS / ACM



FAUX WOOD
CLADDING & SOFFITS



ALUM. STOREFRONT
GLAZING



FAUX - WOOD & PERF. METAL
SCREENING

- 
- 01 PROJECT SITE
02 BUILDING TYPES
03 PARKING
04 DEVELOPMENT PRECEDENTS
05 VILLAGE INSPIRATION
06 SITE DESIGN
07 THE EXPERIENCE



SITE DESIGN

Given the scale of the Paragon Star development, a site design strategy is critical to tying all of the unique uses and experiences together into a cohesive whole. The following pages describe the major components that work together to define the Paragon Star experience.

These components are:

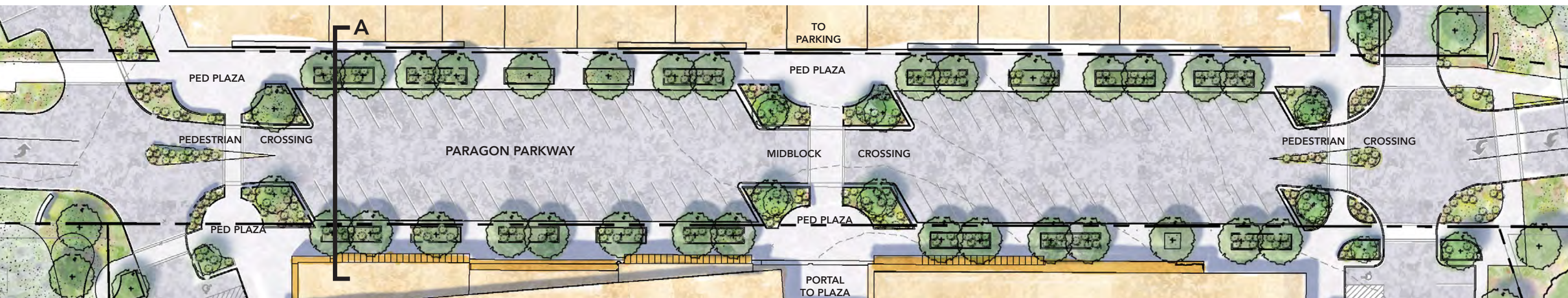
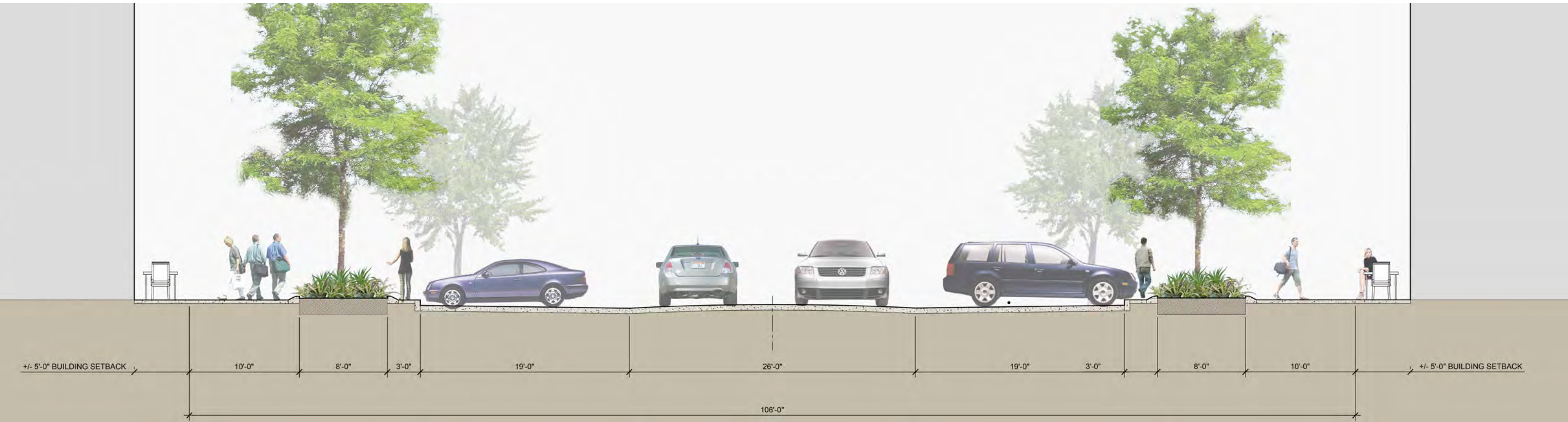
STREETSCAPE: Streets tie the project together, and provide vital pedestrian, bicycle and vehicular connections across the development. They set the tone for the development aesthetically and enhance the programs and uses they serve.

AMENITY SPACES: A variety of active open spaces work together with the streets to create a network of green spaces across the development. These open spaces range from highly programmed spaces such as Paragon Plaza, to more passive trails and park spaces.

CONNECTIVITY: Connectivity is about the streets and trails that tie the development together, but also about the design strategies for wayfinding, signage, and common elements that help create a cohesive experience. These elements also include planting palettes, site furniture, and lighting.

LANDSCAPE: Paragon Star is surrounded by and draws inspiration from the surrounding Missouri woodlands and the Little Blue River valley. Landscape strategies range from more formal plantings in high traffic areas of the village to more naturalistic plantings in parking lots and passive areas. The plant palettes utilize native and adaptive species.

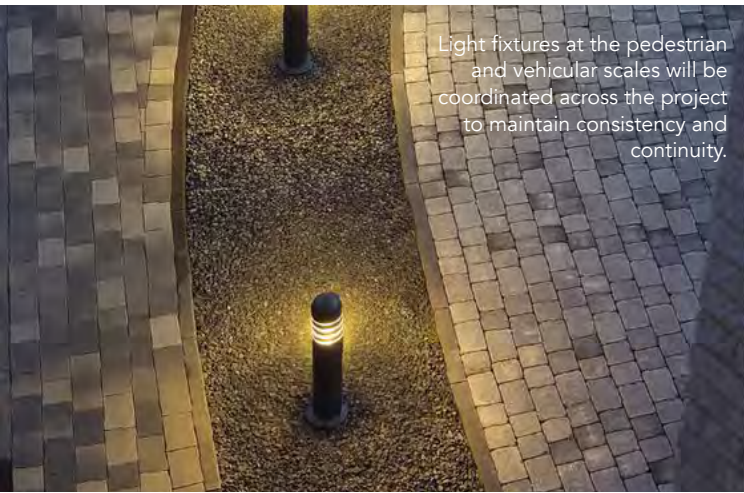
STREETSCAPE



AMENITY SPACE



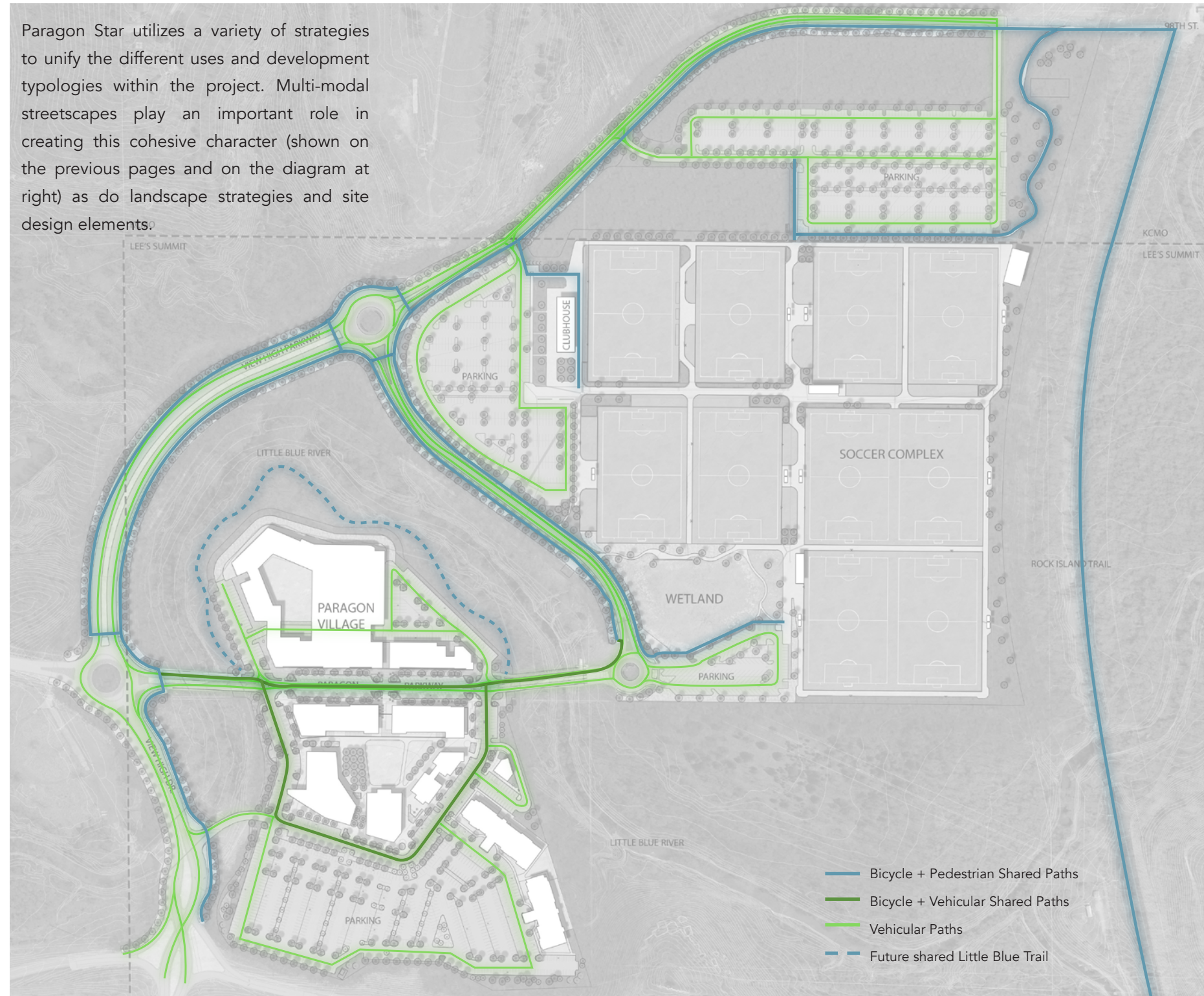
CONNECTIVITY



Light fixtures at the pedestrian and vehicular scales will be coordinated across the project to maintain consistency and continuity.



Paragon Star utilizes a variety of strategies to unify the different uses and development typologies within the project. Multi-modal streetscapes play an important role in creating this cohesive character (shown on the previous pages and on the diagram at right) as do landscape strategies and site design elements.



Site furnishing elements like bike racks will be coordinated across the project to maintain consistency and continuity.



Paragon Star will have a comprehensive signage and wayfinding strategy that encompasses the entire development.

LANDSCAPE

