



August 21, 2025

City of Lee's Summit
Attn: Mr. Mark Stinson, Fleet Manager
1200 SE Hamblin Road
Lee's Summit, MO 64081



Re: EnviroSight RX-SAT II HDL Combo CCTV System
Ford F-550 Diesel 4x4, Generator 16' box with Build Out

Sourcewell #: 120721-EVS
Member #8165



Mark,

Thank you for the opportunity to submit Sourcewell pricing for the new EnviroSight SAT II HDL Combo lateral launch camera system and Ford E-450 Cutaway Build Out. The RVX-SAT II HDL Combo system takes the Rovver X one step further with the ability to inspect laterals without changing equipment.

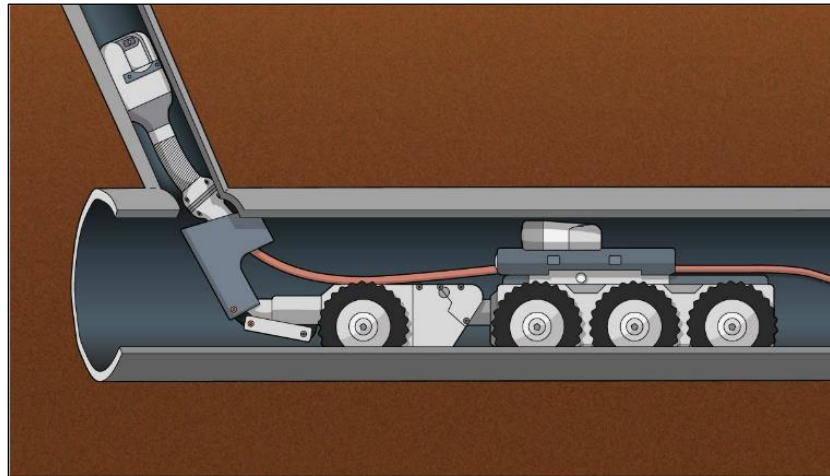
The new Rovver X SAT II HDL Combo lets you inspect laterals from a mainline, ideal for finding dangerous gas line cross-bores and illicit flows, or performing pre-acceptance inspection. Lateral inspection is all about pushing past obstacles and maximizing productivity. The system integrates with the Rovver X system components, reducing cost and equipment clutter.

When not inspecting laterals and in need of even more mobility, the Rovver X reel and camera can be removed from the truck easily to access remote areas with full reporting capabilities.

Features of the **Rovver X SAT II HDL Combo** include:

- **Octraction** – A steerable 8x8 drivetrain that you won't find on any other sewer crawler. This gives the ability to maneuver past offsets, obstacles and sludge, achieving a 984' crawl range
- **Fed, Not Shredded** – NEW, patent-pending belt drive maximizes your uptime by gently yet powerfully feeding the push rod as far as 147' up laterals. It won't shred your push rod with abrasive wheels. The mechanism is designed for easy cleaning and toolless belt changes in the field
- **20/20 Hindsight** – Positioned above flow, a color back-up camera with LED illumination helps you manage cable during reverse travel
- **Pivotal Flexibility** – A hinged mid-section lets you deploy through vertical accesses as narrow as 12.5" diameter, and locks rigid when not needed

- **Wheels, Reinvented** – With quick-change wheels, you can easily reconfigure for different pipe materials and sizes; no tools required
- **Bullseye** – A 5 megapixel targeting camera with 130-degree lens lets you digitally pan, tilt and zoom for precise, confident launching
- **All Within Reach** – Use the standard launch tube in small sewer mains, and switch to the adjustable one when larger mains demand PVC launch tubes of varying length
- **Pan/Tilt** – Use the pan/tilt camera to get a closer look at defects and navigate through bends with its detachable carbon fiber steering probe at speeds up to 23 fpm. An axial camera is also available for lateral diameters as small as 2" diameter



One (1) Envirosight RX/RXSAT II HDL Combo System: Includes DCX5000 with CCUI, large frame and cable for CCUI to Mainline Reel, RXSAT140 II QCD Crawler with 8 small rubber wheels installed, standard accessories and transport case, RAXSAT 300 Cable Reel with 300M Orange Cable and 45M of red push cable, RAX300 Cable Reel with 300M Cable installed, PTP50 Camera, AC40 Camera, RCX90 Camera, RX130 Crawler with integrated lift, 6 small rubber wheels installed. 8 medium rubber wheels, 4 large rubber wheels, and 2 climber wheels. Double Cable Roller for SAT, Guide pipe adapter DN75 with set of 4 guides

Detailed Features of "Build Out" in Ford F-550 Cutaway Van:

Solid bulkhead wall with smoked window • Formica desk with wall outlets above and below • overhead LED lighting • pass-through door with kick plate • 21.5" Tru-Vu desk-mount monitor • operator chair • carpeted walls and ceiling • black treaded rubber floor • safety light switches in truck cab • wall file • video distribution booster built-in 2-drawer file cabinet with butcher-block top • butcher block work surfaces • built-in heavy-duty storage/tool chest • slide-out crawler tray under cable reel • wash-down system (on-demand pump, lighted switch, 18-gallon water tank with exterior fill, 25' retractable hose reel) • ceiling-mounted LED lights • rear-facing 19" Tru-Vu monitor • gray FRP over plywood on walls and ceiling • black treaded rubber floor • aluminum storage shelf and caddy • wheel drawer • rubber glove dispenser • shore power cord • breaker box • auto-transfer switch • 12V fuse block • gas generator • tool package (manhole hook, pick, sledge hammer and shovel, all mounted on aluminum brackets against diamond plated backing • corner-mounted LED spotlights • front roof-mounted LED strobe • rear LED arrow board • back-up alarm • additional 21.5" Tru-Vu video monitor for SAT Lateral Launch

2" Tyger Tail

Upper Manhole Roller (Aluminum)

Wash-down sink added

E-RX-SYS-Basic-21-HDL Rover X HDL System includes VC500 Controller with Vision Report Software installed, RAX300 Automatic Cable Reel with 300M (1000ft) cable, wireless remote controller, reel mounting frame, emergency stop cable, RX130L with integrated lift crawler with 3 sets of Quick Change Style rubber wheels for 6" to 12" pipe diameter. RCX90 pan, tilt, zoom camera, Pressurization Kit, and WinCan VX entry license.

E-RX-400HD Large Diameter 400 Crawler with large wheels, Integrated lift HD

2025 Ford F-550 Cutaway, Diesel 4x4

Chassis specifications attached

Sourcewell Total for One (1) Envirosight Ford Cutaway box Van Build Out: **\$ 495,077.87**

Freight/training included

Pricing is valid for 30 days

Due to the potential impact of tariffs on material costs, import fees, and overall pricing, the parties acknowledge that any changes in tariff regulations that significantly affect the cost of goods or services under this agreement may require renegotiation of pricing or, if necessary, cancellation of the order. If such a situation arises, Key Equipment & Supply reserves the right to modify or terminate the order upon written notice to the buyer, with any deposits or payments subject to a mutually agreed resolution.

Thank you for your continued trust in our products, service, and staff. If you have any questions, or would like additional information, please don't hesitate to contact me at 913-915-8709 or swilliams@keyequipment.com. It is a pleasure assisting you with your equipment needs

Respectfully,

Steve Williams

Steve Williams
Territory Manager
Key Equipment & Supply Co.



*Sample Photo

St. Louis

Key Equipment & Quality Rents
13507 Northwest Industrial Drive
Bridgeton, MO 63044
800-325-4323

Kansas City

Key Equipment & Quality Rents
6716 Berger Avenue
Kansas City, KS 66111
800-262-0149