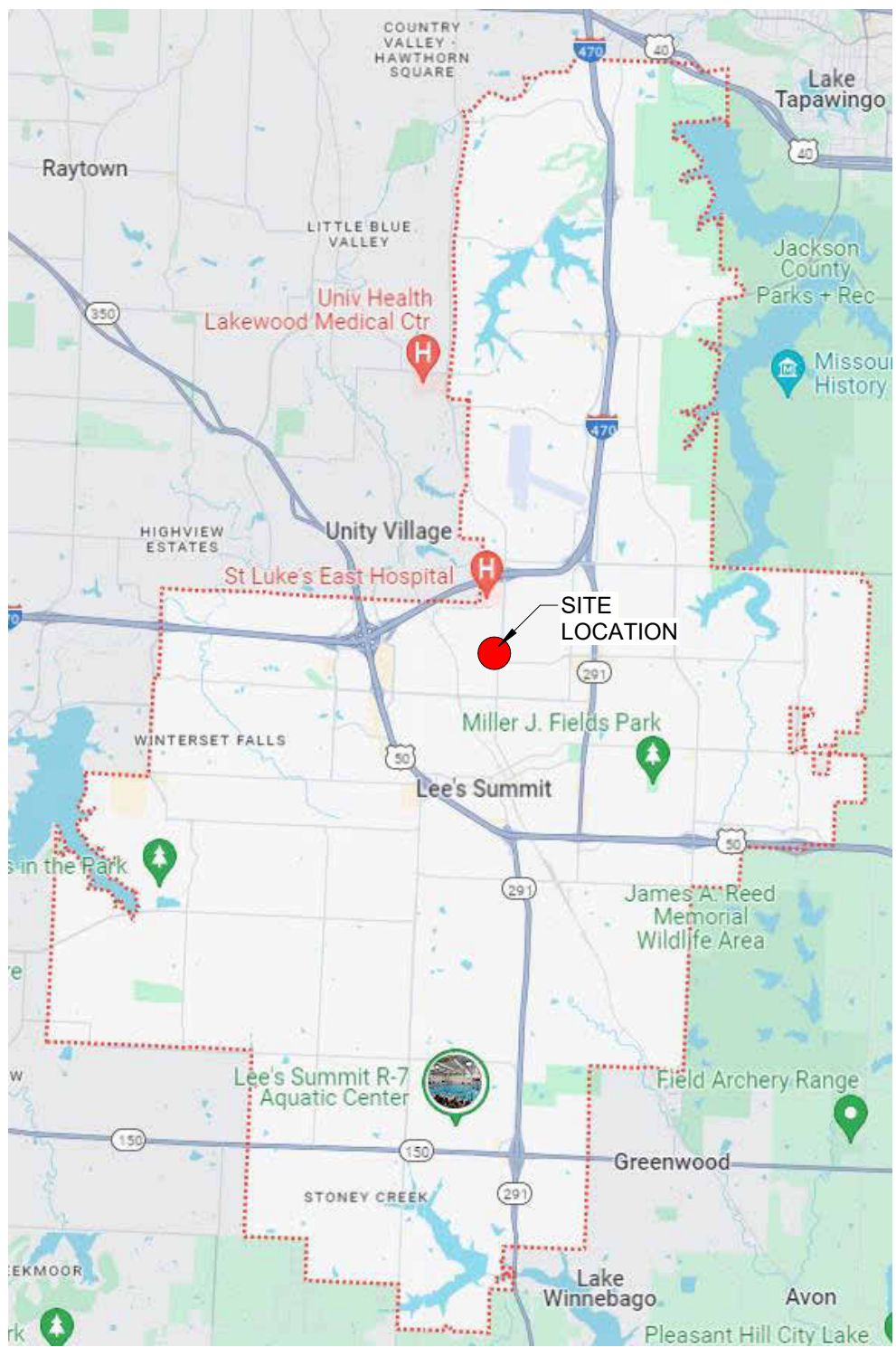
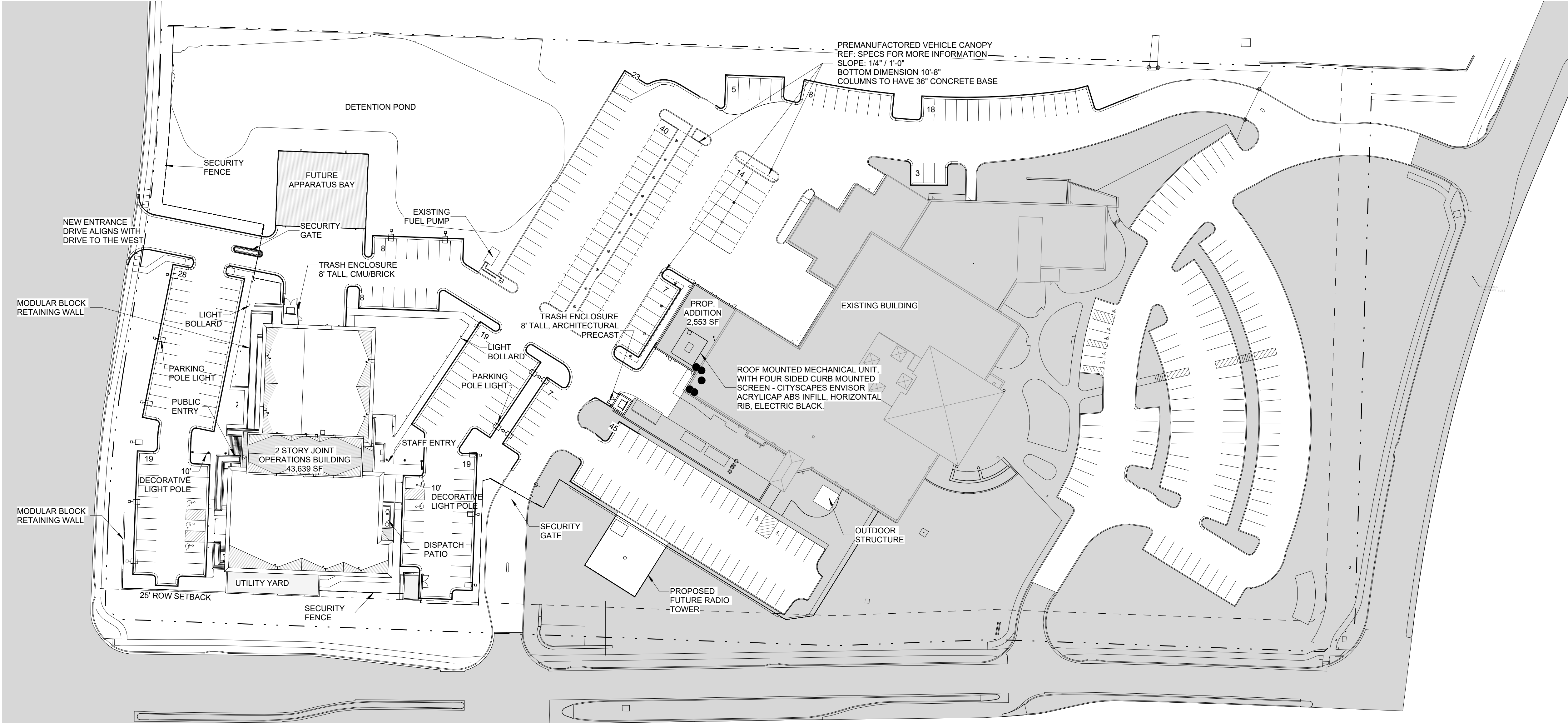


H  
G  
F  
E  
D  
C  
B  
A

10 9 8 7 6 5 4 3 2 1



VICINITY MAP

NOTE: ALL EXTERIOR LIGHTING SHALL COMPLY WITH THE STANDARDS UNDER ARTICLE 8 OF THE CITY'S UNIFIED DEVELOPMENT ORDINANCE (UDO) SECTIONS 8.220, 8.230, 8.250, 8.260, AND 8.270

**HOEFER WELKER**  
4622 PENNSYLVANIA AVENUE  
SUITE 1400  
KANSAS CITY, MO 64112  
P: 913.307.3700  
www.hoeferwelker.com  
COPYRIGHT © BY HOEFER WELKER, LLC

**LEE'S SUMMIT JOINT OPERATIONS FACILITY**  
**2 NE TUDOR RD**  
**LEE'S SUMMIT, MISSOURI 64086**  
**FINAL DEVELOPMENT PLAN**

REVISION DATES:


**INTERIM REVIEW ONLY**  
(Document Incomplete)  
Not to be used for regulatory approval, permit, or construction.  
Architect Of Record:  
Hoefer Welker

PROFESSIONAL SEAL

**AS 101**  
ISSUE DATE: OCTOBER 16, 2024  
HOEFER WELKER #: 138191

ARCHITECTURAL SITE PLAN



**A1** ARCHITECTURAL SITE PLAN  
1" = 50'-0"