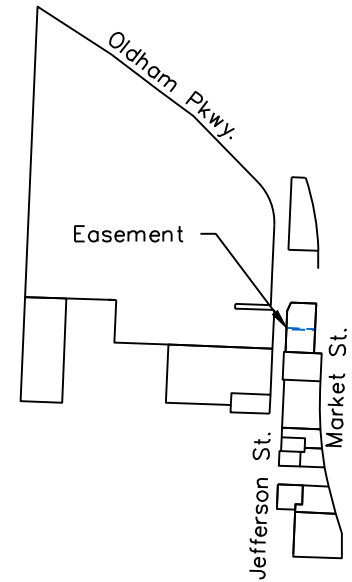
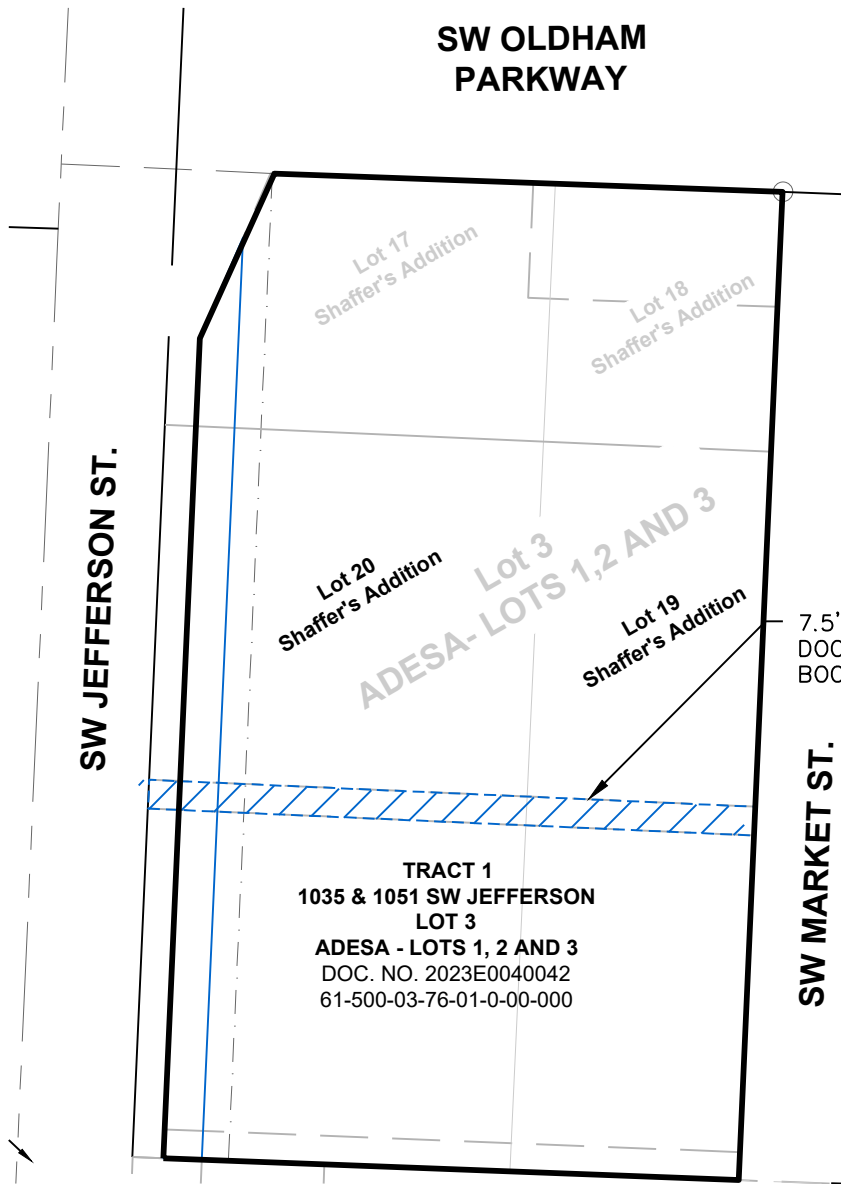


**SW OLDHAM
PARKWAY**



7.5' WATER LINE EASEMENT
DOC. 1-84870
BOOK. 255, PAGE 676

TRACT 1
1035 & 1051 SW JEFFERSON
LOT 3
ADESA - LOTS 1, 2 AND 3
DOC. NO. 2023E0040042
61-500-03-76-01-0-00-000

Lot 3 Adessa lots 1, 2 &3
Vacation of Drainage and Sewer Easement

A Drainage and Sewer easement located in the Southwest Quarter of Section 8, Township 47, Range 31, In Lees Summit, Jackson County, Missouri. More particularly described as follows:

The South 7.5 feet of Lots 19 & 20 of "Shaffer's Addition", a Subdivision of land in said Lee's Summit. Easement Recorded by Document 197110084870 in Book 255 on Page 676.



Prepared By:
Matthew J. Schlicht
PLS-2012000102

Exhibit 18
1035 & 1051
SW Jefferson St.

SHEET 1 OF 1

DATE: 03/27/2025
PROJECT NUMBER: Oldham Village
REV. TO DWG.:
SCALE: N/A
1"=50'

Drainage and Sewer Easement Vacation
Lots 19 and 20, Shaffer's Addition

ENGINEERING SOLUTIONS
ENGINEERING & SURVEYING

50 SE 30TH STREET
LEE'S SUMMIT, MO 64082
P:(816) 623-9888 F:(816)623-9849