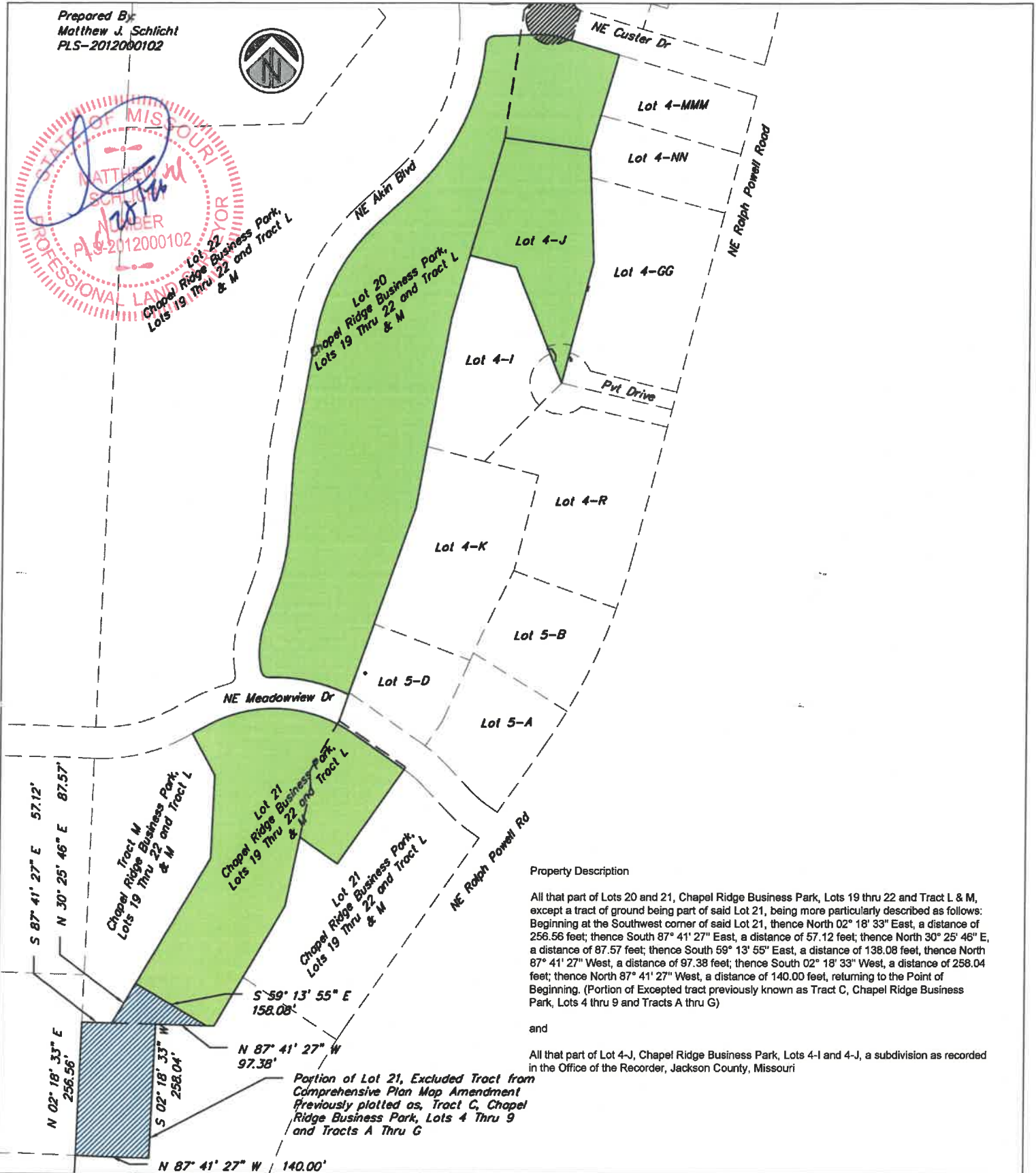
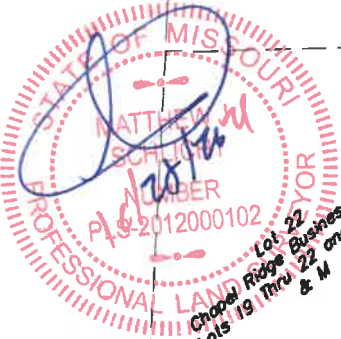


Prepared By:
Matthew J. Schlicht
PLS-2012000102



Easement Exhibit

Comprehensive Plan Amendment

SHEET 1 OF 1

DATE: 10/28/2021

PROJECT NUMBER: 721 Akin Blvd

REV. TO DWG.:

SCALE: 1"=250'

Comprehensive Plan Amendment Exhibit

Chapel Ridge Business Park

Lots 19 thru 22 and Tract L & M

Lee's Summit, Jackson County, Missouri

ENGINEERING SOLUTIONS

ENGINEERING & SURVEYING

50 SE 30TH STREET
LEE'S SUMMIT, MO 64082
P:(816) 623-9888 F:(816) 623-9849