

PARKING DATA:
 SINGLE FAMILY 78 SPACES
 GARAGE PARKING 78 SPACES
 DRIVEWAY PARKING 91 SPACES
 STREET PARKING
 55+ GARAGE PARKING 199 SPACES
 DRIVEWAY PARKING 199 SPACES
 OPEN PARKING SPACES 60 SPACES
 STREET PARKING 48 SPACES

ZONED: CP-2
 OWNER: FORT HAYS STATE
 UNIVERSITY FOUNDATION

ZONED: AG
 OWNER: FORT HAYS STATE
 UNIVERSITY FOUNDATION

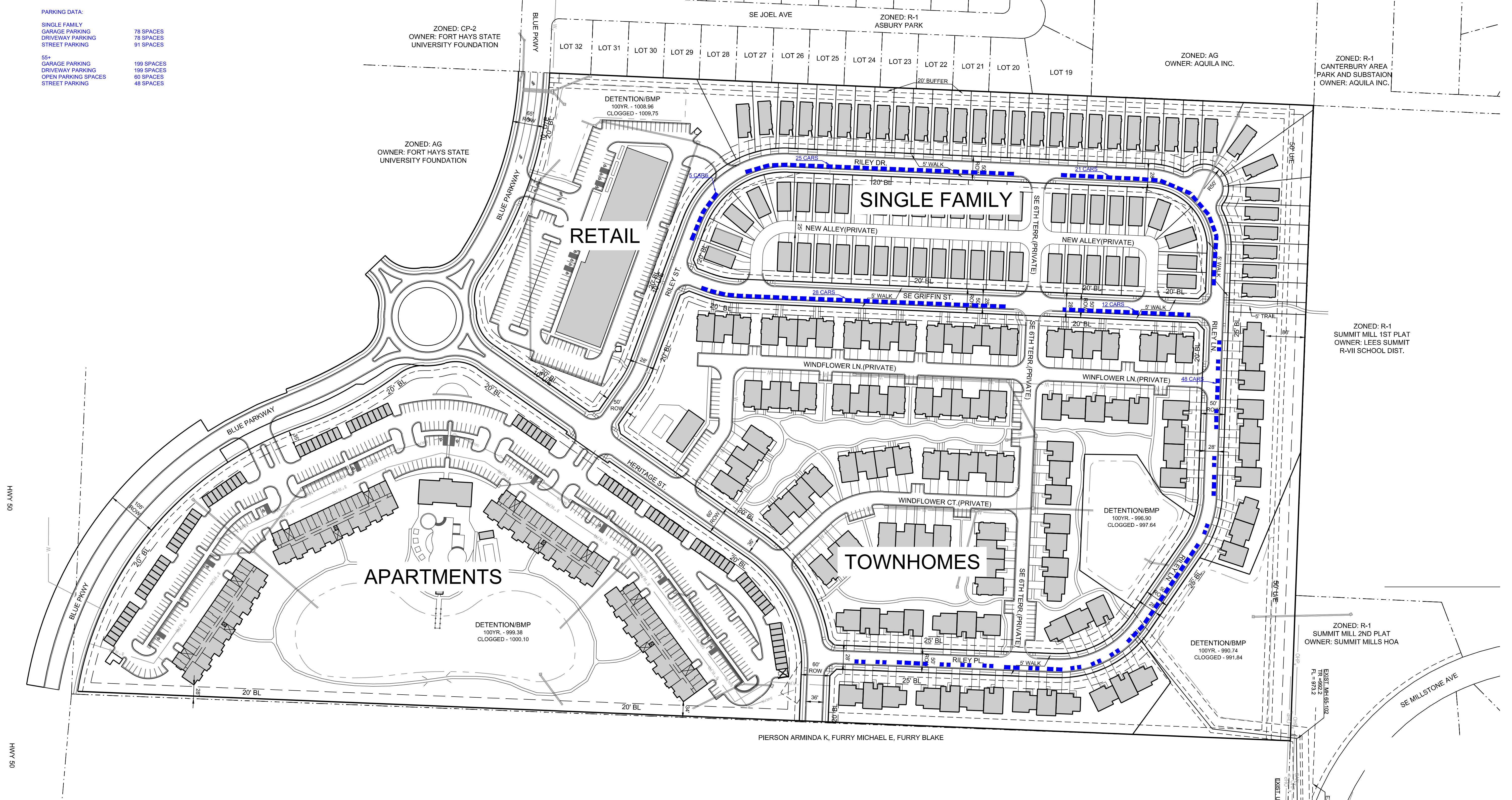
ZONED: R-1
 ASBURY PARK

ZONED: AG
 OWNER: AQUILA INC.

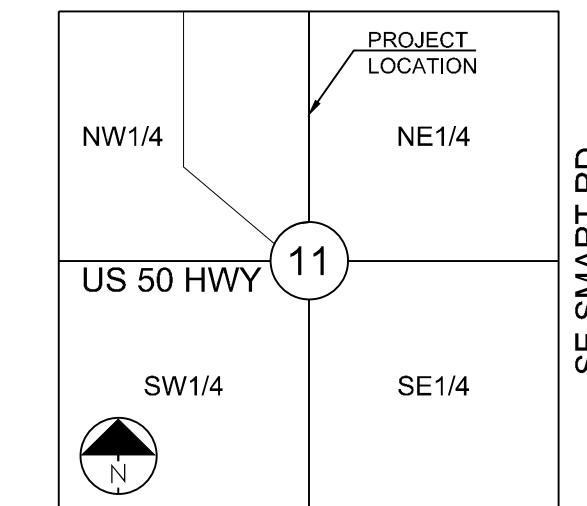
ZONED: R-1
 CANTERBURY AREA
 PARK AND SUBSTATION
 OWNER: AQUILA INC.

ZONED: R-1
 SUMMIT MILL 1ST PLAT
 OWNER: LEES SUMMIT
 R-VII SCHOOL DIST.

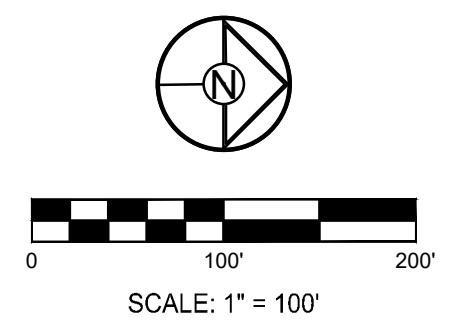
ZONED: R-1
 SUMMIT MILL 2ND PLAT
 OWNER: SUMMIT MILLS HOA



PIERSON ARMINDA K, FURRY MICHAEL E, FURRY BLAKE



SECTION 11-47N-31W
 LOCATION MAP
 SCALE 1" = 2000'



**A NEW GRIFFIN RILEY DEVELOPMENT
 PRELIMINARY DEVELOPMENT PLAN
 BLUE PARKWAY AND BLACKWELL ROAD
 LEE'S SUMMIT, MISSOURI**

REVISION DATE	DESCRIPTION
2021.08.24	CITY COMMENTS

SINGLE FAMILY &
 55+ PARKING
 EXHIBIT

SHEET
C1.0
 #