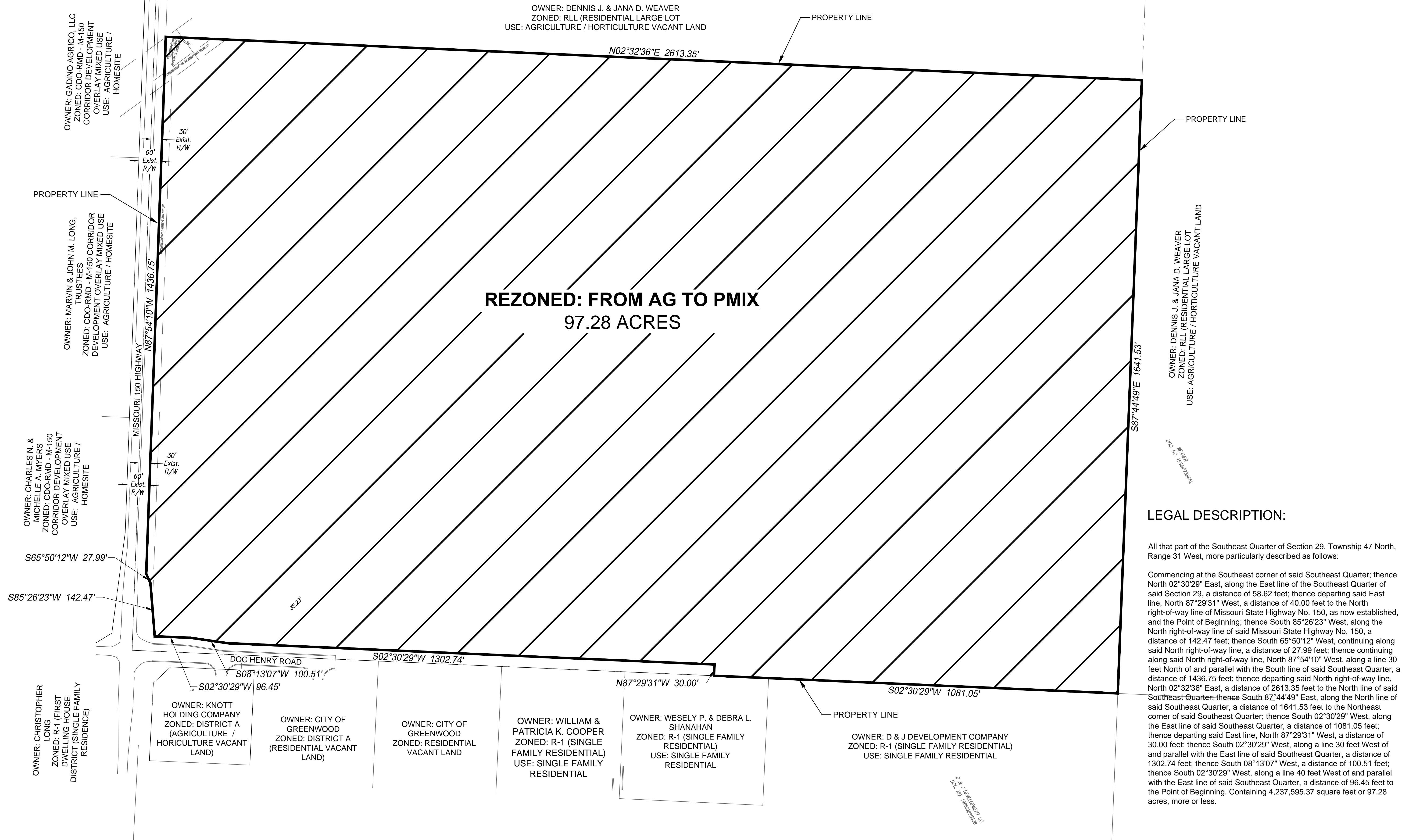


# REZONING MAP COBEY CREEK

500 SE M 150 HIGHWAY  
SE ¼, SECTION 29, TOWNSHIP 47 NORTH, RANGE 31 WEST  
LEE'S SUMMIT, JACKSON COUNTY, MISSOURI

OWNER: DENNIS J. & JANA D. WEAVER  
ZONED: RLL (RESIDENTIAL LARGE LOT)  
USE: AGRICULTURE / HORTICULTURE VACANT LAND

**REZONED: FROM AG TO PMIX**  
**97.28 ACRES**



**LEGAL DESCRIPTION:**

All that part of the Southeast Quarter of Section 29, Township 47 North, Range 31 West, more particularly described as follows:

Commencing at the Southeast corner of said Southeast Quarter; thence North 02°30'29" East, along the East line of the Southeast Quarter of said Section 29, a distance of 58.62 feet; thence departing said East line, North 87°29'31" West, a distance of 40.00 feet to the North right-of-way line of Missouri State Highway No. 150, as now established, and the Point of Beginning; thence South 85°26'23" West, along the North right-of-way line of said Missouri State Highway No. 150, a distance of 142.47 feet; thence South 65°50'12" West, continuing along said North right-of-way line, a distance of 27.99 feet; thence continuing along said North right-of-way line, North 87°54'10" West, along a line 30 feet North of and parallel with the South line of said Southeast Quarter, a distance of 1436.75 feet; thence departing said North right-of-way line, North 02°32'36" East, a distance of 2613.35 feet to the North line of said Southeast Quarter; thence South 87°44'49" East, along the North line of said Southeast Quarter, a distance of 1641.53 feet to the Northeast corner of said Southeast Quarter; thence South 02°30'29" West, along the East line of said Southeast Quarter, a distance of 1081.05 feet; thence departing said East line, North 87°29'31" West, a distance of 30.00 feet; thence South 02°30'29" West, along a line 30 feet West of and parallel with the East line of said Southeast Quarter, a distance of 1302.74 feet; thence South 08°13'07" West, a distance of 100.51 feet; thence South 02°30'29" West, along a line 40 feet West of and parallel with the East line of said Southeast Quarter, a distance of 96.45 feet to the Point of Beginning. Containing 4,237,595.37 square feet or 97.28 acres, more or less.

DATE	REVISION	NO.	BY	CORP.

R. KEVIN STERRETT, KS E-21889  
MO E-26440  
Jul 11, 2017

**gconsult inc**  
engineers planners  
11010 Haskell Street, Suite 210, Kansas City, Kansas 66109  
CORPORATE LICENSE NO. E201000573 (MO.) / E-1736 (KS.)

REZONING MAP  
COBEY CREEK  
CITY OF LEE'S SUMMIT, JACKSON COUNTY, MISSOURI

X-REF NO.  
**16-059 BASE**  
DRAWING NO.  
**16-059 PDPa**  
DATE  
March 30, 2018  
JOB NO.  
**16-059**

1 SHEET OF 1

