

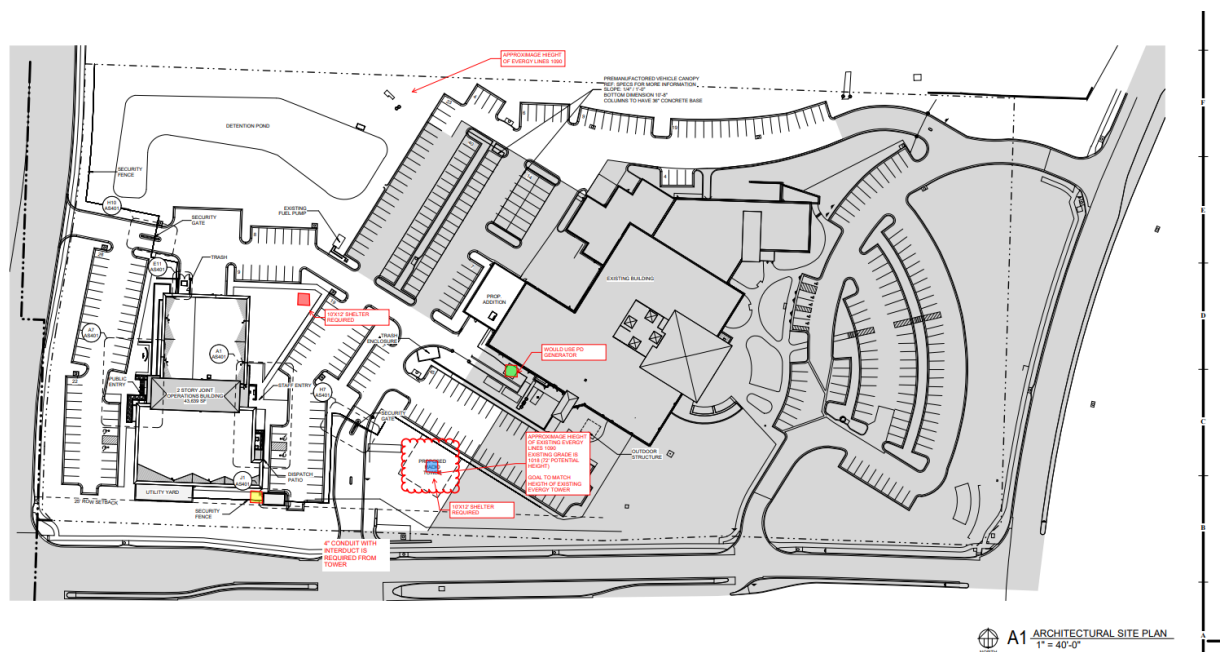
1. SETBACK

Two alternate locations that met the setback requirements were considered for the location.

The secondary location (red square) located next to the JOF building is not ideal due to its proximity to the JOF building. Moving the RF site further away from the building would help mitigate the risk of power surges and potential lighting damage. This location is not easily accessible for service and maintenance by personnel.

The Tertiary location (green square) was deemed unsuitable as it was not tall enough or structurally capable of supporting the required equipment needed for this design. Placing a shelter at this location would necessitate sacrificing existing parking spaces, which are already limited.

Along the north side of the property, exists a 100' Evergy utility easement that prevents that area from being considered.



3. LANDSCAPING – see attachment L-101_LANDSCAPE PLAN.pdf





5. TOWER DESIGN

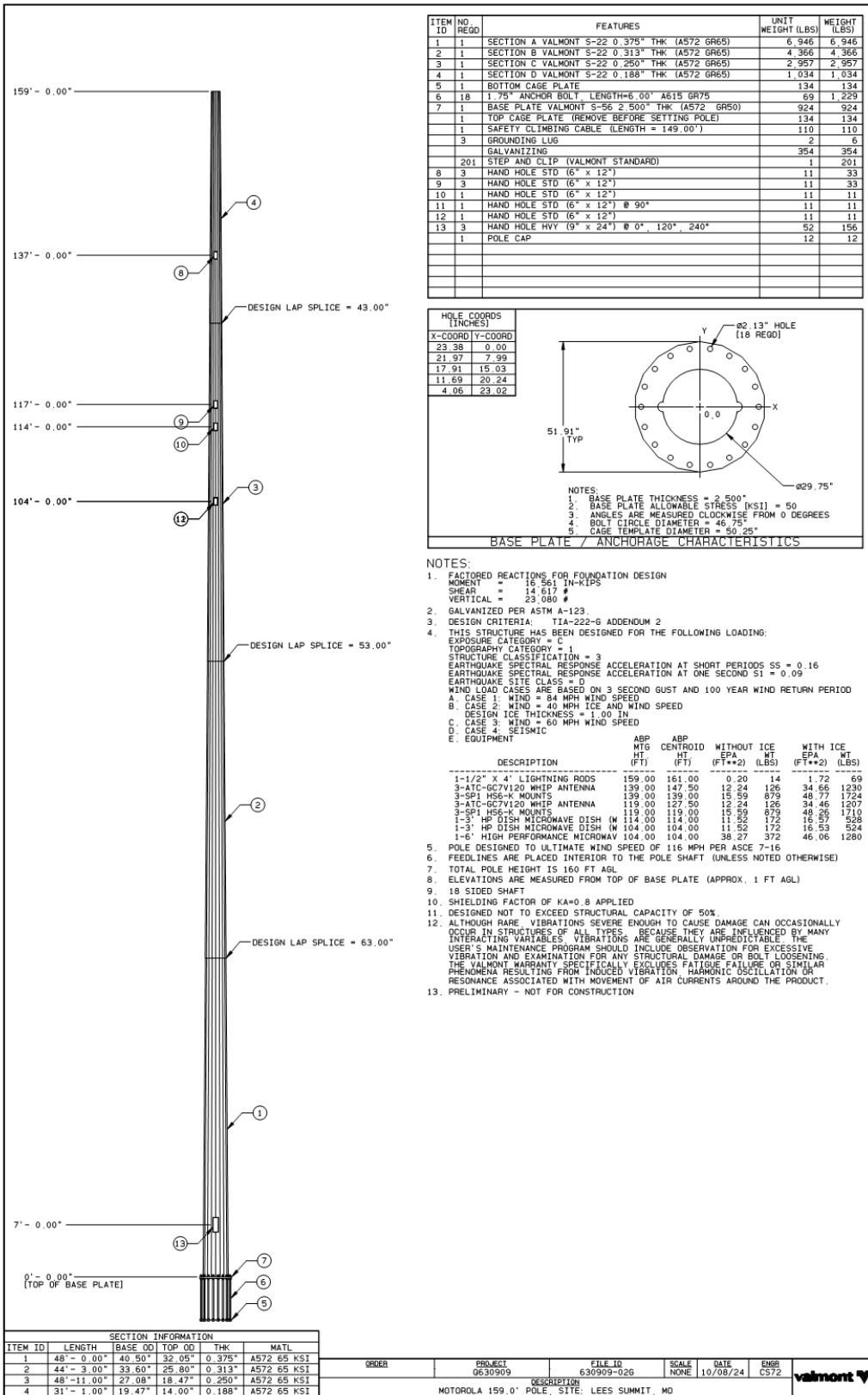
Attached is the preliminary design. The color of tower is standard grey galvanized

GALVANIZED



Galvanize

GV



6. SITE PLAN – See attachment AS101-ARCHITECTURAL SITE PLAN.pdf

