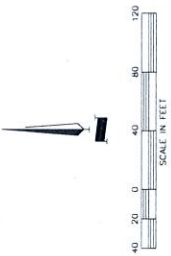


FINAL PLAT OF
RAINTREE POINTE
 LOTS 1 THRU 7 AND TRACTS A THRU D
 BEING IN THE NE 1/4 OF SECTION 6, T46N, R31W
 LEE'S SUMMIT, CASS COUNTY, MISSOURI

RECEIVED

JUN 21 2016

Planning & Codes Admin



LEGEND
 BL BUILDING LINE
 N/A NON-HAZARDOUS
 U/L UTILITY PLACEMENT
 U/S UTILITY SERVICE
 L/C LANDSCAPE ELEMENT
 S/C STATE PLANE COORDINATE

SQUARE FOOTAGE OF ALL TRACTS

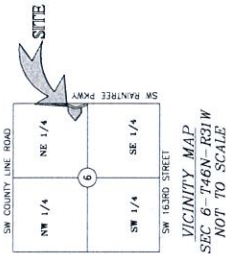
TRACT "A"	2,232.50 S.F.
TRACT "B"	1,357.50 S.F.
TRACT "C"	2,208.50 S.F.
TRACT "D"	2,208.50 S.F.

SURVEYOR'S NOTES:

- 1) A PART OF THIS PROPERTY LIES WITHIN THE FLOOD ZONE BOUNDARY AS OF THE 50-YEAR FLOOD ZONE MAP FOR INSURANCE RATE MAP COMMUNITY PANEL NUMBER 200000000, DATED 04/20/10 FOR CITY OF LEE'S SUMMIT, MISSOURI.
- 2) THE FOLLOWING STAMPS AND MONUMENTS CAN BE SET UPON COMPLETION OF THE CONSTRUCTION ACTIVITIES WITH THIS PLAT ON WITHIN 12 MONTHS FOLLOWING THE RECORDING OF THIS PLAT, WHICH EVER IS EARLIER, SEMIPERMANENT MONUMENTS 1/2" IRON BAR WITH PLASTIC CAP STAMPED "HON INC." SET AT ALL LOT CORNERS, CORNER MONUMENTS AT THE PROLONGATION OF TIES TO NEIGHBORLY LINES.
- 3) THE BEARINGS AND COORDINATES SHOWN ON THIS PLAT ARE BASED UPON THE MISSOURI STATE PLANE MONUMENTS COORDINATE SYSTEM, CASS COUNTY, MISSOURI, BEING COMPARED TO FEDERAL NAD 83 UTM MONUMENTS COORDINATE AND CAZ011897 ADJUSTMENT.
- 4) THE PROPERTY SHOWN HEREON IS CLASSIFIED AS URBAN PROPERTY BY IUCR 88.2.030 AND 4.03.00.16.030.
- 5) LOT 1 AND LOT 7 WILL NOT HAVE CONNECTING EGRESS AND EGRESS ACCESS TO SOUTHWEST MAIN STREET PARKWAY.
- 6) AN ELEVATION CERTIFICATE IS REQUIRED FOR LOT 3.

STATE PLANE COORDINATES (METERS)

NO.	NORTHING	EASTING	NO.	NORTHING	EASTING
1	250527.500	860570.753	5	250527.500	860570.753
2	250527.500	860570.753	6	250527.500	860570.753
3	250527.500	860570.753	7	250527.500	860570.753
4	250527.500	860570.753	8	250527.500	860570.753



CITY OF LEE'S SUMMIT:
 MAYOR AND CITY COUNCIL CERTIFICATION:
 THIS IS TO CERTIFY THAT THE ACCOMPANYING PLAT OF
 "RAINTREE POINTE, LOTS 1 THRU 7 AND TRACTS A THRU D"
 WAS SUBMITTED TO AND DULY APPROVED BY THE MAYOR AND CITY COUNCIL OF THE CITY OF LEE'S SUMMIT, MISSOURI, THIS _____ DAY OF _____, 2016 BY (SIGNATURE)

APPROVED: PUBLIC WORKS / ENGINEERING
 RANDALL HEDGUS _____ DATE _____ DENISER CHEUNG, M.M.C. _____ DATE _____
 MAYOR _____ CITY ENGINEER _____

APPROVED: PLANNING & CODES ADMINISTRATION
 ROBERT G. MUKAVY, M.P.E. _____ DATE _____ CASS COUNTY: _____
 DIRECTOR _____ CITY ENGINEER _____

APPROVED: PLANNING COMMISSION
 RECORDER OF DEEDS:
 _____ DATE _____

SURVEYOR'S DECLARATION:
 I HEREBY DECLARE THAT I HAVE PERFORMED A SURVEY AND PREPARED THE ACCOMPANYING PLAT OF "RAINTREE POINTE, LOTS 1 THRU 7 AND TRACTS A THRU D" AS JOINTLY ADOPTED BY THE MISSOURI BOARD OF SURVEYORS AND ENGINEERS AND THE MISSOURI DEPARTMENT OF NATURAL RESOURCES, DIVISION OF GEOLOGICAL SURVEY AND RESOURCES ASSESSMENT AND THAT THE RESULTS OF SAID SURVEY ARE REPRESENTED ON THIS PLAT TO THE BEST OF MY PROFESSIONAL KNOWLEDGE AND BELIEF.

JOHNNY WALKER, PLS 20010010197 _____ DATE _____

HDR ENGINEERING, INC.
 7143 WASHINGTON ST
 LANOOK DEVELOPMENT, LLC
 LOTS 1 THRU 7 AND TRACTS A THRU D
 RAIN TREE POINTE
 CASS COUNTY, MISSOURI 64114
 ND STATE CO #002856

275183
 2 of 2

-2016-102-