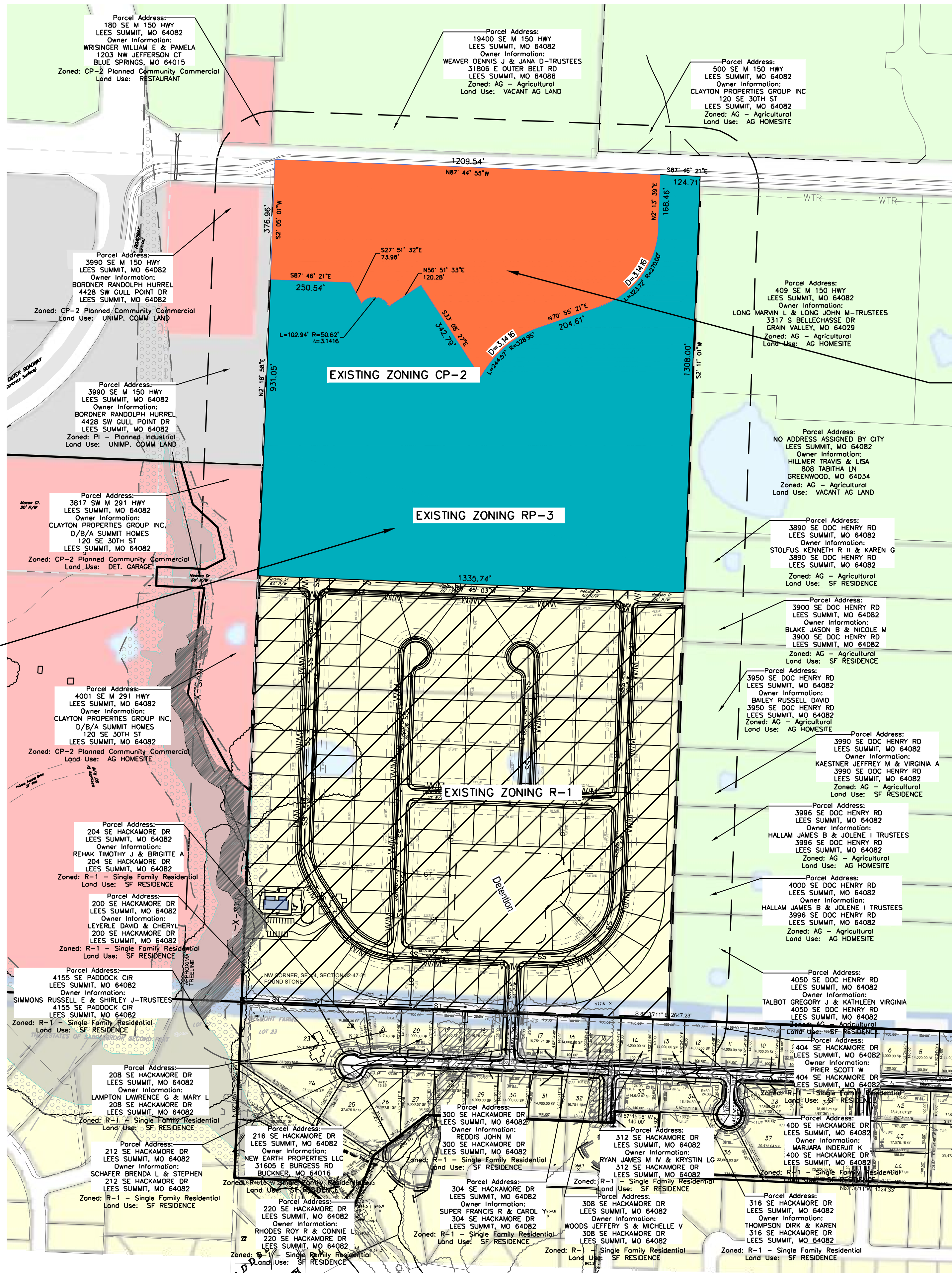


REZONING EXHIBIT

OVATION

Section 32, Township 47 North, Range 31 West
Lee's Summit, Jackson County, Missouri

REVISIONS
DATE



AREA TO BE REZONED TO PMIX
534,444.52 SF
12.27 ACRES

EXISTING ZONING RP-3, CP-2

AREA TO BE REZONED TO RP-4
1,211,127.82 SF
27.80 ACRES

BOUNDARY DESCRIPTION

THE NORTH 1308.7 FEET OF THE WEST HALF OF THE NORTHEAST QUARTER OF SECTION 32, TOWNSHIP 47, RANGE 31, IN LEE'S SUMMIT, JACKSON COUNTY, MISSOURI, SUBJECT TO THAT PART IN M 150 HIGHWAY.

Rezoning to PMIX

Beginning at the Northwest corner of the north 1308.7 feet of the West 1/2 of the Northeast Quarter of Section 32, Township 47, Range 31, in Lee's Summit, Jackson County, Missouri; thence South along the west line of said Northeast Quarter, South 2° 05' 01" W, a distance of 376.96 feet; thence South 87° 46' 21" E, a distance of 250.54 feet; South 27° 51' 32" East, a distance of 73.96 feet; thence along a curve to the right, having a radius of 102.94 feet, a distance of 102.94 feet; thence North 56° 51' 33" East, a distance of 120.28 feet; thence South 33° 08' 27" East, a distance of 342.79 feet; thence along a curve to the right, having a radius of 330.00 feet, an arc distance of 244.57 feet; thence North 70° 55' 21" East, a distance of 204.61 feet; thence along a curve to the left, having a radius of 270.00 feet, an arc distance of 323.72 feet; thence North 2° 13' 39" East, a distance of 168.46 feet, to a point on the north line of said Northeast Quarter; thence West along said north line, North 87° 44' 55" West, a distance of 1209.54 feet, returning to the point of beginning.

Rezoning to RP-4

All that part of THE NORTH 1308.7 FEET OF THE WEST HALF OF THE NORTHEAST QUARTER OF SECTION 32, TOWNSHIP 47, RANGE 31, IN LEE'S SUMMIT, JACKSON COUNTY, MISSOURI

EXCEPT

Beginning at the Northwest corner of the north 1308.7 feet of the West 1/2 of the Northeast Quarter of Section 32, Township 47, Range 31, in Lee's Summit, Jackson County, Missouri; thence South along the west line of said Northeast Quarter, South 2° 05' 01" W, a distance of 376.96 feet; thence South 87° 46' 21" E, a distance of 250.54 feet; South 27° 51' 32" East, a distance of 73.96 feet; thence along a curve to the right, having a radius of 102.94 feet, a distance of 102.94 feet; thence North 56° 51' 33" East, a distance of 120.28 feet; thence South 33° 08' 27" East, a distance of 342.79 feet; thence along a curve to the right, having a radius of 330.00 feet, an arc distance of 244.57 feet; thence North 70° 55' 21" East, a distance of 204.61 feet; thence along a curve to the left, having a radius of 270.00 feet, an arc distance of 323.72 feet; thence North 2° 13' 39" East, a distance of 168.46 feet, to a point on the north line of said Northeast Quarter; thence West along said north line, North 87° 44' 55" West, a distance of 1209.54 feet, returning to the point of beginning.

Part of Section 32
Township 47 North, Range 31 West
Lee's Summit, Jackson County, Missouri

REZONING EXHIBIT		COUNTY	Jackson	TOWNSHIP	47 N	RANGE	31 W	SECTION	32	DATE OF PREPARATION	February 22, 2024
		SHEET	1 OF 1	SCALE	1" = 200'	DRAWN BY	M. Schlicht, PLS., PE				

PROFESSIONAL SEAL

ENGINEERING & SURVEYING SOLUTIONS
50 SE 30TH STREET
LEE'S SUMMIT, MO 64082
P: (816) 625-9888 F: (816) 623-9849