

July 2, 2024

City of Lee's Summit, Missouri
Development Services
Attn: Daniel Fernandez
Project Manager
202 SE Green Street
Lee's Summit, Missouri 64063

Re: QuikTrip No. 0183 Storm Drainage Letter
1001 SW Blue Parkway

Mr. Fernandez,

The purpose of this Storm Drainage Letter is to confirm that the proposed improvements for the QuikTrip No. 0183 project will not exceed the allowable impervious surface area and will not require stormwater detention or treatment facilities.

It is our understanding, as this project is a redevelopment of an existing QuikTrip site, if the proposed improvements do not increase the total impervious surface area from the existing conditions, then stormwater detention and treatment facilities will not be required.

The existing QuikTrip site contains 73,616 sf of impervious surface area, while the proposed improvements will consist of 64,279 sf of impervious surface area. This is a reduction in impervious surface area of 9,337 sf in the proposed conditions. The stormwater runoff volume generated in the proposed conditions will be less than that of the existing conditions, thus no stormwater detention or treatment facilities will be required.

An Existing Conditions Impervious Surface Plan exhibit and *Proposed Conditions Impervious Surface Plan* exhibit has been provided with this letter as supporting documentation.

Additionally, it should be noted if the surplus area on the QuikTrip property is sold and/or developed at a later date, the developer will be required to provide detention for the future improvements if the future improvements increase total impervious surface area by greater than 9,337 sf.

In summary, the proposed conditions will reduce the impervious surface area from the existing conditions, which will also result in a reduction of stormwater runoff volume generated from the site. The proposed improvements are unlikely to have adverse impacts to the downstream system and thus will not require stormwater detention or treatment facilities. We request your approval of this QuikTrip No. 0183 Storm Drainage Letter to signify your concurrence of the provided information and conclusions.

If you have any additional questions or need additional information, please contact jonathon@mdg-kc.com or 469-525-1891.

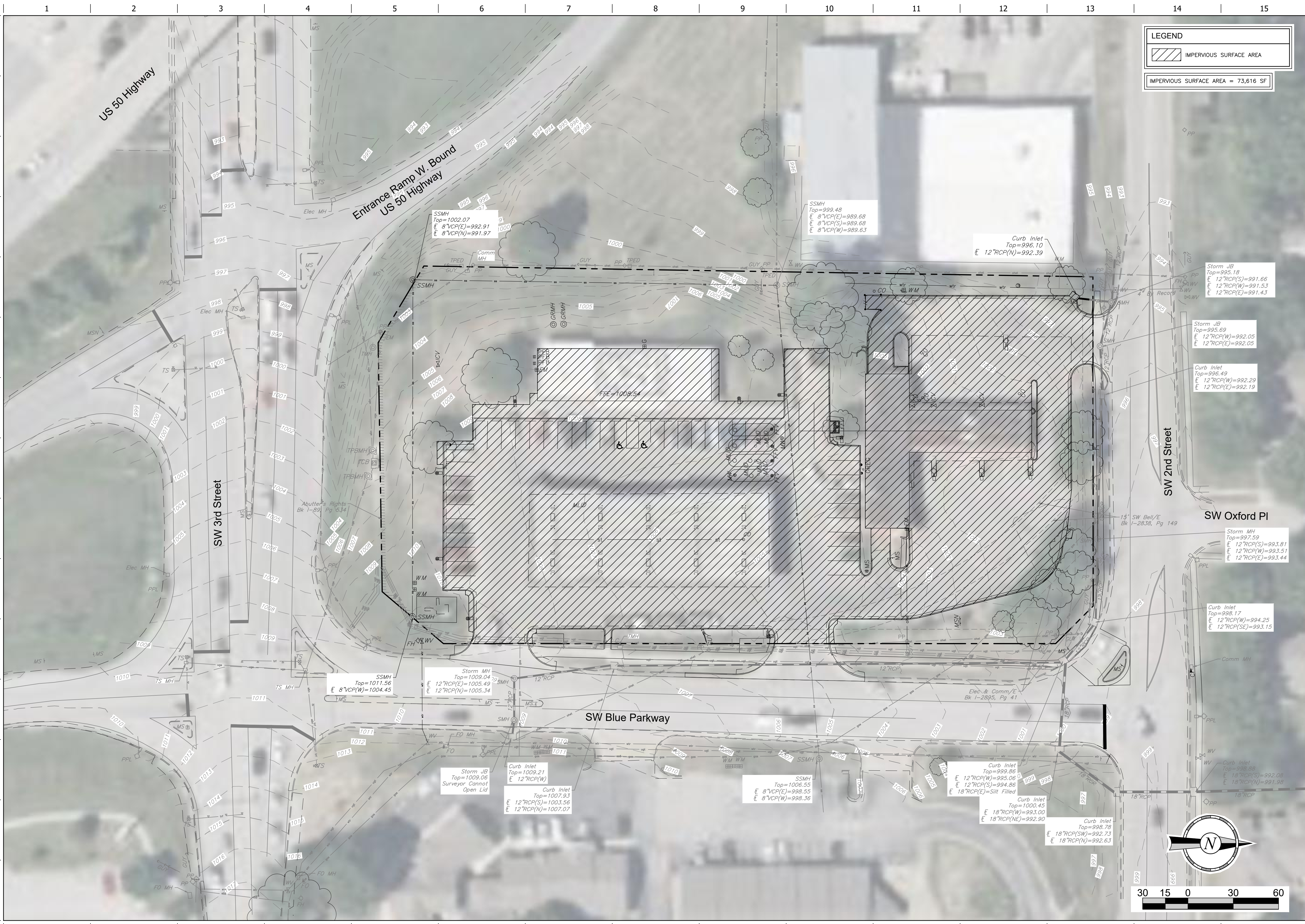
Sincerely,



Jonathon Smith, P.E.
Project Manager
Midwest Design Group



FILE LOCATION: \\DESIGN\DESIGN\HMC608\Chil 3D Projects\QT183 Lee's Summit, MO\02-0183 Impervious USERC\Comor SAVED:7/2/2024 12:56 PM PLOTTED:7/2/2024 1:18 PM



LEGEND

IMPERVIOUS SURFACE AREA

IMPERVIOUS SURFACE AREA = 73,616 SF

PROJECT NO.: 02-0183

MOG

Midwest Design Group
Kansas City

PO Box 860015
Shawnee, KS 66286-0015
P 913.248.9385

QuikTrip No. 0183

1001 SW BLUE PARKWAY
LEES SUMMIT, JACKSON CO., MO 64063

QT

© COPYRIGHT QUIKTRIP CORPORATION 2011
ANY UNAUTHORIZED USE, REPRODUCTION,
PUBLICATION, DISTRIBUTION, OR SALE IN
WHOLE OR IN PART, IS STRICTLY FORBIDDEN.

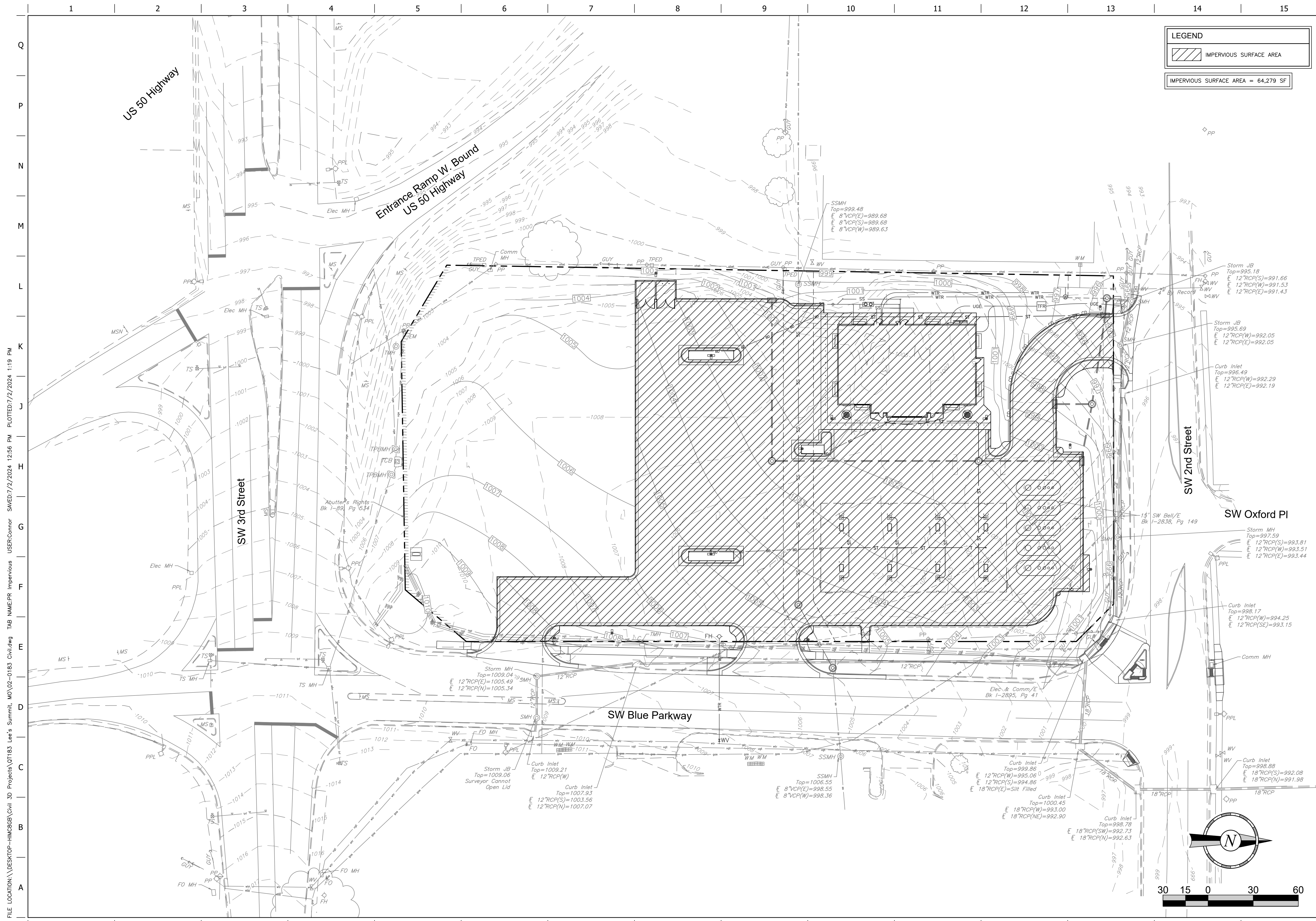
PROTOTYPE: P-118
DIVISION: 02
VERSION: 001
DESIGNED BY: CSH
DRAWN BY: CSH
REVIEWED BY: TRW

REV	DATE	DESCRIPTION

SHEET TITLE:
EXISTING CONDITIONS
IMPERVIOUS SURFACE PLAN

SHEET NUMBER:
EXHIBIT

ORIGINAL ISSUE DATE: 07/02/2025



FILE LOCATION: \\DESIGN\DESIGN\3D Projects\QT183 Lee's Summit, MO\02-0183 Lee's Summit, MO\02-0183 Civil.dwg USER: Connor SAVED: 7/2/2024 12:56 PM PLOTTED: 7/2/2024 1:19 PM

PROJECT NO.: 02-0183




Midwest Design Group
Kansas City

PO Box 860015
Shawnee, KS 66286-0015
P 913.248.9385

QuikTrip No. 0183

1001 SW BLUE PARKWAY
LEE'S SUMMIT, JACKSON CO., MO 64063



© COPYRIGHT QUIKTRIP CORPORATION 2011
ANY UNAUTHORIZED USE, REPRODUCTION,
PUBLICATION, DISTRIBUTION, OR SALE IN
WHOLE OR IN PART, IS STRICTLY FORBIDDEN.

PROTOTYPE: P-118
DIVISION: 02
VERSION: 001
DESIGNED BY: CSH
DRAWN BY: CSH
REVIEWED BY: TRW

REV	DATE	DESCRIPTION

SHEET TITLE:
**PROPOSED CONDITIONS
IMPERVIOUS SURFACE PLAN**

SHEET NUMBER:
EXHIBIT

ORIGINAL ISSUE DATE: 07/02/2025