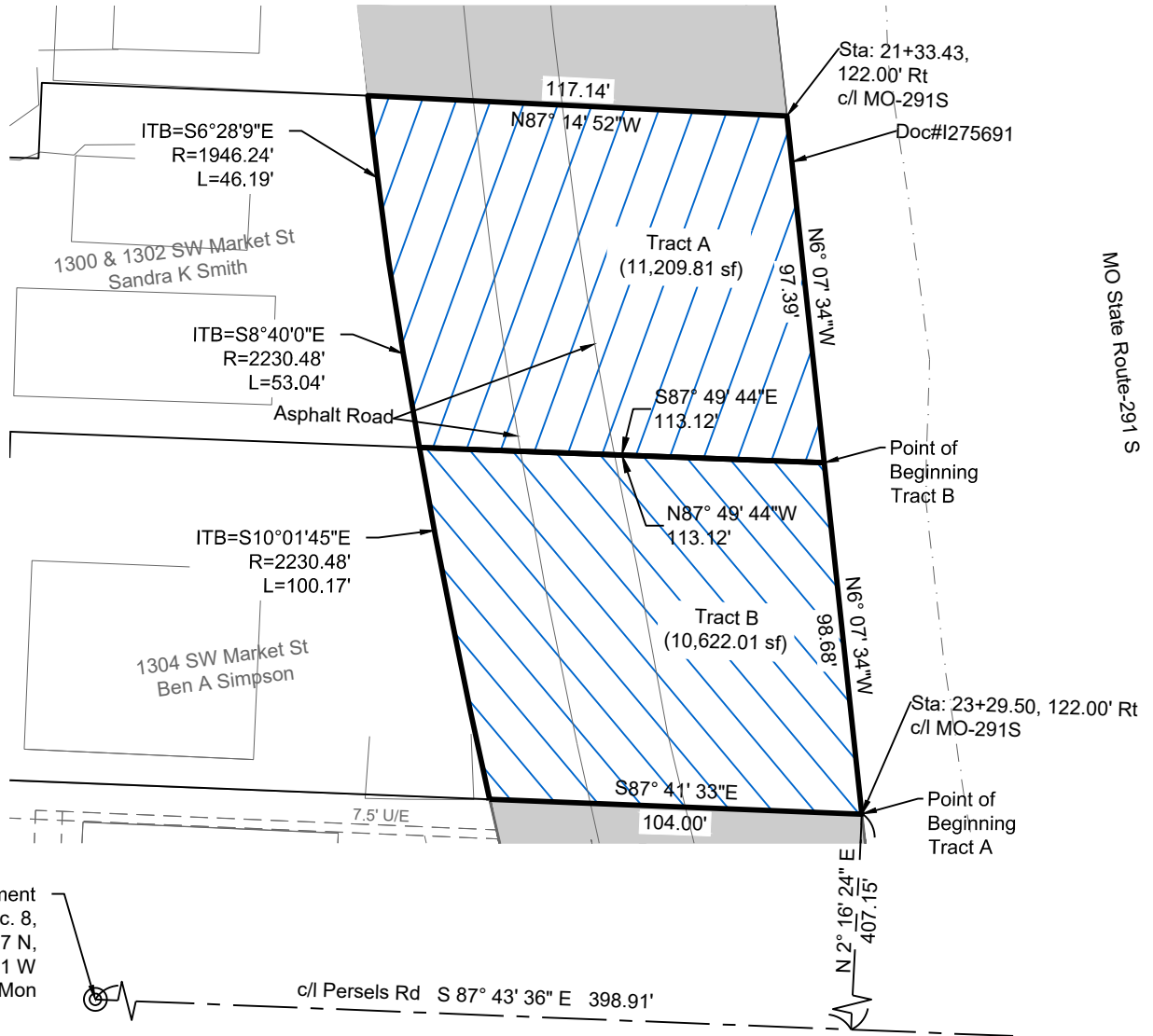


MO
Prepared By:
Matthew J. Schlicht
PLS-2012000102



Tract A Description

A tract of land being located in Section 8, Township 47, Range 31, Lee's Summit, Jackson County Missouri, being more particularly described as follows:

Commencing at the Southwest Corner of said Section 8; thence S87°43'36"E, a distance of 398.91 feet, along the South line of said Section 8; thence N2°16'24"E, a distance of 407.15 feet to the Point of Beginning; thence N6°07'34"W, a distance of 98.68 feet; thence N87°49'44"W, a distance of 113.12 feet; thence along a curve to the left having an initial tangent bearing of S10°01'45"E and a radius of 2230.48 feet, an arc distance of 100.17 feet; thence S87°41'33"E, a distance of 104.00 feet to the Point of Beginning.

Tract Contains 10,622.01 sf (0.24 Acres)

Tract B Description

A tract of land being located in Section 8, Township 47, Range 31, Lee's Summit, Jackson County Missouri, being more particularly described as follows:

Commencing at the Southwest Corner of said Section 8; thence S87°43'36"E, a distance of 398.91 feet, along the South line of said Section 8; thence N2°16'24"E, a distance of 407.15 feet; thence N6°07'34"W, a distance of 98.68 feet to the Point of Beginning; thence N6°07'34"W, a distance of 97.39 feet; thence N87°14'52"W, a distance of 117.14 feet; thence along a curve to the left having an initial tangent bearing of S6°28'9"E and a radius of 1946.24 feet, an arc distance of 46.19 feet; thence along a curve to the left having an initial tangent bearing of S8°40'0"E and a radius of 2230.48 feet, an arc distance of 53.04 feet; thence S87°49'44"E, a distance of 113.12 feet to the Point of Beginning.

Tract Contains 11,209.81 sf (0.26 Acres)

Exhibit

Exhibit

SHEET 1 OF 1

DATE:

3/19/2025

PROJECT NUMBER:

Oldham

REV. TO DWG.:

N/A

SCALE:

1"=50'

Exhibit

Oldham Village

Mo-291 Tract 5
Lee's Summit, Jackson County, Missouri



ENGINEERING
ENGINEERING & SURVEYING
SOLUTIONS

50 SE 30TH STREET
LEE'S SUMMIT, MO 64082
P:(816) 623-9888 F:(816) 623-9849