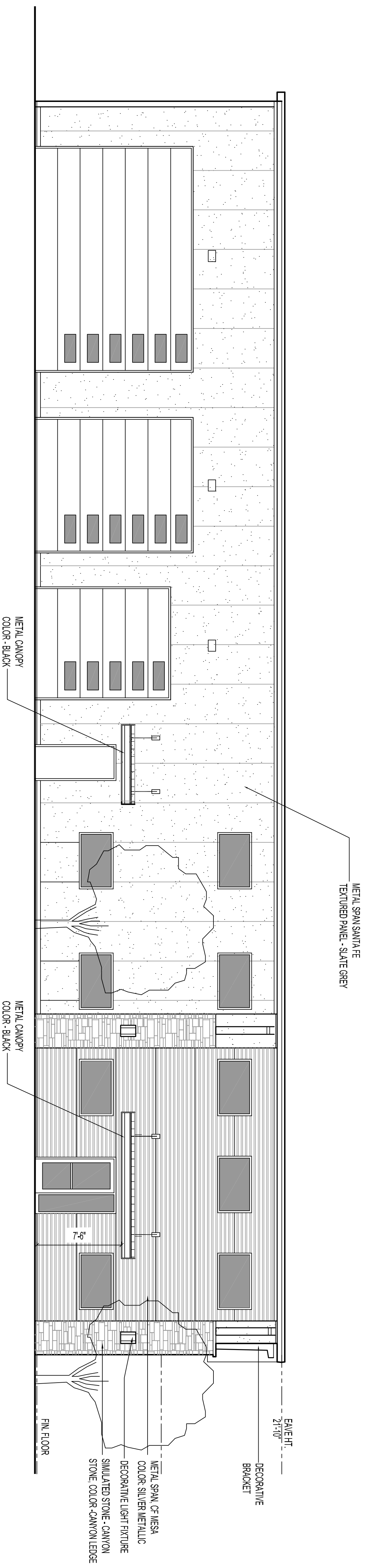
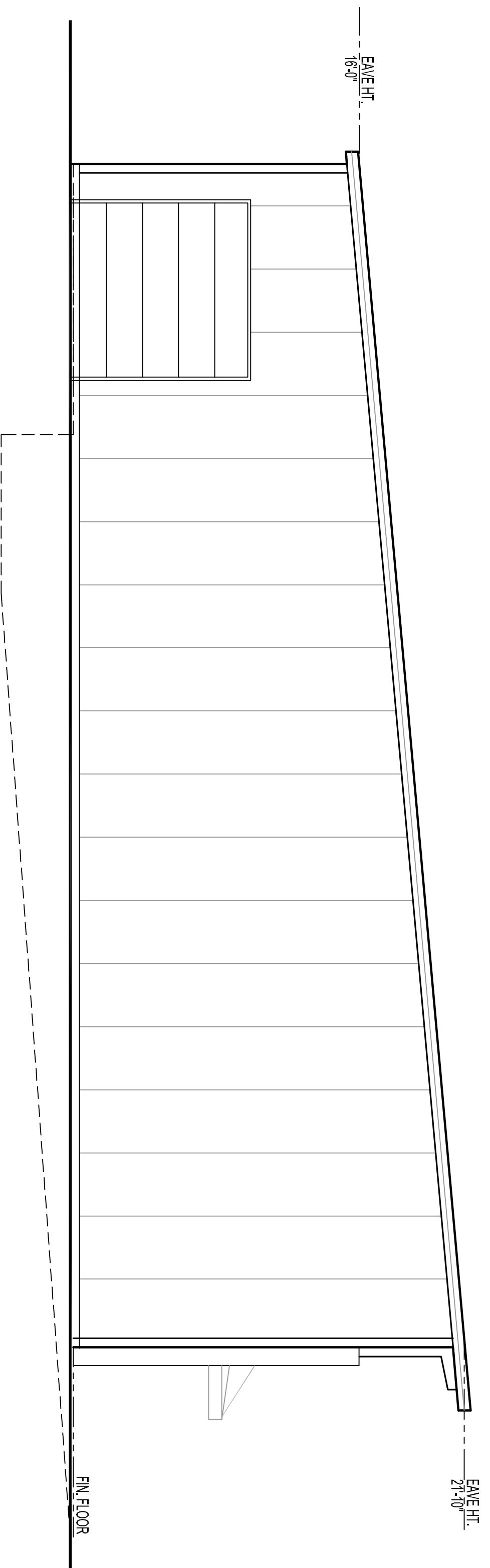


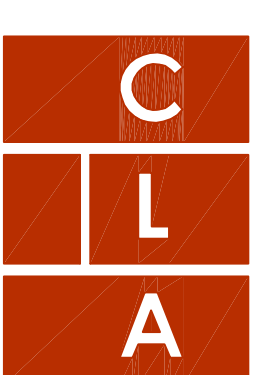
1 Side Elevation
SCALE: 3/16"=1'-0"



2 Front Elevation
SCALE: 3/16"=1'-0"



3 Side Elevation
SCALE: 3/16"=1'-0"



Craig Luebbert
Architecture
24 NW Chipman 'B'. 816.875.4863

Construction Documents
MAR Building Solutions

Newberry Bussiness Park
Lee's Summit, MO.

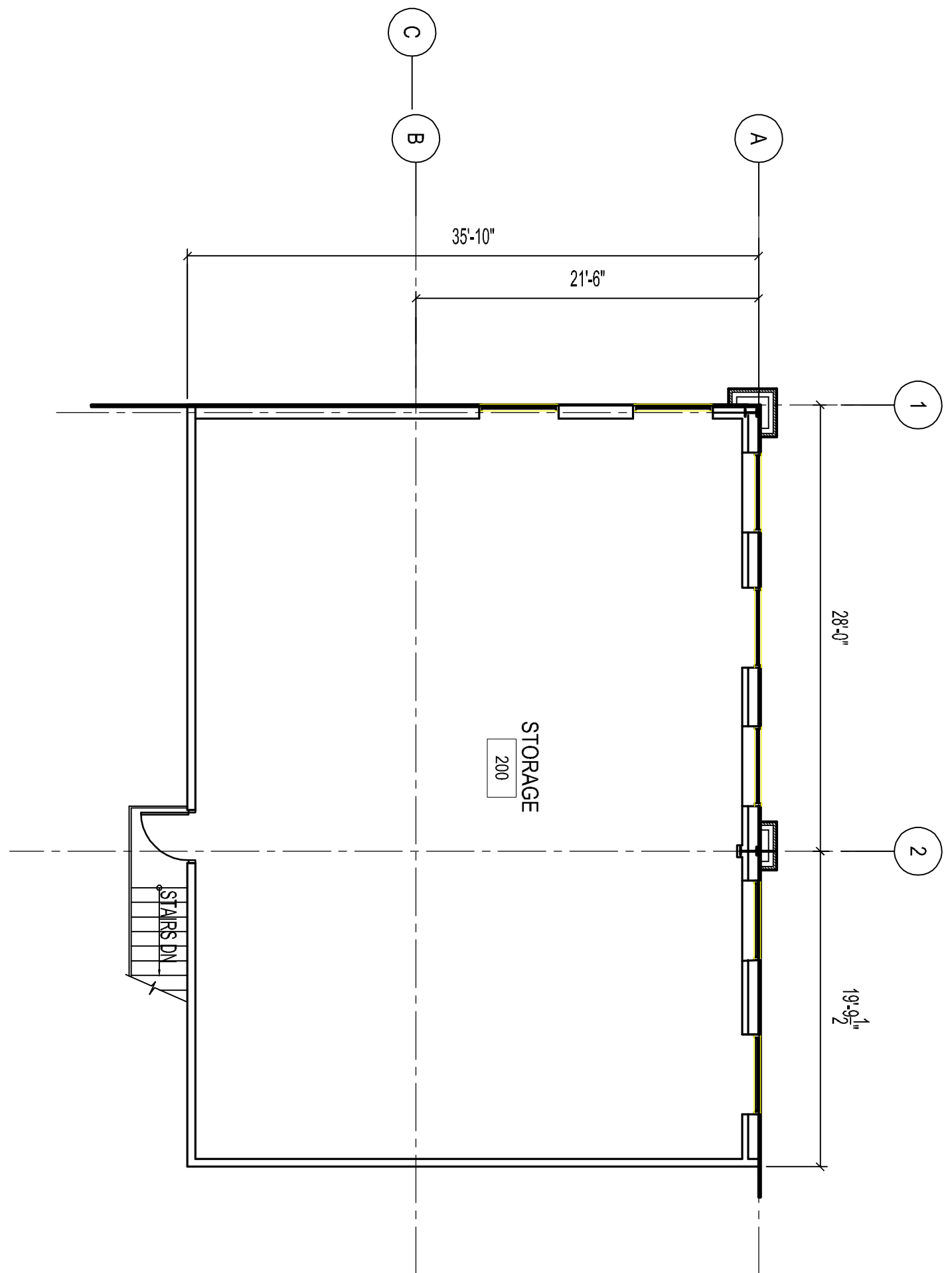
DATE REVISION
5.11.18

REVISIONS

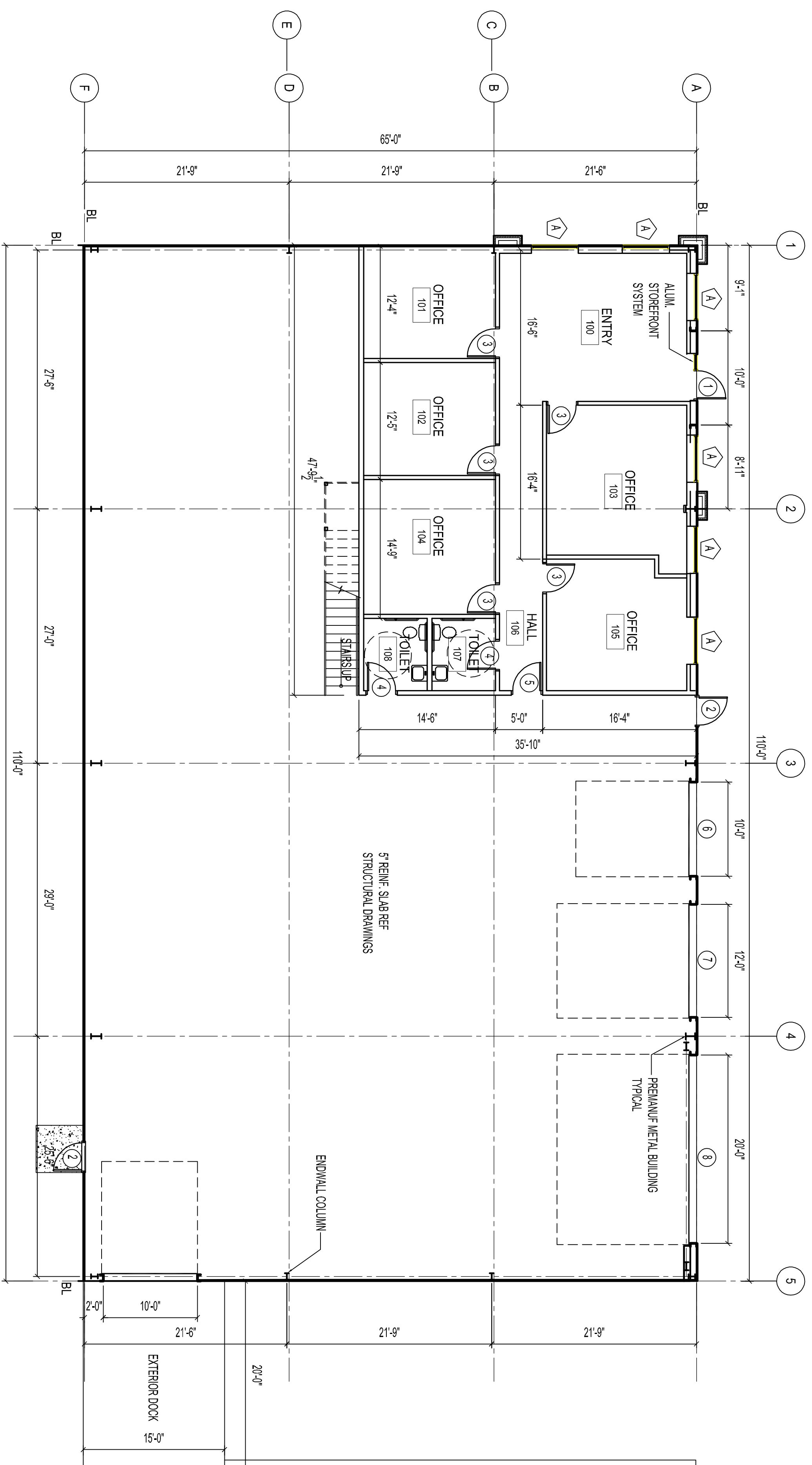
ARCHITECTURAL PROJECT NUMBER

SHEET NUMBER

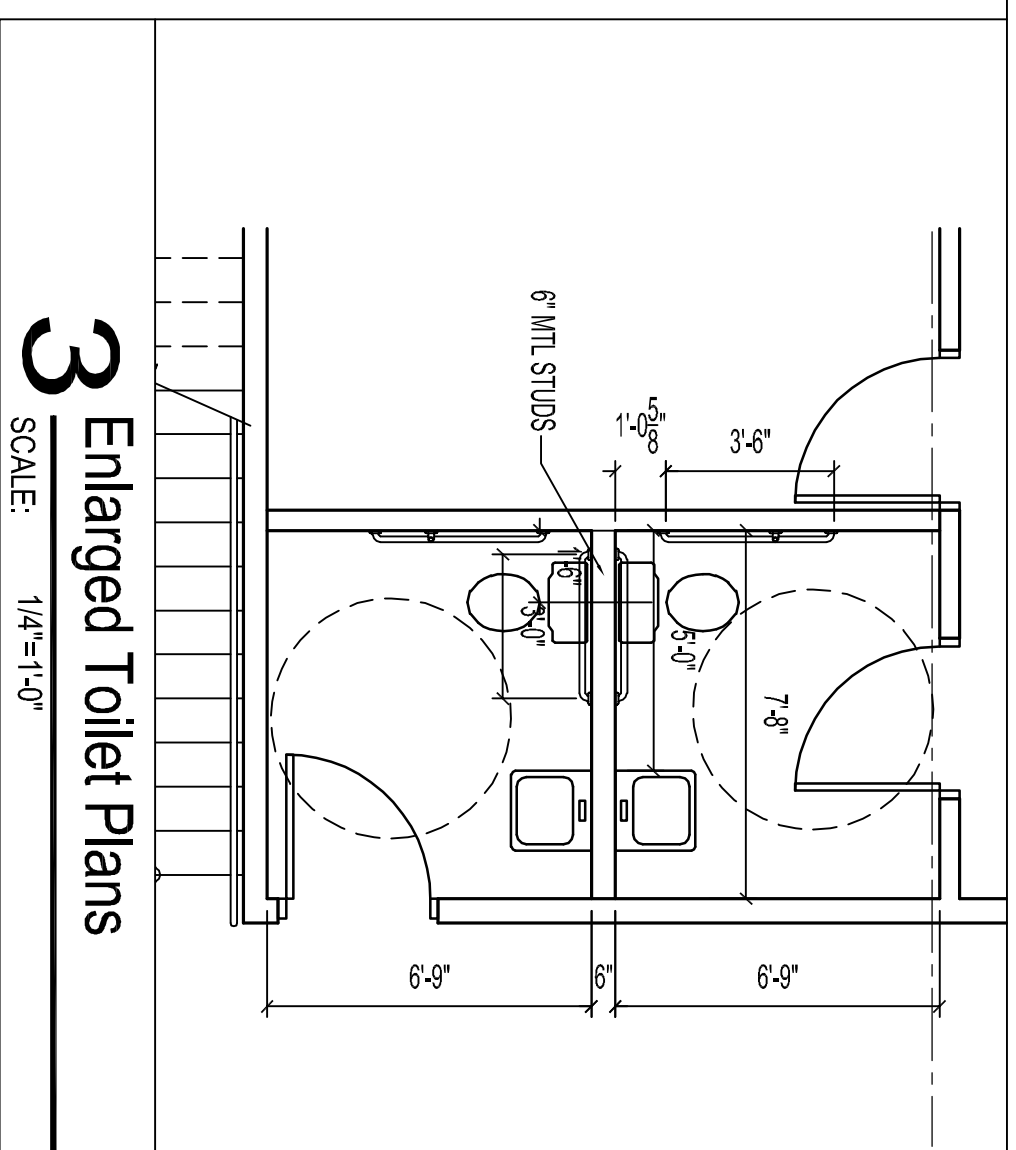
A200



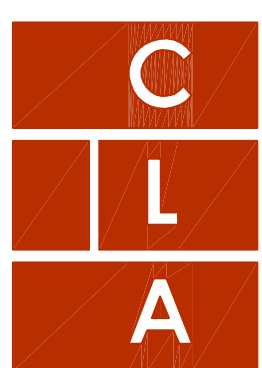
2 Upper Level
SCALE: 1/8"=1'-0"



1 Floor Plan
SCALE: 1/8"=1'-0"



3 Enlarged Toilet Plans
SCALE: 1/4"=1'-0"



Craig Luebbert
Architecture
24 NW Chipman 'B'. 816.875.4863

Construction Documents
MAR Building Solutions

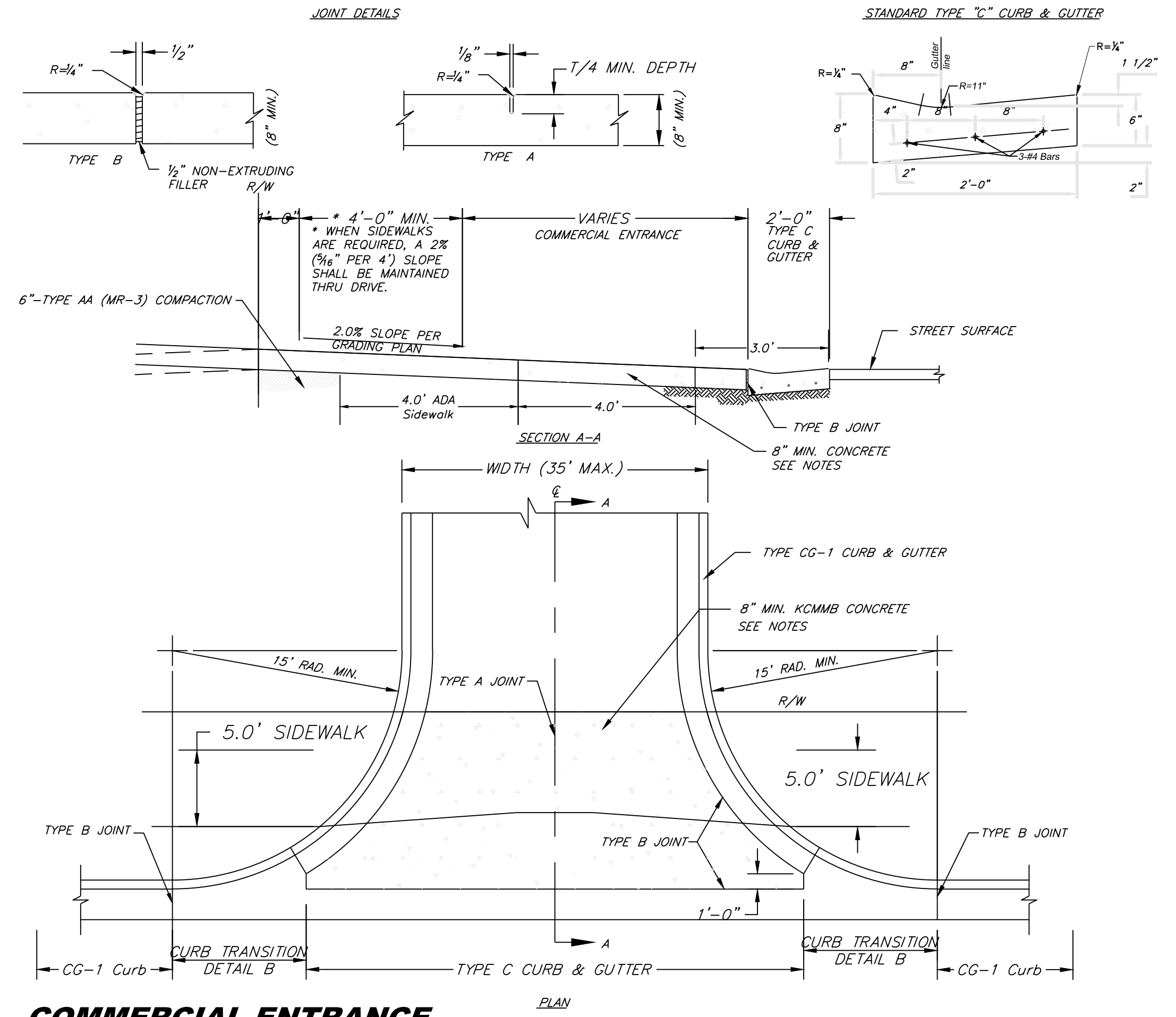
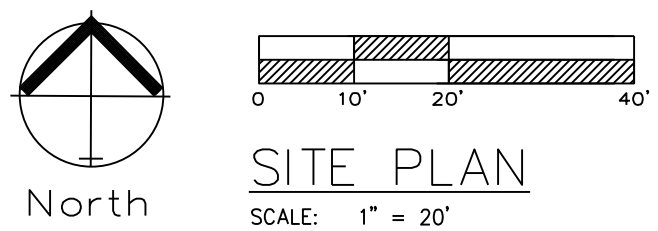
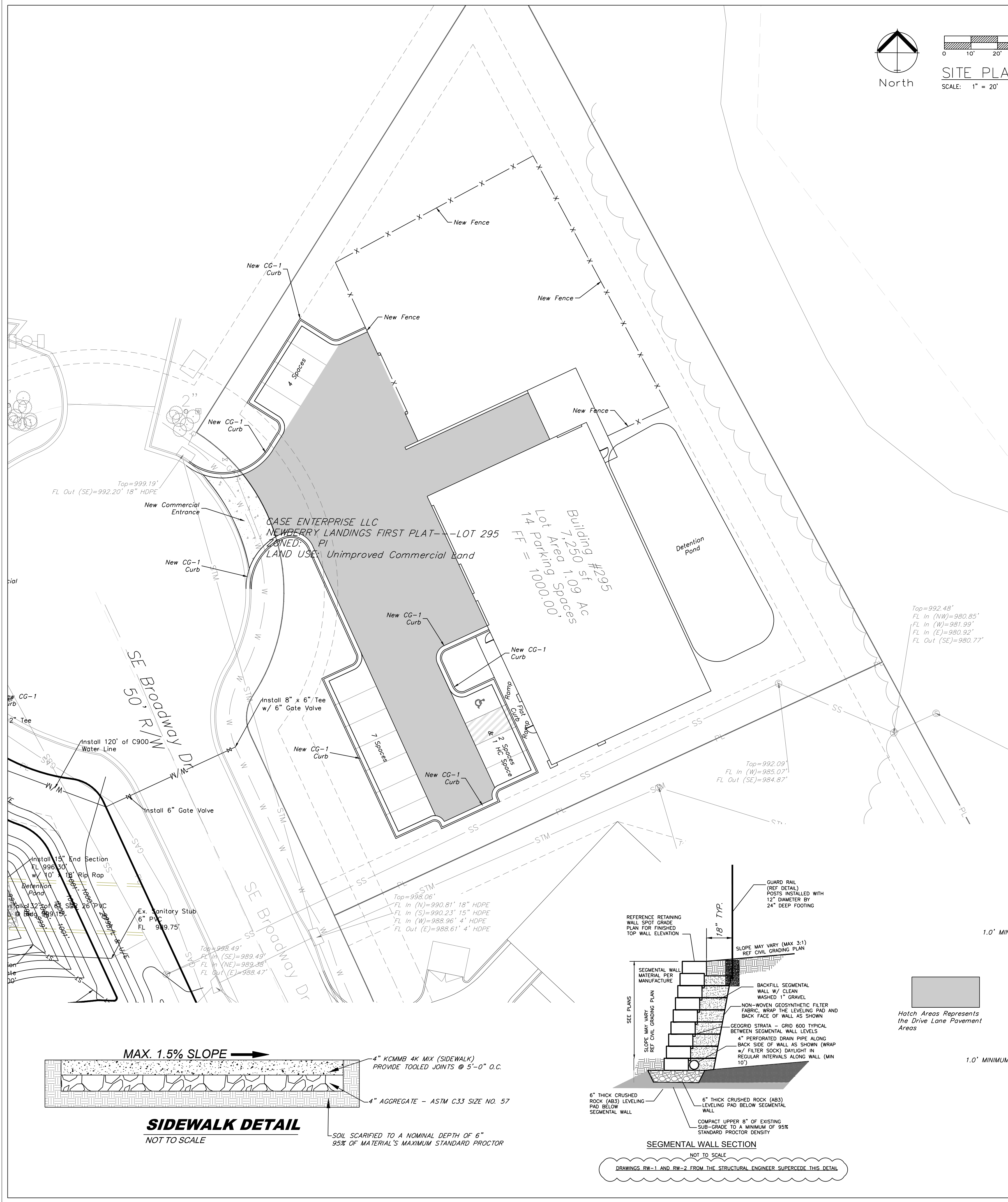
Newberry Bussiness Park
Lee's Summit, MO.

SHEET NUMBER

A100

ARCHITECTURAL PROJECT NUMBER

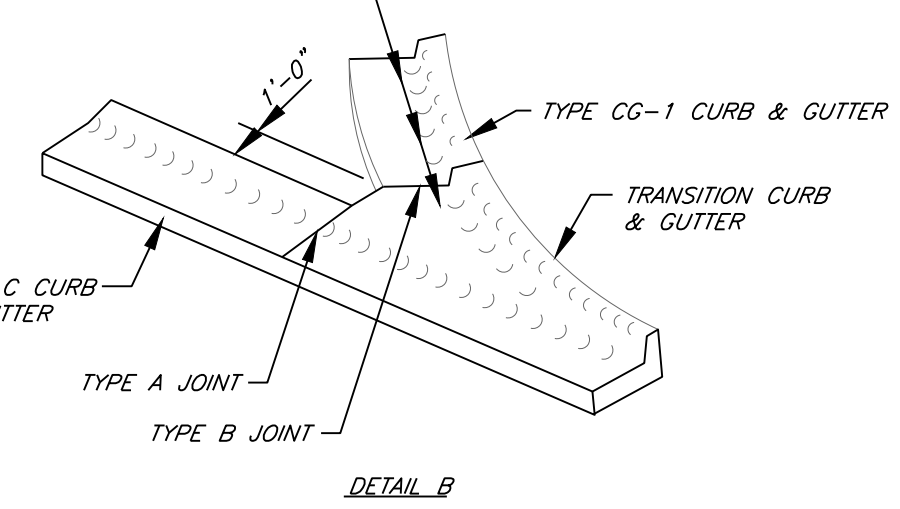
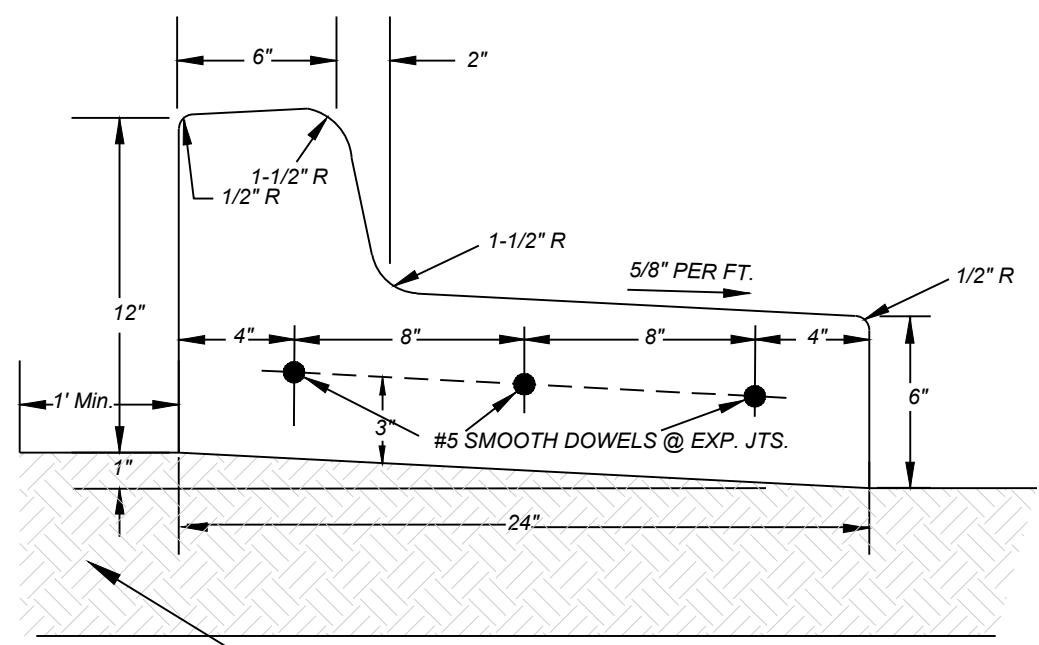
DATE REVISION
5.11.18



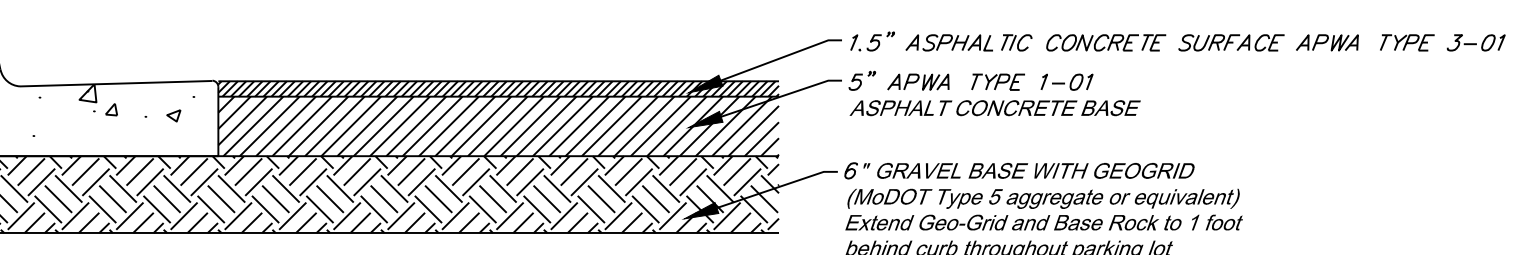
COMMERCIAL ENTRANCE
NOT TO SCALE

- COMMERCIAL DRIVE NOTES:**
1. THE TOP 6" OF DRIVEWAY SUBGRADE SHALL BE COMPACTED TO 95% OF STANDARD MAXIMUM DENSITY.
 2. ALL CONCRETE POURED ON THE ROW (SIDEWALK, DRIVE APPROACH, CURBS) SHALL UTILIZE AN APPROVED KCMMB-4k CONCRETE MIX DESIGN.
 3. EXPANSION JOINT FILLER AND JOINT SEALING COMPOUND SHALL CONFORM TO STANDARD SPECIFICATIONS SECTION 2209.2 (APWA).
 4. CURING MEMBRANES SHALL CONFORM TO STANDARD SPECIFICATIONS SECTION 2208.2.F (APWA).
 5. 6 x 6-W2.9 x W2.9 REINFORCING SHALL BE PLACED IN CENTER OF SLAB THICKNESS.
 6. CONTRACTION JOINTS SHALL BE SPACED AT 12' MAX., BOTH DIRECTIONS.
 7. INSTALL TWO 3/8" x 2' SMOOTH DOWELS AT JOINTS FOR TYPE "C" CURB. SEE CURB STANDARDS FOR PLACEMENT.
 8. FORM 3/4" LIP AT PAVEMENT LINE ON DRIVES IN TYPE "B" CURBS.
 9. TRUNCATED DOMES ARE NOT TO BE INSTALLED AT THE COMMERCIAL ENTRANCE.

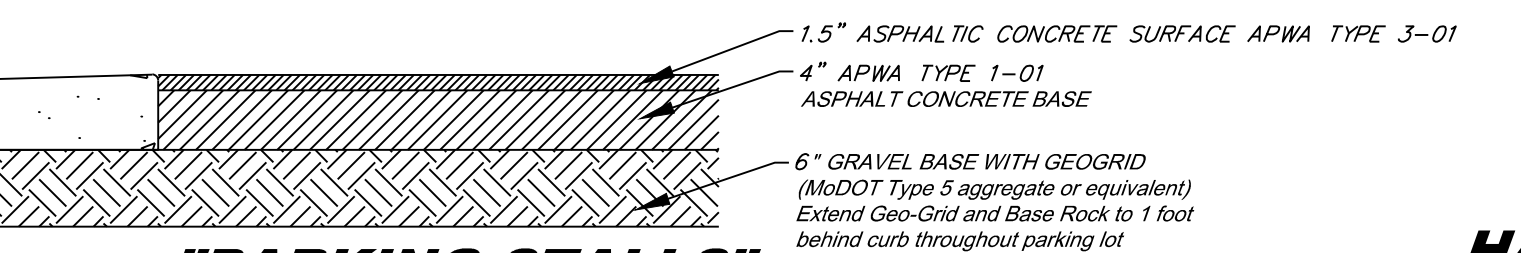
TYPE CG-1 STRAIGHT BACK CURB & GUTTER N.T.S.



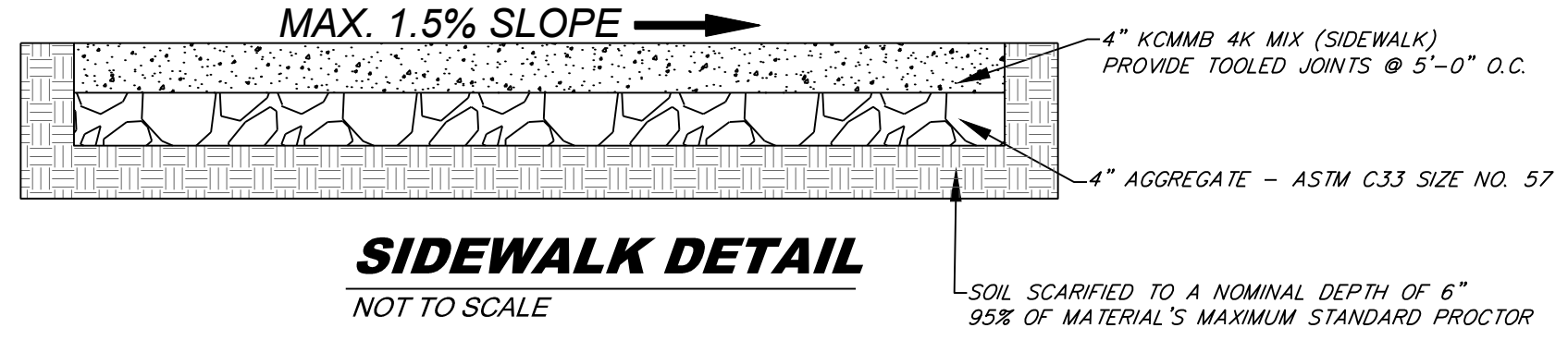
NOTE: REFERENCE ARTICLE 12, SECTION 12.120 PART F, OF THE UNIFIED DEVELOPMENT ORDINANCE FOR THICKNESS



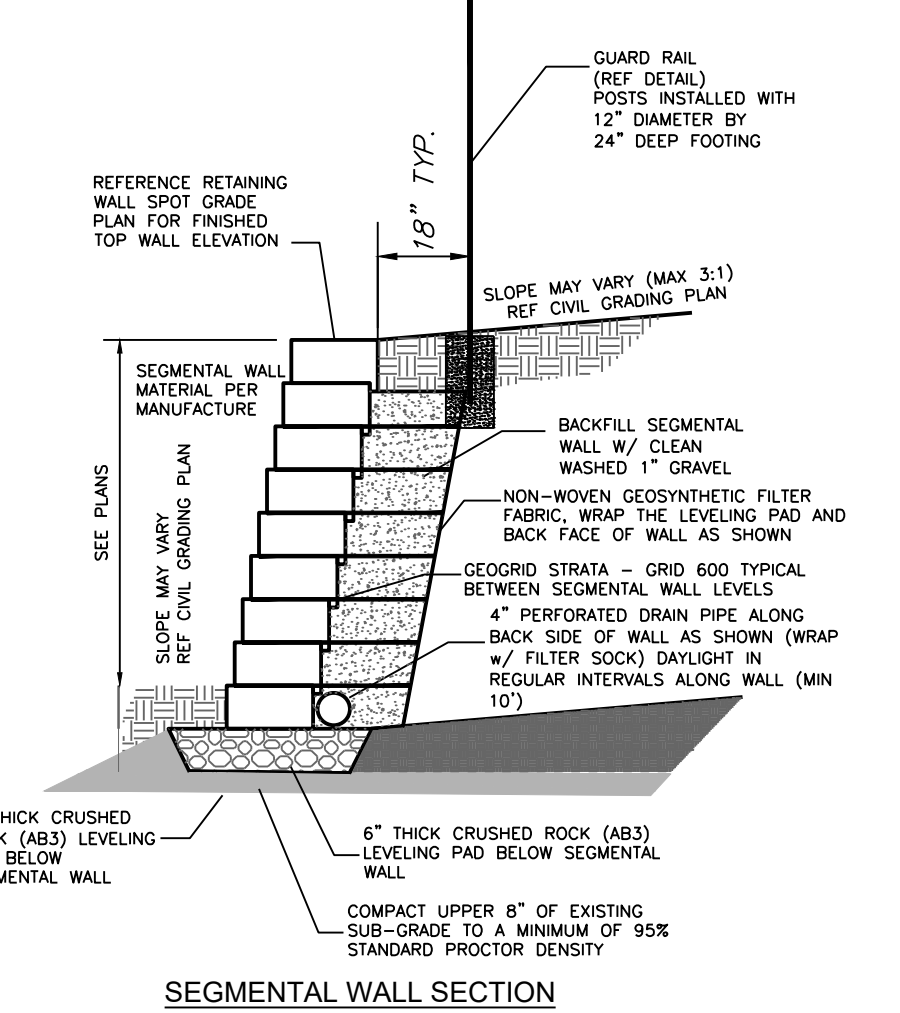
"DRIVE LANE" PRIVATE ASPHALT PAVEMENT
NOT TO SCALE



"PARKING STALLS" PRIVATE ASPHALT PAVEMENT
NOT TO SCALE

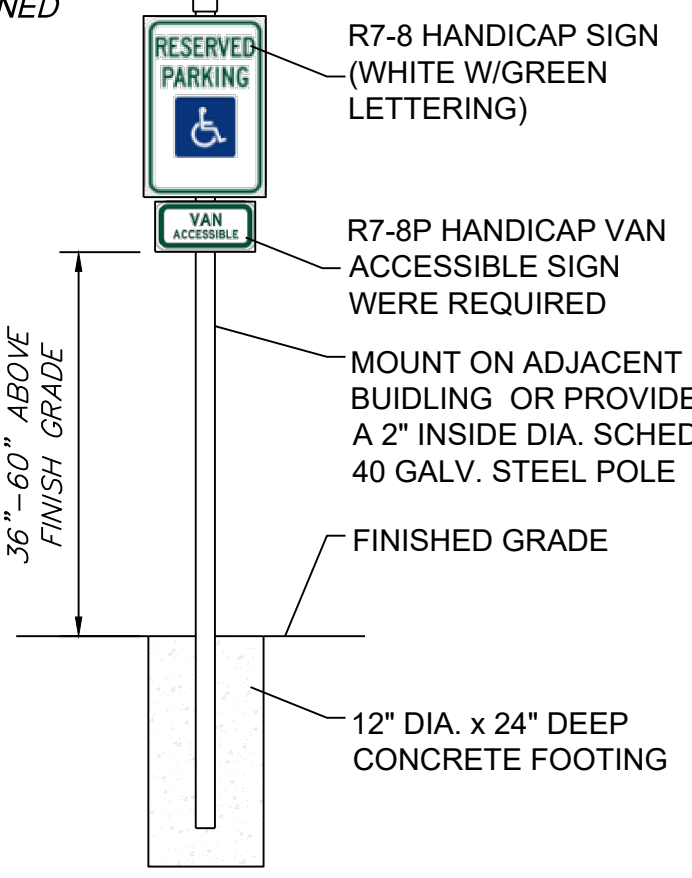


SIDEWALK DETAIL
NOT TO SCALE



SEGMENTAL WALL SECTION
NOT TO SCALE

SIGN MAY BE WALL MOUNTED DIRECTLY TO BUILDING. DIMENSIONS MUST BE MAINTAINED



HANDICAP SIGN DETAIL
NOT TO SCALE

Professional Registration
Missouri
Engineering 200502188-D
Surveying 200508318-D
Kansas
Engineering E-1695
Surveying LS-218
Oklahoma
Engineering 6254
Nebraska
Engineering CA2821

Project
NEWBERRY LANDINGS, LSNMO
Issue Date
March 12, 2018

Lee's Summit, Jackson County, Missouri

Construction Plans for:
Lot 295, Newberry Landings First Plat
Lee's Summit, Jackson County, Missouri

Matthew J. Slicht
MO PE 2006019708
KS PE 19071
OK PE 25226

REVISIONS