

RESOLUTION NO. 18-22

A RESOLUTION AUTHORIZING CITY STAFF TO FILE APPLICATIONS WITH KCP&L FOR THE KCP&L SOLAR POWER REBATE PROGRAM FOR THE POTENTIAL CONSTRUCTION OF SOLAR FACILITIES ON CITY PROJECTS, AND FURTHER AUTHORIZING THE PREPARATION OF A REQUEST FOR PROPOSALS FOR ADDITIONAL MUNICIPAL SOLAR PROJECTS.

WHEREAS, the City issued RFP 2018-300 for a Lee's Summit Solar Project which sought proposals from qualified firms/providers to design, procure, install, commission, operate and maintain a ground mounted solar photovoltaic system for the Lee's Summit Animal Control Facility located at 1991 SE Hamblen Road, Lee's Summit, Missouri; and,

WHEREAS, as a result of RFP 2018-300, the City executed a "Build, Operate and Lease Agreement with Option to Purchase" with MC Power Company, Inc., dated December 24, 2017, which provided for the placement of solar facilities at the Animal Control Facility; and,

WHEREAS, on December 12, 2018, the Community and Economic Development Committee (CEDC) of the City Council received an update on the Animal Control Facilities solar project from representatives of MC Power Company, at which time the CEDC also learned that the KCP&L Solar Power Rebate Program continues to provide solar power rebates in limited quantities (maximum of \$8 million in rebates in the in the "KCP&L Missouri area" which includes Lee's Summit) and that there has been significant demand for such rebates by other applicants which may quickly exhaust the available amount of rebates; and,

WHEREAS, the City Council believes it would be in the best interest of the City to authorize City staff to make applications with the KCP&L Solar Power Rebate Program in order to preserve the option to receive such rebates which are in limited supply from KCP&L for potential future City solar projects; and,

WHEREAS, the City Council further desires to authorize the preparation of an additional request for proposals for additional solar power facilities for City projects based on further evaluation of the scope and placement of such facilities on City property.

NOW, THEREFORE, BE IT RESOLVED BY THE CITY COUNCIL OF THE CITY OF LEE'S SUMMIT AS FOLLOWS:

SECTION 1. The City Council hereby directs staff to file one or more applications with KCP&L for the KCP&L Solar Power Rebate program, to request rebates for the City's potential use of photovoltaic solar panels on City-owned facilities in anticipation implementing the request for proposals that is authorized pursuant to Section 2 of this Resolution.

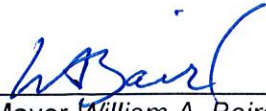
SECTION 2. The City Council hereby authorizes the preparation of a request for proposals from qualified firms/providers to design, procure, install, commission, operate and maintain solar photovoltaic systems at Lee's Summit public facilities, in which the selected firm or provider will supply such services on City facilities as later identified by the City.

SECTION 3. Should any section, sentence, or clause of this resolution be declared invalid or unconstitutional, such declaration shall not affect the validity of the remaining sections, sentences, or clauses.

RESOLUTION NO. 18-22

SECTION 4. That this Resolution shall be in full force and effect from and after its passage and approval.

Passed by the City Council of the City of Lee's Summit, Missouri, this 18th day of December, 2018.



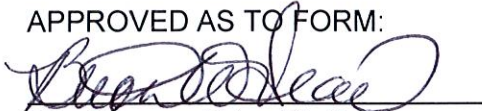
Mayor *William A. Baird*

ATTEST:



City Clerk *Trisha Fowler Arcuri*

APPROVED AS TO FORM:



City Attorney *Brian W. Head*



Solar Power Rebate

The KCP&L Solar Power Rebate encourages the use of solar technology, a renewable power source that has a positive impact on the planet.

2019 Solar Rebate Information

- ✓ Customers will have up to 90 days to file an interconnection agreement.
- ✓ KCP&L Missouri and GMO each have \$8 million available for rebates which will be available on a first come, first serve basis.
- ✓ Rebates will be paid out at \$0.50 per watt before June 30th of 2019. Start July 1, rebates will be paid out at \$0.25 per watt until the funds are depleted.
- ✓ Business Social Service Programs: \$500k in each jurisdiction will be made available to non-profit businesses that receive general electric service and are primarily used for low-income public social services such as food banks, food pantries, soup kitchens, homeless shelters, employment servicers, worker training, job banks, child care and otherwise determined by KCP&L.

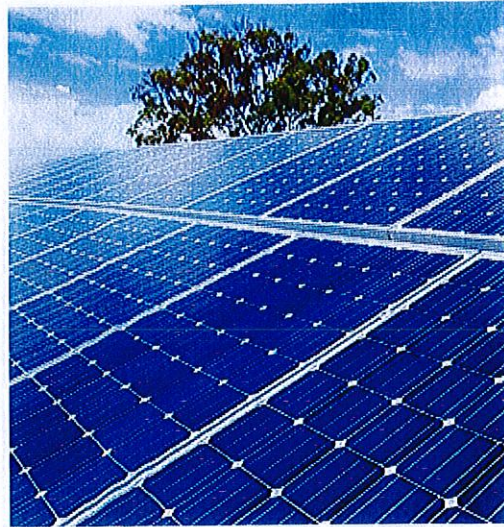
How it works

Renewable energy is a vital component of the future energy generation mix. The most popular type of solar power is photovoltaic (PV) cells in panels, strips or blocks. The cells turn the sun's radiation into an electrical signal, which is converted for use in your home. You can rely on solar power to supply a percentage of your electricity, though most customers also use backup power from the grid. We're encouraging investment in solar energy by providing a rebate for solar power. You may also be eligible for [Federal tax credits](#).

Missouri law determines that the costs of this rebate program are shared among all our Missouri customers, not just those making an investment in solar energy. The payment of solar rebates is now subject to a one-time program limit, meaning the amount that KCP&L spends on rebates paid

to solar customers cannot exceed \$8 million in the KCP&L Great Missouri Operations area or \$8 million in the KCP&L Missouri area. To find out which area you live in click [here](#).

Missouri law has also established the amount per watt used to calculate rebate payments every year until 2020, when the rebate program will end.*



Earn a Rebate for Investing in Solar Power

Application received on or before December 31 of the year	Operational on or before June 30th of the year*	Solar Rebate per Watt
2013	2014	\$2.00
2014	2015	\$1.50
2015	2016	\$1.00
2016	2017	\$0.50
2017	2018	\$0.50
2018	2019	\$0.50
2019	2019	\$0.50
2019	2023	\$0.25

Rebates will be paid if the customer meets all the requirements but the operational date is missed due to actions by the company.

The Solar Power Rebate is a popular program and given the rebate program limit, we've established a transparent and fair application process:

Solar power rebate process

- Solar rebate *or* solar rebate and net metering application received.
- Solar rebate award or denial notification.
- Net metering application approved or denied within 10 days of receipt.
- Following administrative approval, the application proceeds to engineering for technical review.
- Customer has 12 months from date of the rebate award to complete construction.
- When construction is complete, customer should request a field inspection from KCP&L by responding to the email notification that the net metering application was approved.
- Pending a successful inspection, KCP&L will have 30 days to schedule meter exchange. The day the meter is exchanged is the "system operational date," which is the day your solar rebate payment begins processing.
- Solar rebates are paid upon completion of project and receipt of required documents and signatures.

Information on the amount of rebates paid with respect to the program limit for each service area (KCP&L Missouri and KCP&L Greater Missouri Operations) is available [here](#).

See [Missouri House Bill SB 564](#).

*Once your net metering application has been received by KCP&L and an initial review shows that the forms are filled out correctly, KCP&L Engineering will review the application. For projects 10 kilowatts or less, KCP&L has 30 days to review the net metering application. For projects more than 10 kilowatts, KCP&L has 90 days to review the net metering application.

Applying for a solar rebate

1. **Submit the appropriate application** (listed below) for your state.
2. Upon approval, install your renewable system.

Missouri Online Application

Kansas Online Application

or view and print

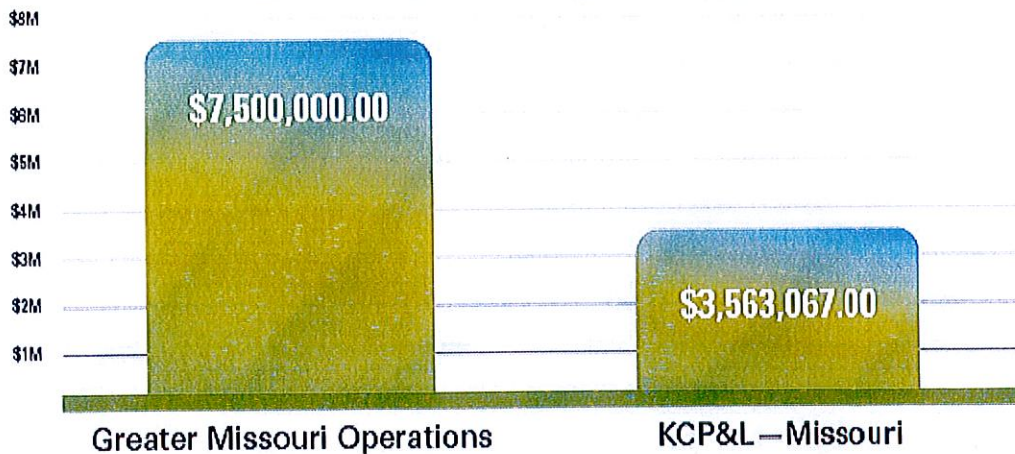


Current Program Spend

This chart reflects the current program spend for the solar rebate program.

The 2019 Solar Rebates Awarded chart includes the current rebate program spend for KCP&L & GMO:

2019 Solar Rebates Awarded



Posted December 6, 2018

Important notices

- ✓ If any Solar Rebate application does not meet the qualifications, it will fall out of the queue, and those funds will be available to the next qualifying customer.
- ✓ The numbers reflected in the chart above are subject to change as we evaluate project sizing, duplicate applications, cancellations and more.
- ✓ The amount that KCP&L spends on rebates paid to solar customers cannot exceed \$8 million in the Great Missouri Operations area or \$8 million in the KCP&L Missouri area.

[Back to Top](#)