

Advisory Commissions Realignment Strategy

June 21, 2022



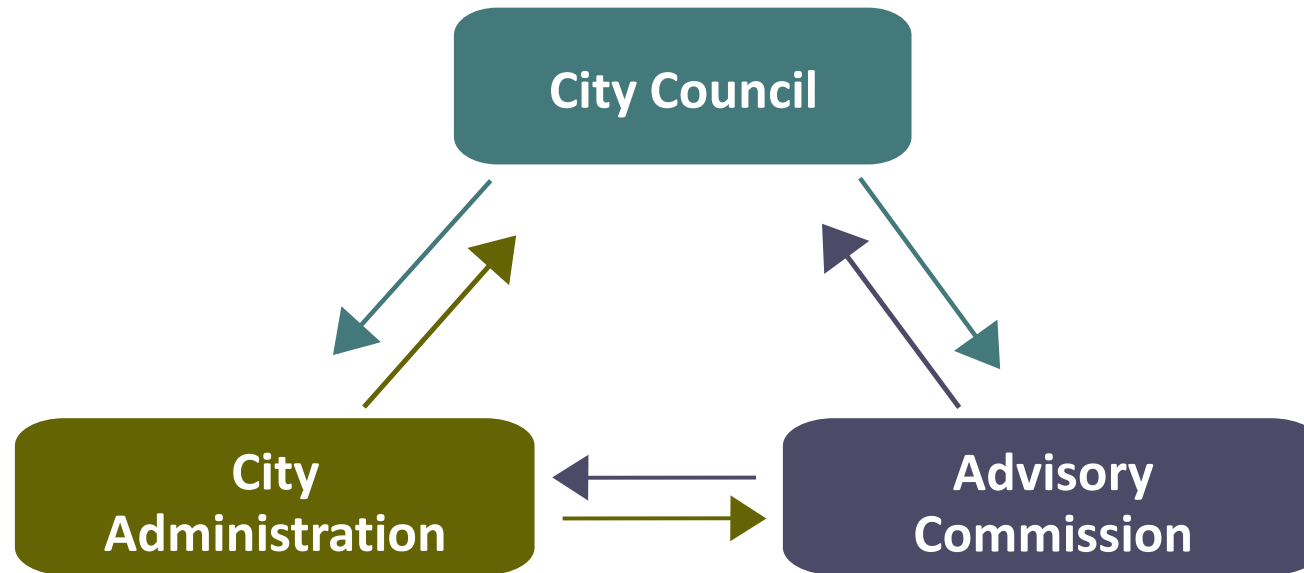
Yours Truly



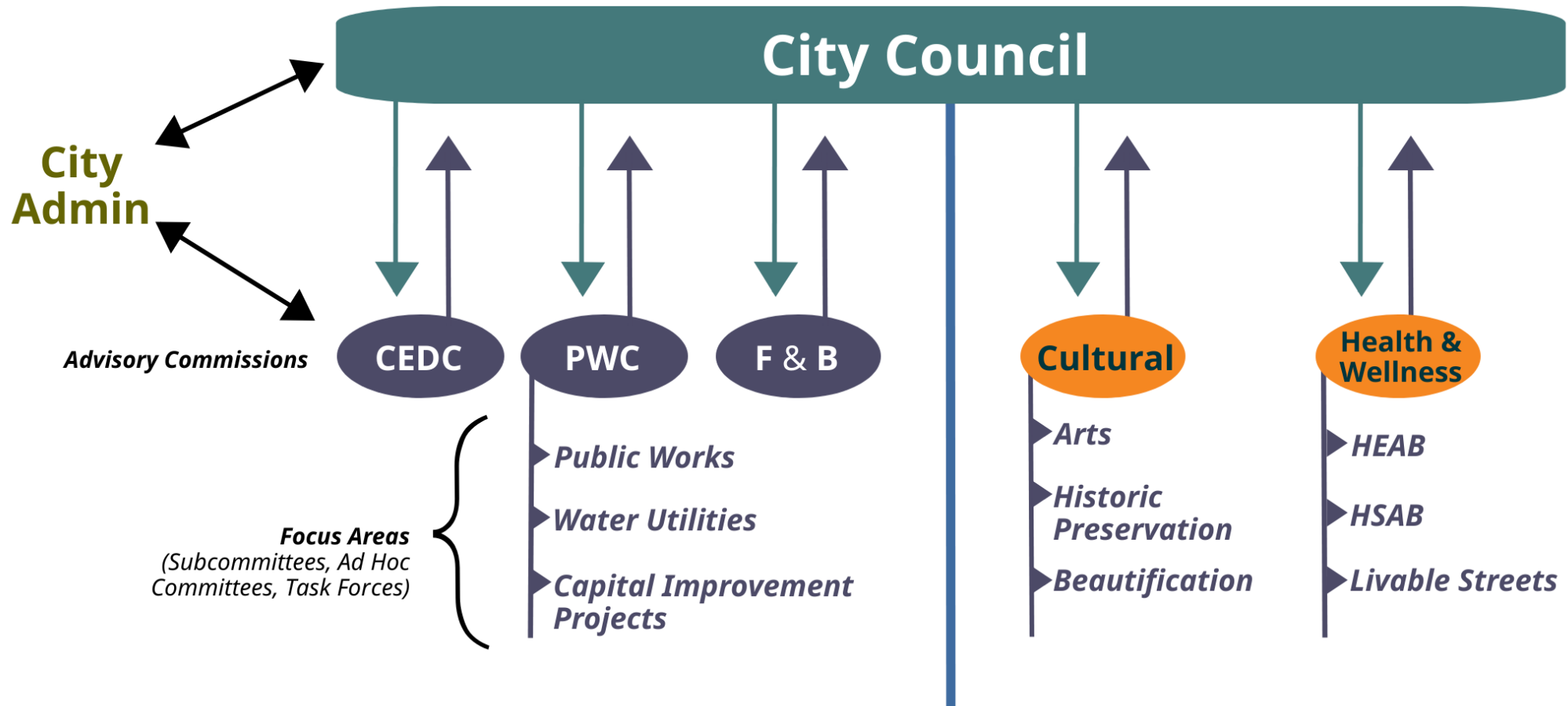
Overview

- Periodically reevaluating citizen boards and commissions is a standard practice upon completion of a city's strategic planning process.
- Recent completion of the Ignite Strategic Plan provides an opportunity to align citizen commission roles with new strategic goals.
- Demonstrate how new advisory commissions will follow the same structure as current commissions using the proposed Cultural Commission as an example.
- Explain how the transition from project-based commissions to advisory commissions creates stronger strategic alignment.
- Opportunity for questions and discussion.

Organization Relationship



Advisory Commission Structure



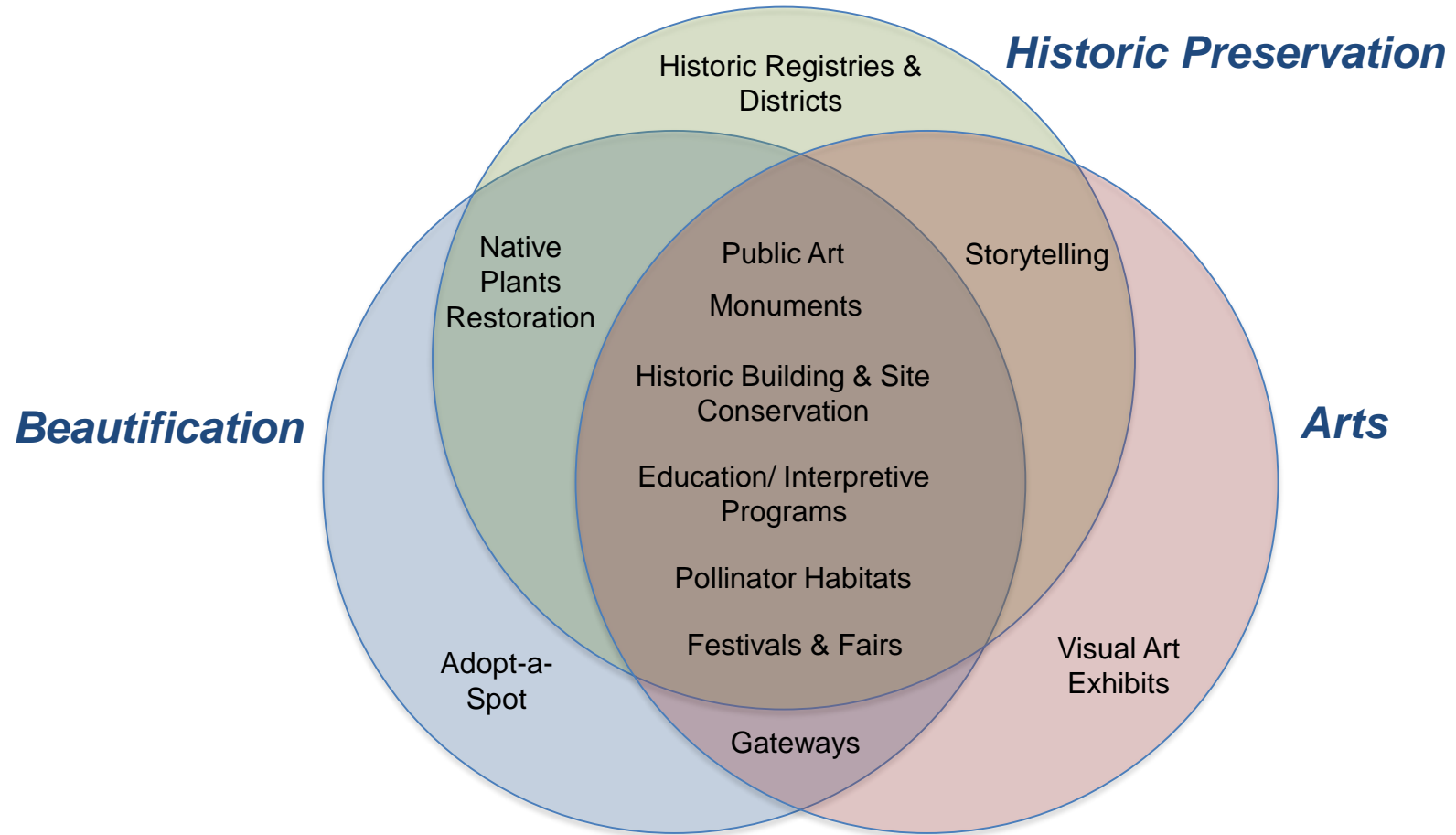
Cultural Commission

Combine *Arts Council*, *Historic Preservation Commission* and *Beautification Commission* into one advisory *Cultural Commission*.

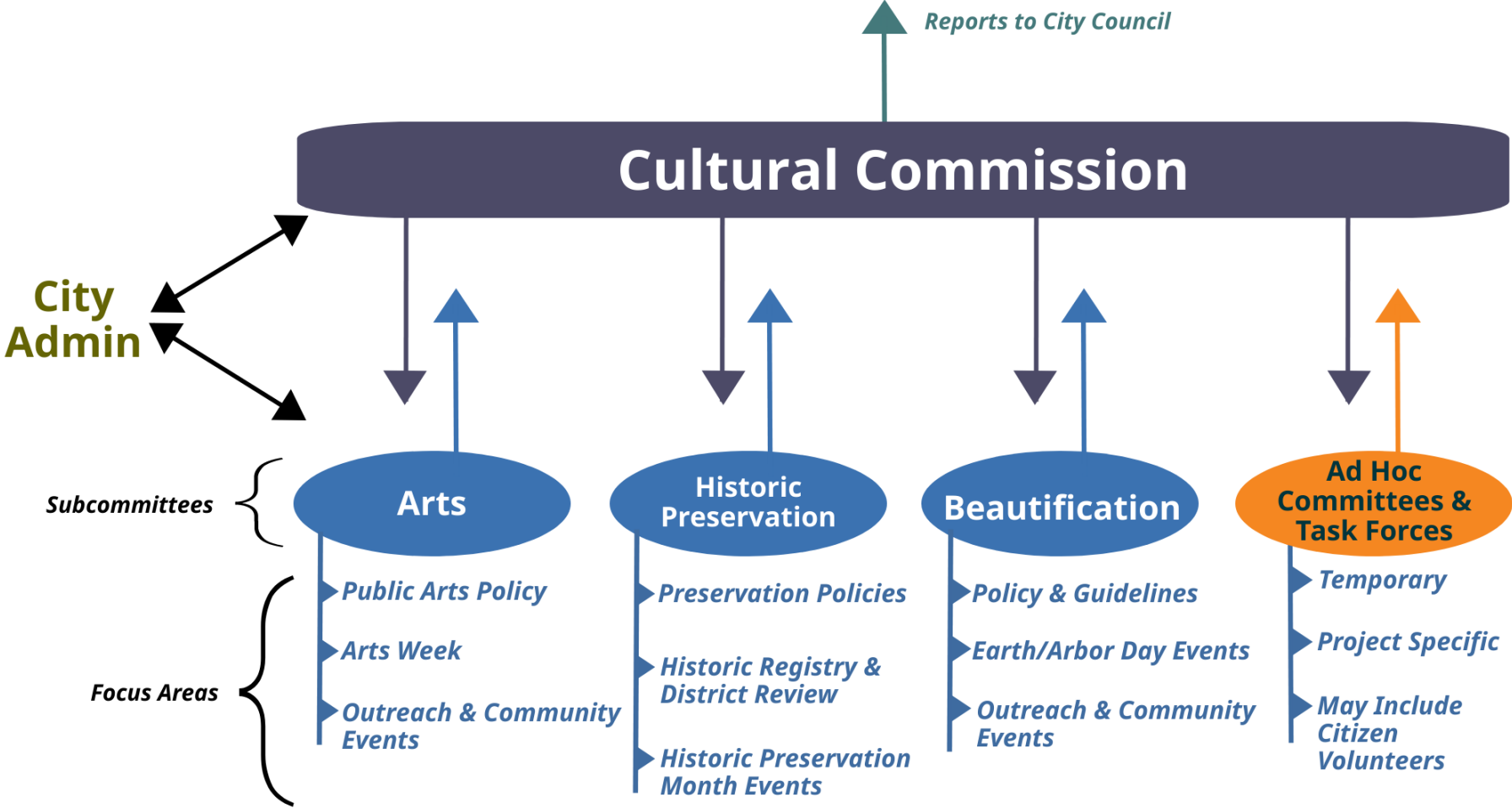
- Elevate the public realm and public discourse.
- Help achieve comprehensive and strategic plan goals.
- Promotes greater community engagement.



Projects and Programs



Advisory Commission Flow Chart

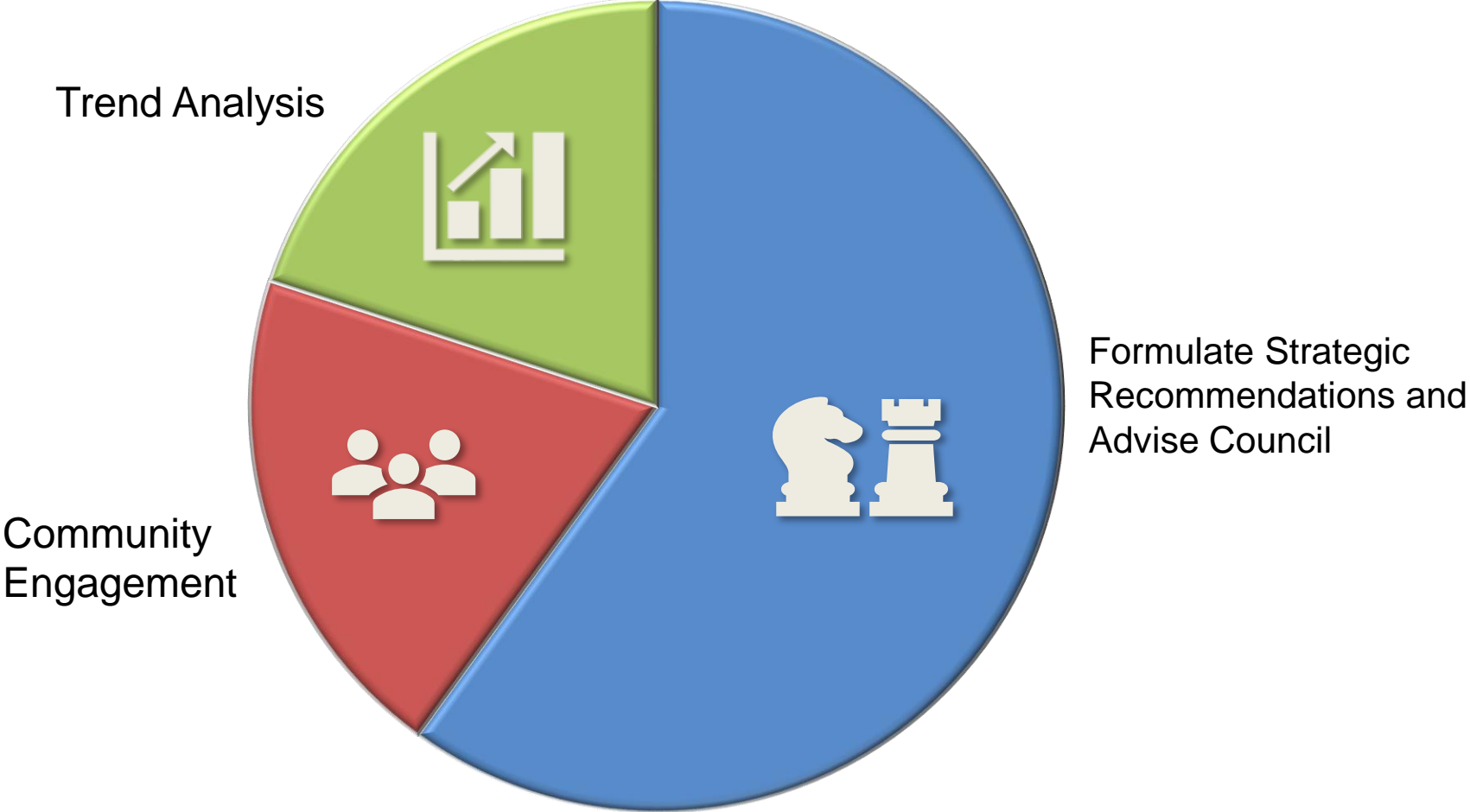


Cultural Commission

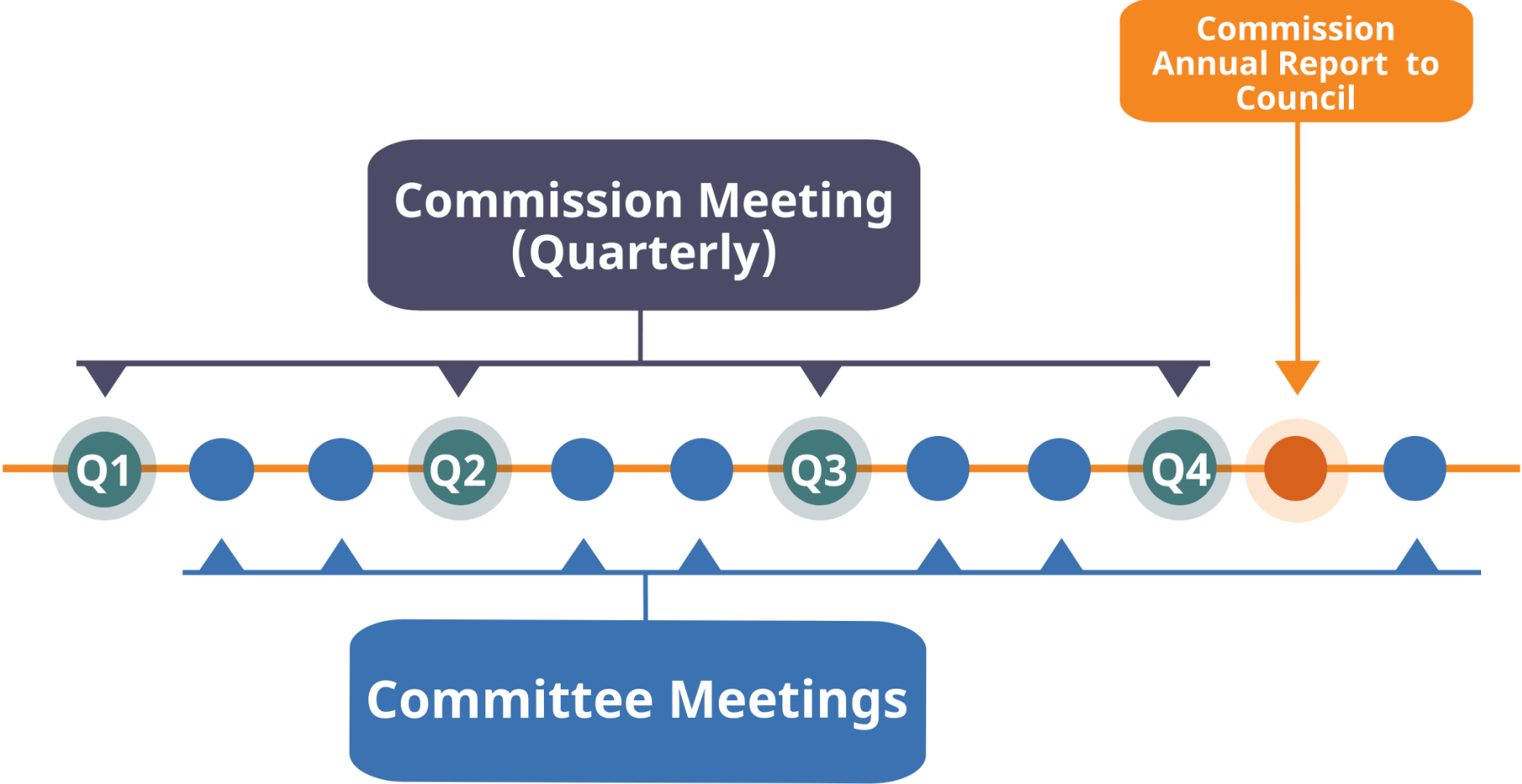
Supports Strategic Plan Critical Success Factors

- Cultural and Recreational Facilities and Amenities
- Community Engagement
- Community Health & Well-Being
- Collaborative Relations with Education Partners

Estimated Time Allocation



Sample Timeline



Why We're Doing This...

- **Strategic alignment.** Ensure the work that our work is aligned with the strategic and comprehensive plans.
- **Financial stewardship.** Improve staff and budgetary efficiencies.
- **Improved service.** Provide better resources to support broader council goals utilizing citizen expertise.
- **Empower our citizens.** Create opportunities that foster strong community engagement and participation.

Questions?