

EXHIBIT A

DESCRIPTION:

A 40 foot wide tract of land being part of Southwest Longview Boulevard right-of-way as platted in "NEW LONGVIEW ROADWAY PLAT, TRACTS J THROUGH U", a subdivision in the said City of Lee's Summit, as recorded in Jackson County Recorder of Deeds as Instrument Number 2005I0061432, lying adjacent to and parallel with the East line of the "MINOR PLAT OF TOWER PARK LOTS 7A AND 7B", a subdivision in the City of Lee's Summit, Jackson County, Missouri, as recorded in Jackson County Recorder of Deeds as Instrument Number 2021E47726 and being more particularly described as follows.

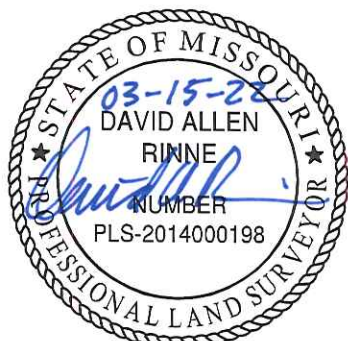
Beginning at the Northwest corner of said Southwest Longview Boulevard right-of-way of said "NEW LONGVIEW ROADWAY PLAT, TRACTS J THROUGH U";

thence along the North line of said "NEW LONGVIEW ROADWAY PLAT, TRACTS J THROUGH U", North 58 degrees 46 minutes 33 seconds East, a distance of 40.00 feet;

thence along a line 40.00 East of and parallel with East line of said "MINOR PLAT OF TOWER PARK LOTS 7A AND 7B" and the West line of said Southwest Longview Boulevard right-of-way, South 31 degrees 13 minutes 27 seconds East, a distance of 252.81 feet;

thence South 58 degrees 46 minutes 33 seconds West, a distance of 40.00 feet to the Southeast corner of said "MINOR PLAT OF TOWER PARK LOTS 7A AND 7B";

thence along the East line of said "MINOR PLAT OF TOWER PARK LOTS 7A AND 7B" and the West line of said Southwest Longview Boulevard right-of-way, North 31 degrees 13 minutes 27 seconds West, a distance of 252.81 feet to the Point of Beginning, and containing 10112.40 square feet or 0.2321 acres, more or less.



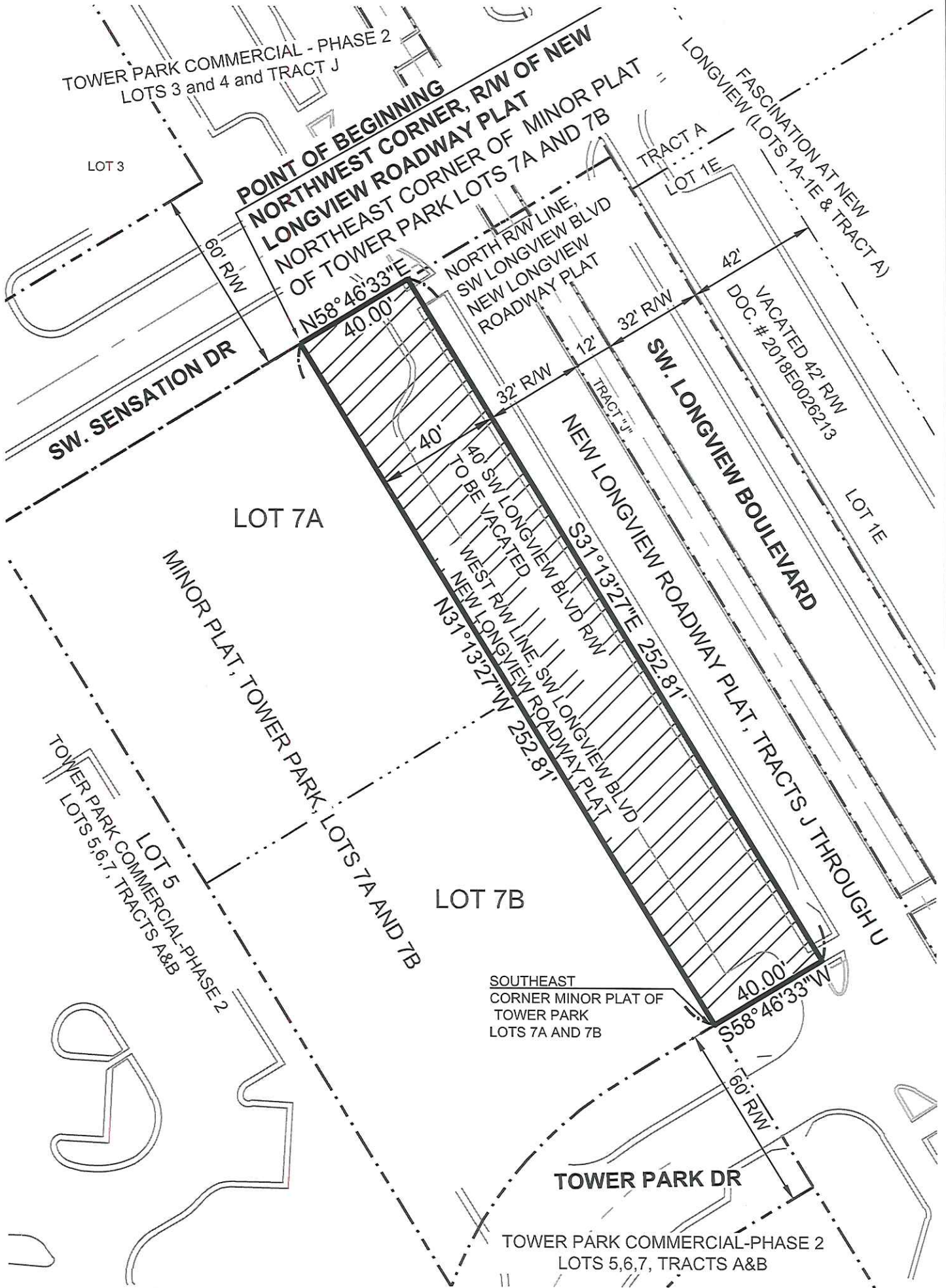
David Allen Rinne, P.L.S.
MO# PLS-2014000198

DRAWN BY:	JWT
CHECKED BY:	SCH
DATE:	3-14-2022
PROJECT NO:	20-106
SCALE:	
SHEET	1 of 2

	SCHLAGEL
	ENGINEERS PLANNERS SURVEYORS LANDSCAPE ARCHITECTS 14920 West 107th Street • Lenexa, Kansas 66215 www.schlagelassociates.com • (913) 492-5158 • Fax: (913) 492-8400 Missouri State Certificates of Authority #E2002003800-F #LAC2001005237 #LS2002008859-F
RIGHT-OF-WAY VACATE	

I:\PROJECTS\2020\20-106\2.0 Survey\1.0 Esmts-Legals\20-106 ROW VACATE.dwg, 3/14/2022 2:36:29 PM

EXHIBIT A



DRAWN BY:	JWT
CHECKED BY:	SCH
DATE:	3-14-2022
PROJECT NO:	20-106
SCALE:	1" = 40'
SHEET	2 of 2

SCHLAGEL
 ENGINEERS PLANNERS SURVEYORS LANDSCAPE ARCHITECTS
 14920 West 107th Street • Lenexa, Kansas 66215
 www.schlagelassociates.com • (913) 492-5158 • Fax: (913) 492-8400
 Missouri State Certificates of Authority
 #E2002003800-F #LAC2001005237 #LS2002008859-F
RIGHT-OF-WAY VACATE

I:\PROJECTS\2020\20-106\2.0 Survey\1.0 Esmts-Legals\20-106 ROW VACATE.dwg, 3/14/2022 2:44:14 PM