

September 15, 2017

LEGAL DESCRIPTION  
MONUMENT EASEMENT

LOT 1, SUMMIT VIEW FARMS AMENDED FIRST PLAT  
CITY OF LEE'S SUMMIT, JACKSON COUNTY, MISSOURI

All that part of the Lot 1, SUMMIT VIEW FARMS AMENDED FIRST PLAT, a subdivision in the City of Lee's Summit, Jackson County, Missouri, more particularly described as follows:

Beginning at the Northeast corner of said Lot 1; thence S 1° 53' 52" W, along the East line of said Lot 1, a distance of 35.00 feet; thence N 88° 06' 12" W, a distance of 80.77 feet; thence S 46° 53' 36" W, a distance of 9.91 feet; thence S 2° 15' 36" W, a distance of 20.00 feet; thence N 87° 34' 01" W, a distance of 42.50 feet, to a point on the West line of said Lot 1; thence Northerly along said West line, being a curve to the left having an initial tangent bearing of N 2° 25' 59" E, a radius of 825.00 feet, a central angle of 0° 32' 23", an arc distance of 7.77 feet, to a point of tangency; thence N 1° 53' 36" E, along said West line, a distance of 23.84 feet, to the Northwest corner of said Lot 1; thence S 88° 06' 12" E, along the North line of said Lot 1, a distance of 30.00 feet; thence N 46° 53' 36" E, along said North line, a distance of 42.42 feet; thence S 88° 06' 12" E, along said North line, a distance of 70.37 feet, to the point of beginning.

The above described tract of land contains 4,378 square feet, or 0.101 acres, more or less.

RECEIVED

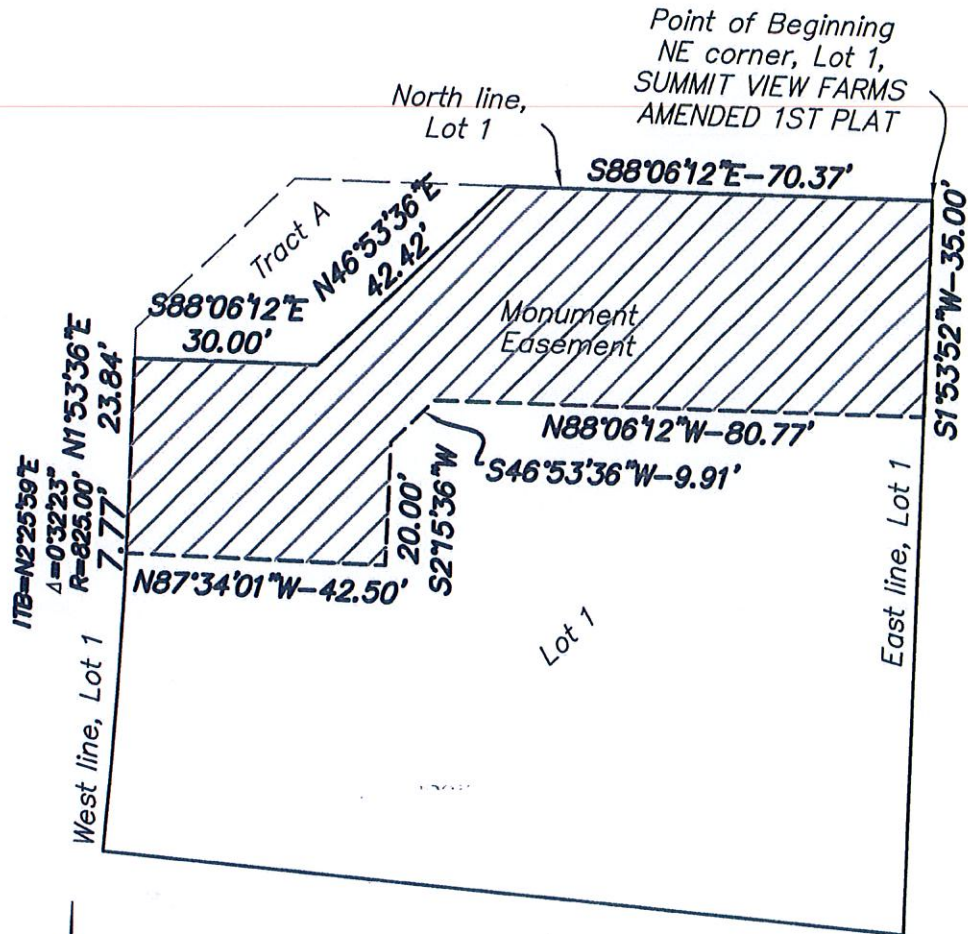
SEP 18 2017

City of Lee's Summit  
Development Center



SHAFFER, KLINE & WARREN, INC.  
11250 Corporate Avenue  
Lenexa, Kansas 66219  
Phone: (913) 888-7800  
Fax: (913) 888-7868

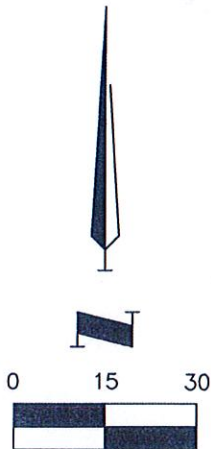
# EXHIBIT



RECEIVED

SEP 18 2017

City of Lee's Summit  
Development Center



## SHAFER, KLINE & WARREN

11250 Corporate Avenue  
Lenexa, KS 66219-1392  
913.888.7800 FAX: 913.888.7868



SURVEYING | ENGINEERING | CONSTRUCTION

PROJECT NO.170598-010 DATE:9/15/17 BY:RCS