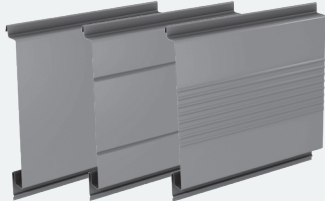


IW SERIES WALL SYSTEM

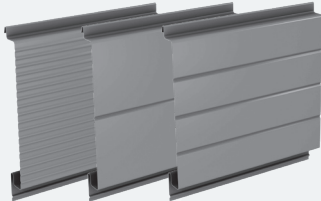
Concealed Fastener Panel

IW-10A, IW-11A, IW-12A, IW-13A, IW-14A, IW-15A

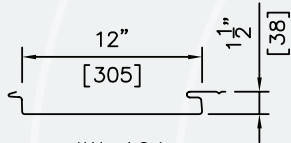
TECHNICAL DATA SHEET



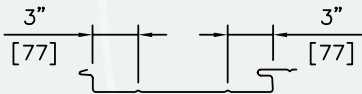
IW-10A IW-11A IW-12A



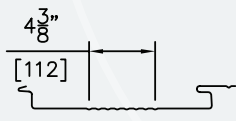
IW-13A IW-14A IW-15A



IW-10A



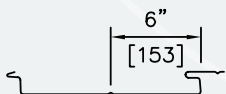
IW-11A



IW-12A



IW-13A



IW-14A



IW-15A

DESCRIPTION

IW-10A Series offers six interesting configurations: IW-10A, IW-11A, IW-12A, IW-13A, IW-14A and IW-15A. All IW panels share a common lock-joint design which makes them interchangeable on a project. The lock also permits the placement of concealed fasteners, and minimizes moisture intrusion. All IW Series wall panels can be installed in a variety of rainscreen applications to form a complete wall system. Systems may vary from an uninsulated screen wall to MetalWrap™ Series, an insulated composite backup panel system with Advanced Thermal and Moisture Protection (ATMP®).

GENERAL DESIGN OPTIONS

| IW-10A SERIES | | |
|------------------|---|---|
| PANEL THICKNESS | 1½" [38mm] | |
| PANEL COVERAGE | 12" [305mm] | |
| SIDE LAP | Interlocking | |
| END LAPS | Galvanized¹ (G90) (see standard detail) Shop notched and swaged for vertical applications only 2" [51mm] for 22 [0.76mm] and 20 [0.91mm] gages only ^{4,5,6,8} Rivets may be required for proper alignment. Flash or extrusion for all gages ⁹ | Aluminum¹ (3003-H14) (see standard detail) Shop notched and swaged for vertical applications only 2" [51mm] for 0.040" [1.02mm] only ^{4,5,6,8} Flash or extrusion for all other thicknesses ⁶ |
| | GAGES (STANDARD) | 20 [0.91mm], 22 [0.76mm] |
| GAGES (OPTIONAL) | 18 [1.19mm] ^{3,5,7} | 0.050" [1.27mm] ⁵ |
| STANDARD LENGTH | 5 [1.524m] - 25 ft. [7.62m] | 5 [1.524m] - 20 ft. [6.096m] |
| STANDARD TEXTURE | Embossed ^{2,10} (20 [0.91mm] - 22 [0.76mm] gage only) | Embossed ^{2,9} |
| OPTIONAL TEXTURE | Smooth | Smooth |
| FINISHES | See CENTRIA Color Chart | See CENTRIA Color Chart |



- Alternate base material, panel lengths and gages may also be available. Contact CENTRIA.
- Embossing is non-directional.
- IW-12A and IW-13A are not available in 18 gage.
- Shop swaged ends are not available for IW-12A, IW-14A, IW-15A.
- Shop swaged ends are not available for 18 gage steel, 0.050" aluminum.
- MicroLine Extrusions can be used with horizontally installed panels only.
- 18 gage cannot be embossed.
- Swaged for vertical application only
- 0.050" Embossed (optional gauge) is best effort ONLY
- Not available in 18 ga.
- All IW panels are erected from top to bottom when erected in a horizontal application

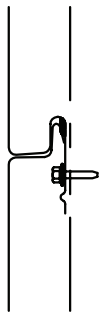
IW-10A-15A DESIGN FEATURES & BENEFITS

- Concealed fastener design minimizes exposed fasteners
- Common lock-joint design makes all IW series panels interchangeable on a project & minimizes moisture intrusion
- Can be installed vertically or horizontally
- Excellent for new construction and retrofit projects
- Cost-effective, all-weather installation capability shortens installation time; permits fast-track scheduling
- Panels are available with embossed or smooth finishes

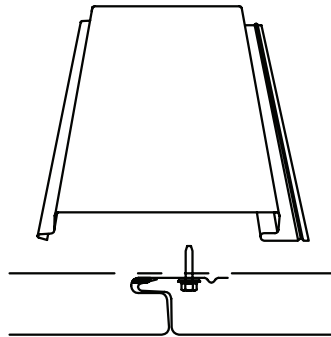


IW-10A-15A TESTING

| TEST | CHARACTERISTIC | TEST METHOD | TEST TITLE | RESULTS |
|--|-------------------|---|--|--|
|  ENVIRONMENTAL | AIR LEAKAGE | IW products are intended to be used only as rainscreens; an appropriate air & moisture barrier must be installed behind the product to comply with code requirements. | | |
| | WATER PENETRATION | | | |
|  STRUCTURAL | IMPACT RESISTANCE | Approved for non-HVHZ only; see FL3174. | | |
| | WIND LOADS | ASTM E72 | Determines structural performance under uniform static air pressure difference | See load-span tables for allowable spans/loads under positive or negative loading. |



HORIZONTAL
JOINT DETAIL



VERTICAL
JOINT DETAIL

NOTES

- For information on special applications, contact your local CENTRIA Sales Representative.
- All IW panels may be used on walls & soffits but not on roofs.
- Panel length tolerance is $\pm 1/4"$ [6mm].
- For protective coatings - see CENTRIA color chart.
- Oil canning within mill tolerances will not be cause for rejection.
- Panels must be ordered as "horizontal" when used in a horizontal application.
- Horizontal Panels must be erected from top to bottom.