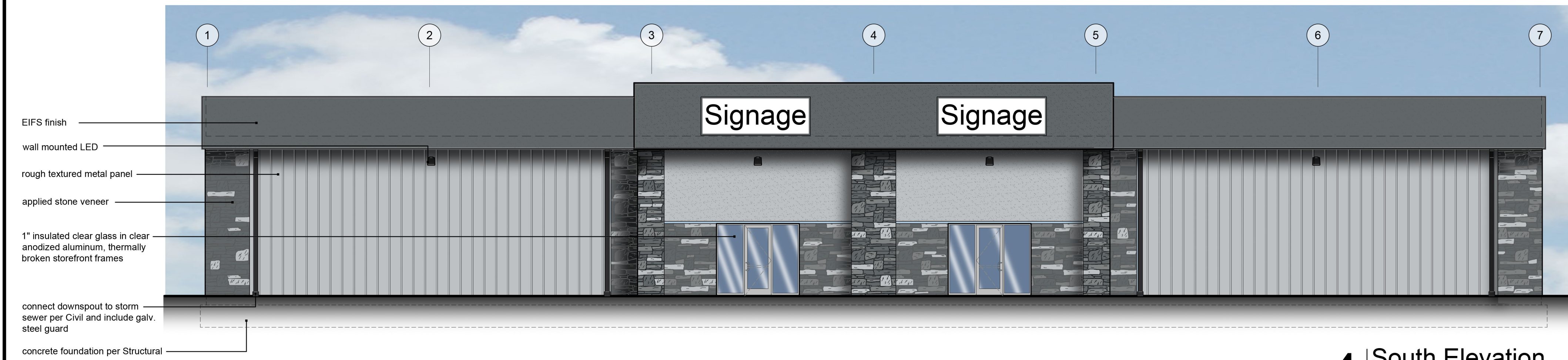




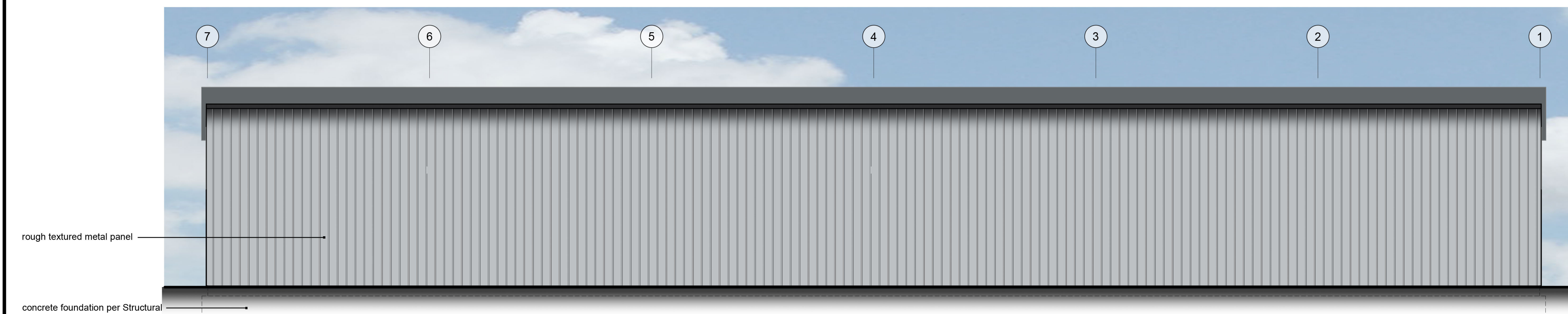
2 East Elevation
scale: 1/16" = 1'-0"



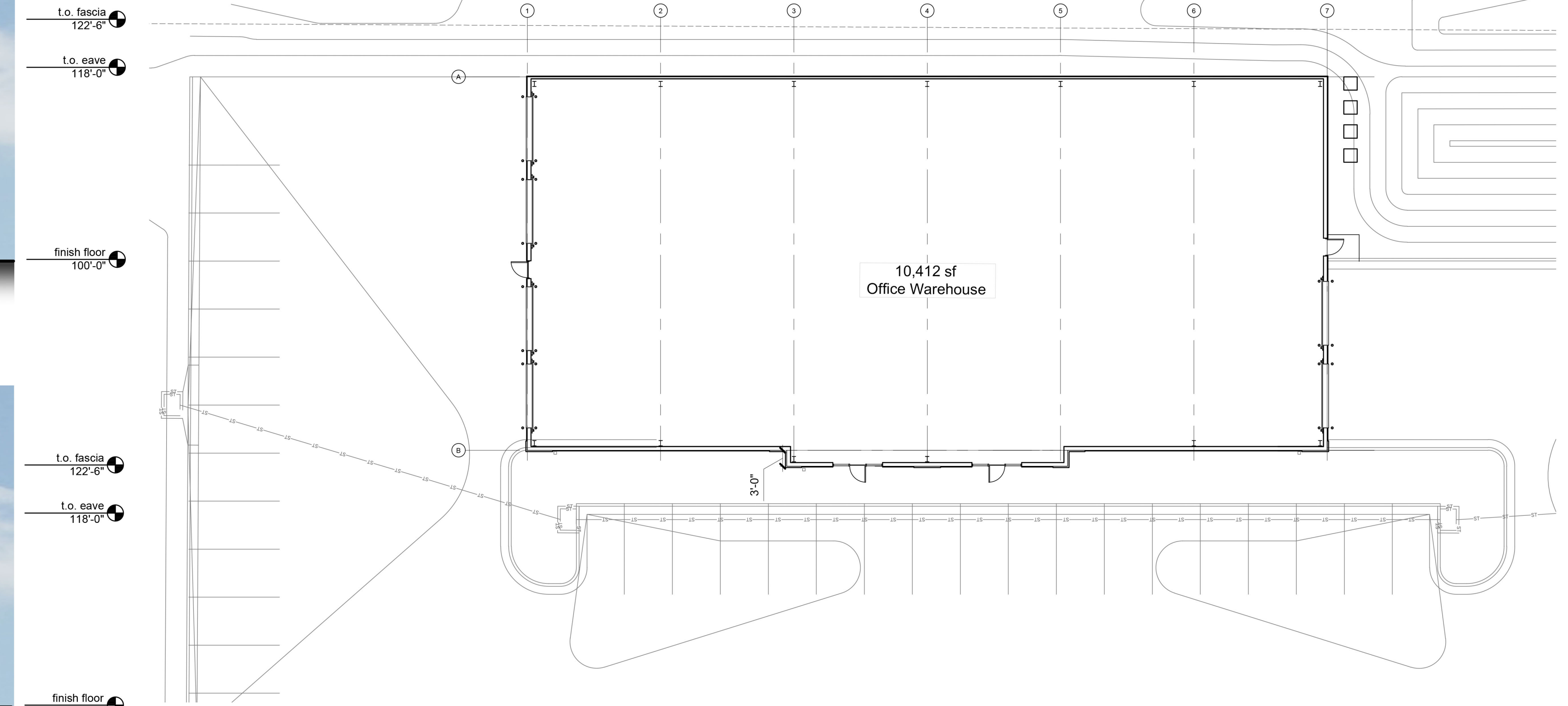
3 West Elevation
scale: 1/16" = 1'-0"



4 South Elevation
scale: 1/8" = 1'-0"



5 North Elevation
scale: 1/8" = 1'-0"



1 Key Plan
scale: 1/16" = 1'-0" north

secondary facade - east

material	area	% area
clear glass in alum. frame	0 sf	0%
overhead metal doors	360 sf	25%
metal doors	24 sf	2%
rough-textured metal panel	1,082 sf	75%
total wall area:	1,446 sf	100%

secondary facade - west

material	area	% area
clear glass in alum. frame	0 sf	0%
overhead metal doors	680 sf	47%
metal doors	24 sf	2%
rough-textured metal panel	743 sf	51%
total wall area:	1,446 sf	100%

primary facade - south

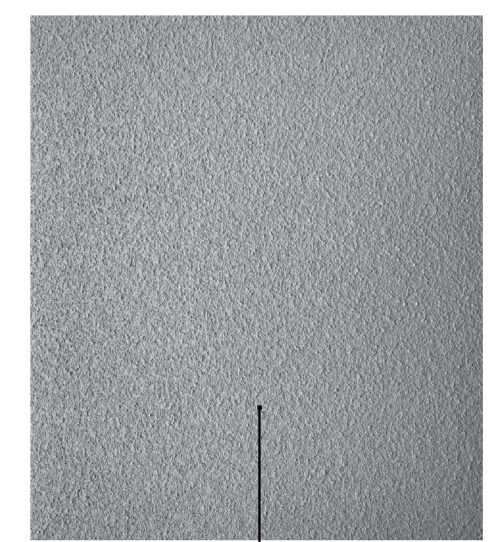
material	area	% area
clear glass in alum. frame	192 sf	5%
overhead metal doors	0 sf	0%
metal doors	0 sf	0%
EIFS finish	1,341 sf	38%
applied stone veneer	638 sf	19%
rough-textured metal panel	1,341 sf	38%
total wall area:	3,472 sf	100%
UDO Section 8.170 A required materials:	2,131 sf	62%

secondary facade - north

material	area	% area
clear glass in alum. frame	0 sf	0%
overhead metal doors	0 sf	0%
metal doors	0 sf	0%
rough-textured metal panel	2,385 sf	100%
total wall area:	2,385 sf	100%

exterior materials and finishes:

- exterior paint:
P-1 "Lazy Gray"
P-2 "Web Gray"
P-3 "Charcoal Gray"
- glass:
GL-1 1" insulated clear glass with low-E coating and argon fill
*use SOLARBAN 60 as basis
- flashing, coping, gutters and downspouts:
F-1 prefinished 24 ga., paint: P-3
- EIFS finish
E-1 medium texture finish, paint color: P-1 and P-2
- rough-textured metal panel:
MP-1 prefinished, color: P-1 and P-2
- metal roof panel:
MR-1 prefinished standing seam metal, color: Charcoal
- hollow metal doors and frames:
paint color: P-1
- overhead doors:
insulated metal, color: White (prefinished)
Stucco embossed with micro groove



Custom Panel Systems, CecoRok wall panel, Varco Pruden Texture Clad wall panel or equal. Rough textured Stucco finish flat metal wall panel, 16" wide, concealed fasteners

an expansion for
Pollard Flex
950 NE Pollard St
Lee's Summit, MO 64086

date
05.24.2022
drawn by
DAE
checked by
DAE
revisions

sheet number
A2.1
drawing type
PDP
project number
22097