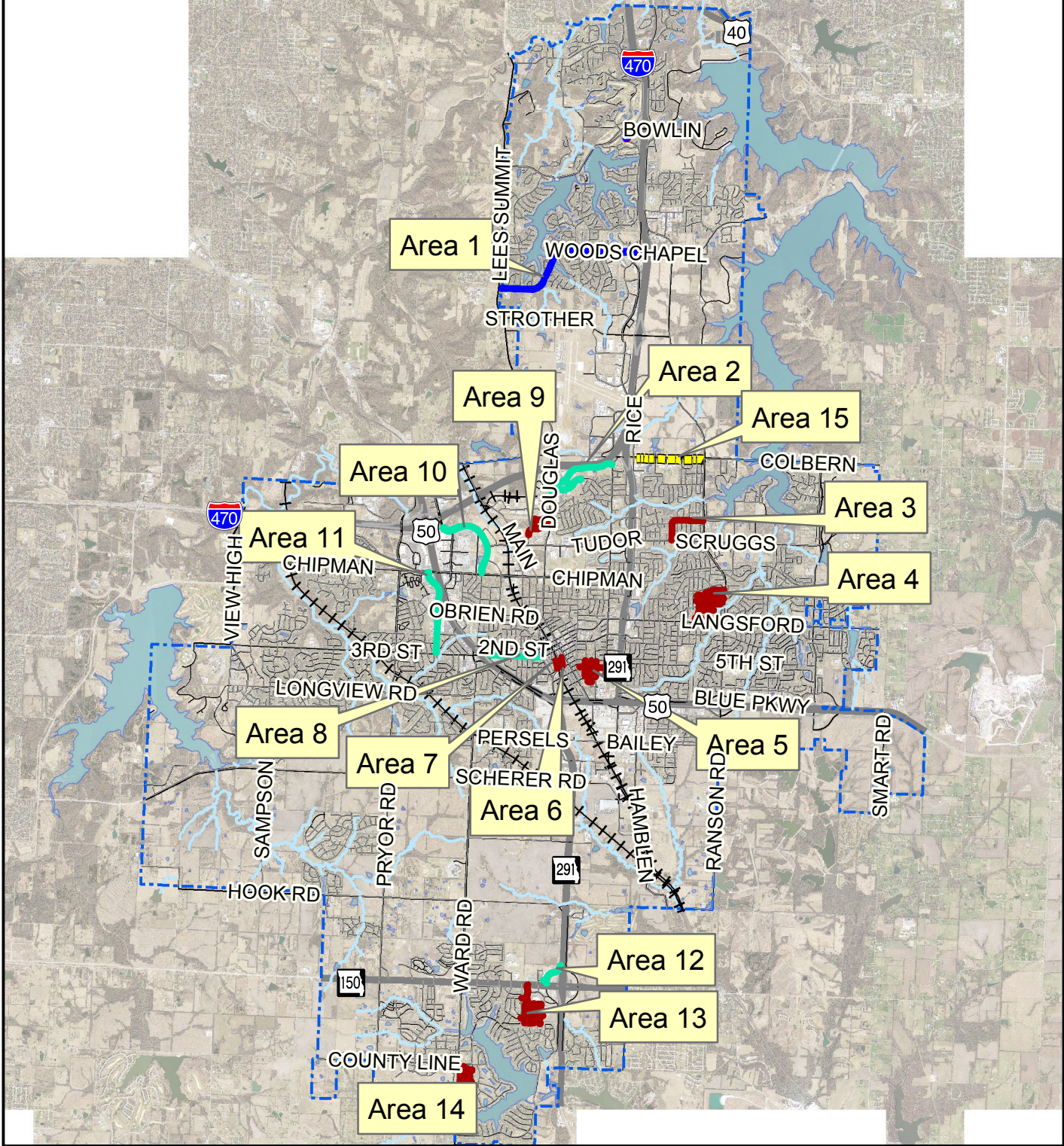


City of Lee's Summit Mill & Overlay 18/19 - Proj. No.324-18/19 (overlay)



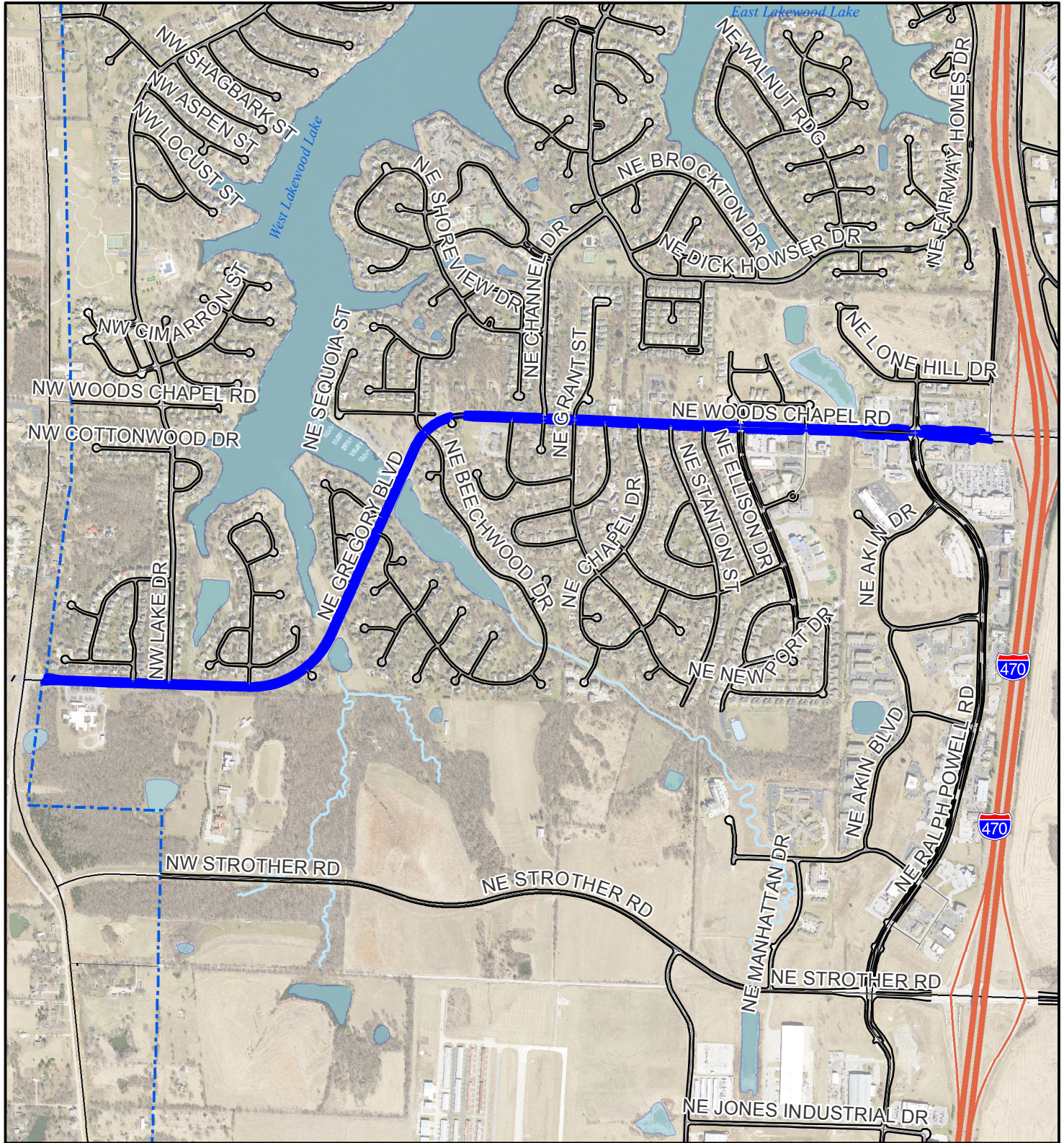
Overview

Legend



- Mill & Overlay - Mill & Fill RC 5-01 (PG 70-22)
- Mill & Overlay - Mill & Fill RC 5-01
- Mill & Overlay RC 5-01
- ▣▣▣▣ Multi-Use Trail

City of Lee's Summit Mill & Overlay 18/19 - Proj. No.324-18/19 (overlay)



Area 1 -
Woods Chapel

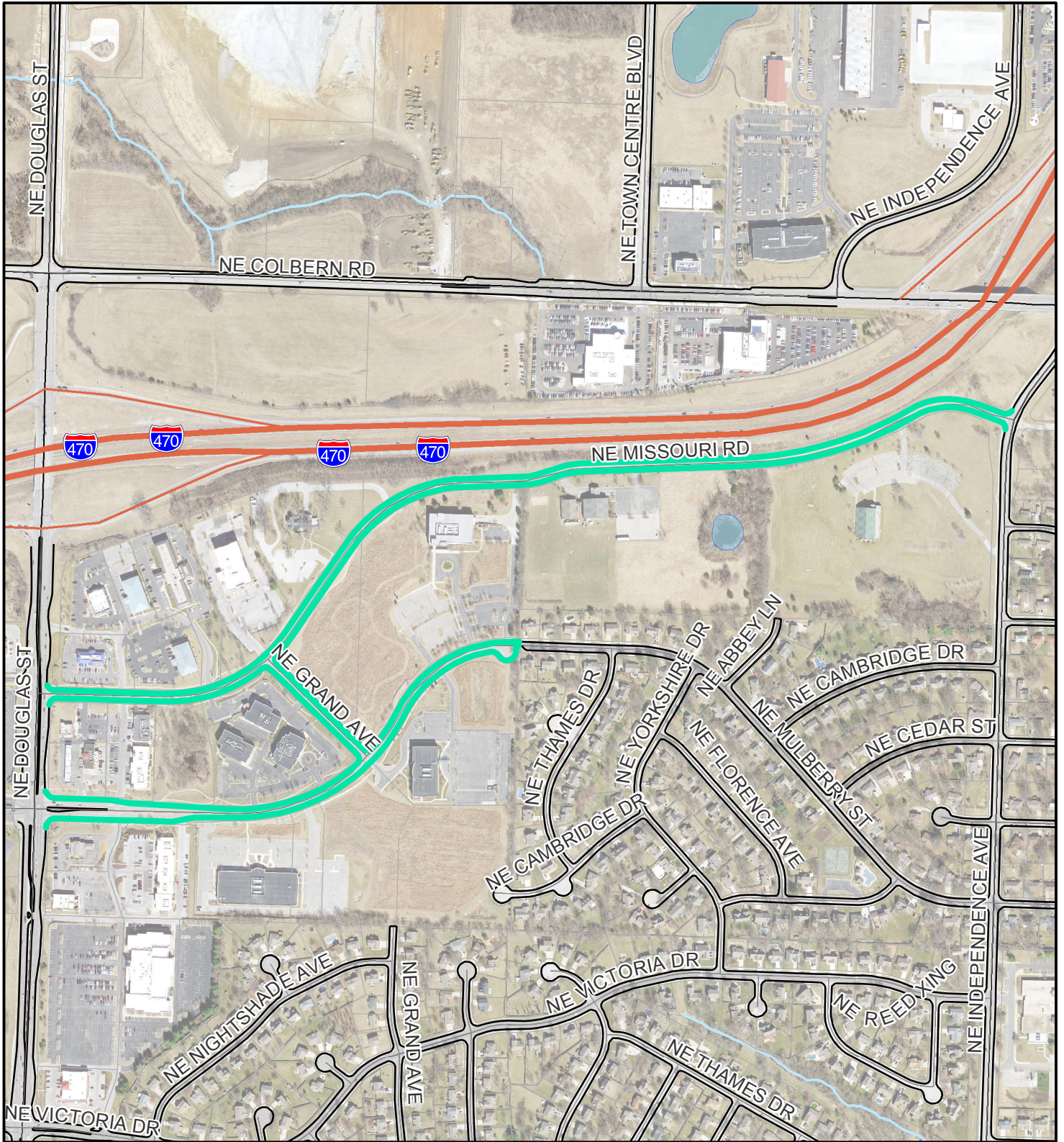


Legend

- Mill & Overlay - Mill & Fill RC 5-01 (PG 70-22)
- Mill & Overlay - Mill & Fill RC 5-01
- Mill & Overlay RC 5-01
- - - Mult-Use Trail

City of Lee's Summit

Mill & Overlay 18/19 - Proj. No.324-18/19 (overlay)



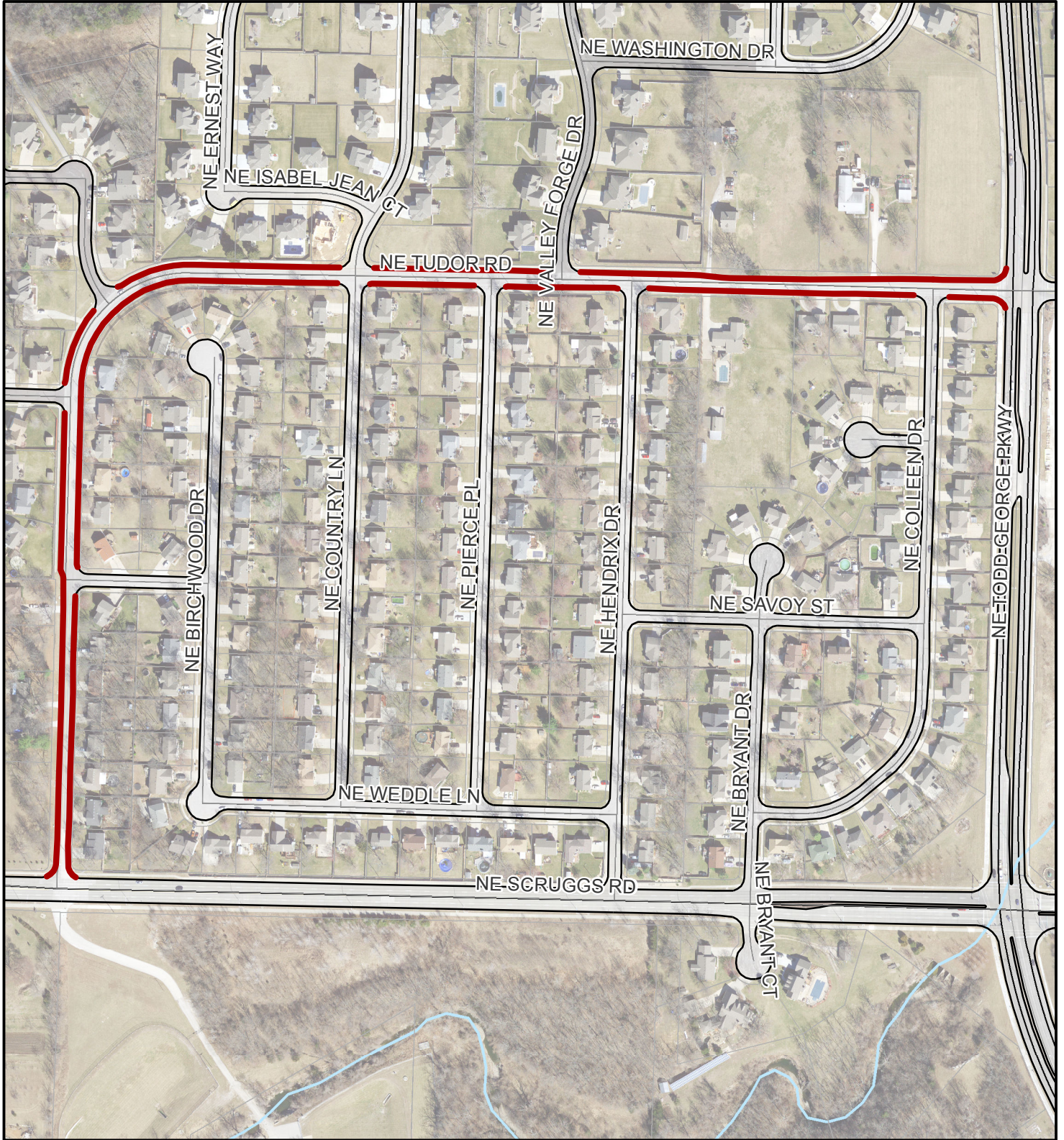
Area 2 -
Missouri Road



Legend

- Mill & Overlay - Mill & Fill RC 5-01 (PG 70-22)
- Mill & Overlay - Mill & Fill RC 5-01
- Mill & Overlay RC 5-01
- - - Mult-Use Trail

City of Lee's Summit Mill & Overlay 18/19 - Proj. No.324-18/19 (overlay)



Area 3 -
Tudor Road

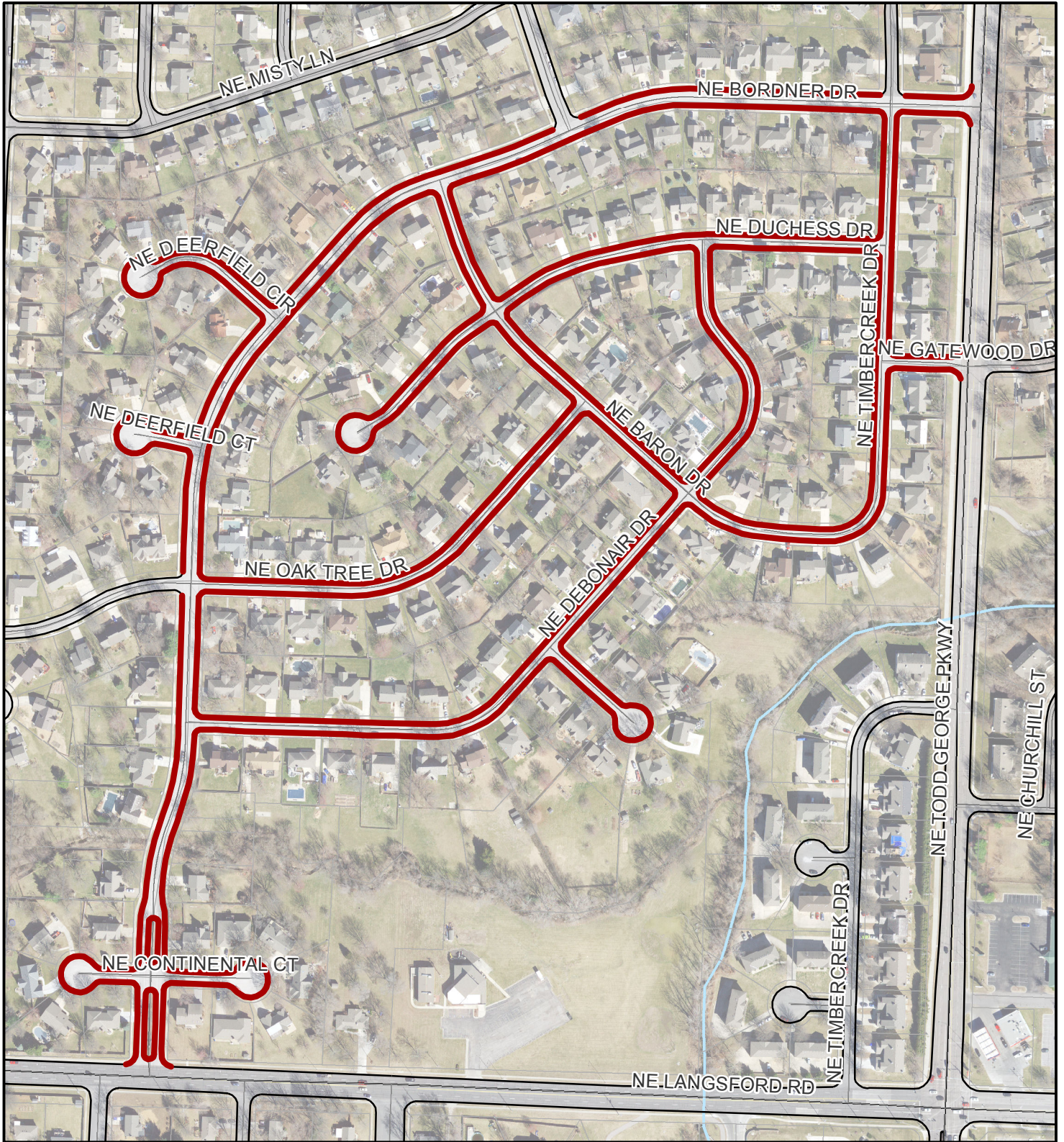
Legend



-  Mill & Overlay - Mill & Fill RC 5-01 (PG 70-22)
-  Mill & Overlay - Mill & Fill RC 5-01
-  Mill & Overlay RC 5-01
-  Multi-Use Trail

City of Lee's Summit

Mill & Overlay 18/19 - Proj. No.324-18/19 (overlay)



Area 4 -
Bordner

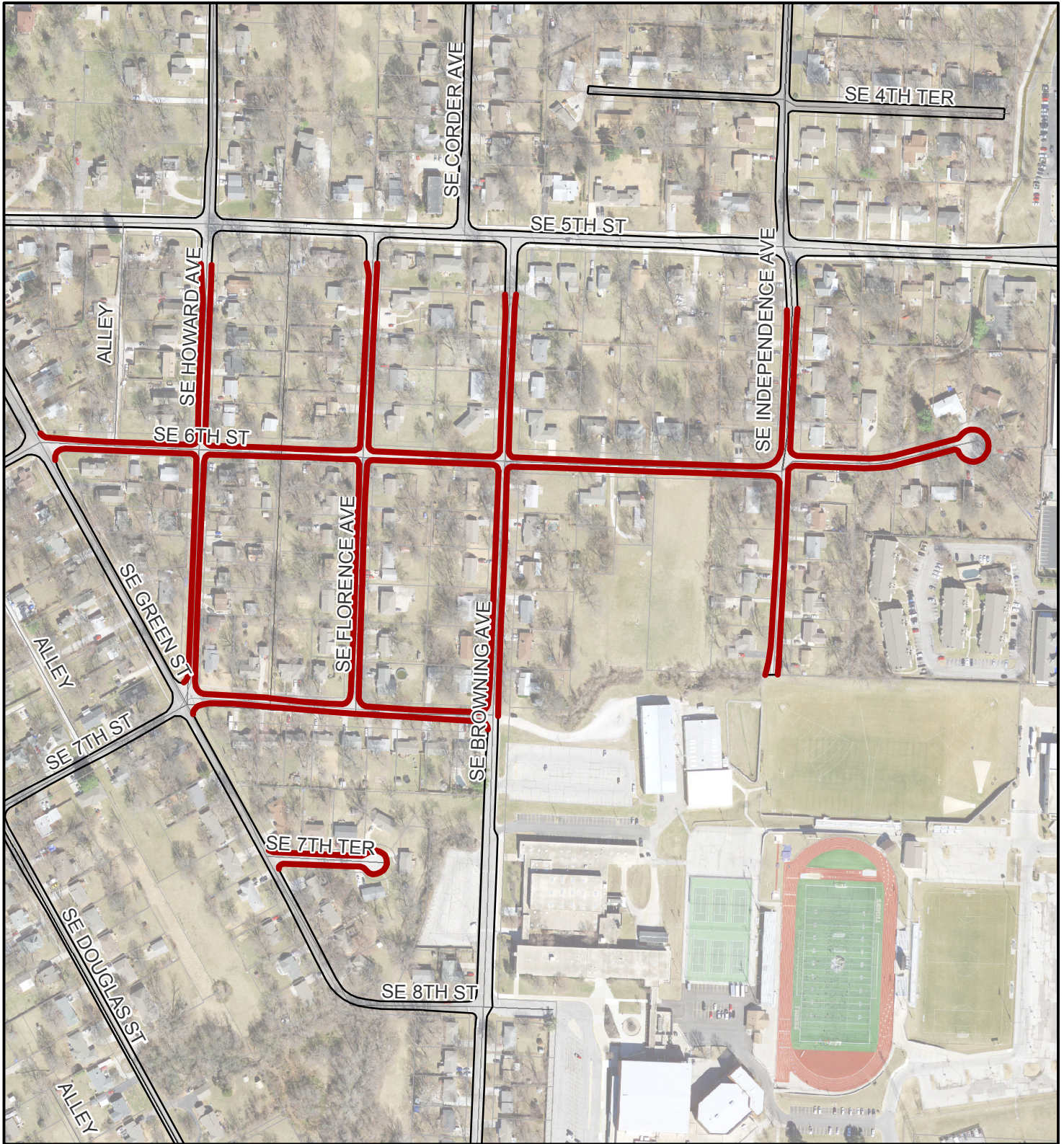


Legend

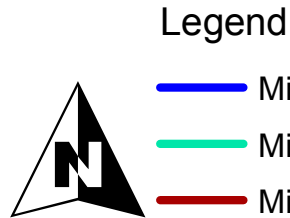
- Mill & Overlay - Mill & Fill RC 5-01 (PG 70-22)
- Mill & Overlay - Mill & Fill RC 5-01
- Mill & Overlay RC 5-01
- ▬▬▬▬ Multi-Use Trail

City of Lee's Summit

Mill & Overlay 18/19 - Proj. No.324-18/19 (overlay)

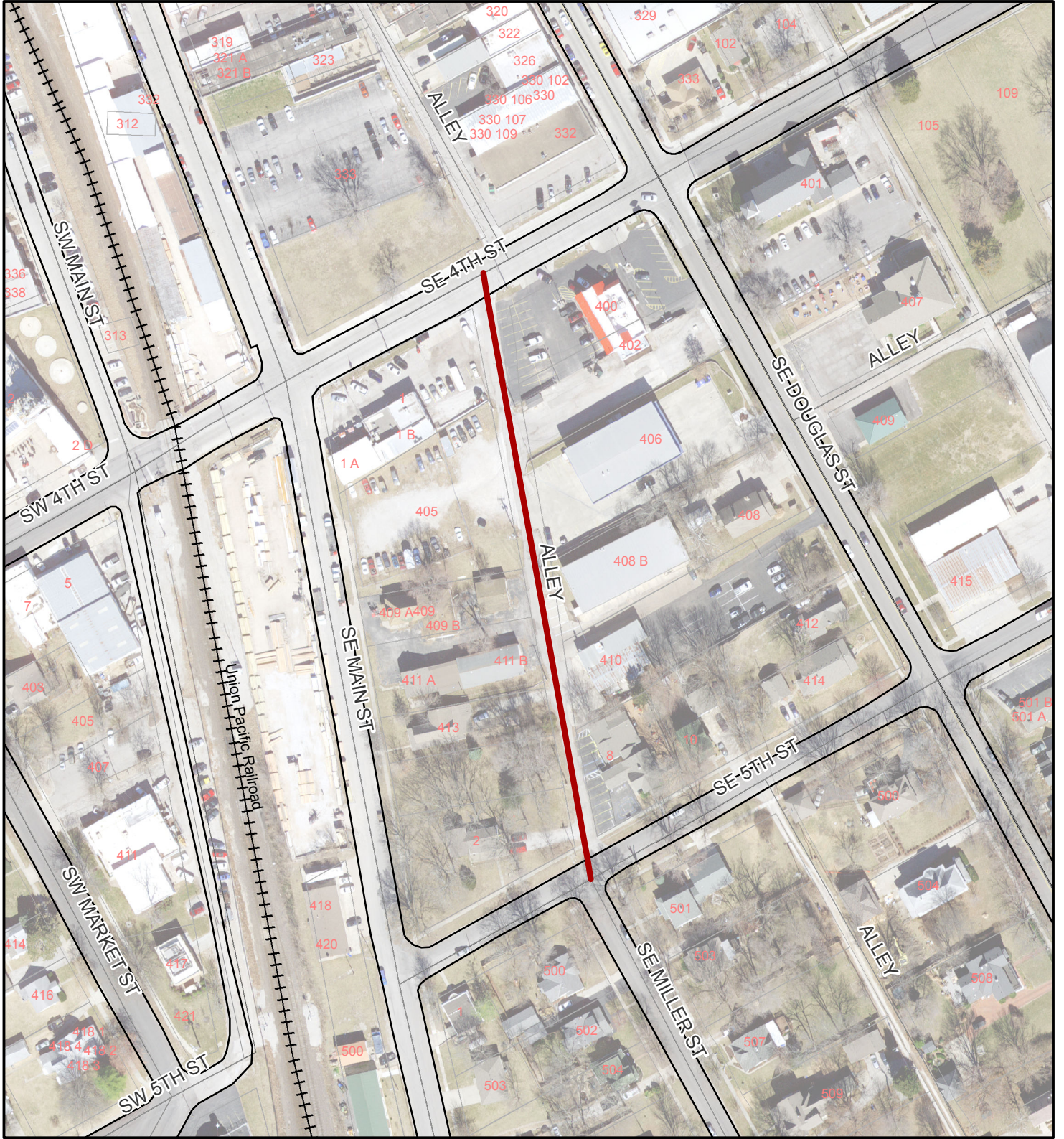


Area 5 -
6th ST & Green ST



- Legend**
- Mill & Overlay - Mill & Fill RC 5-01 (PG 70-22)
 - Mill & Overlay - Mill & Fill RC 5-01
 - Mill & Overlay RC 5-01
 - - - Mult-Use Trail

City of Lee's Summit Mill & Overlay 18/19 - Proj. No.324-18/19 (overlay)



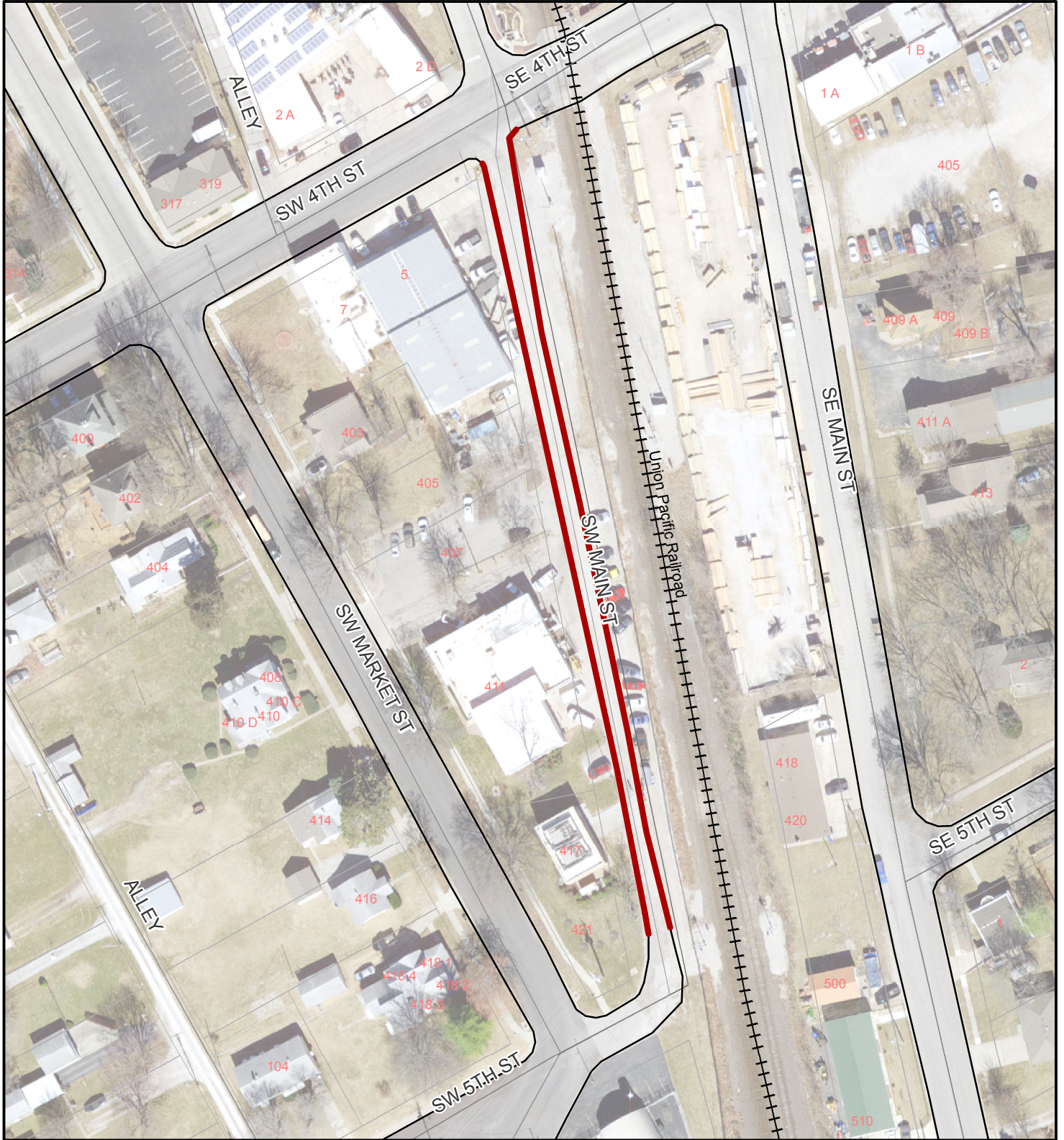
Area 6 -
Alley

Legend



- Mill & Overlay - Mill & Fill RC 5-01 (PG 70-22)
- Mill & Overlay - Mill & Fill RC 5-01
- Mill & Overlay RC 5-01
- ▣▣▣▣ Mult-Use Trail

City of Lee's Summit Mill & Overlay 18/19 - Proj. No.324-18/19 (overlay)



Area 7 -
Main Street

Legend



- Mill & Overlay - Mill & Fill RC 5-01 (PG 70-22)
- Mill & Overlay - Mill & Fill RC 5-01
- Mill & Overlay RC 5-01
- Mult-Use Trail

City of Lee's Summit

Mill & Overlay 18/19 - Proj. No.324-18/19 (overlay)



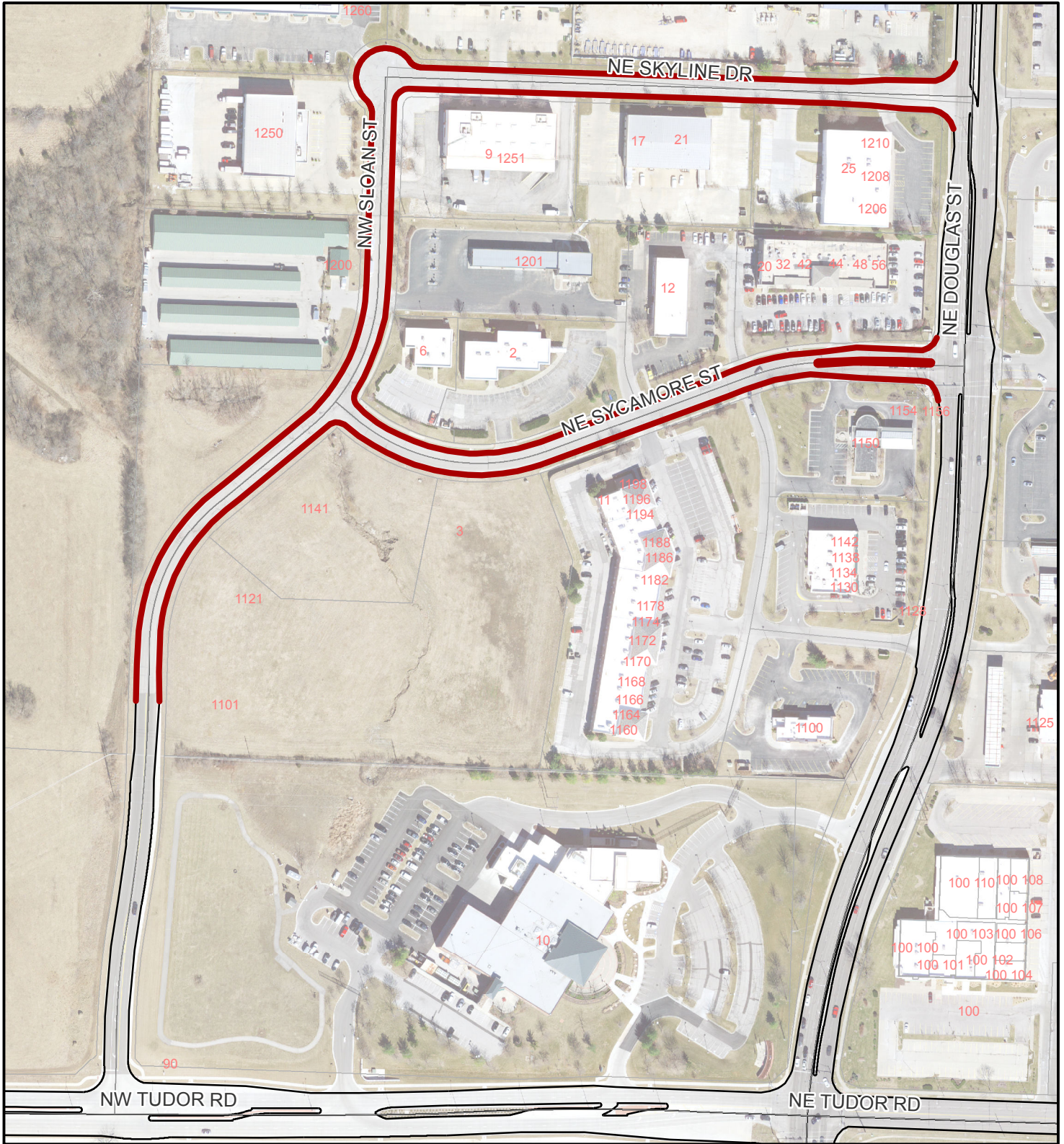
Area 8 -
3rd Street

Legend



- Mill & Overlay - Mill & Fill RC 5-01 (PG 70-22)
- Mill & Overlay - Mill & Fill RC 5-01
- Mill & Overlay RC 5-01
- - - - Multi-Use Trail

City of Lee's Summit Mill & Overlay 18/19 - Proj. No.324-18/19 (overlay)



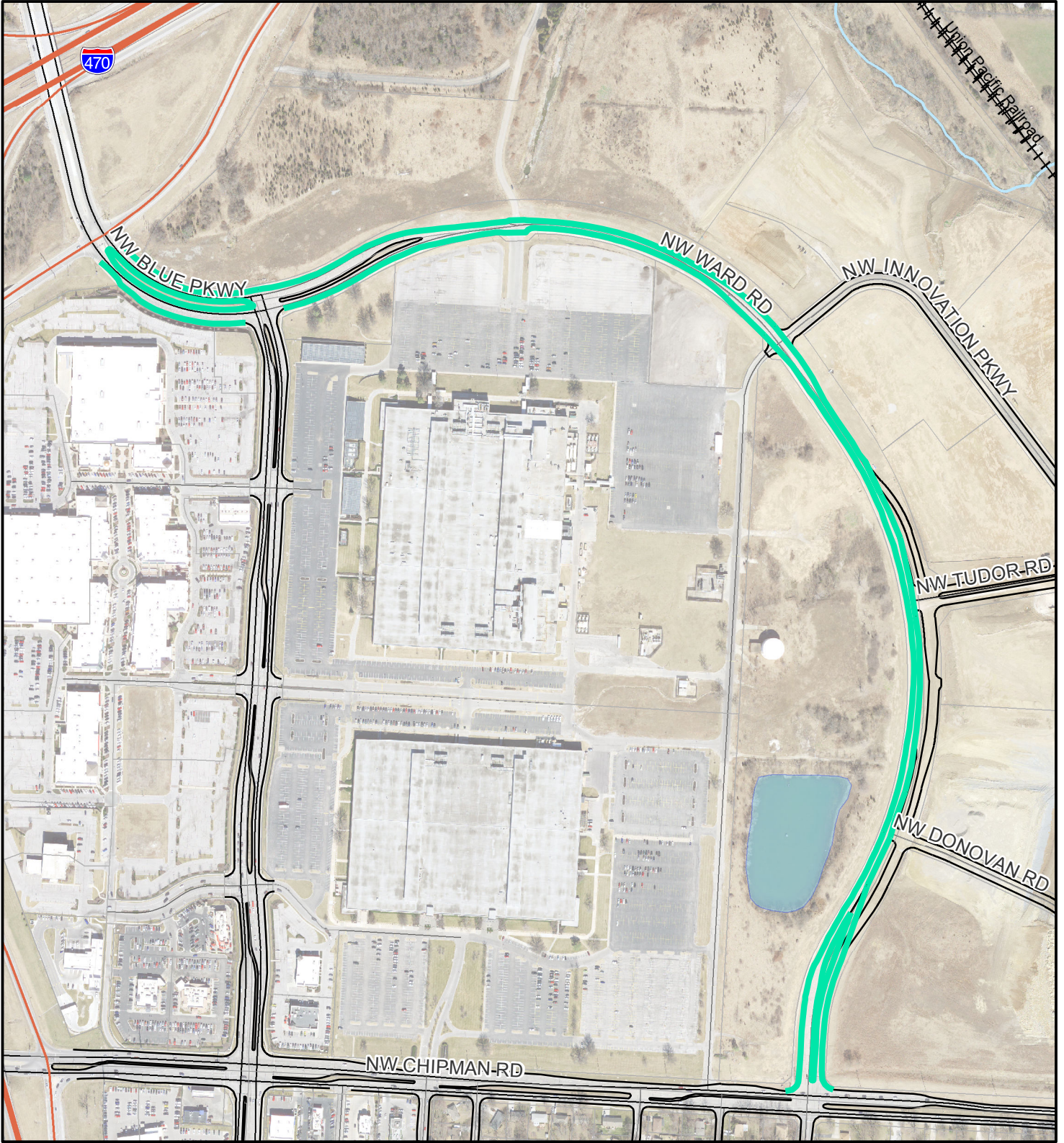
Area 9 -
Sycamore Street

Legend



- Mill & Overlay - Mill & Fill RC 5-01 (PG 70-22)
- Mill & Overlay - Mill & Fill RC 5-01
- Mill & Overlay RC 5-01
- ■ ■ ■ ■ Multi-Use Trail

City of Lee's Summit Mill & Overlay 18/19 - Proj. No.324-18/19 (overlay)



Area 10 -
Ward Road

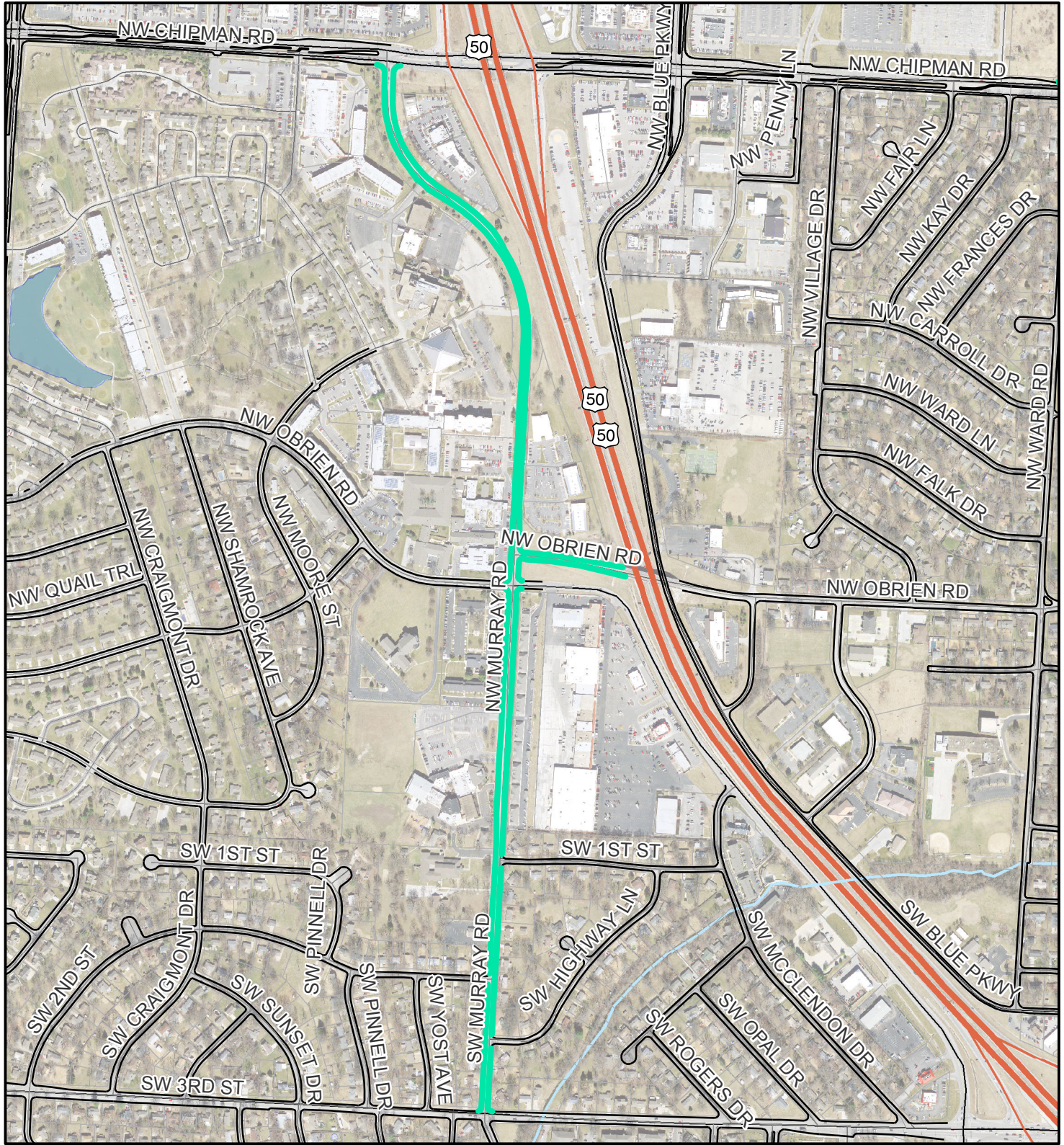
Legend



-  Mill & Overlay - Mill & Fill RC 5-01 (PG 70-22)
-  Mill & Overlay - Mill & Fill RC 5-01
-  Mill & Overlay RC 5-01
-  Multi-Use Trail

City of Lee's Summit

Mill & Overlay 18/19 - Proj. No.324-18/19 (overlay)

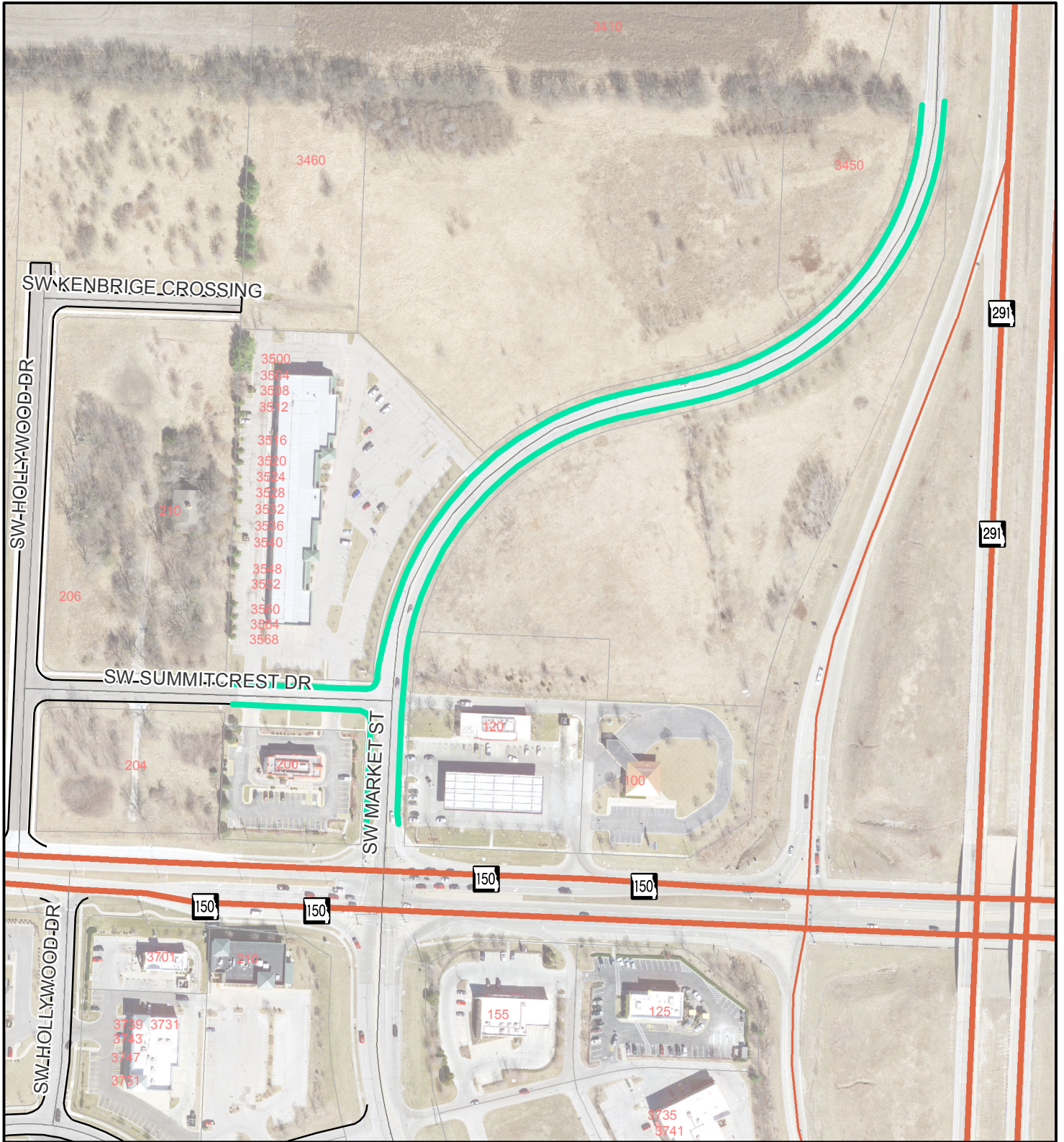


Area 11 -
Murray Road



- Legend**
- Mill & Overlay - Mill & Fill RC 5-01 (PG 70-22)
 - Mill & Overlay - Mill & Fill RC 5-01
 - Mill & Overlay RC 5-01
 - ■ ■ ■ Multi-Use Trail

City of Lee's Summit Mill & Overlay 18/19 - Proj. No.324-18/19 (overlay)



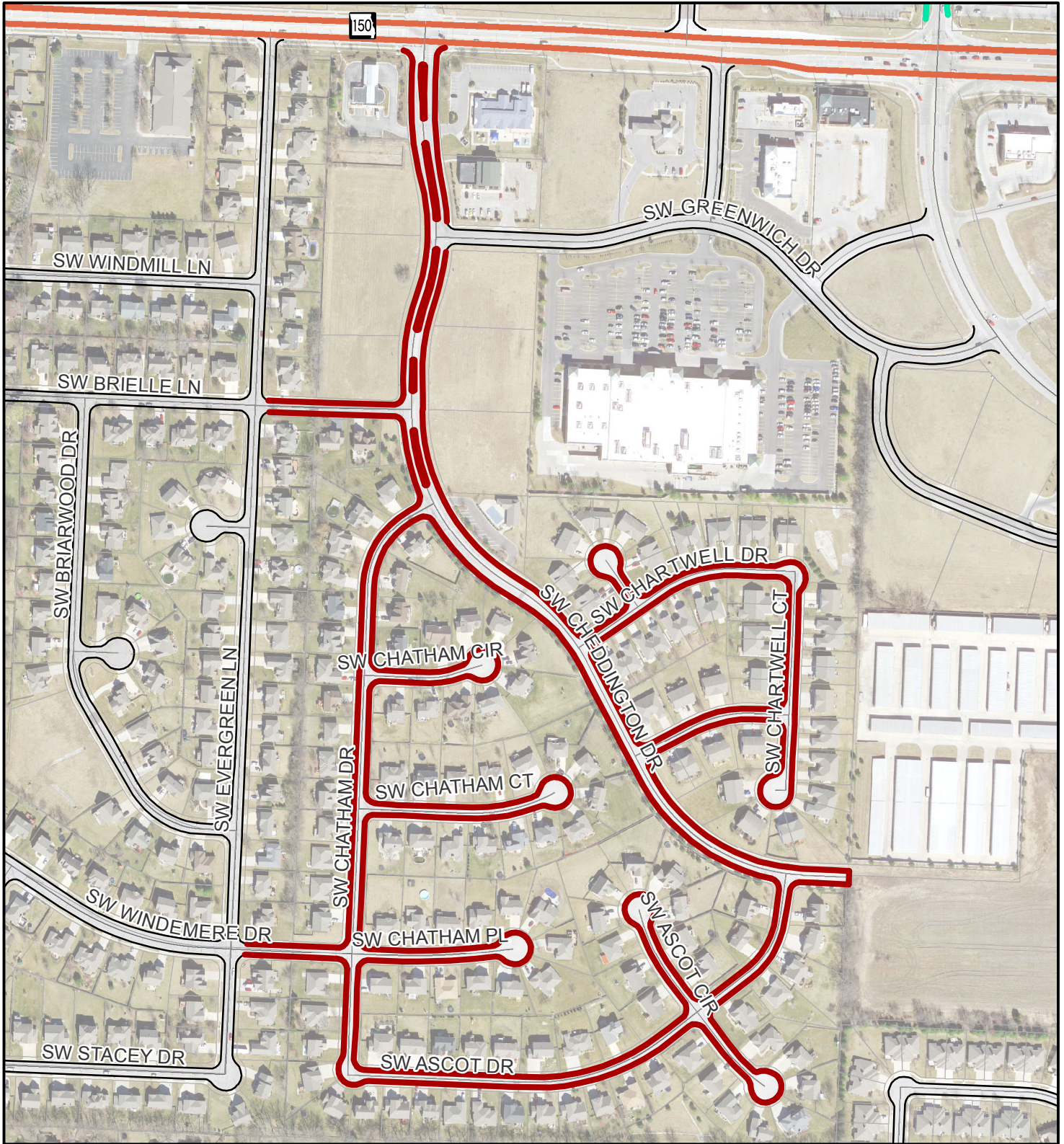
Area 12 -
Market Street

Legend



- Mill & Overlay - Mill & Fill RC 5-01 (PG 70-22)
- Mill & Overlay - Mill & Fill RC 5-01
- Mill & Overlay RC 5-01
- Mult-Use Trail

City of Lee's Summit Mill & Overlay 18/19 - Proj. No.324-18/19 (overlay)



Area 13 -
Cheddington

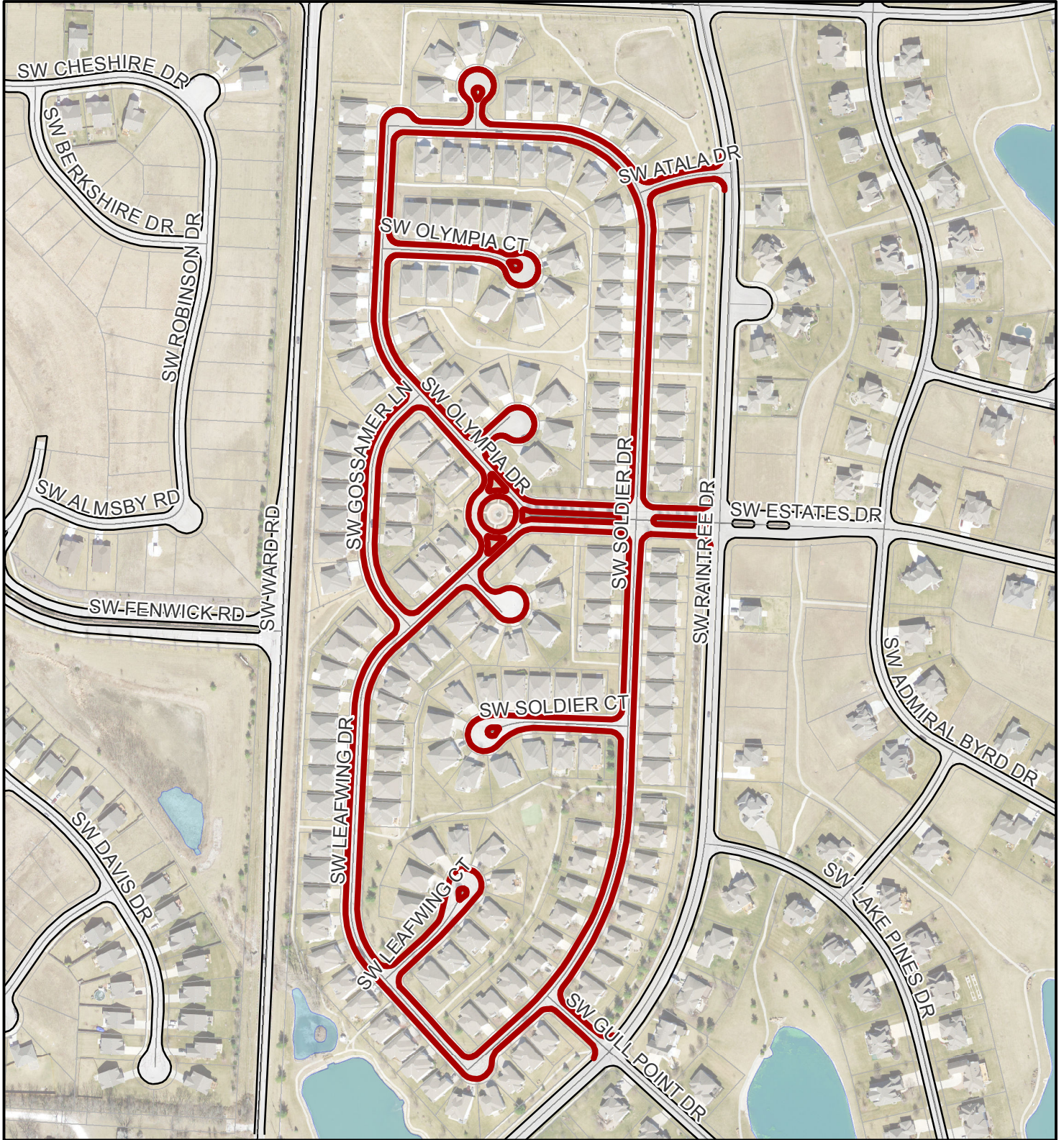
Legend



- Mill & Overlay - Mill & Fill RC 5-01 (PG 70-22)
- Mill & Overlay - Mill & Fill RC 5-01
- Mill & Overlay RC 5-01
- Mult-Use Trail

City of Lee's Summit

Mill & Overlay 18/19 - Proj. No.324-18/19 (overlay)

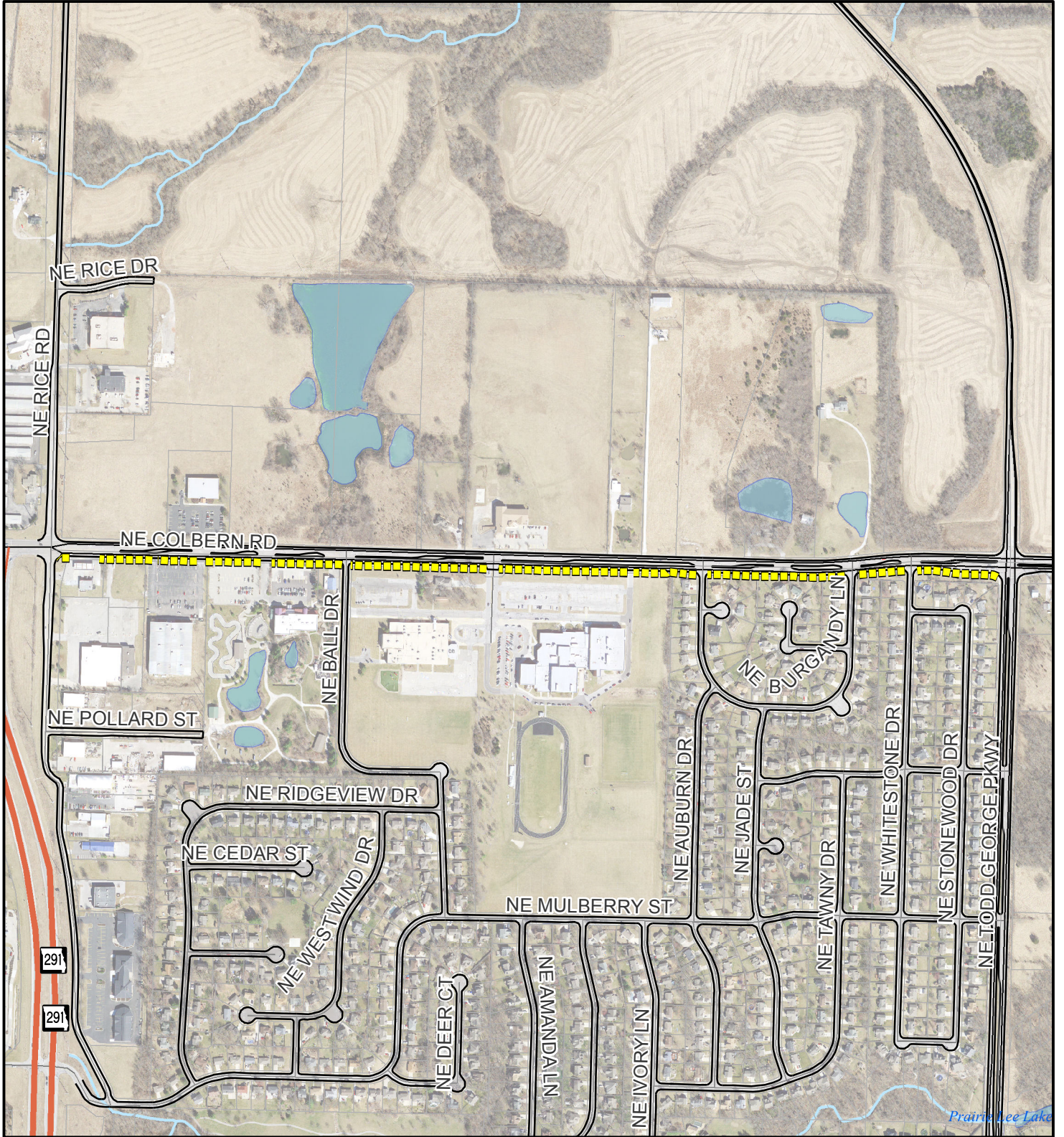


Area 14 -
Fountains

Legend

- Mill & Overlay - Mill & Fill RC 5-01 (PG 70-22)
- Mill & Overlay - Mill & Fill RC 5-01
- Mill & Overlay RC 5-01
- Mult-Use Trail

City of Lee's Summit Mill & Overlay 18/19 - Proj. No.324-18/19 (overlay)



Area 15 -
Colbern - Multi-Use



Legend

- Mill & Overlay - Mill & Fill RC 5-01 (PG 70-22)
- Mill & Overlay - Mill & Fill RC 5-01
- Mill & Overlay RC 5-01
- - - - Multi-Use Trail