

**N M-291**

**Hamblen Rd**

Stormwater Detention

Office/Industrial

Public Square /  
Outdoor Arts Corridor

Retail with Surface  
Parking

Theater/Ent.

Structure Parking  
with Retail/Resid.

Office

Existing  
Industrial

**US 50 Hwy**

**Union-Pacific RR**

**Bailey Rd**

**16th St**

Pedestrian  
Connection

DT Gateway  
& Monument

New F

New A

New B

New D

New C

Future Fire  
Station

**S M-291**

**Jefferson St**

New H

New J

New G

New I

**Persels Rd**

Mixed Use with  
Structure Parking

Multi-family  
Apartments

Office &  
Senior Service

Senior Living

Retail/Resid.  
Mixed Use

Hotel

Structure Parking with  
Retail Wraparound

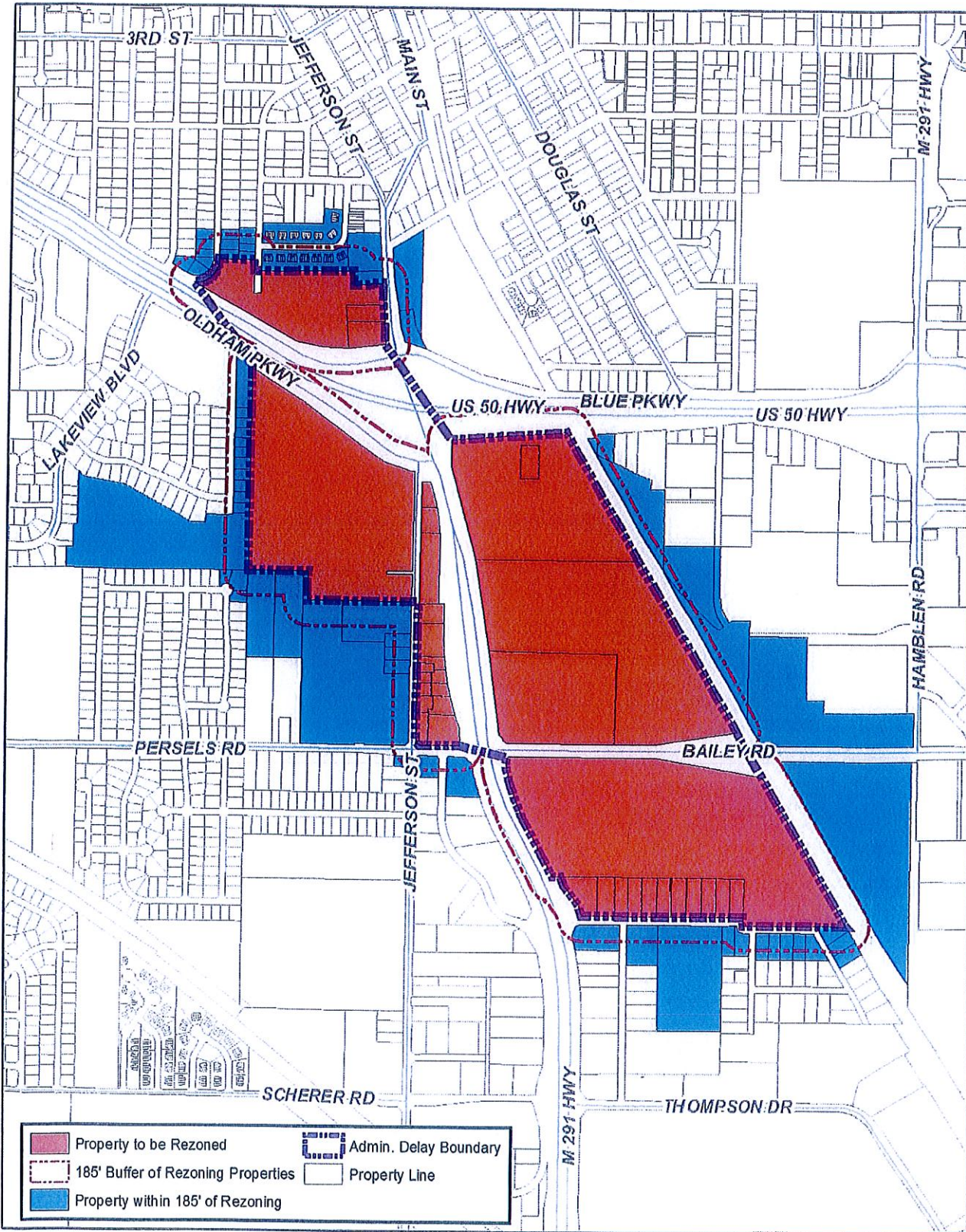
Structure Parking with  
Mixed Use Wraparound

Retail/Resid.  
Mixed Use

**"EnVision LS" Master  
Development Plan**



# Property Notification Map



Map Date: 9-12-2016  
 Planning and Codes Administration

