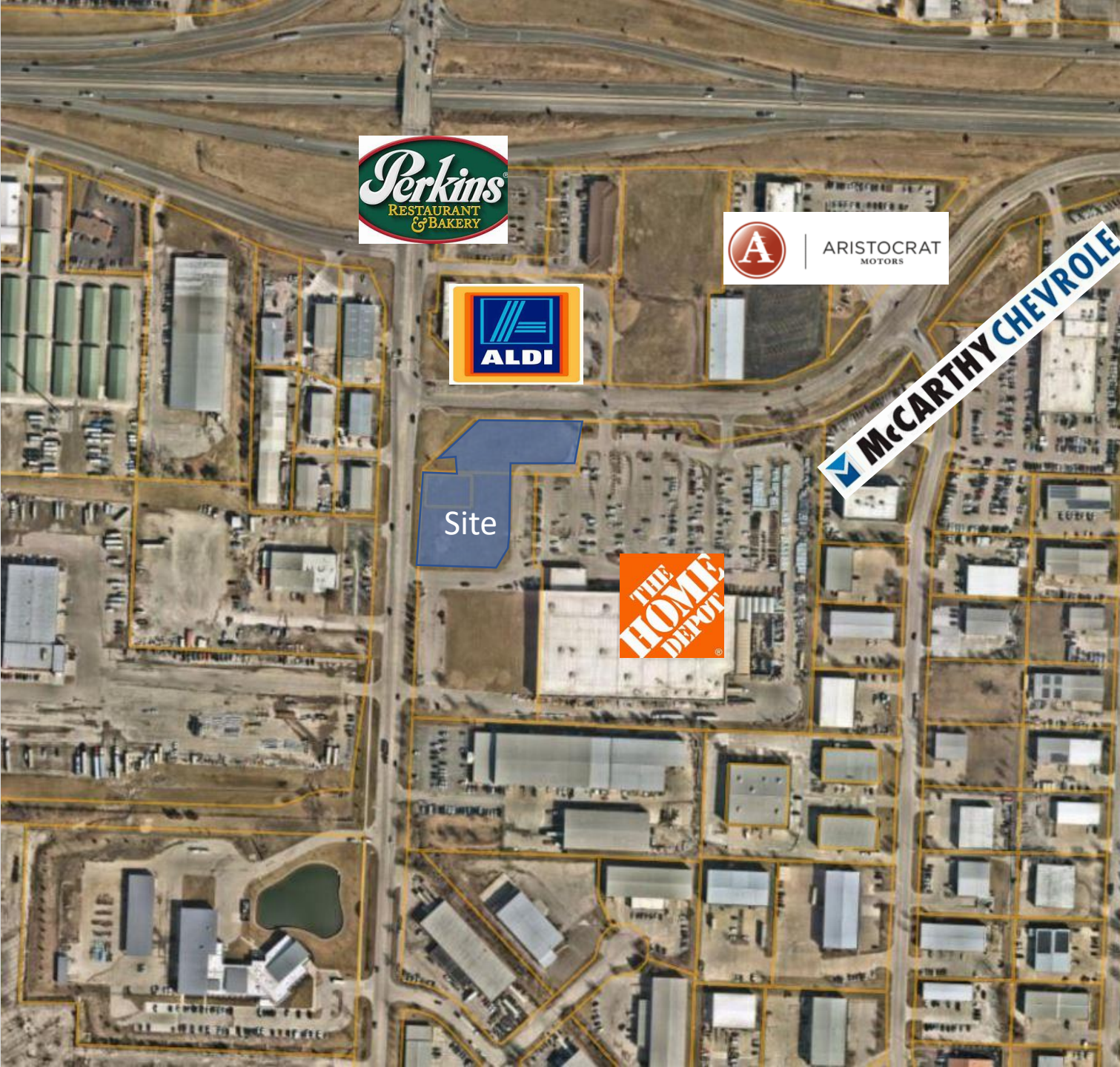


LP Mart



PL2022-195-Preliminary Development Plan

Lee's Summit Planning Commission – July 14, 2022



Project Location

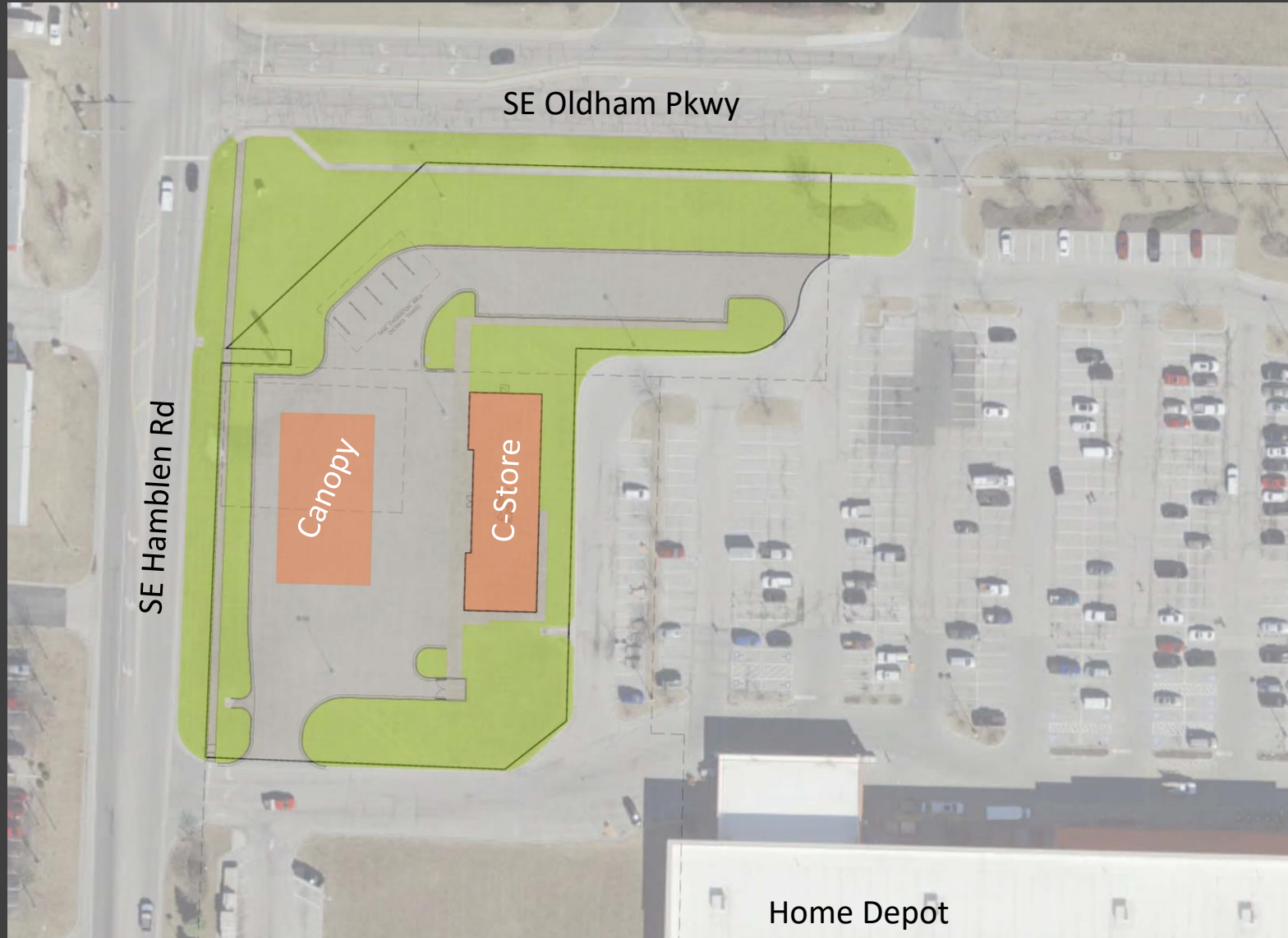
601 SE Oldham Pkwy
Lee's Summit, MO

Approximately 2.0 acres generally located at the Southeast corner of SE Hamblen Rd and SE Oldham Pkwy.

Project Team



Project Summary



- 6,250 sf Store
- 16 Dispensers

Zoning Map



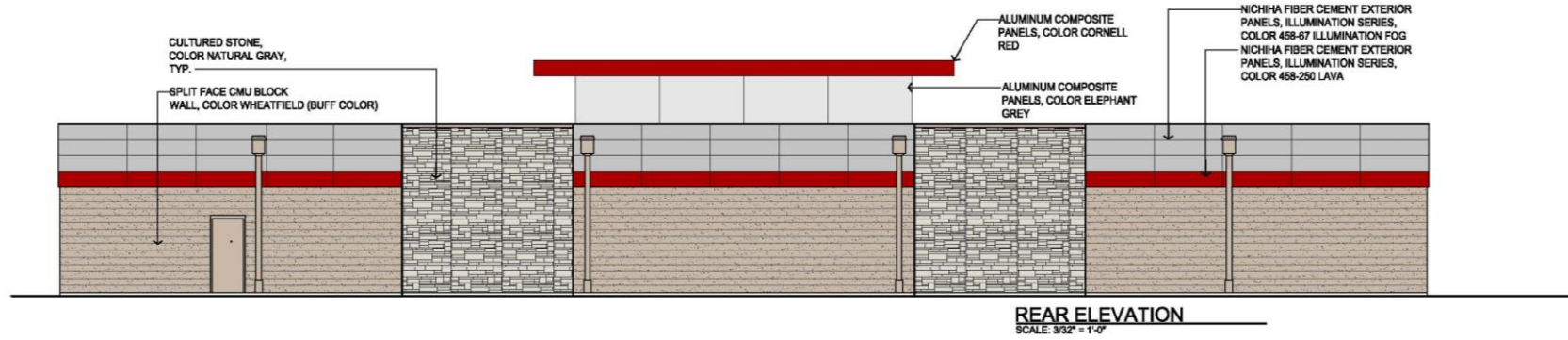
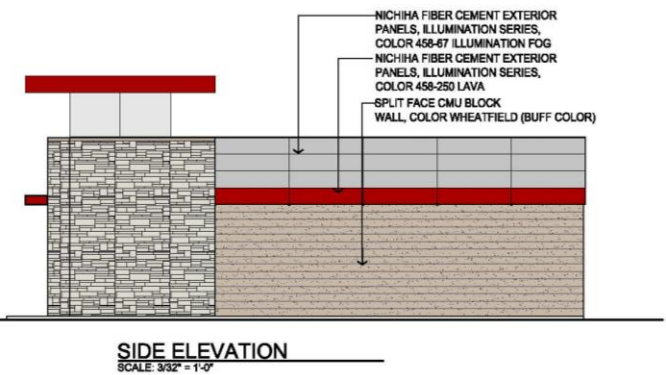
Current Zoning

PMIX

Setback for zoning districts:

	PMIX
Front Yard	20
Rear Yard	10
Side Yard	20

Elevations



Community Meeting Summary: July 7, 2022

50 SE 30th Street

Attendees

None

Comments

None

An aerial photograph of an industrial or commercial district. The scene is dominated by large, light-colored industrial buildings, many with flat roofs. There are several large parking lots filled with vehicles. A network of roads and highways, including a multi-lane highway with a median, crisscrosses the area. Some buildings have distinctive colors, like a blue-roofed structure. The overall tone of the image is somewhat muted, with a dark overlay.

Thank you

Questions?