

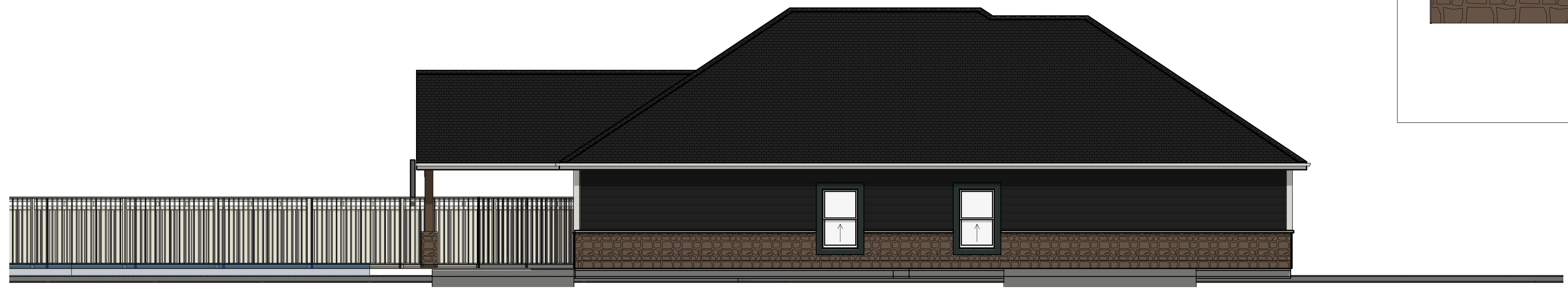




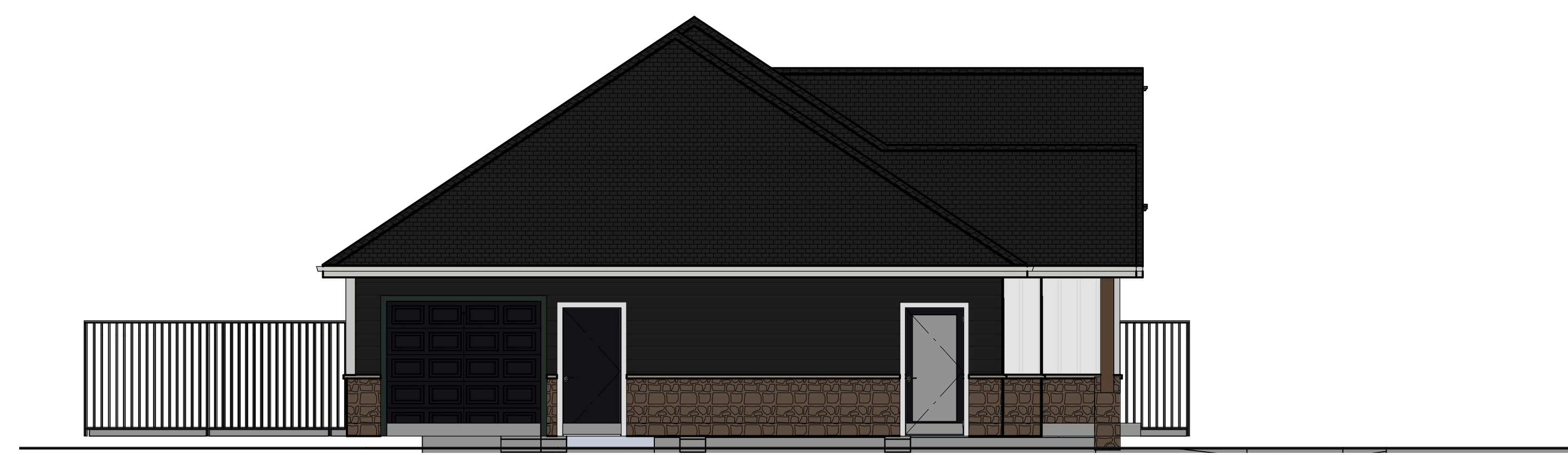
EXTERIOR MATERIAL LEGEND



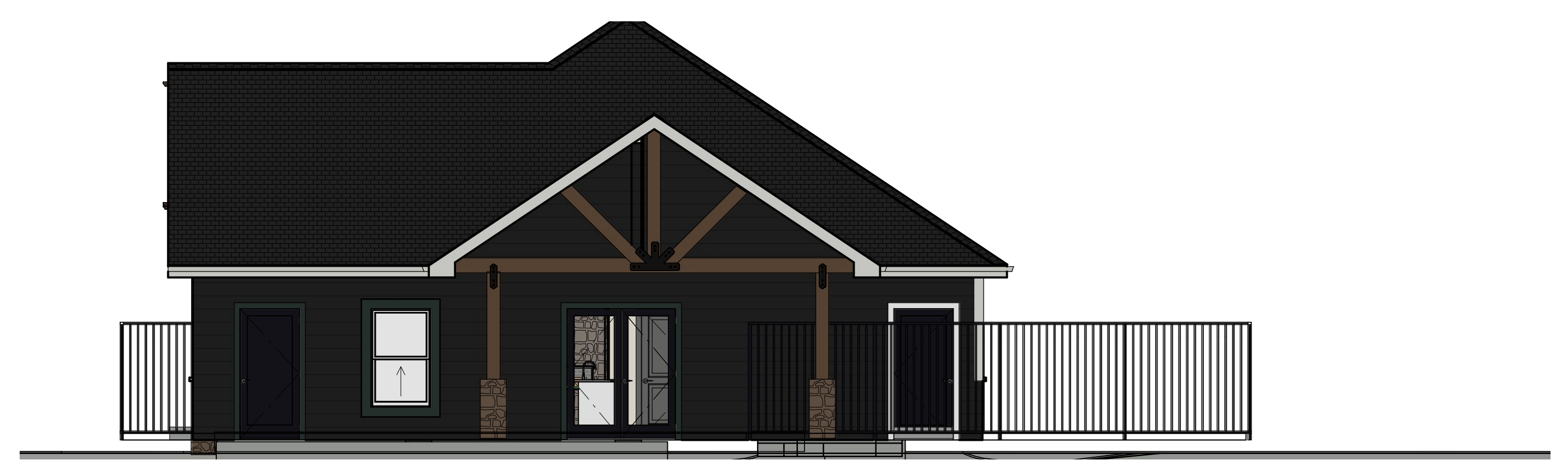
Exterior Elevation Front



Exterior Elevation Rear



Exterior Elevation Left

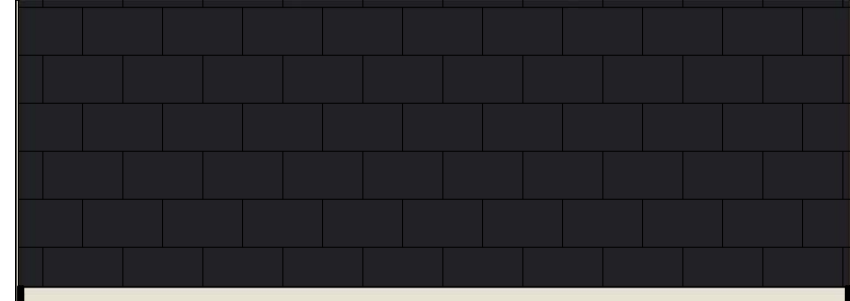
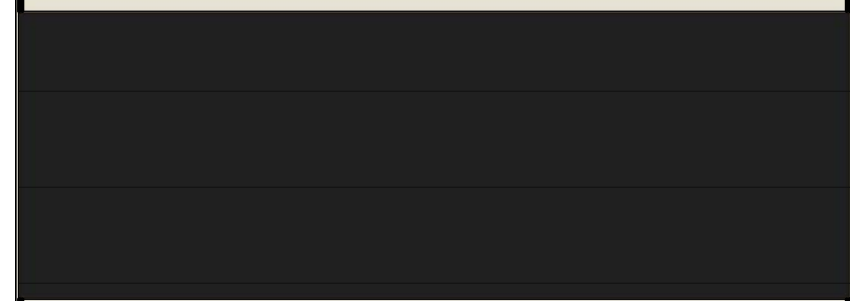

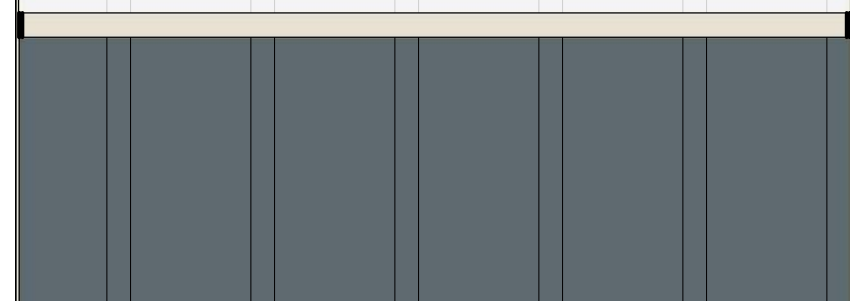
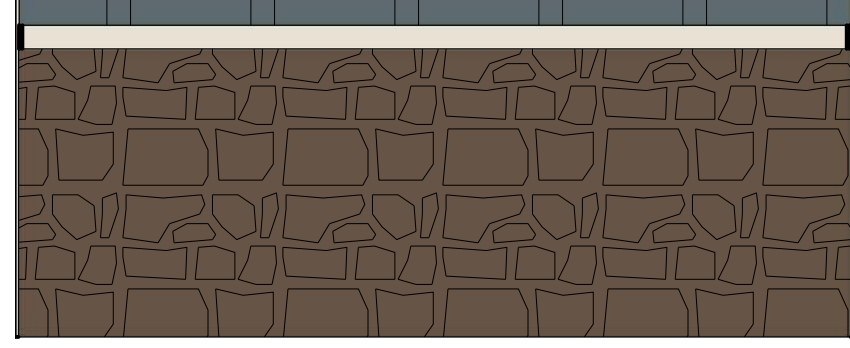


Exterior Elevation Right



Exterior Elevation Front Scale 1/4" = 1'

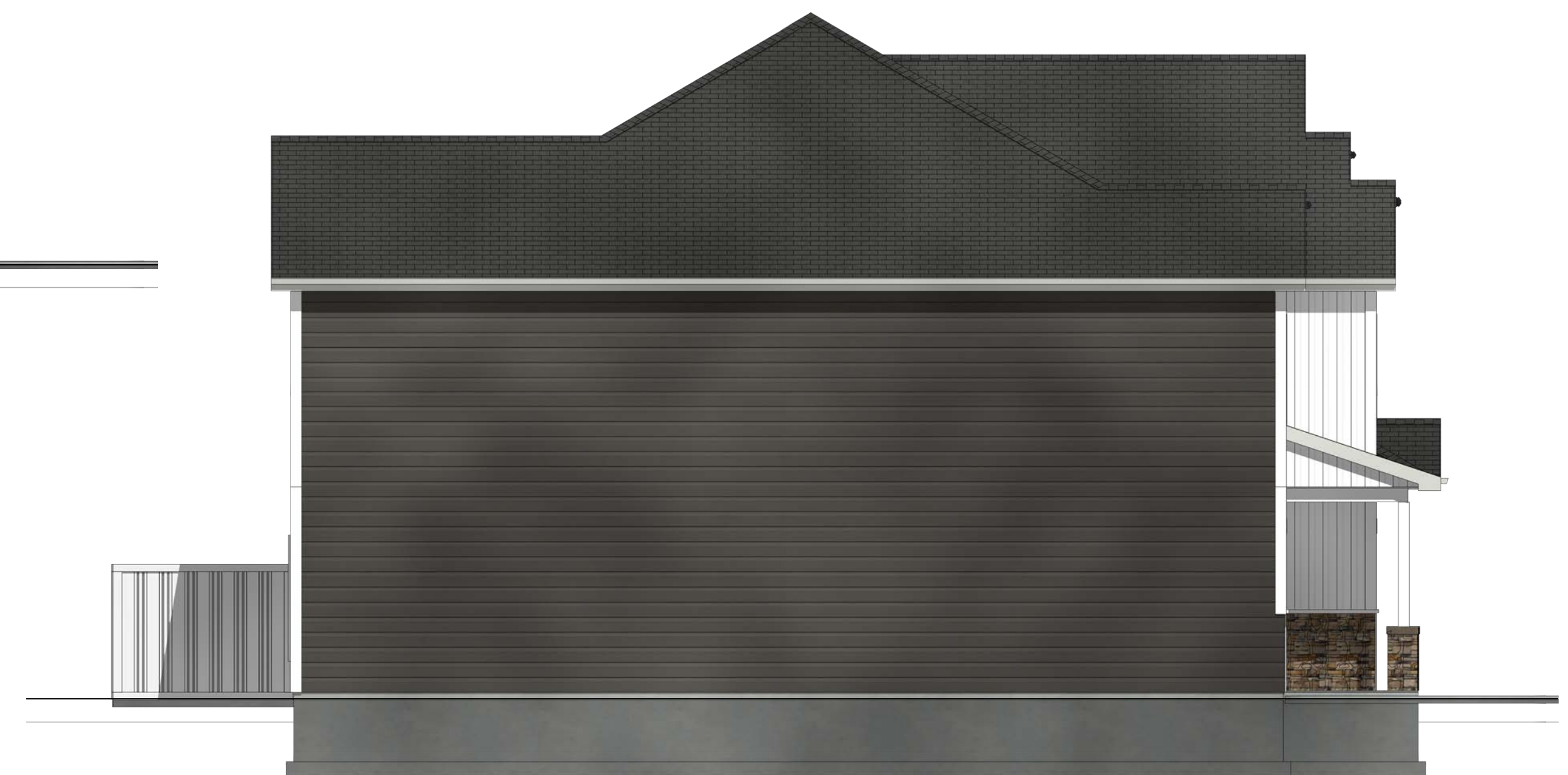
EXTERIOR MATERIAL LEGEND

	COMPOSITE SHINGLE ROOFING
	CEMENT LAP SIDING SW 7068 GRIZZLE GRAY
	CEMENT BOARD & BATTEN SW7005 PURE WHITE
	CEMENT BOARD & BATTEN SW7075 WEB GRAY
	MFG. STONE VENEER CORONADO MONTANA

SIDING & ACCENT COLORS TO BE ALTERNATED BY BUILDING



Exterior Elevation Rear Scale 3/16" = 1'



Exterior Elevation Left Scale 3/16" = 1'



39'6"
HIGHEST POINT

35'6"
PARAPET HEIGHT

32"
ROOF HEIGHT

30"
FLOOR 3 HEIGHT

19'6"
FLOOR 2 HEIGHT

9"
FLOOR 1 HEIGHT



PRIMARY FACADE

GLASS 20%

GENUINE STUCCO 26%

STONE 26%

CEMENT SIDING 28%

Exterior Elevation Front



SECONDARY FACADE

GLASS 22%

GENUINE STUCCO 19%

STONE 23%

CEMENT SIDING 36%

Exterior Elevation Rear



SECONDARY FACADE

GLASS 16%

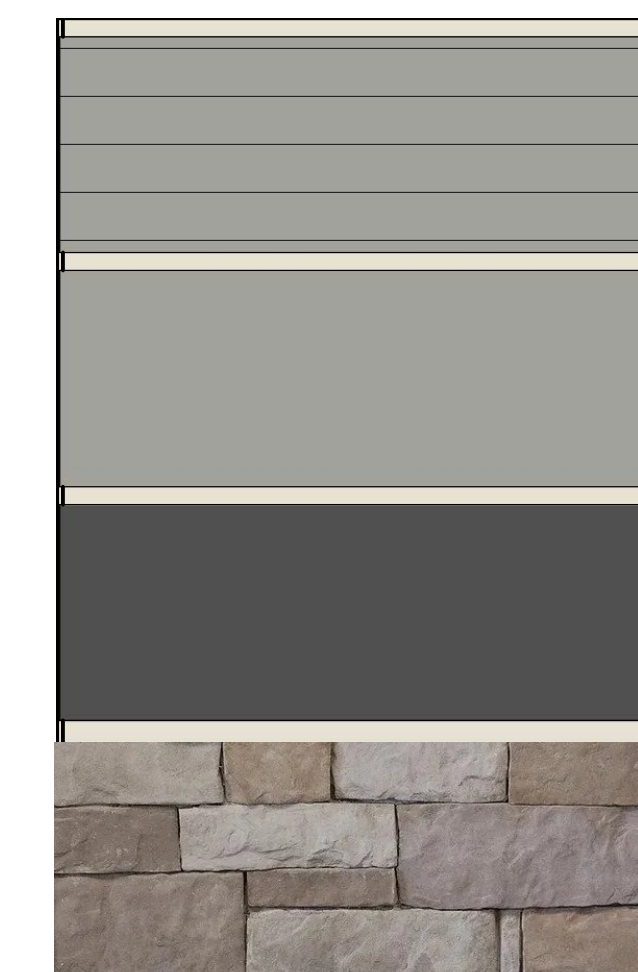
GENUINE STUCCO 32%

STONE 34%

CEMENT SIDING 18%

Exterior Elevation Sides

EXTERIOR MATERIAL LEGEND



LAP SIDING - CEMENT
SW7667 ZIRCON

GENUINE LIGHT STUCCO
SW7667 ZIRCON

GENUINE DARK STUCCO
SW7075 WEB GRAY

MFG. STONE VENEER
CORONADO NATURAL
DRYSTACK



SCALE

3/8" = 1'

SHEET

A-7