

PLAN NOTES

- 3 DECORATIVE BOLLARD WITH INTEGRAL LIGHTING



1627 MAIN STREET, SUITE 600
KANSAS CITY, MO 64108



1627 MAIN STREET, SUITE 100
KANSAS CITY, MO 64108



1701 WALNUT STREET, SUITE 300
KANSAS CITY, MO 64108

KC - LEE'S SUMMIT REGIONAL
LEE'S SUMMIT, MISSOURI
GENERAL AVIATION TERMINAL
CITY PROJECT NO. - 17932172



LEES SUMMIT MUNICIPAL AIRPORT
LEES SUMMIT, MO

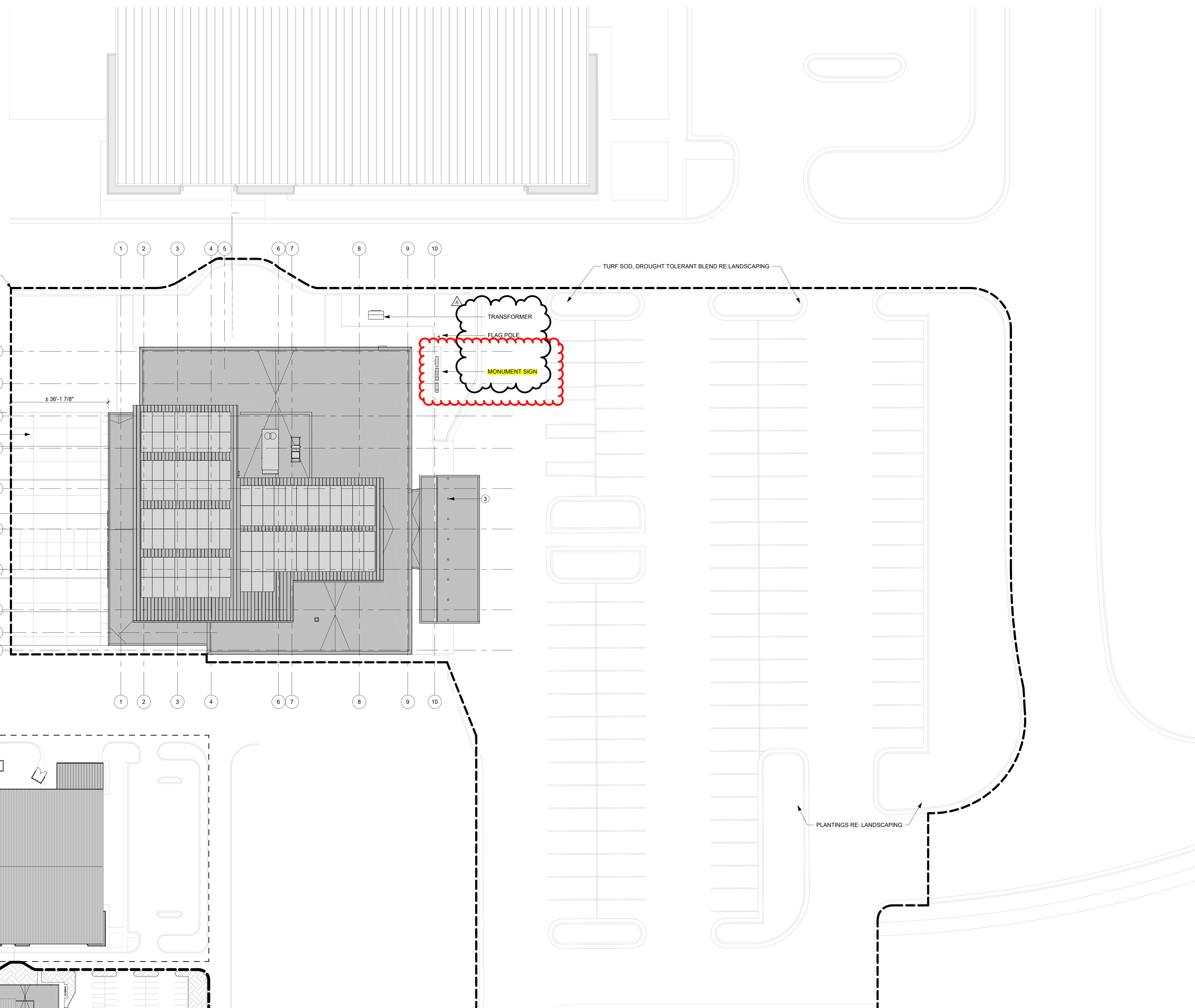
MARK	DATE	DESCRIPTION
A	01.03.25	CITY REVIEW COMMENTS

PROJECT NO: 2403
 REVIT FILE: 2403 Lee's Summit Terminal-R24.rvt
 DESIGNED BY: Designer
 DRAWN BY: EM
 CHECKED BY: JSB
 APPROVED BY: Approver
 COPYRIGHT 2024

SHEET TITLE

SITE PLAN

A-100
SHEET OF



EXTENTS OF PROJECT - REFER TO CIVIL FOR LIMITS OF DISTURBANCE

PAVEMENT SCORING

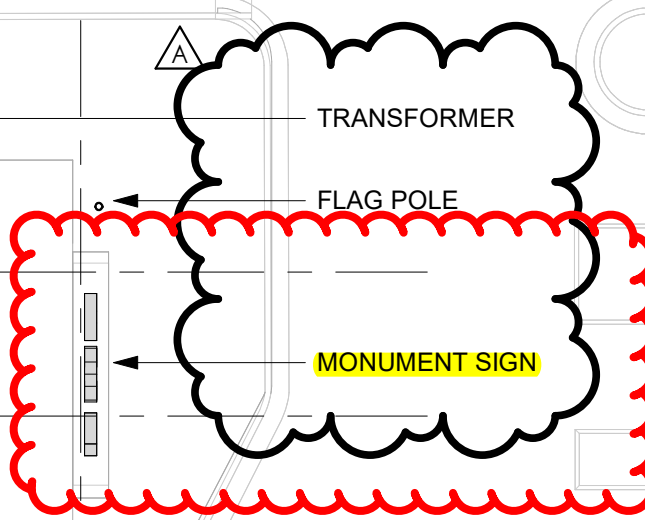
± 36'-1 7/8"

± 86'-5 1/4"

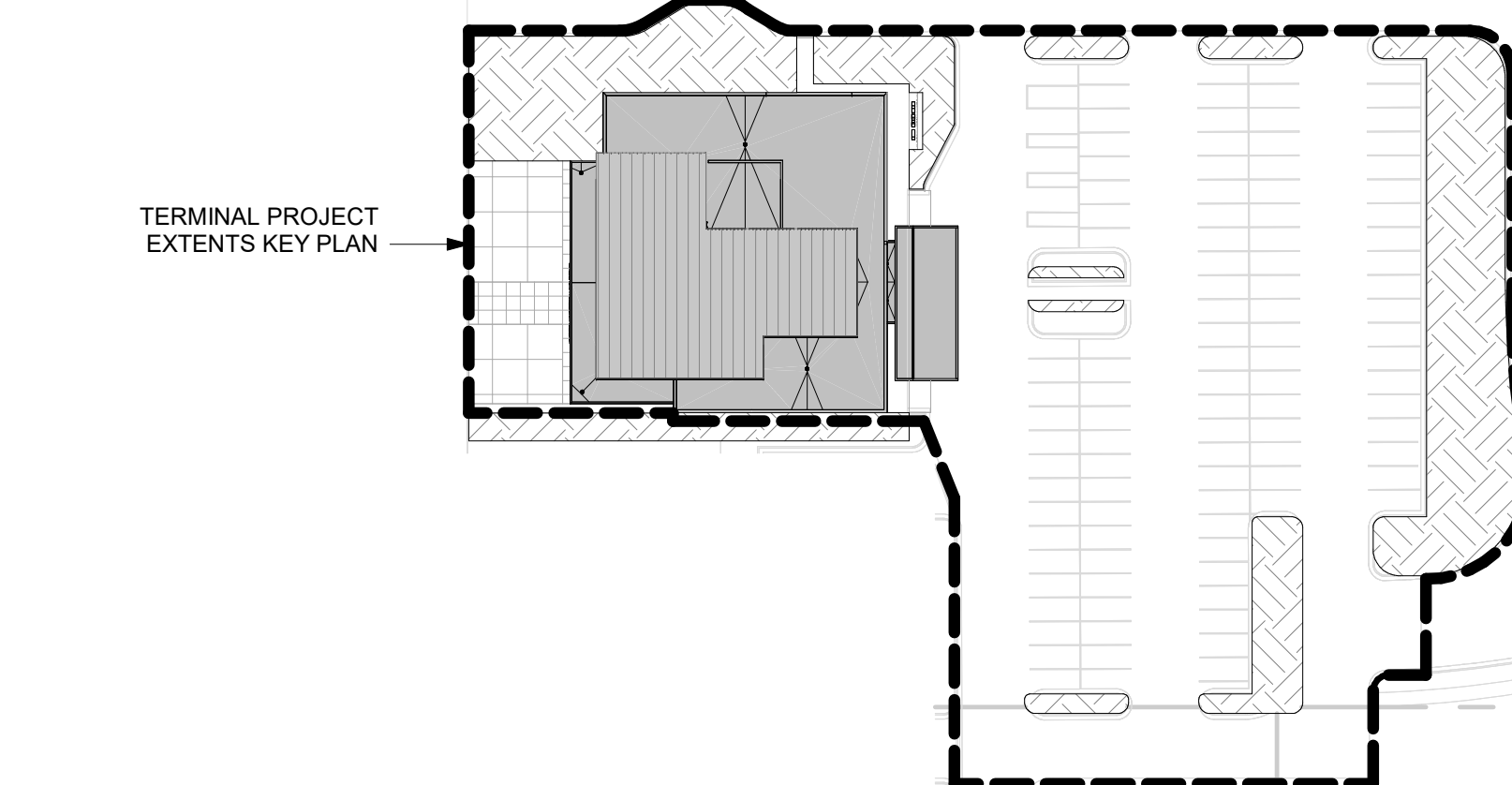
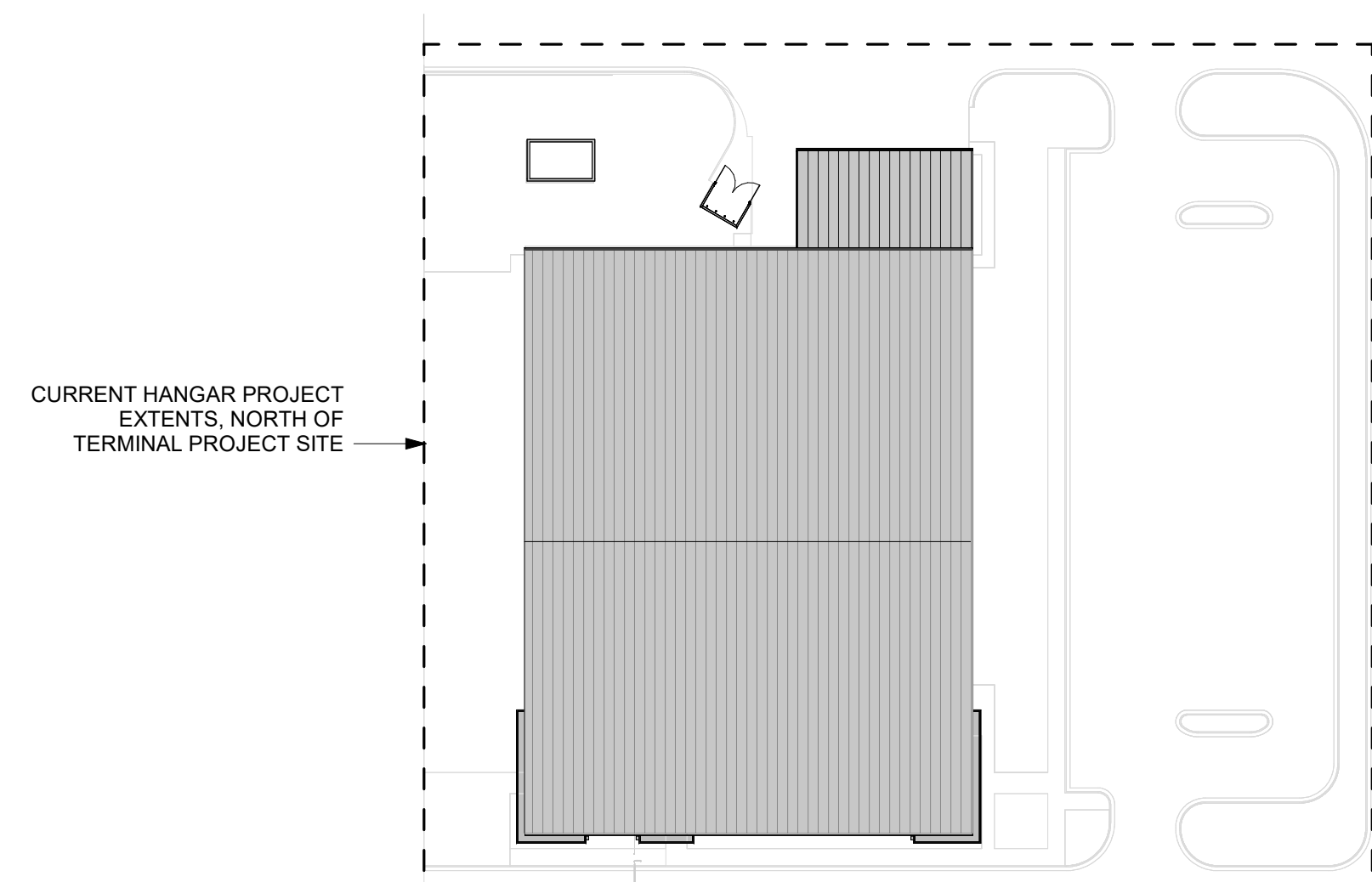
15'-0"

28'-2 5/8"

TURF SOD, DROUGHT TOLERANT BLEND RE-LANDSCAPING



PLANTINGS RE: LANDSCAPING



SITE KEY PLAN
1/64" = 1'-0" **2**

SITE PLAN
1/16" = 1'-0" **1**

**KC - LEE'S SUMMIT REGIONAL
LEE'S SUMMIT, MISSOURI**

**GENERAL AVIATION TERMINAL
CITY PROJECT NO. - 17932172**



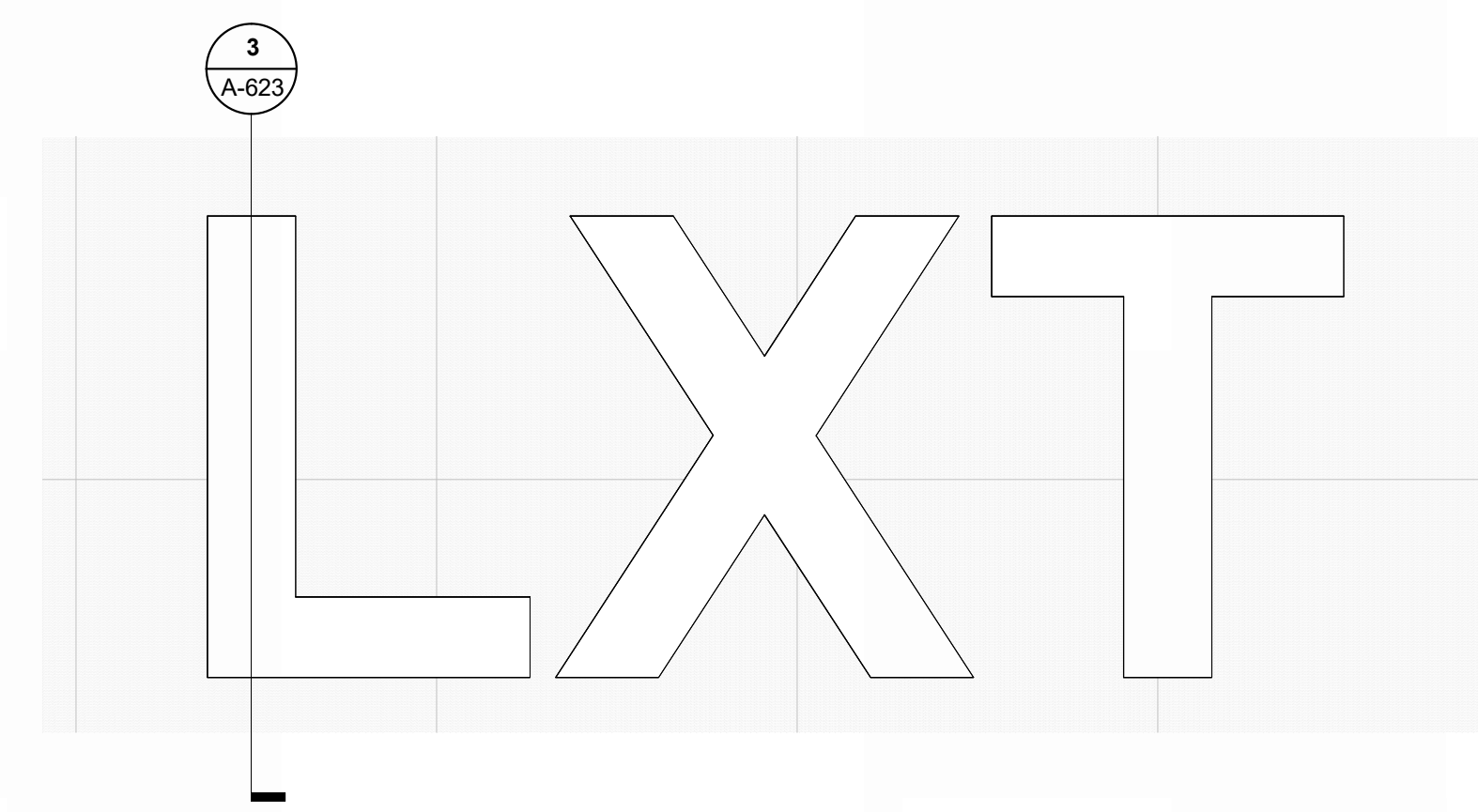
LEES SUMMIT MUNICIPAL AIRPORT
LEES SUMMIT, MO

MARK	DATE	DESCRIPTION
A	01.03.25	CITY REVIEW COMMENTS

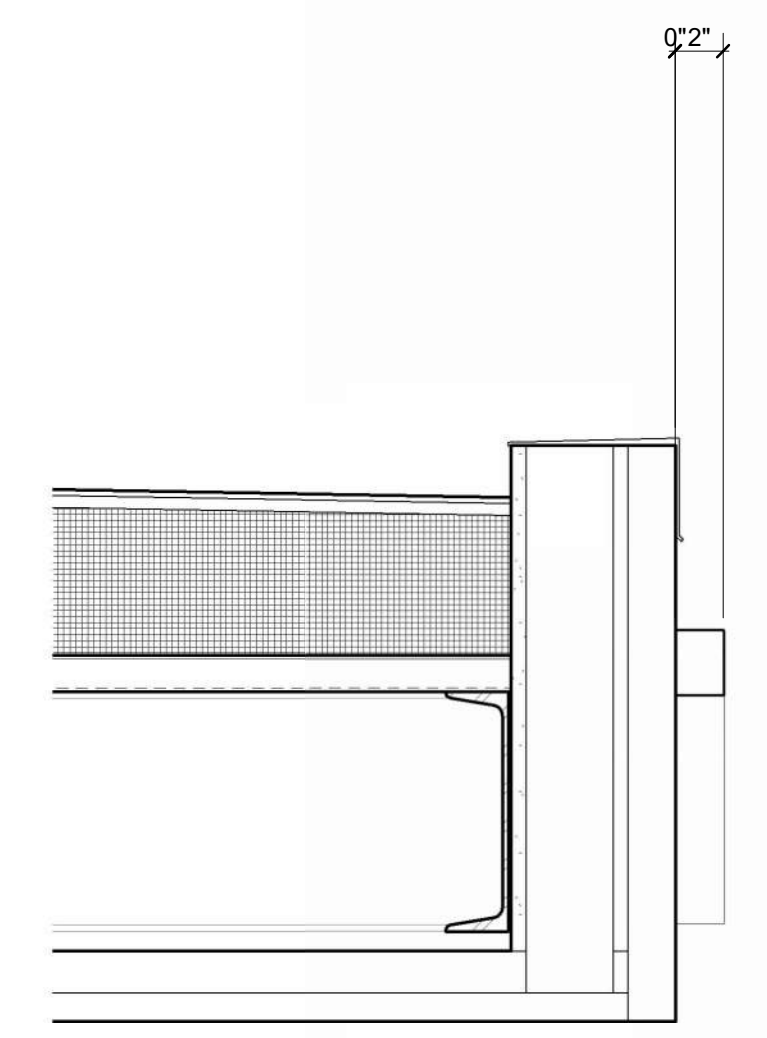
PROJECT NO:	2403
REVIT FILE:	2403 Lee's Summit Terminal-R24.rvt
DESIGNED BY:	Designer
DRAWN BY:	HJM
CHECKED BY:	JSB
APPROVED BY:	Approver
COPYRIGHT	2024

SHEET TITLE
EXTERIOR SIGNAGE

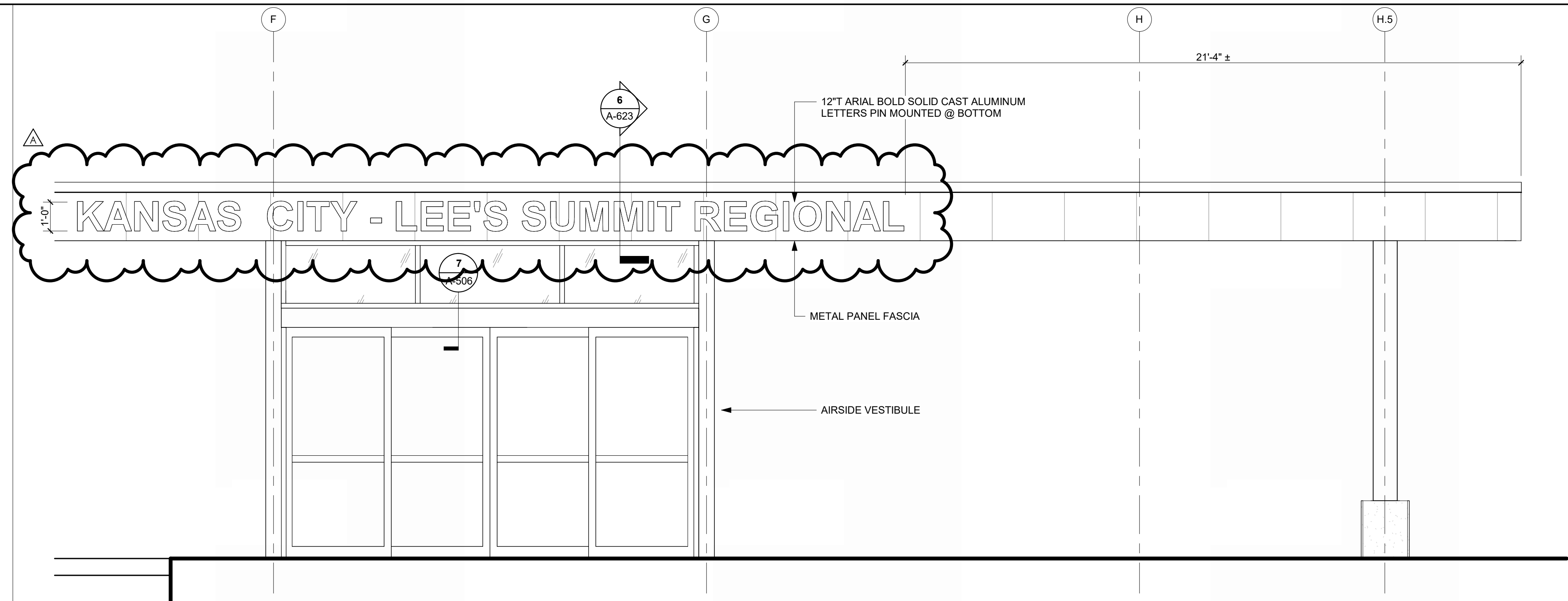
A-623
SHEET OF



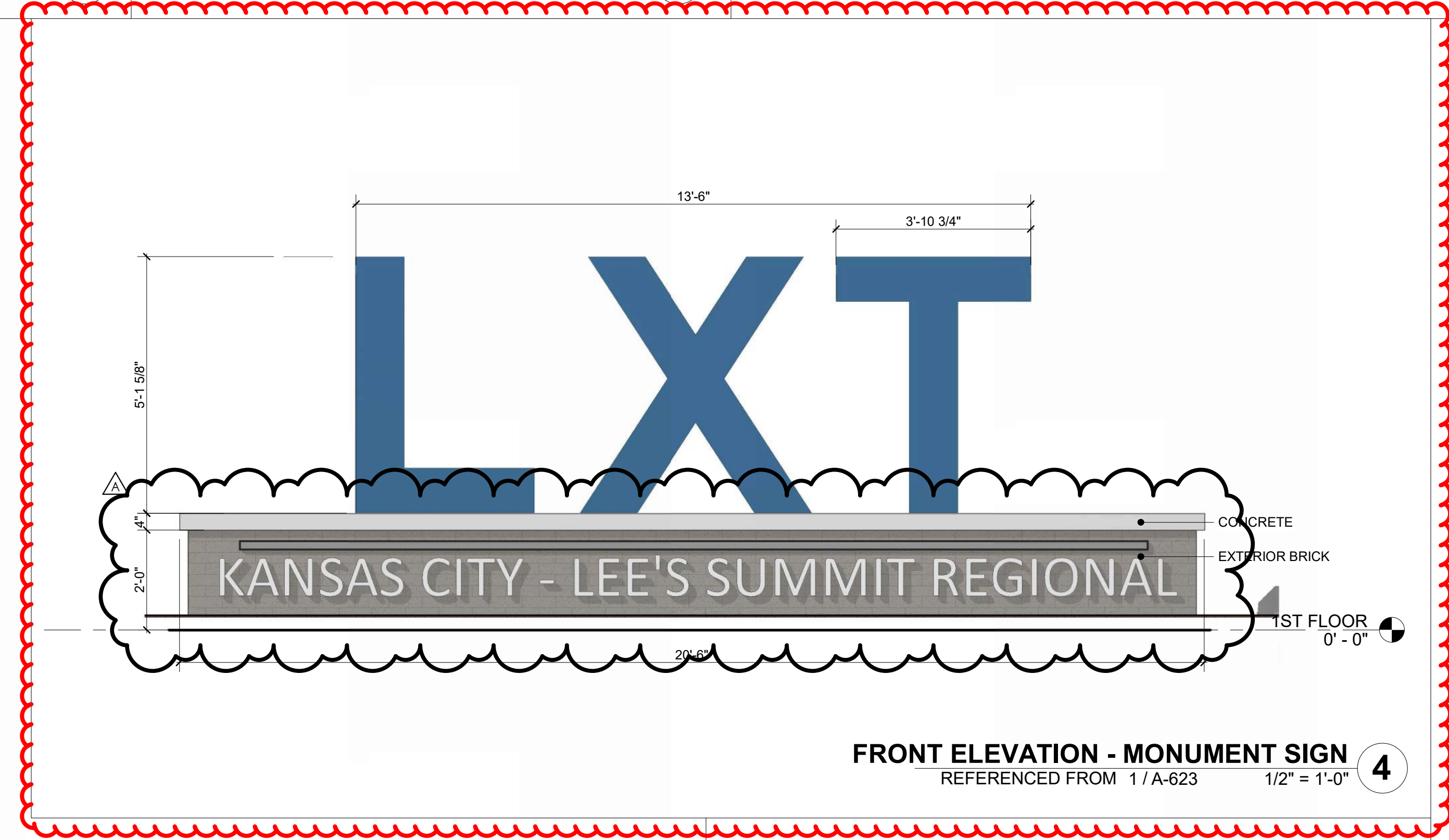
FRONT ELEVATION - INTERIOR LXT SIGNAGE
REFERENCED FROM 1 / A-403 1/2" = 1'-0" **7**



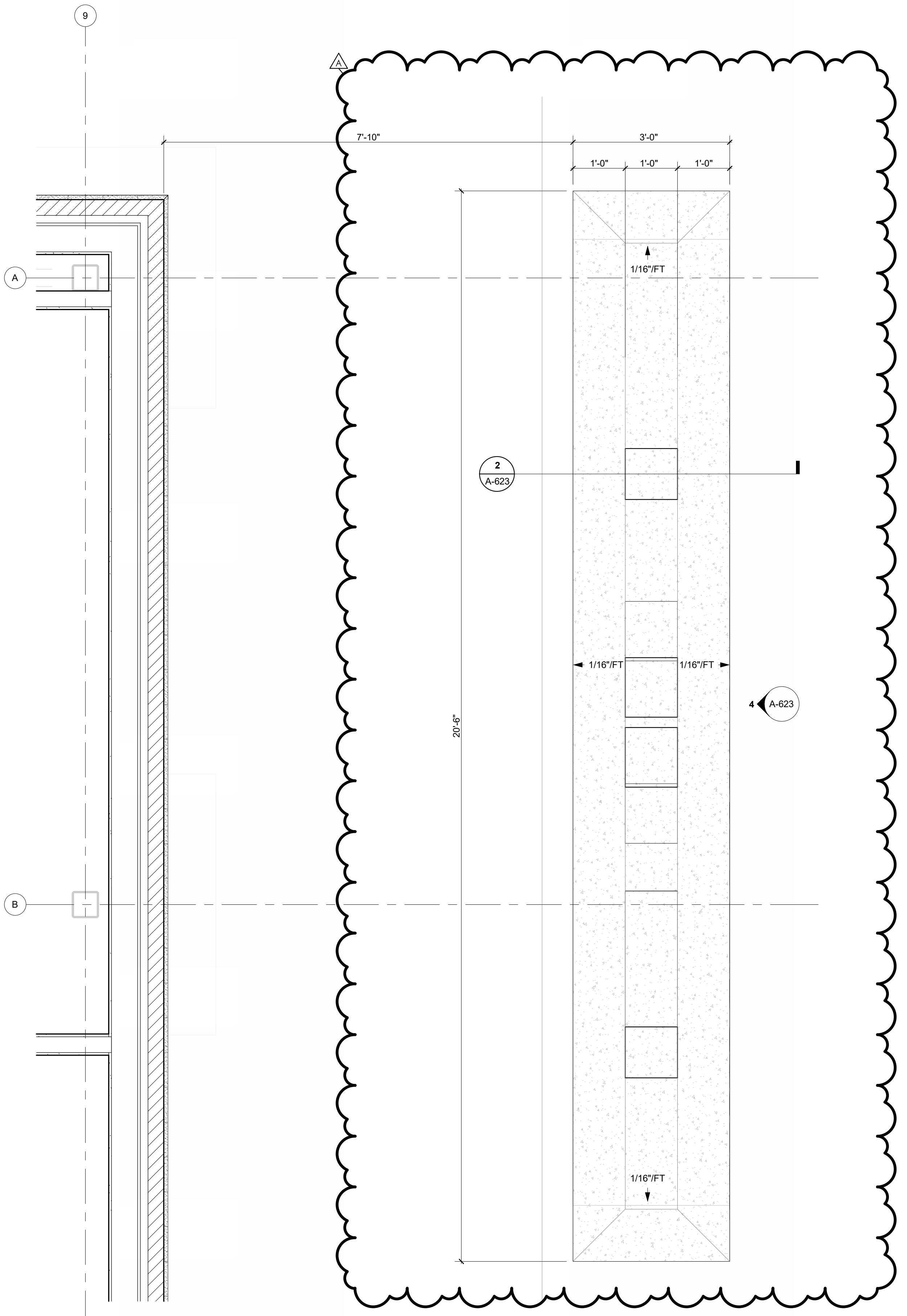
SECTION THRU AIRSIDE SIGNAGE
REFERENCED FROM 5 / A-623 1 1/2" = 1'-0" **6**



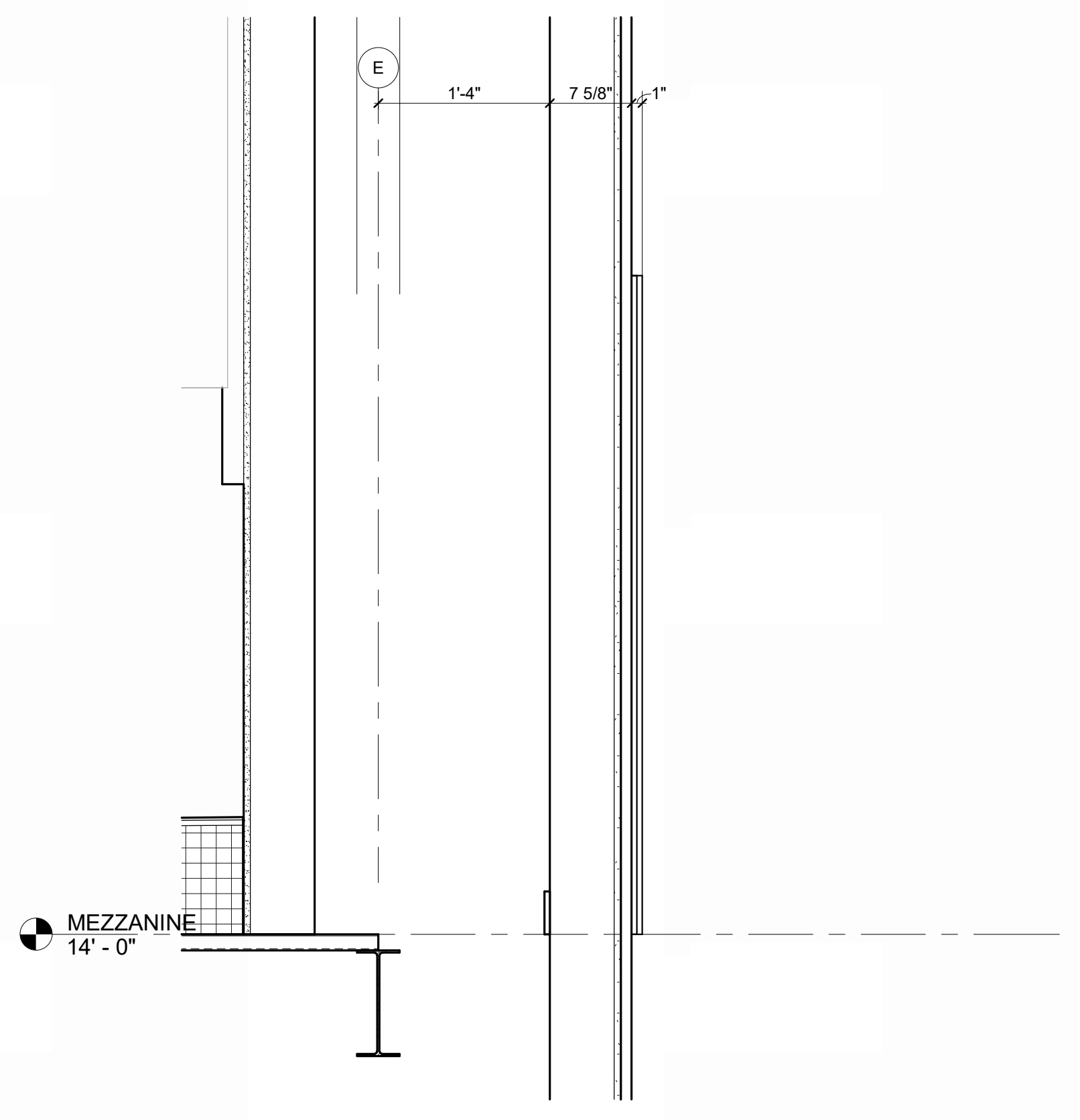
ENLARGED ELEVATION, AIRSIDE SIGNAGE
REFERENCED FROM 1 / A-102 3/8" = 1'-0" **5**



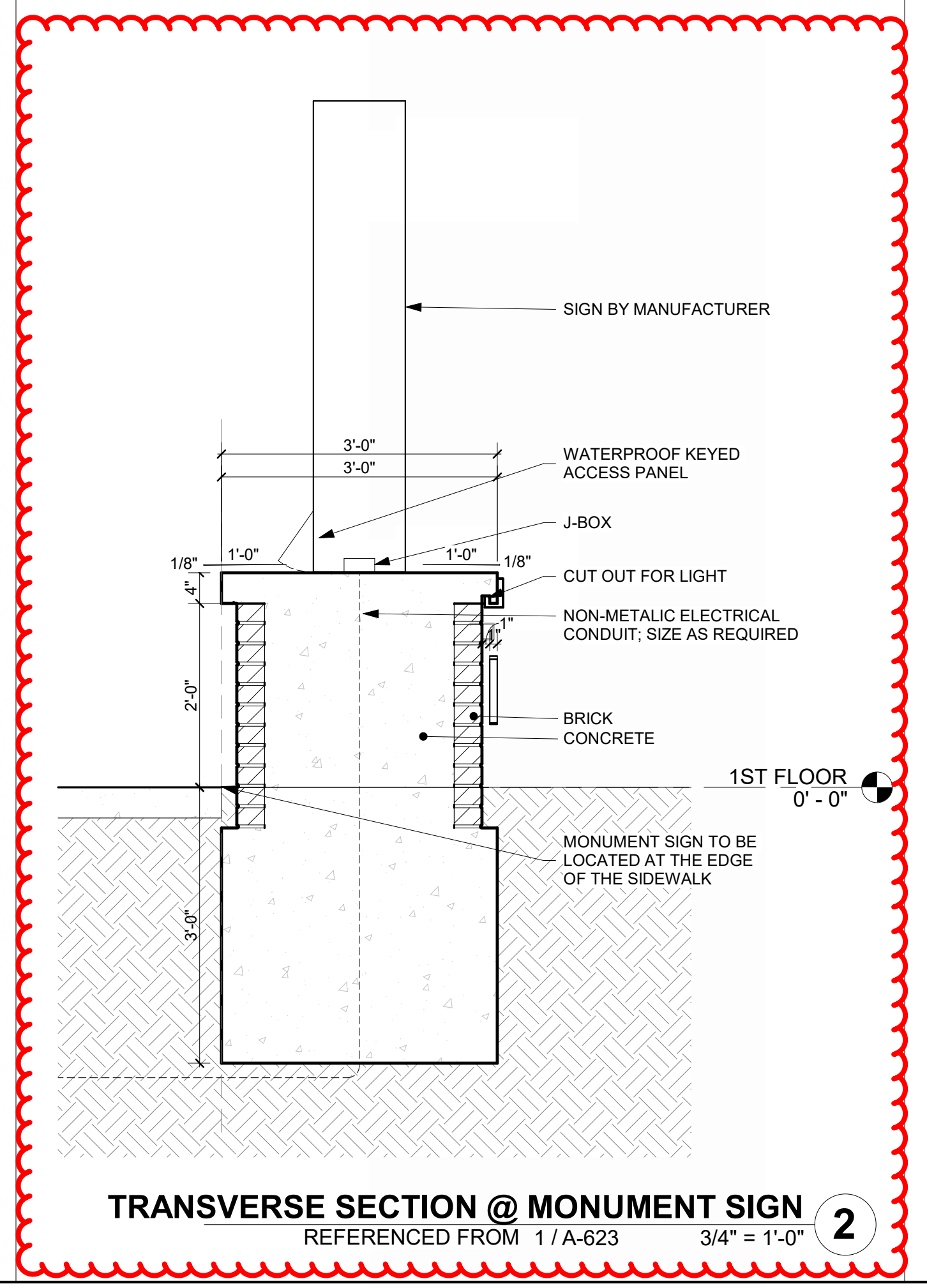
FRONT ELEVATION - MONUMENT SIGN
REFERENCED FROM 1 / A-623 1/2" = 1'-0" **4**



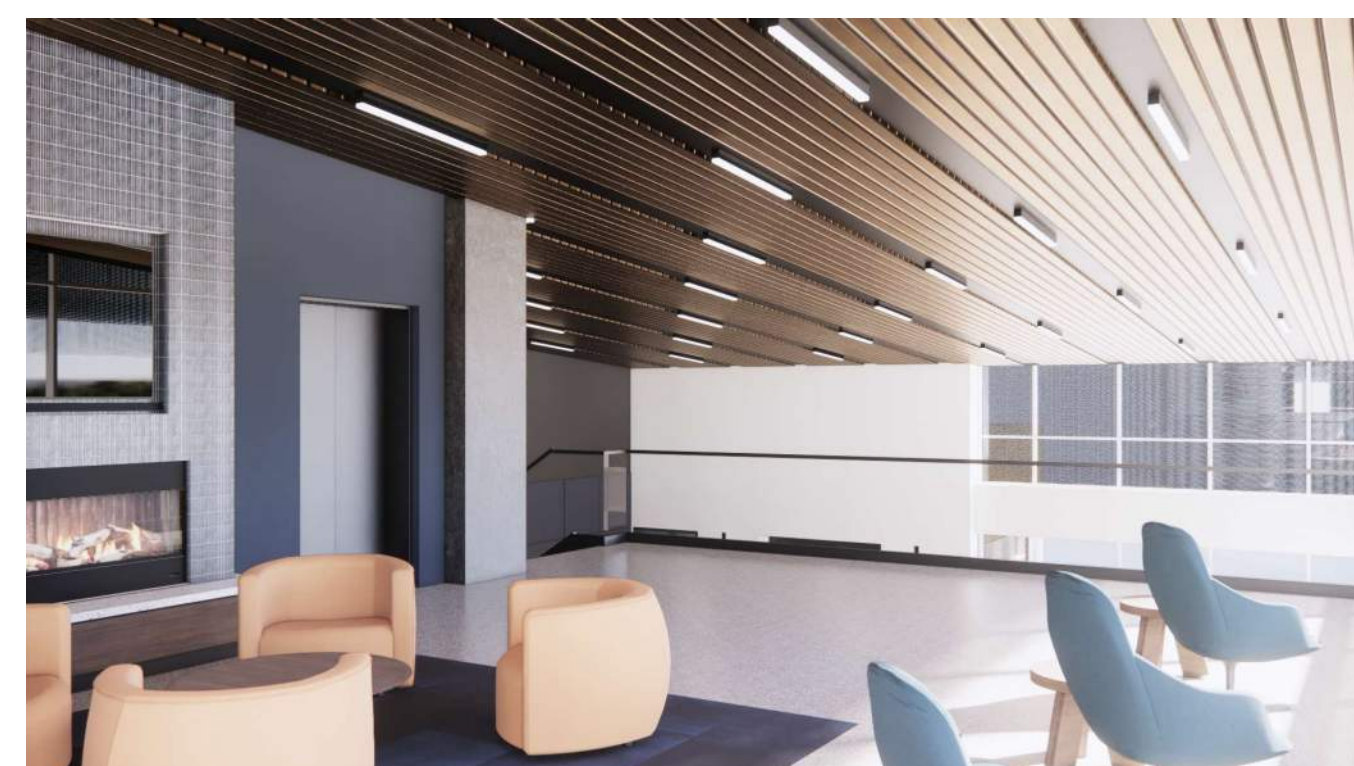
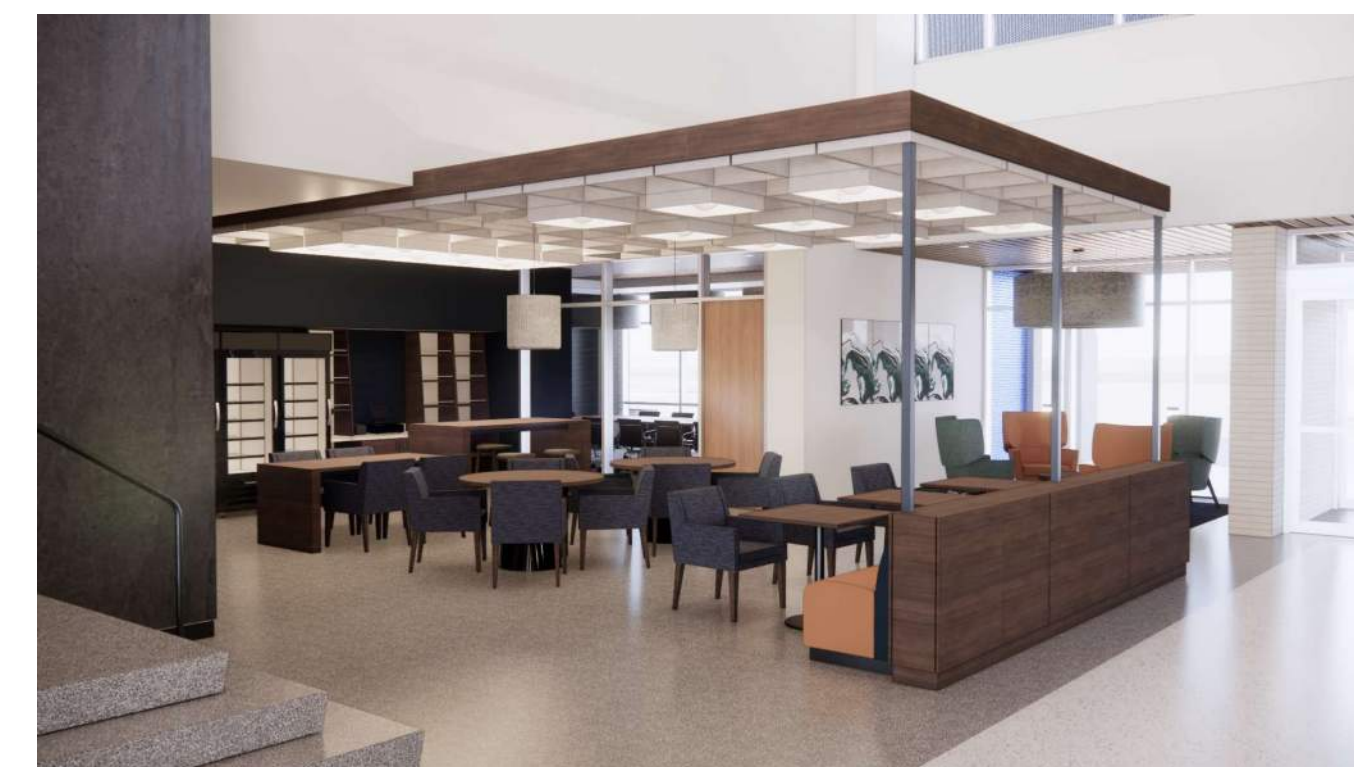
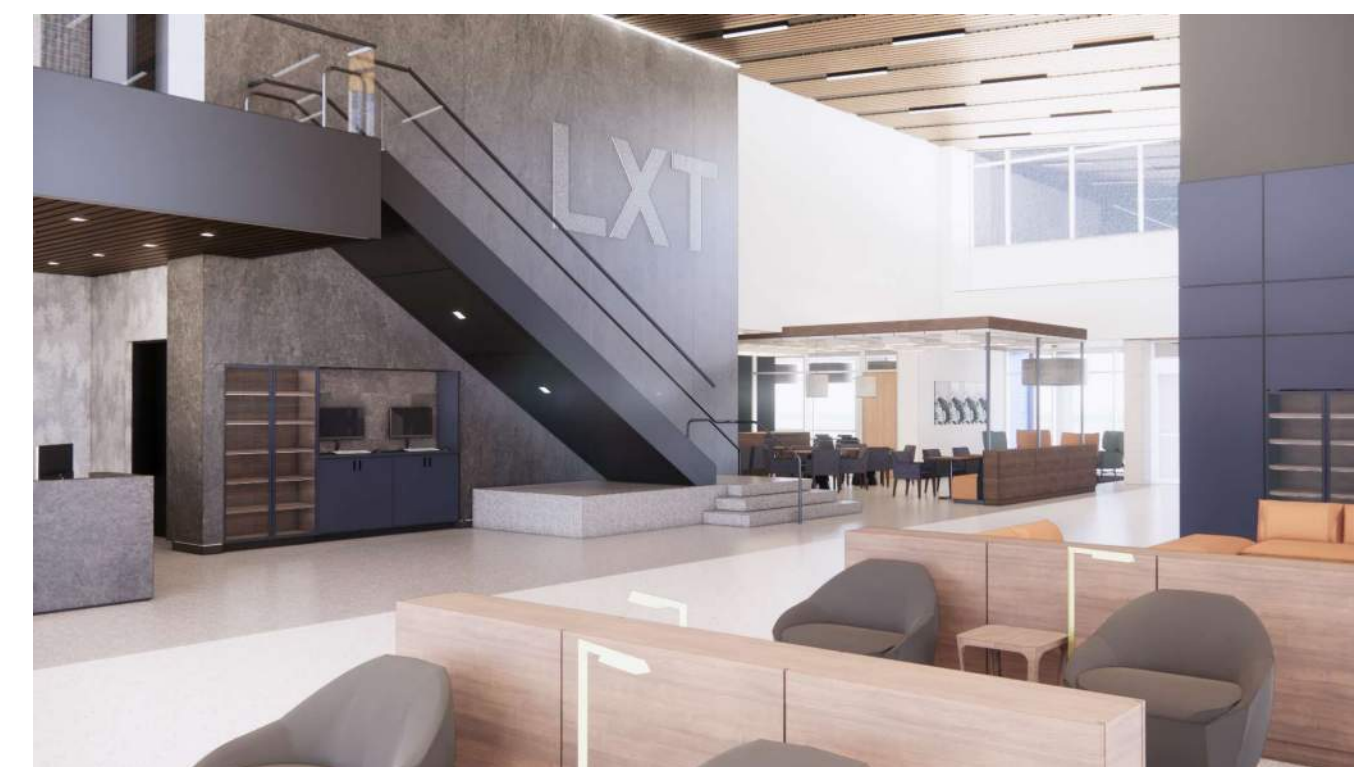
ENLARGED PLAN - MONUMENT SIGN
REFERENCED FROM 1 / A-101 3/4" = 1'-0" **1**



SECTION - INTERIOR LXT SIGNAGE
REFERENCED FROM 7 / A-623 1" = 1'-0" **3**



TRANSVERSE SECTION @ MONUMENT SIGN
REFERENCED FROM 1 / A-623 3/4" = 1'-0" **2**



1627 MAIN STREET, SUITE 600
KANSAS CITY, MO 64108



1627 MAIN STREET, SUITE 100
KANSAS CITY, MO 64108



1701 WALNUT STREET, SUITE 300
KANSAS CITY, MO 64108

KC - LEE'S SUMMIT REGIONAL
LEE'S SUMMIT, MISSOURI

GENERAL AVIATION TERMINAL
CITY PROJECT NO. - 17932172



LEES SUMMIT MUNICIPAL AIRPORT
LEES SUMMIT, MO

MARK DATE	DESCRIPTION
PROJECT NO: 2403	
REVIT FILE: 2403 Lee's Summit Terminal-R24.rvt	
DESIGNED BY: Designer	
DRAWN BY: EM	
CHECKED BY: JSB	
APPROVED BY: Approver	
COPYRIGHT 2024	

SHEET TITLE

3D VIEWS

A-901

SHEET OF

A-623 EXTERIOR SIGNAGE

1. **REVISE** on enlarged plan 1- ENLARGED PLAN - MONUMENT SIGN adjust the size and dimensions.
2. **REVISE** on detail 4-FRONT ELEVATION - MONUMENT SIGN the building name to “Kansas City – Lee’s Summit Regional”.
3. **REVISE** on detail 5-ENLARGED ELEVATION, AIRSIDE SIGNAGE the building name to “Kansas City – Lee’s Summit Regional”.

SUPPLEMENTARY RENDERING



Thank you,

Jason Barker AIA LEED® AP BD+C