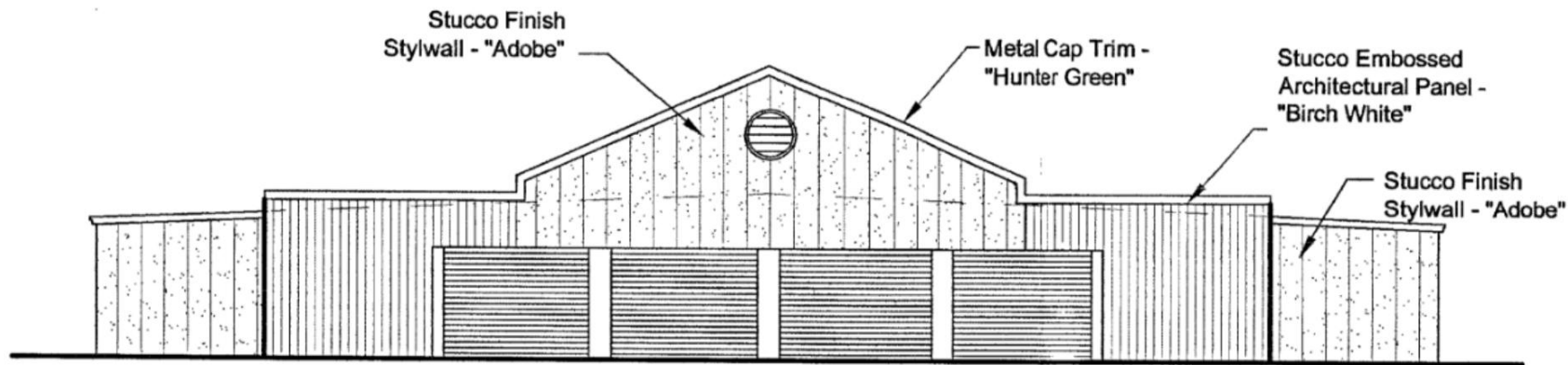




**LEE'S SUMMIT**  
MISSOURI®

**Jefferson Street Storage – 1603 SW Jefferson St.**  
**Special Use Permit**  
**PL2025-192**



# Project Request

Proposed special use permit renewal to allow the continued operation of the mini-warehouse facility.

Applicants requests approval for 10 years.





# Area/Zoning Map

1650 SW Market St.  
(zoned PI)

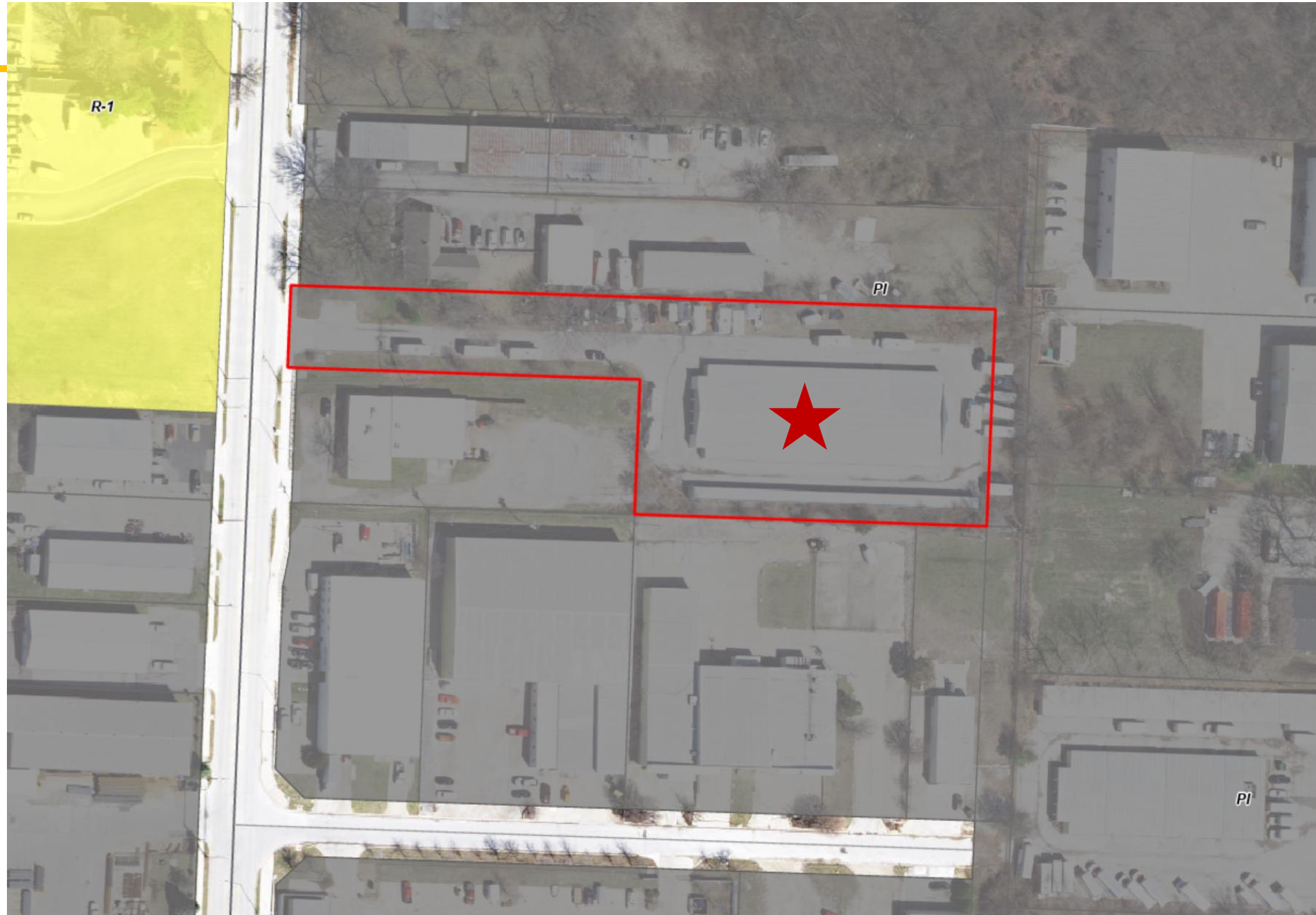
Adjacent Zoning:

North – PI

South – PI

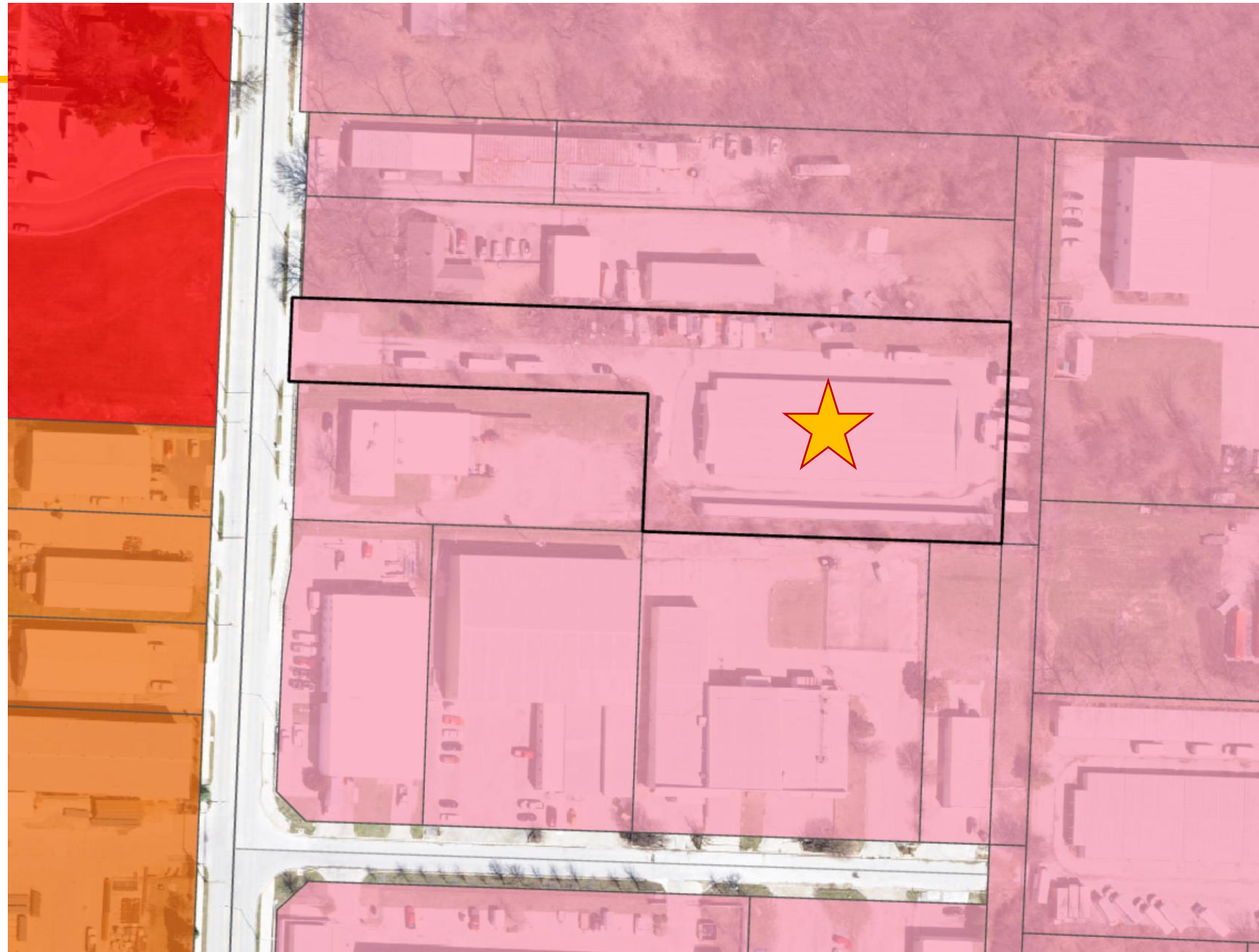
East – PI

West – R-1 & PI



# Ignite! Land Use Map

- Activity Center Downtown
- Activity Center New Longview
- Activity Center North PRI
- Activity Center South PRI
- Activity Center Summit
- Airport
- Civic
- Commercial
- Industrial
- Infrastructure
- Mixed Use
- Office
- Parks/Open Space
- Residential 1
- Residential 2
- Residential 3
- Water Bodies





# Project Information

Specification	Proposed
Existing Zoning	PI
Building Size	19,200-sf.
FAR	0.25
Parking	2 stalls*

\*Per the approved PDP (Appl. #2005-063)

A neighborhood meeting was held on August 28, 2025. Zero (0) members of the public attended.



# Approval Conditions

---

1. The special use permit shall be granted for a period of ten (10) years, two (2) months, and twenty-six (26) days, to expire on January 13, 2036.
2. All parking and storage shall occur only on a paved surface.
3. All driveway and parking lot repairs shall be completed by August 28, 2026.



**LEE'S SUMMIT**  
MISSOURI®

**Jefferson Street Storage – 1603 SW Jefferson St.**  
**Special Use Permit**  
**PL2025-192**

