

6 SITE DESIGN: CONNECTIVITY

22

Paragon Star utilizes a variety of strategies to unify the different uses and development typologies within the project. Multi-modal streetscapes play an important role in creating this cohesive character (shown on the previous pages and on the diagram at right) as do landscape strategies and site design elements.



Light fixtures at the pedestrian and vehicular scales will be coordinated across the project to maintain consistency and continuity.



Site furnishing elements like bike racks will be coordinated across the project to maintain consistency and continuity.

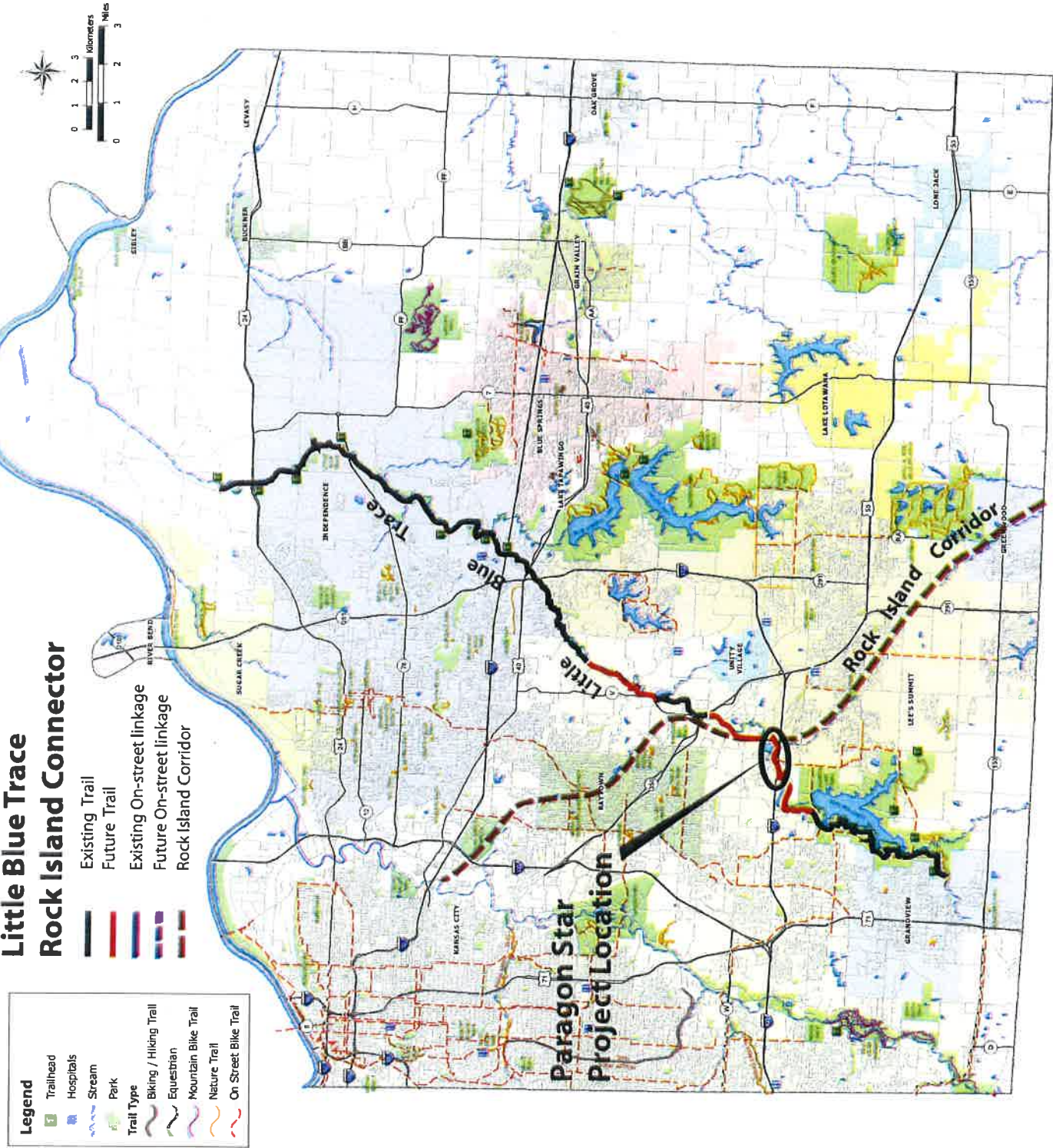


Paragon Star will have a comprehensive signage and wayfinding strategy that encompasses the entire development.



- Bicycle + Pedestrian Shared Paths
- Bicycle + Vehicular Shared Paths
- Vehicular Paths
- - - Future shared Little Blue Trail

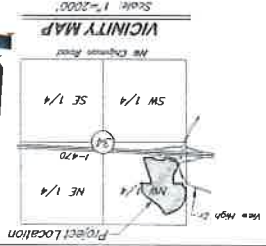
Exhibit B





No.	Date	Description

NOT FOR CONSTRUCTION



Preliminary Development Plan Boundary Description:
All of Lots 1, 2 and 4, CIVILIAN COMMERCIAL CENTER, a subdivision of land in the Southwest 1/4 of the Northwest 1/4 of Section 24, Township 48, Range 32, in Lee's Summit, Jackson County, Missouri.

Prepared and Submitted By:

George Butler Associates, Inc.
9801 Kanter Boulevard Lenexa, Kansas 66215
Phone: 913-493-0400 Fax: 913-577-8312
Contact: Brad Burton, P.E.
Email: bradburton@gbacom.com

Note: Building setbacks shown as minimum distance from building to particular property. Fencing set-backs shown as minimum distance from parking to adjacent lot line.

Lot	Area	Building Setback to Fenceline/Fence	Parking Setback
Lot 9	1.00 Ac.	20 Ft.	N/A
Lot 10	0.47 Ac.	20 Ft.	N/A
Lot 11	0.20 Ac.	20 Ft.	N/A
Lot 12	0.24 Ac.	20 Ft.	N/A
Lot 13	1.32 Ac.	N/A	N/A
Lot 14	2.82 Ac.	N/A	N/A
Lot 16	2.59 Ac.	N/A	N/A
Lot 15	0.37 Ac.	10 Ft.	0 Ft.
Lot 17	1.94 Ac.	0 Ft.	0 Ft.
Lot 18	2.16 Ac.	0 Ft.	0 Ft.
Lot 19	1.83 Ac.	20 Ft.	0 Ft.
Lot 20	0.22 Ac.	5 Ft.	2 Ft.
Tract C	0.30 Ac.	N/A	N/A

