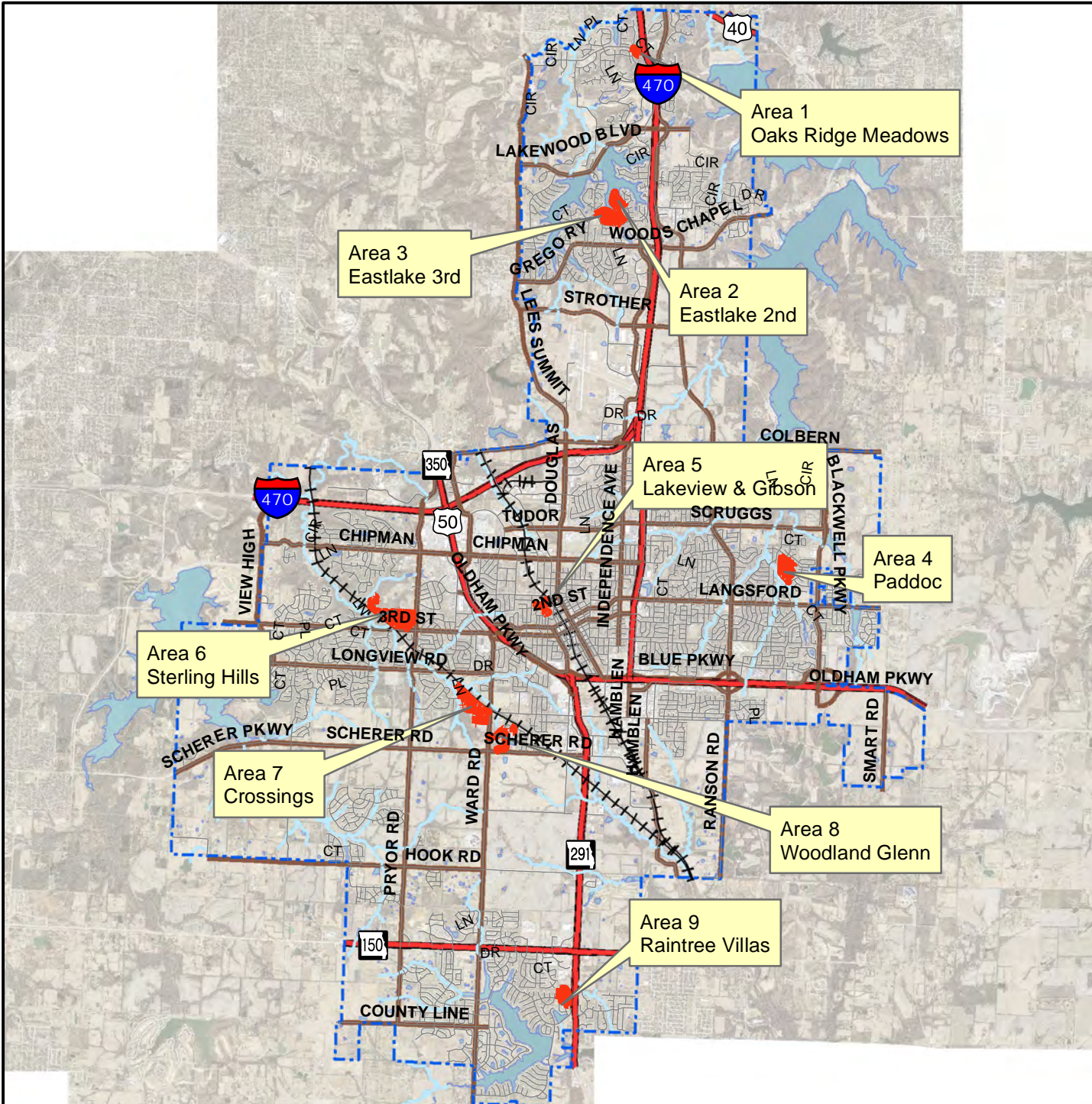


**Curb Repair 20/21**

		Curb LF	Ramps EA			Sidewalk SF	Driveway Residential SF
			A	B	M		
Area 1	Lake Ridge Meadows	2,305	2	0	0	160	92
Area 2	East Lake 2nd	3,980	3	3	3	1,200	159
Area 3	East Lake 3rd	6,280	5	2	5	1,520	251
Area 4	Paddoc	10,140	1	0	8	1,360	406
Area 5	Lakeview & Gibson	3,880	3	3	7	1,840	155
Area 6	Sterling Hills	22,100	14	2	24	5,280	884
Area 7	Crossings	15,460	9	1	14	3,120	618
Area 8	Woodland Glenn	10,030	2	0	0	160	401
Area 9	Raintree Villas	7,370	0	0	12	1,920	295
		<b>81,545</b>	<b>39</b>	<b>11</b>	<b>73</b>	<b>16,560</b>	<b>3,262</b>

# City of Lee's Summit Curb Repair 20/21 Project No. 324-20/21(curb)

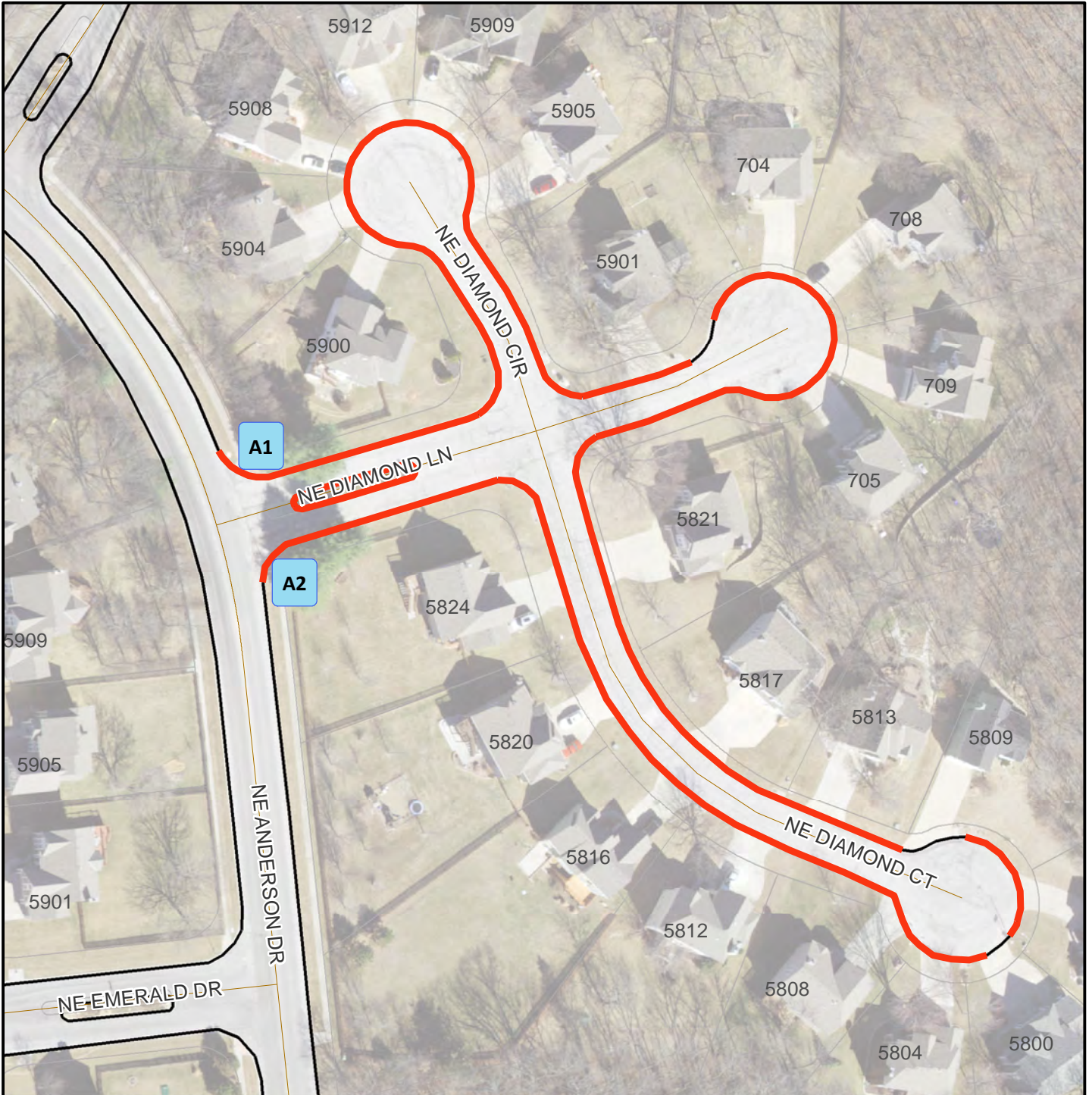


— Curb Replacement

Curb Repair 20/21  
Overview



# City of Lee's Summit Curb Repair 20/21 Project No. 324-20/21(curb)



— Curb Replacement

A# Type A Sidewalk Ramp

B# Type B Sidewalk Ramp

M# Type M Sidewalk Ramp

Area - 01  
Oaks Ridge Meadows



# City of Lee's Summit

## Curb Repair 20/21 Project No. 324-20/21(curb)



— Curb Replacement

A# Type A Sidewalk Ramp

B# Type B Sidewalk Ramp

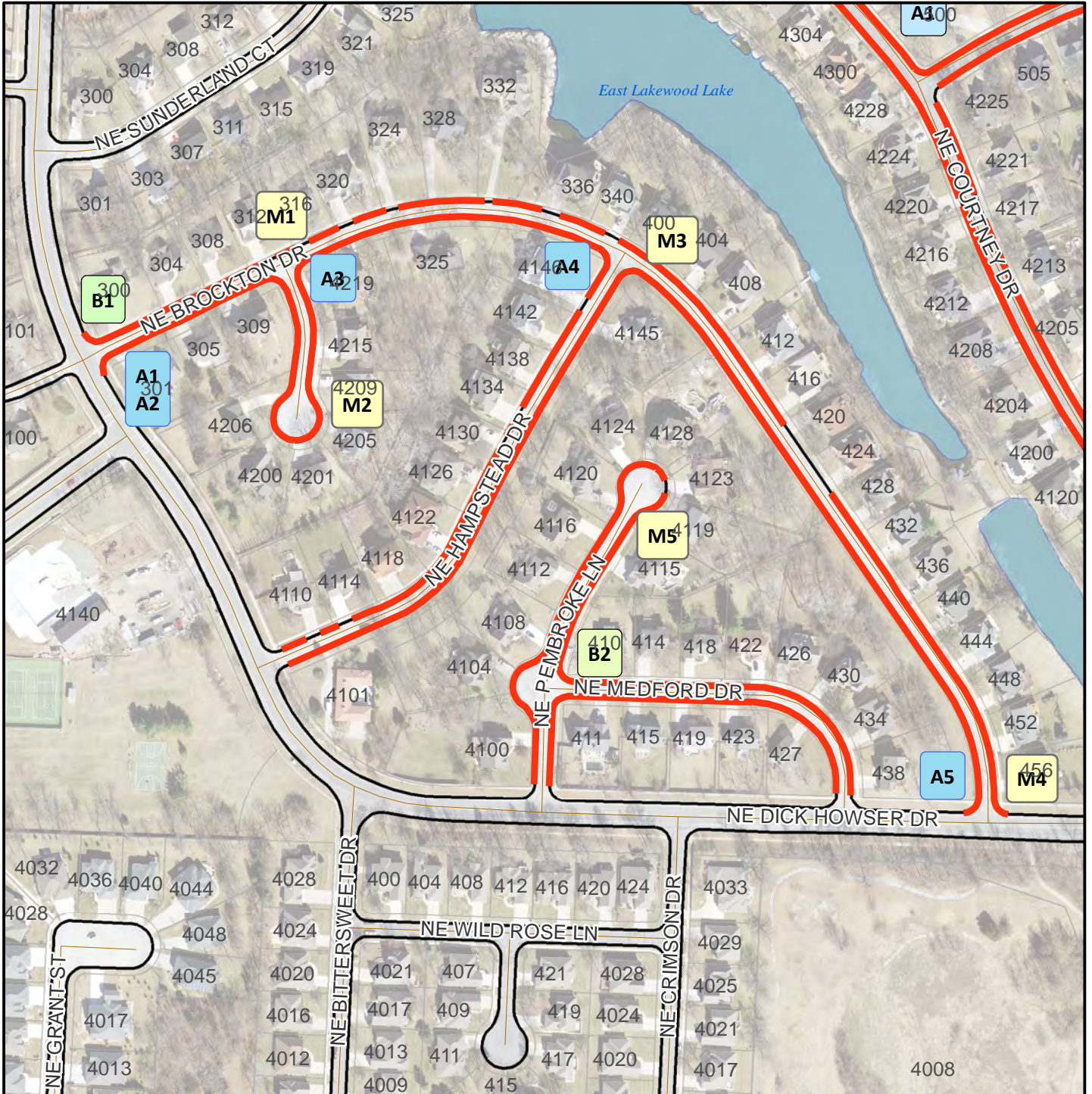
M# Type M Sidewalk Ramp

Area - 02  
Eastlake 2nd



# City of Lee's Summit

## Curb Repair 20/21 Project No. 324-20/21(curb)



— Curb Replacement

A# Type A Sidewalk Ramp

B# Type B Sidewalk Ramp

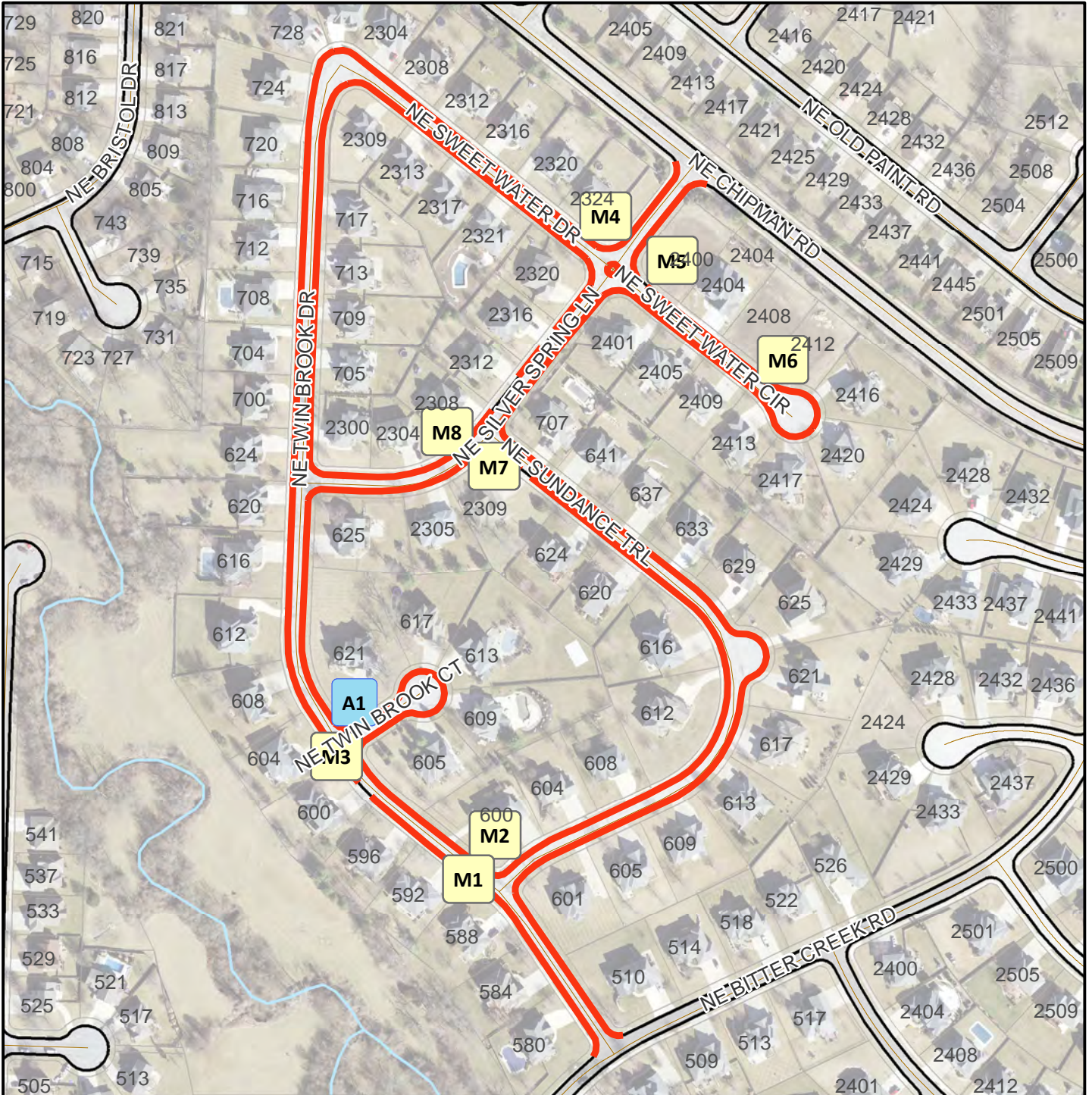
M# Type M Sidewalk Ramp

Area - 03  
Eastlake 3rd



# City of Lee's Summit

## Curb Repair 20/21 Project No. 324-20/21(curb)



Curb Replacement

A# Type A Sidewalk Ramp

B# Type B Sidewalk Ramp

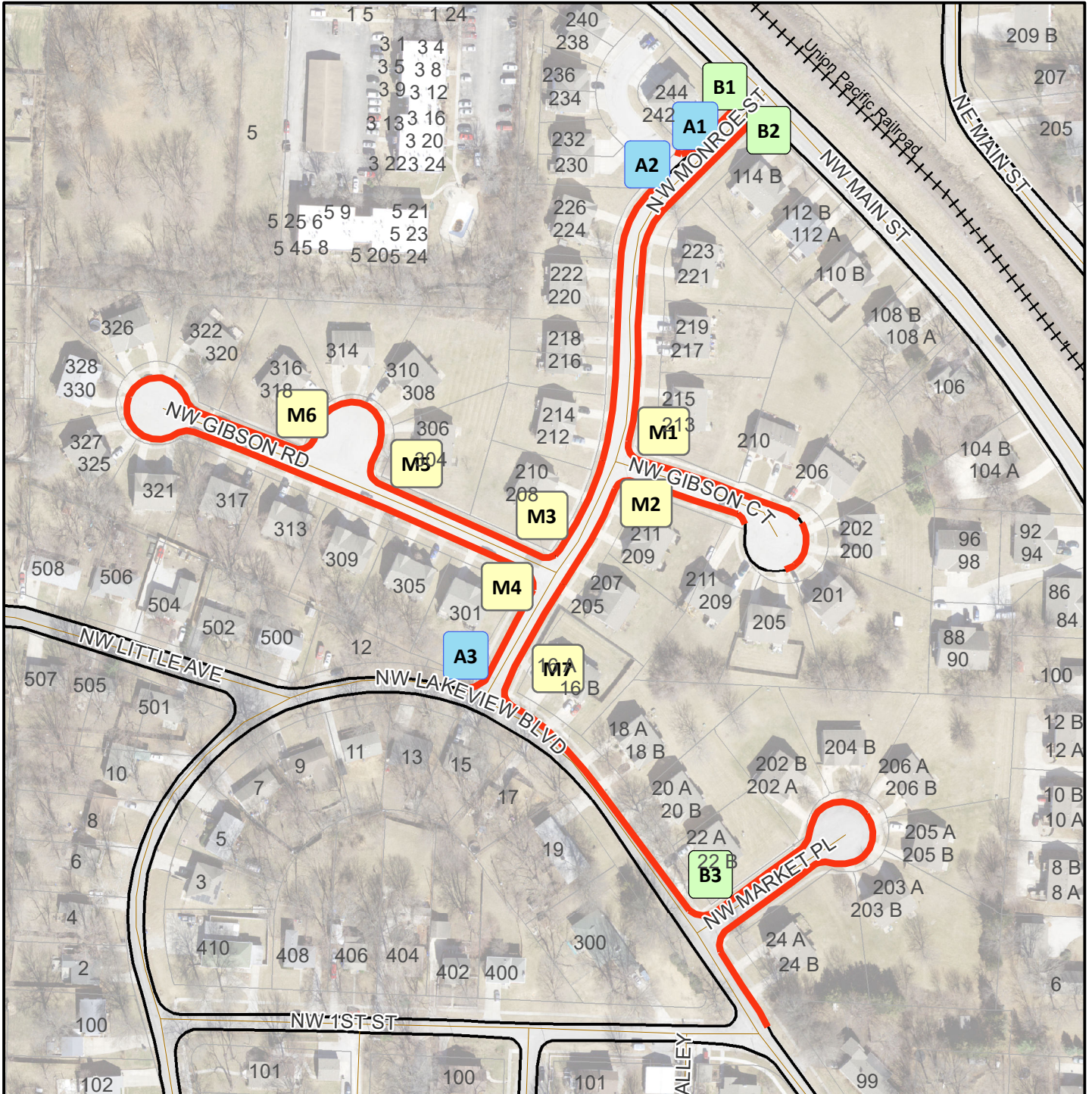
M# Type M Sidewalk Ramp

Area - 04  
Paddoc



# City of Lee's Summit

## Curb Repair 20/21 Project No. 324-20/21(curb)



— Curb Replacement

A# Type A Sidewalk Ramp

B# Type B Sidewalk Ramp

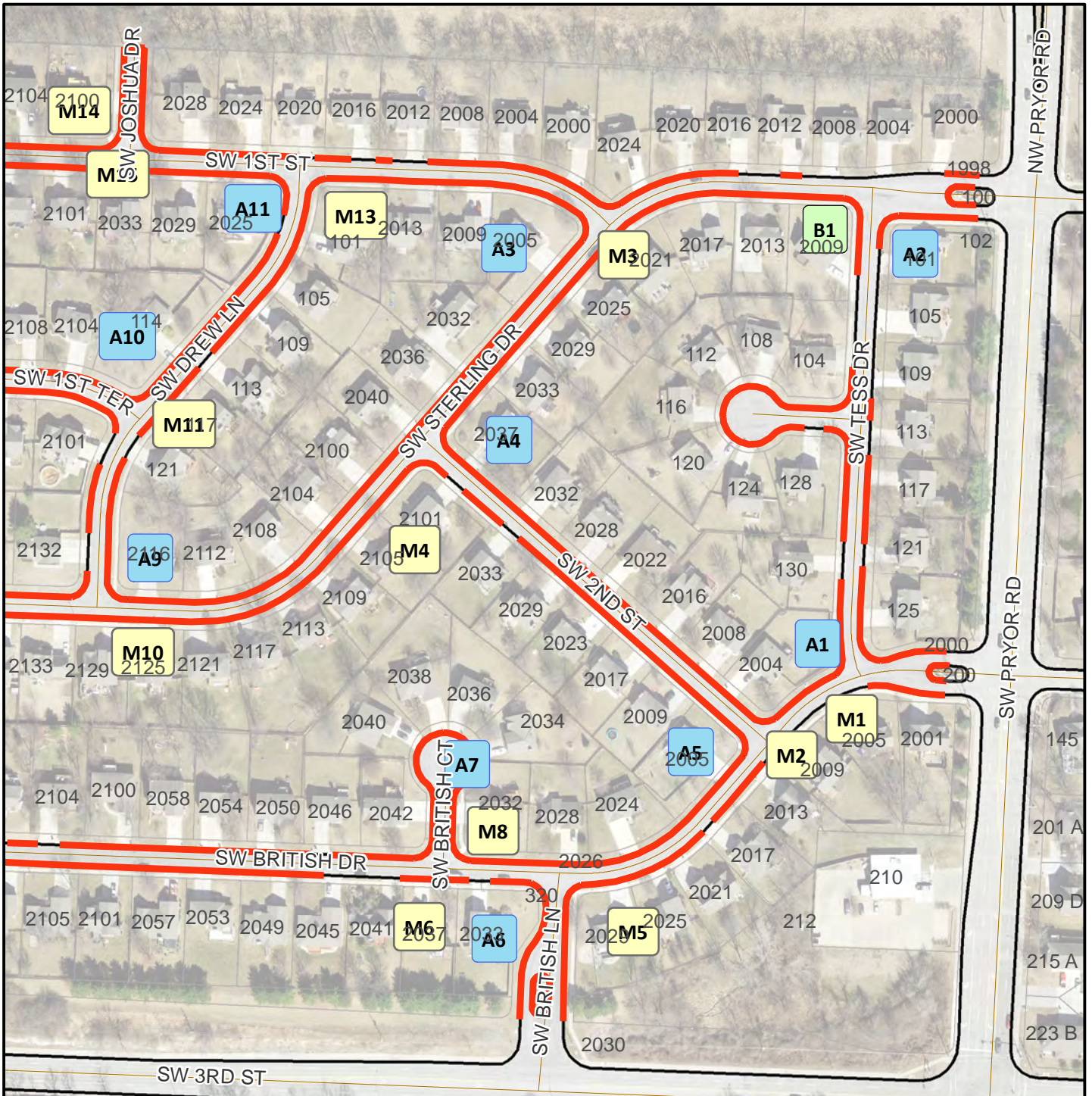
M# Type M Sidewalk Ramp

Area - 05  
Lakeview & Gibson



# City of Lee's Summit

## Curb Repair 20/21 Project No. 324-20/21(curb)



— Curb Replacement

**A#** Type A Sidewalk Ramp

**B#** Type B Sidewalk Ramp

**M#** Type M Sidewalk Ramp

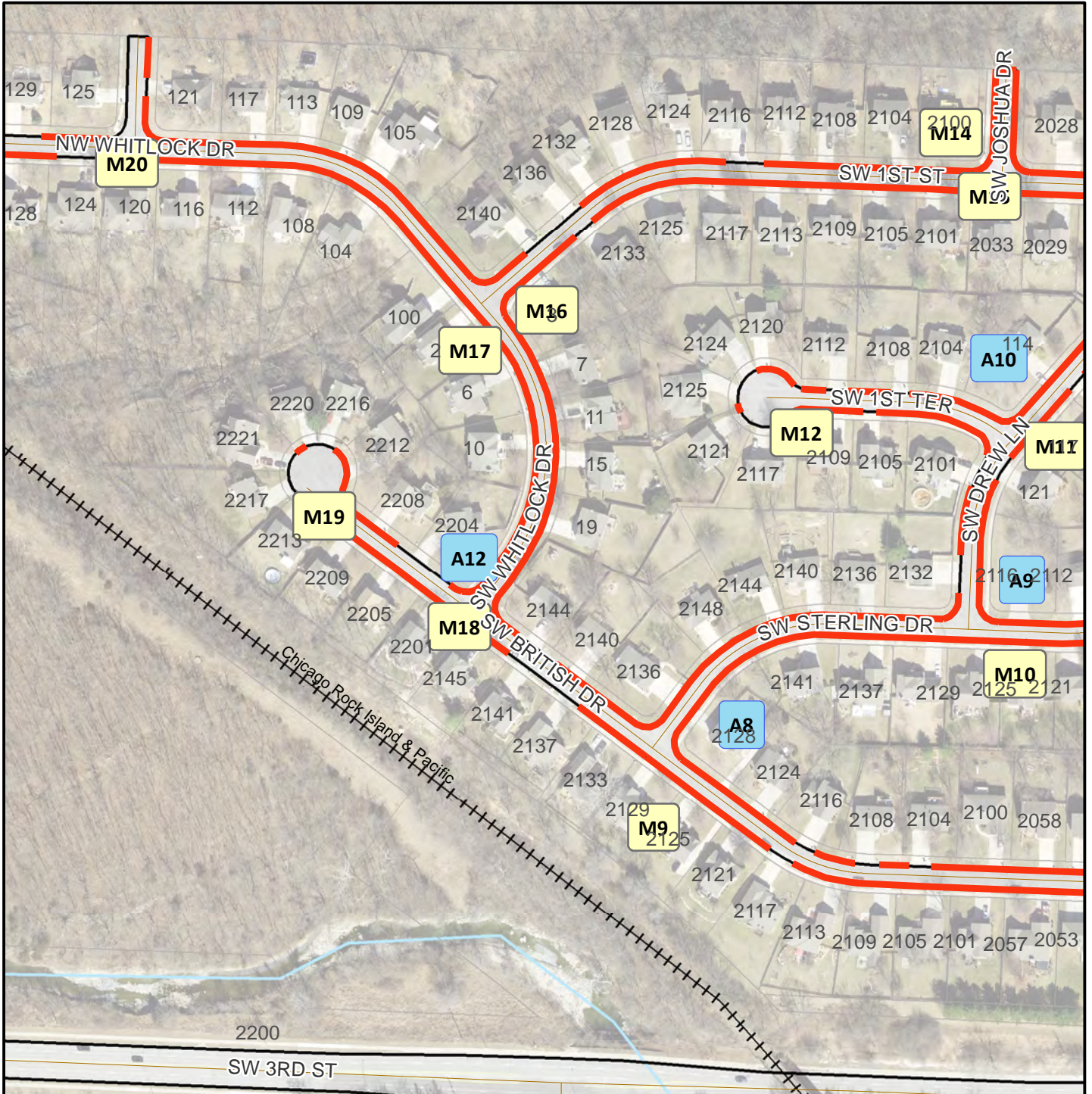
Area - 06a  
Sterling Hills





# City of Lee's Summit

## Curb Repair 20/21 Project No. 324-20/21(curb)



— Curb Replacement

A# Type A Sidewalk Ramp

B# Type B Sidewalk Ramp

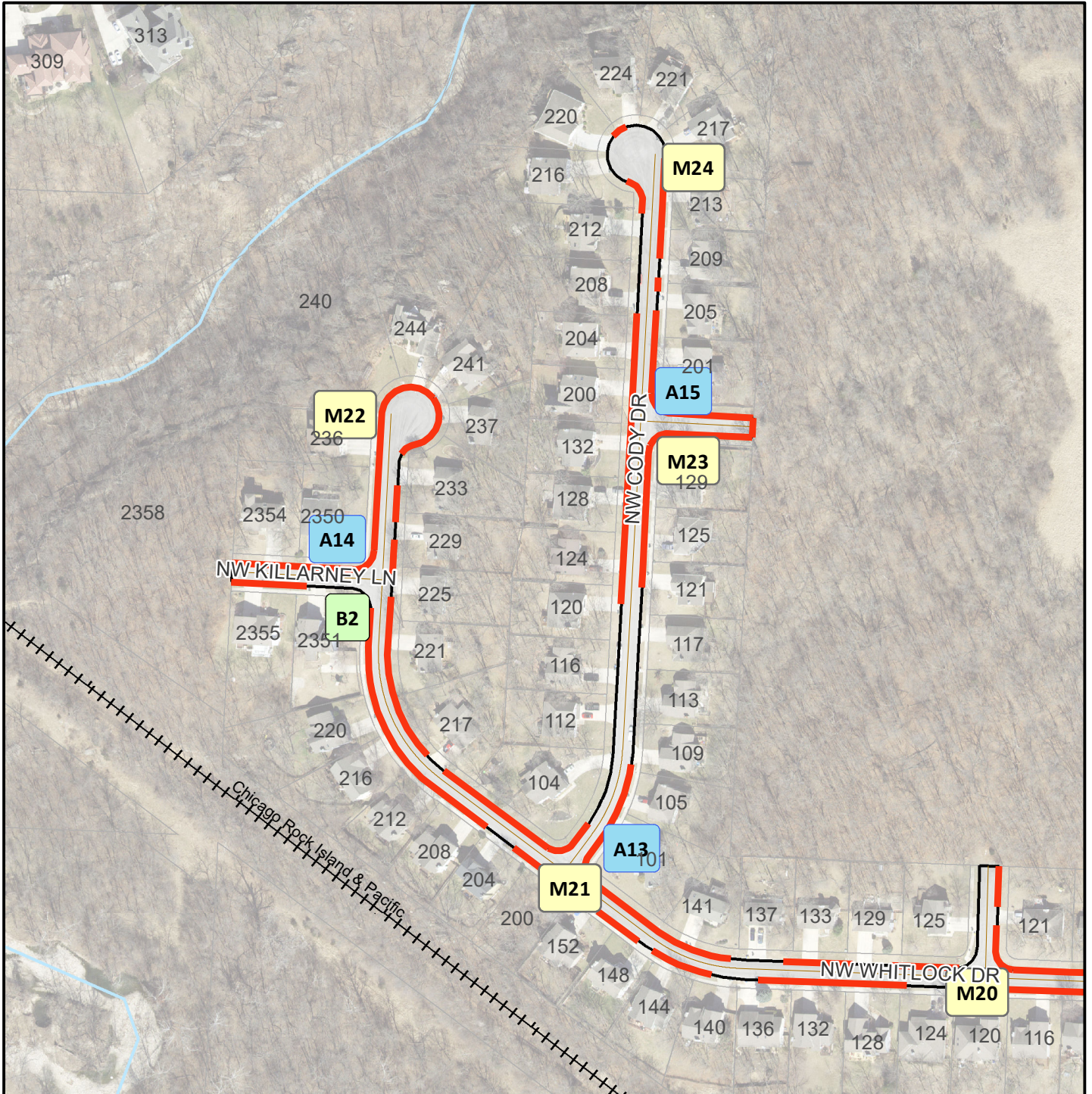
M# Type M Sidewalk Ramp

Area - 06b  
Sterling Hills



# City of Lee's Summit

## Curb Repair 20/21 Project No. 324-20/21(curb)



— Curb Replacement

A# Type A Sidewalk Ramp

B# Type B Sidewalk Ramp

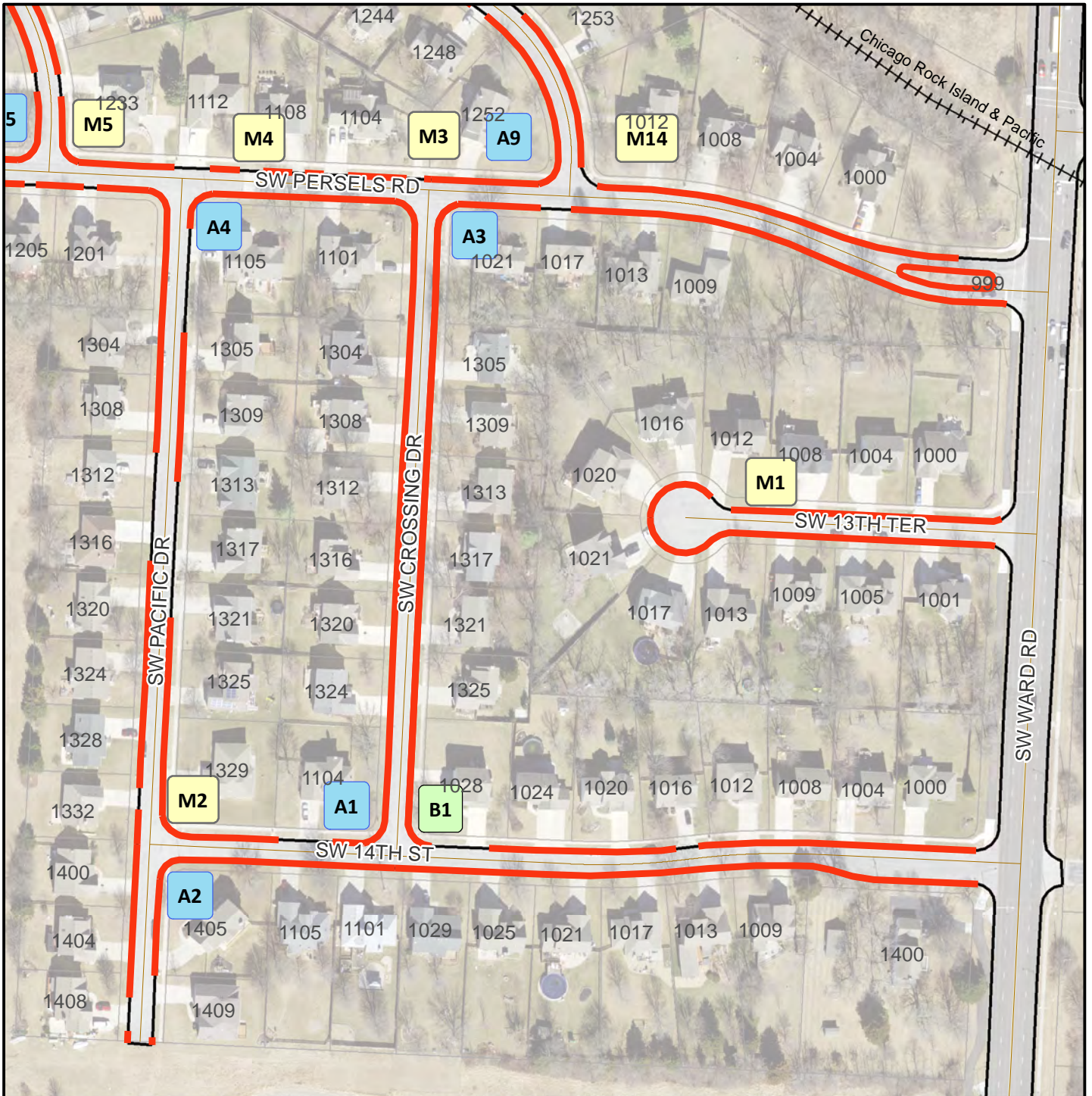
M# Type M Sidewalk Ramp

Area - 06c  
Sterling Hills



# City of Lee's Summit

## Curb Repair 20/21 Project No. 324-20/21(curb)



Area - 07a  
Crossings



— Curb Replacement

A# Type A Sidewalk Ramp

B# Type B Sidewalk Ramp

M# Type M Sidewalk Ramp

# City of Lee's Summit

## Curb Repair 20/21 Project No. 324-20/21(curb)



— Curb Replacement

A# Type A Sidewalk Ramp

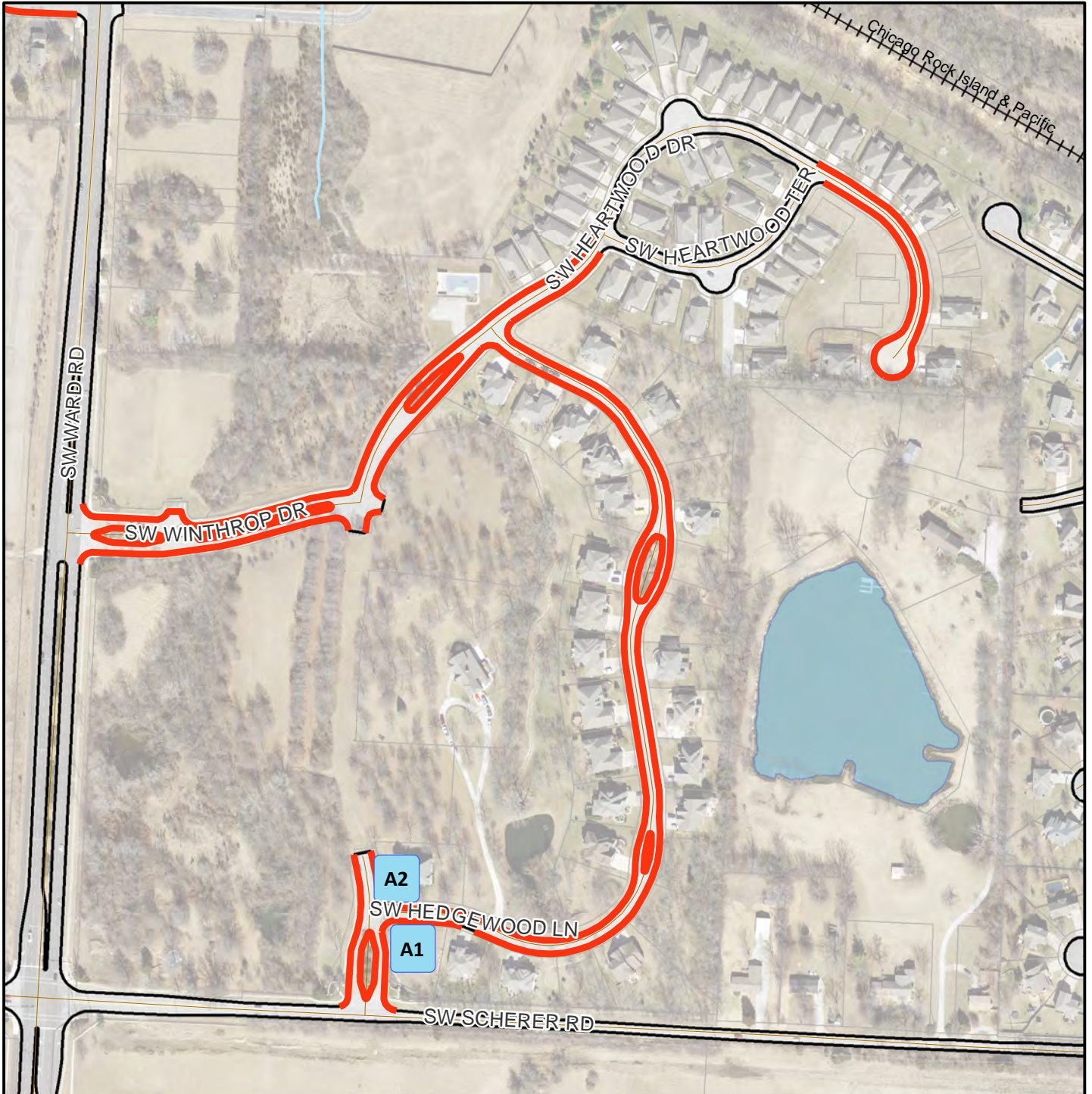
B# Type B Sidewalk Ramp

M# Type M Sidewalk Ramp

Area - 07b  
Crossings



# City of Lee's Summit Curb Repair 20/21 Project No. 324-20/21(curb)



Area - 08  
Woodland Glen



— Curb Replacement

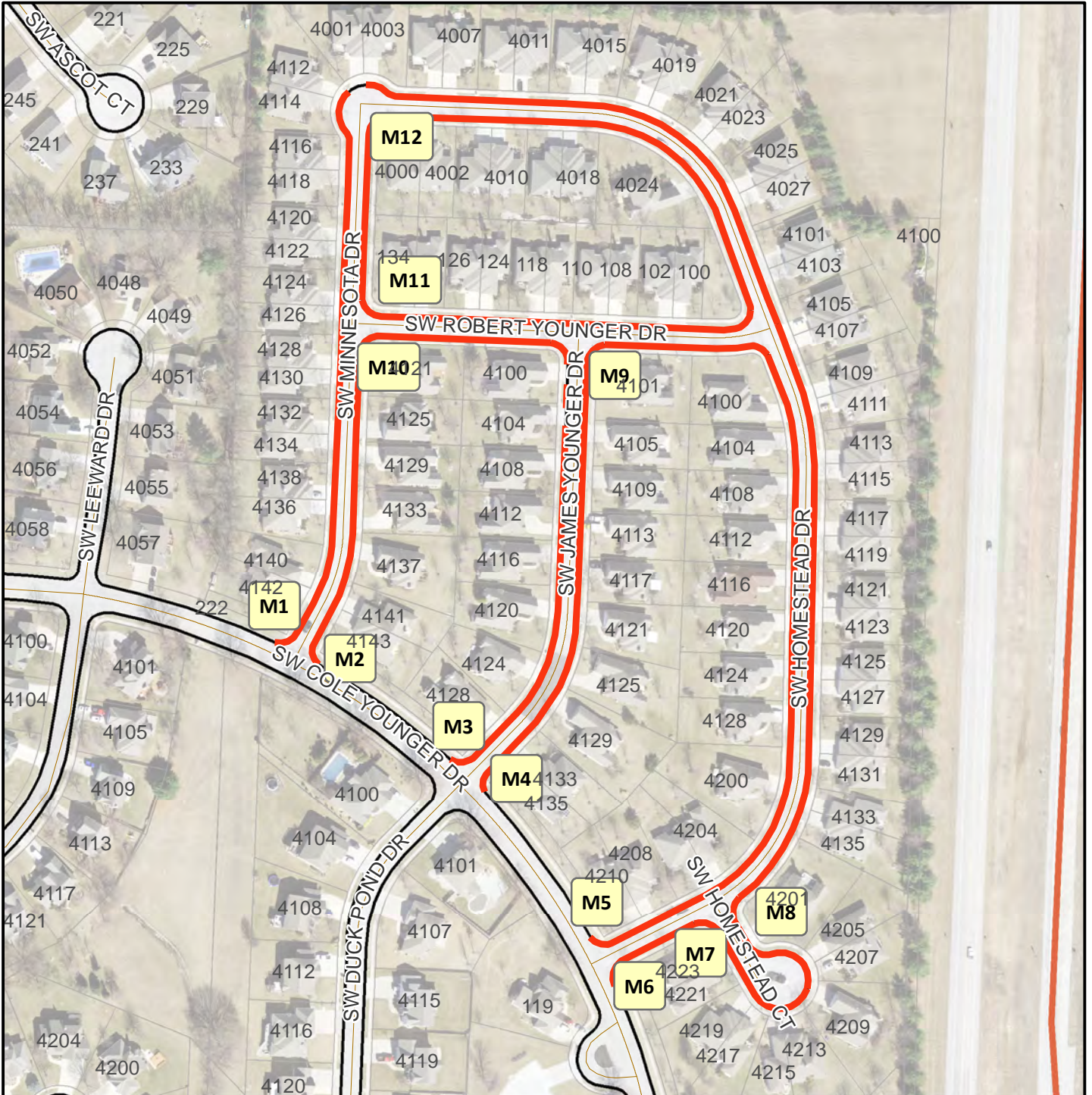
A# Type A Sidewalk Ramp

B# Type B Sidewalk Ramp

M# Type M Sidewalk Ramp

# City of Lee's Summit

## Curb Repair 20/21 Project No. 324-20/21(curb)



— Curb Replacement

A# Type A Sidewalk Ramp

B# Type B Sidewalk Ramp

M# Type M Sidewalk Ramp

Area - 09  
Raintree Villas

