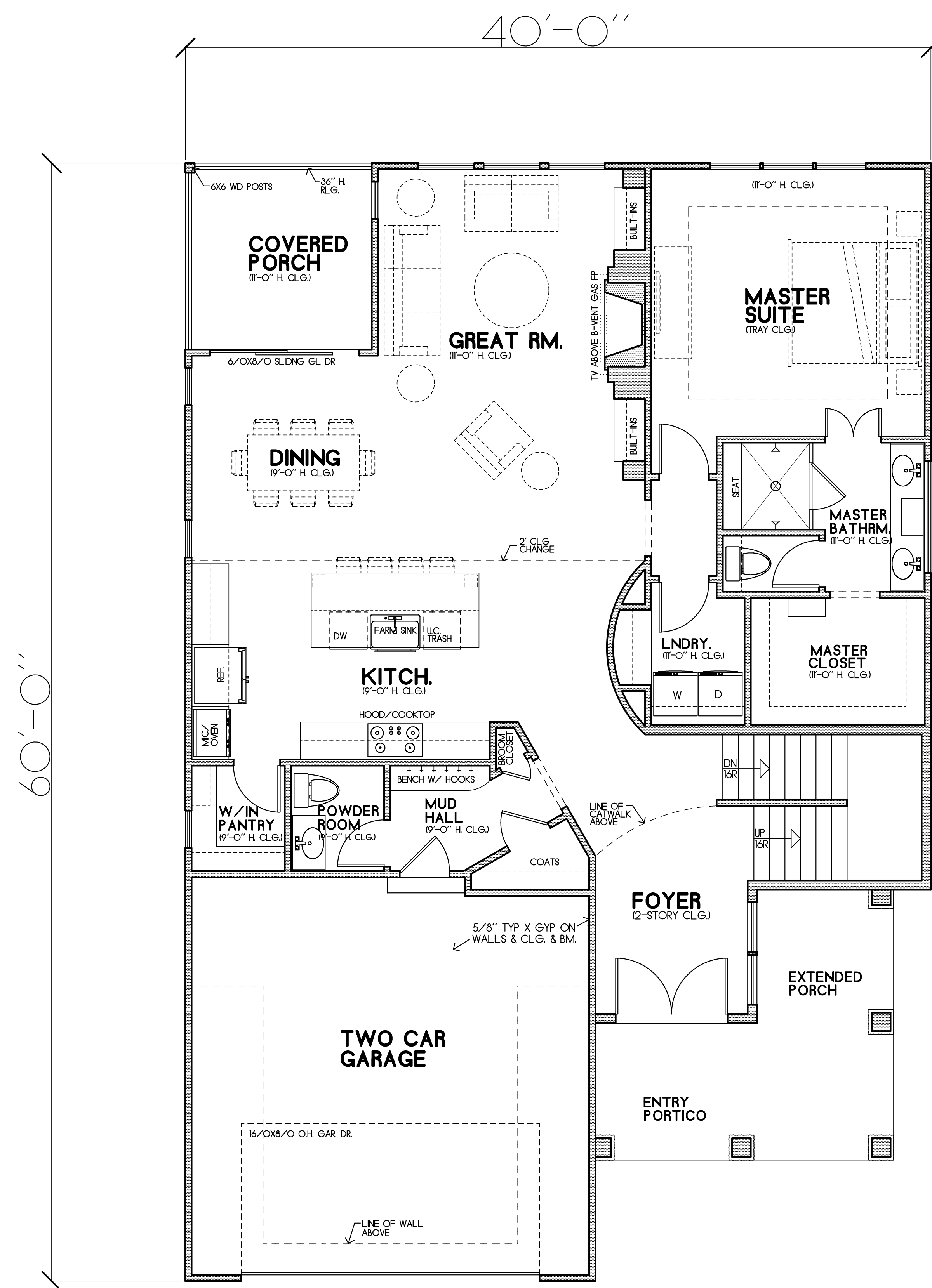
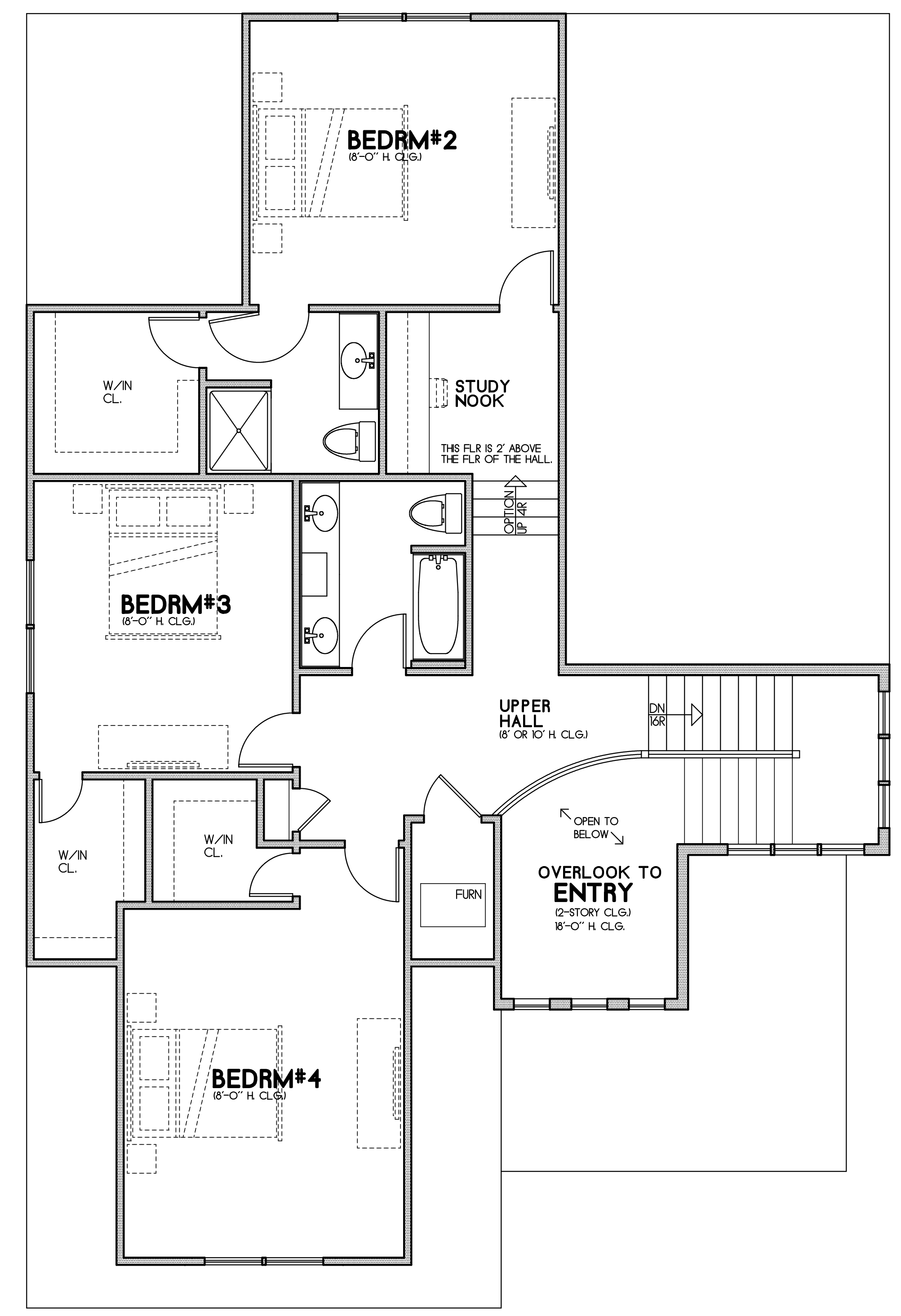


KANSAS CITY, MISSOURI  
C: (816) 686-5900  
O: (816) 984-2012

ANDERSON POINTE  
CAPITAL CONSTRUCTION SERVICES, LLC  
© COPYRIGHT KC ARCHITECTURE, 2021



MAIN FLOOR PLAN  
SCALE: 1/4"=1'-0"  
AREA= 1,498 SF



UPPER FLOOR PLAN  
SCALE: 1/4"=1'-0"  
AREA= 1,123 SF



STORY & HALF PLAN #1 GOES WITH THIS ELEVATION SET "A"



**KC Architecture**  
KANSAS CITY, MISSOURI  
C: (816) 686-5900  
O: (816) 984-2012

**ANDERSON POINTE**  
CAPITAL CONSTRUCTION SERVICES, LLC  
© COPYRIGHT KC ARCHITECTURE, 2021