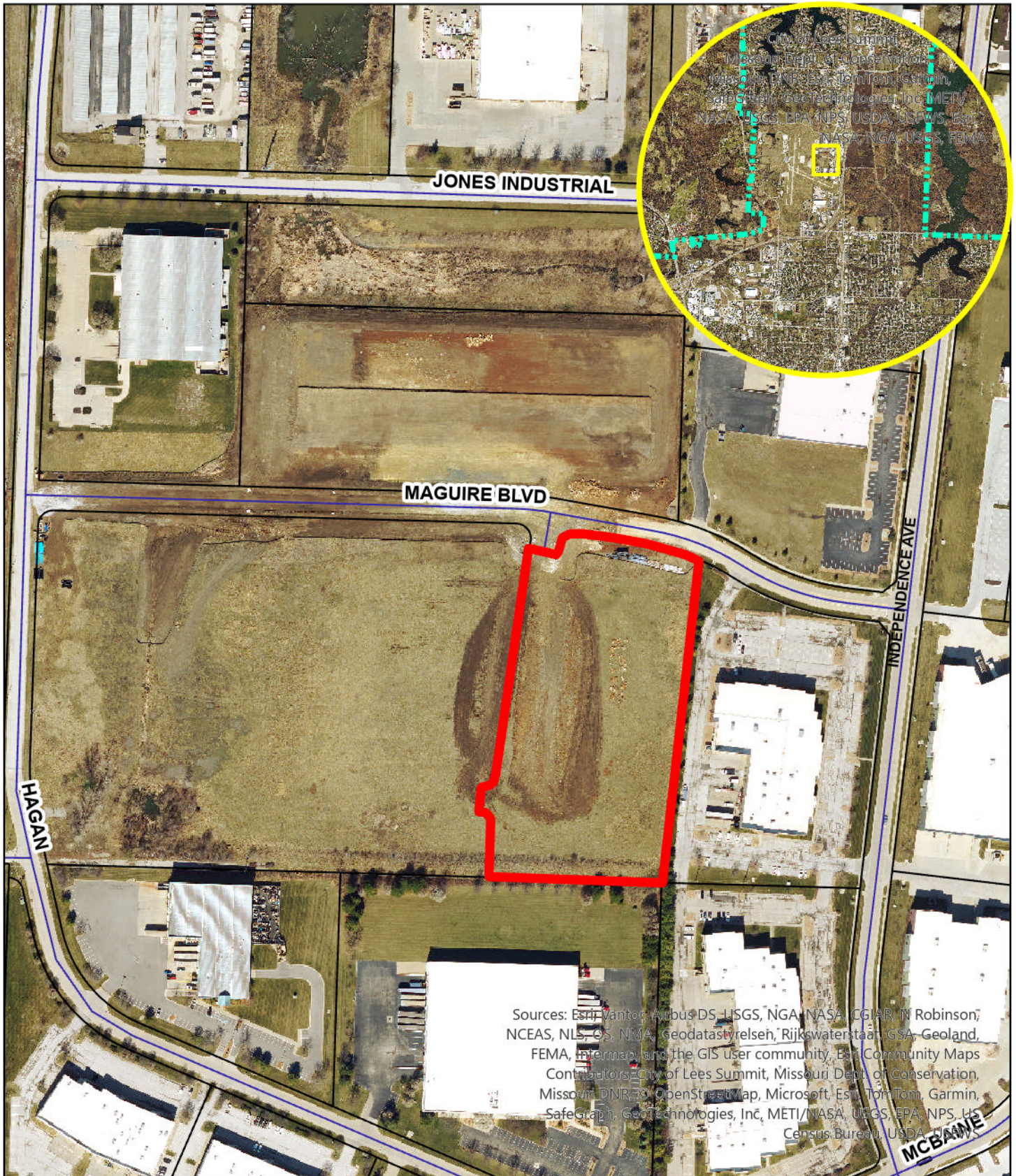


Appl. #PL2026-034 FINAL PLAT Lakewood Business Park, Lot 47



Sources: Esri, Vantor, Airbus DS, USGS, NGA, NASA, CGIAR, N Robinson, NCEAS, NLS, OS, NMA, Geodatastore.nl, Rijkswaterstaat, GSA, Geoland, FEMA, Intermap, and the GIS user community, Esri Community Maps Contractors, City of Lees Summit, Missouri Dept. of Conservation, Missouri DNR, OpenStreetMap, Microsoft, Esri, TomTom, Garmin, SafeGraph, GeoTechnologies, Inc, METI/NASA, USGS, EPA, NPS, US Census Bureau, USDA

0 0.05 0.1 0.2 Miles

