



# City of Lee's Summit Planning Commission

Customer Vacuum Addition  
950 NW Chipman Road

*June 12, 2025*

# BLUE BEACON, INC.



## LIGHTHOUSE PROPERTIES HOTELS



## BLUE BEACON TRUCK WASHES



## CHARLIE'S CAR WASHES





TM

# Charlie's Car Wash Current Locations



KC Metro = 7

Topeka = 1

Wichita = 3

OK City = 2



# Charlie's Car Wash

## Lee's Summit

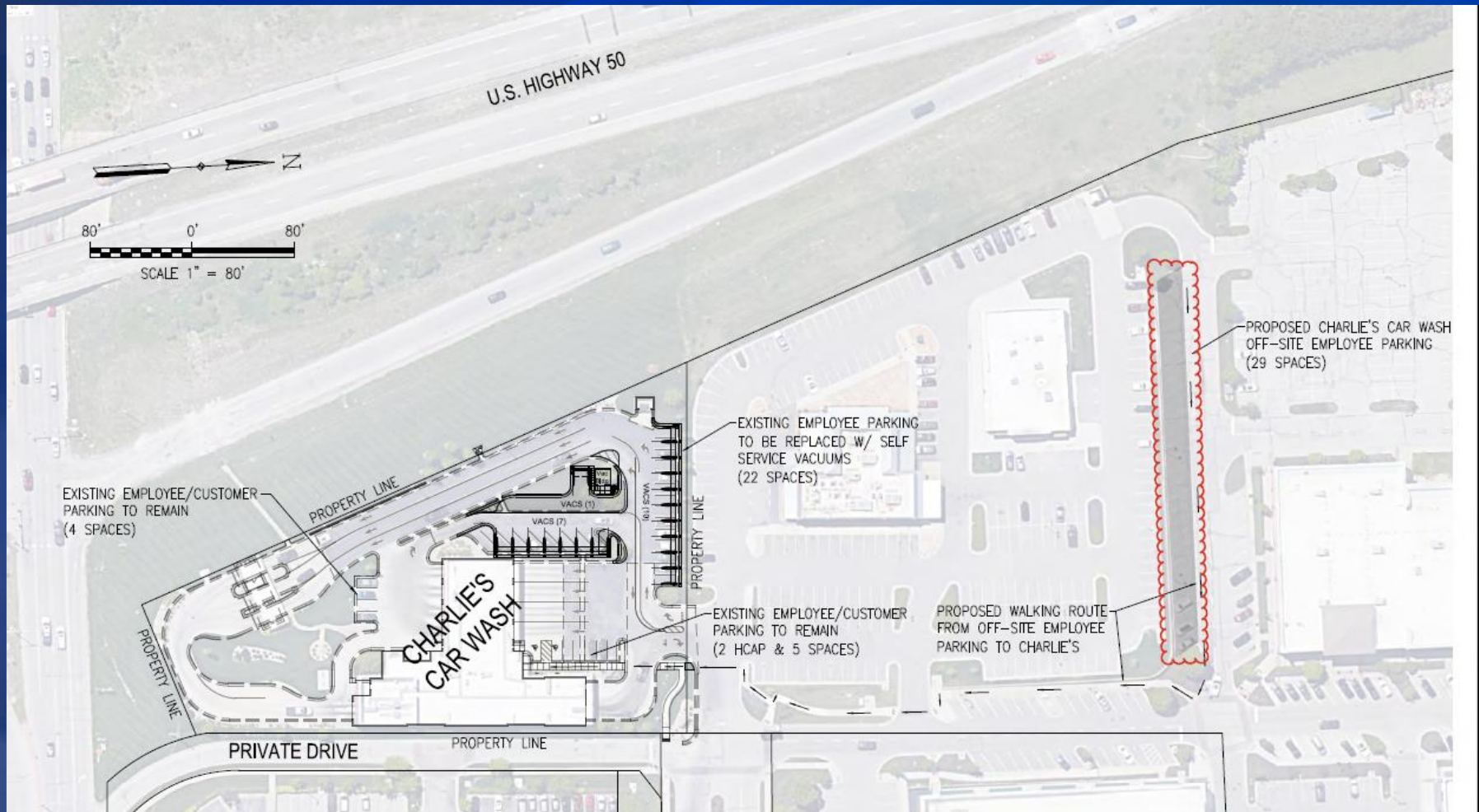


# Charlie's Car Wash

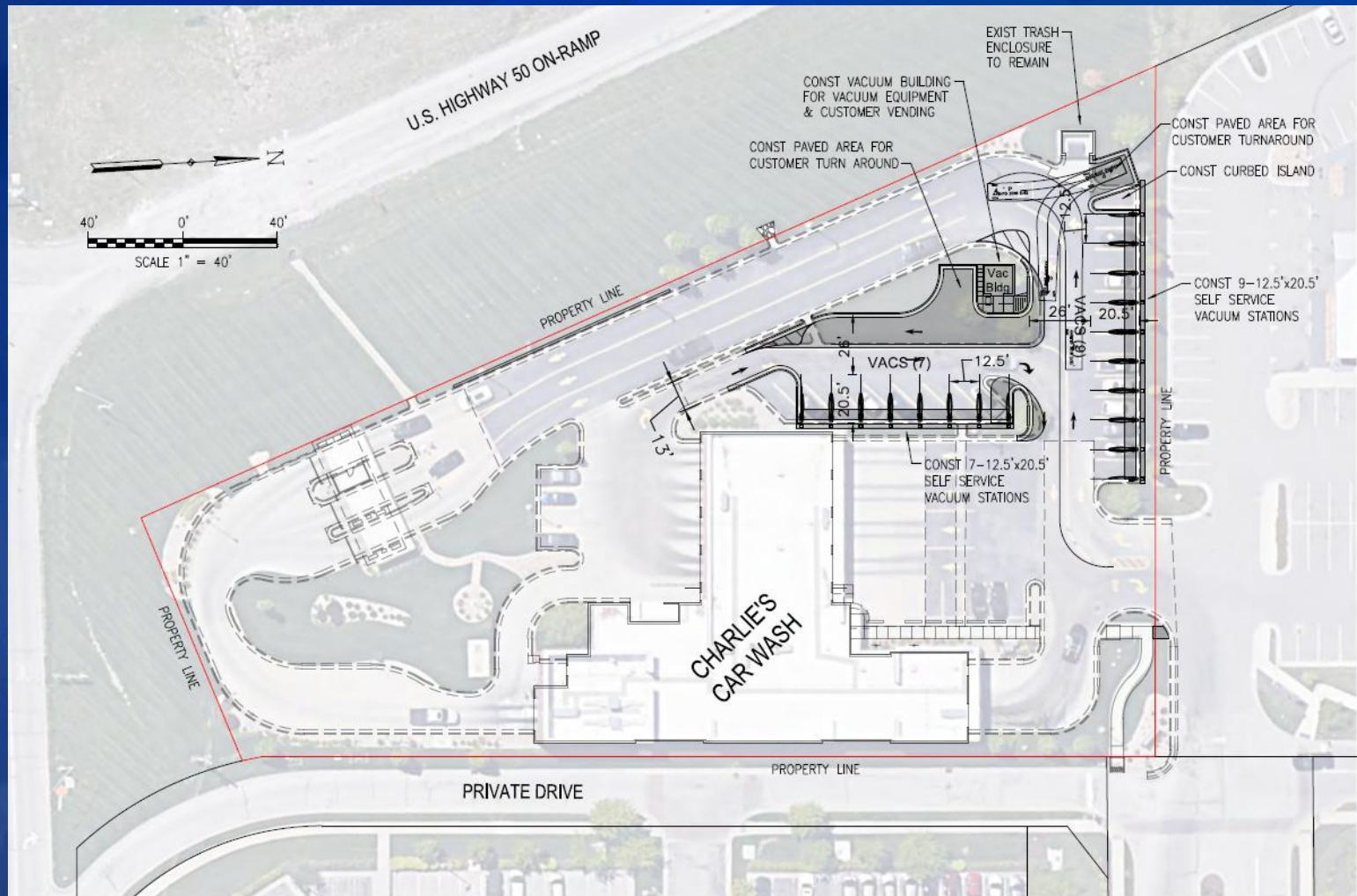
## Lee's Summit

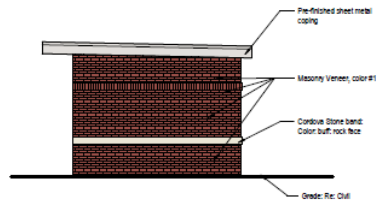


# Charlie's Car Wash Proposed Parking Area

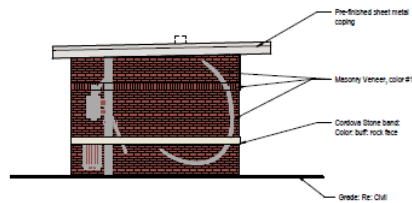


# Charlie's Car Wash Proposed Site Plan

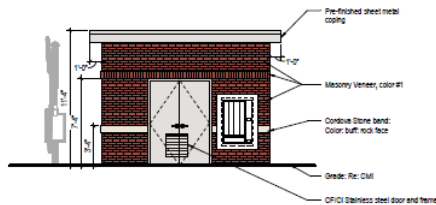




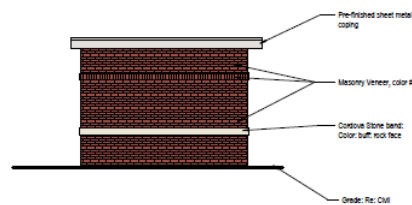
3	Vacuum North Elevation
A102	1/4" = 1'-0"



4	Vacuum South Elevation
A102	1/4" = 1'-0"



1	Vacumm East Elevation
A102	1/4" = 1'-0"



2	Vacuum West Elevation
A102	1/4" = 1'-0"



Modular Brick: Face Brick  
(#1) Color: Crimson



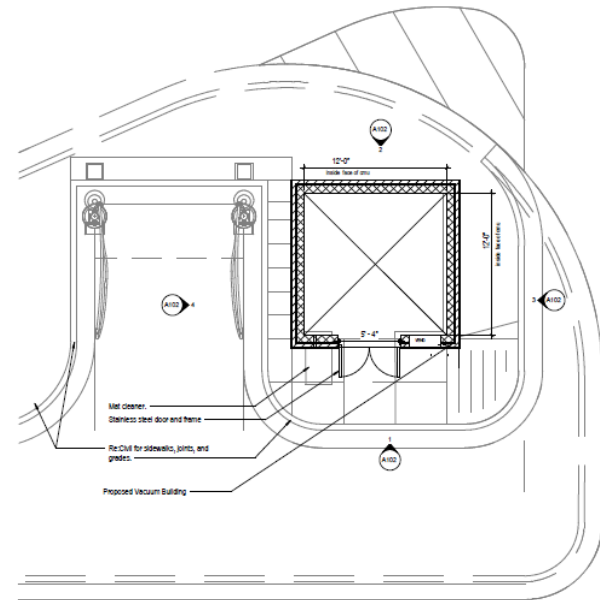
**Metal Coping:**  
Color Silver Metallic and Clear Anodize  
Aluminum



Cordova Stone: Sills and Lintels:  
Color: Buff; rock face

### Exterior Materials

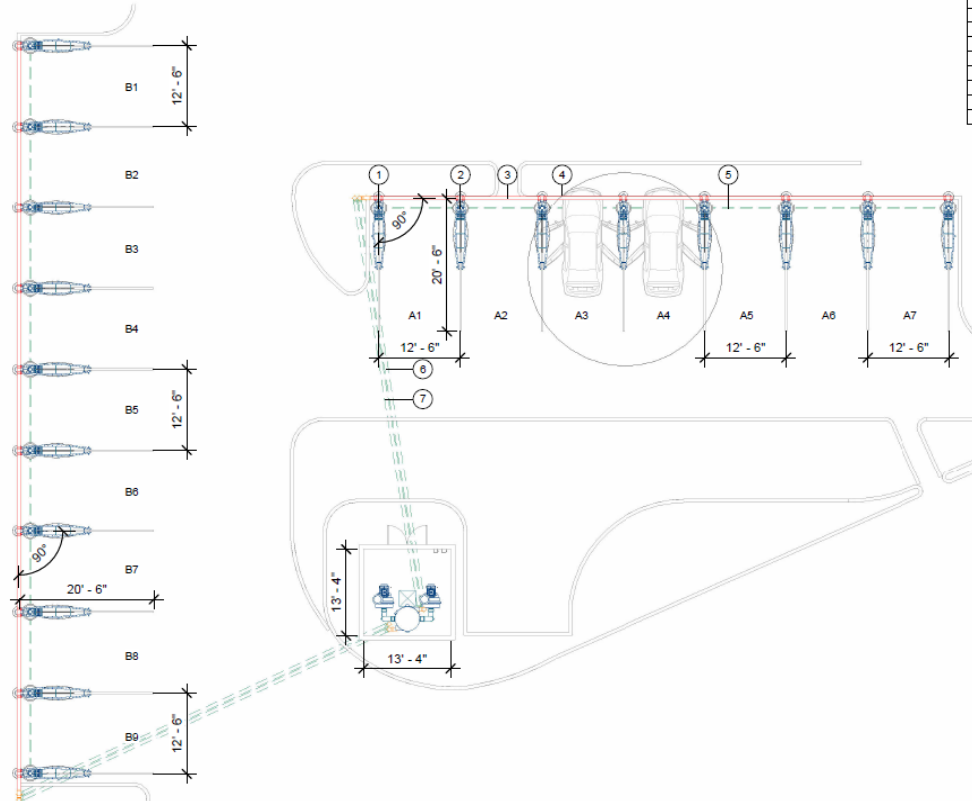
**Exterior Materials**  
**Module Brick:** Face Brick (#1) color: Acme, Crimson, velvet texture to match Car Wash building  
**Prefinished metal roofing and fascia:** Firestone, Silver Metallic  
**Cordova Stone:** silt and lints Color: Buff, rock face to match Car Wash building  
**Door and Frame:** Stainless with Satin finish



A	Vacuum Building Plan
	1/4" = 1'-0"

# Charlie's Car Wash Vacuum Site Plan

\*THIS DRAWING IS PRELIMINARY AND NOT TO BE USED FOR CONSTRUCTION\*



## SITE PLAN

ITEM	DESCRIPTION
1	SINGLE USER UMBRELLA ARCH AT ENDS OF VACUUM SPACES
2	DUAL USER UMBRELLA ARCH BETWEEN VACUUM SPACES
3	6" OVERHEAD ALUMINUM VACUUM TUBE
4	15' HOSE REACH
5	BURIED COMPRESSED AIR LINE (BY OTHERS)
6	6" SCH. 40 SOLID CORE PVC BURIED PRIMARY VACUUM PIPE (BY OTHERS)
7	6" SCH. 40 SOLID CORE PVC BURIED BACK-UP VACUUM PIPE (BY OTHERS)

## VACUUM AREA A

QTY	ITEM
2	SINGLE USER UMBRELLA ARCH
6	DUAL USER UMBRELLA ARCH
14	CREVICE VACUUM TOOL & HOLDER
14	1-1/2"x15' RAPIDLOCK HOSE
8	AIR NOZZLE & HOSE
8	17" MAT RACK W/ DOOR PROTECTION
8	30 GALLON WASTE RECEPTACLE
8	6" LED LIGHT
8	AIR TOOL HANGER

## VACUUM AREA B

QTY	ITEM
2	SINGLE USER UMBRELLA ARCH
6	DUAL USER UMBRELLA ARCH
18	CREVICE VACUUM TOOL & HOLDER
18	1-1/2"x15' RAPIDLOCK HOSE
10	AIR NOZZLE & HOSE
10	17" MAT RACK W/ DOOR PROTECTION
10	30 GALLON WASTE RECEPTACLE
10	6" LED LIGHT
10	AIR TOOL HANGER

## VACUUM EQUIPMENT

QTY	ITEM
2	40HP T4 DIRECT DRIVE PRODUCER
2	8" T4 INDOOR EXHAUST MUFFLER
1	45x60 FILTER SEPARATOR

1 SITE PLAN

THIS PRELIMINARY DRAWING IS THE PROPERTY OF VACUTECH AND IS NOT TO BE USED FOR CONSTRUCTION OR INSTALLATION WITHOUT WRITTEN CONSENT. WRITTEN CONSENT MAY NOT BE PROVIDED BY ANY PERSON, AGENCY, OR DEALER NOT AUTHORIZED BY VACUTECH.

**VACUTECH**

AN NCS COMPANY

1360 HI-TECH DRIVE  
SHERIDAN, WY 82801  
PHONE: (307) 675-1982  
EMAIL: vacinfo@ncsweb.com  
WEB: www.vacutec.com

**CHARLIE'S CAR WASH**

950 NORTH WEST CHIPMAN ROAD  
LEE'S SUMMIT, MISSOURI 64086

#	Revision	By	Chk	Date

**VACUUM SITE PLAN**

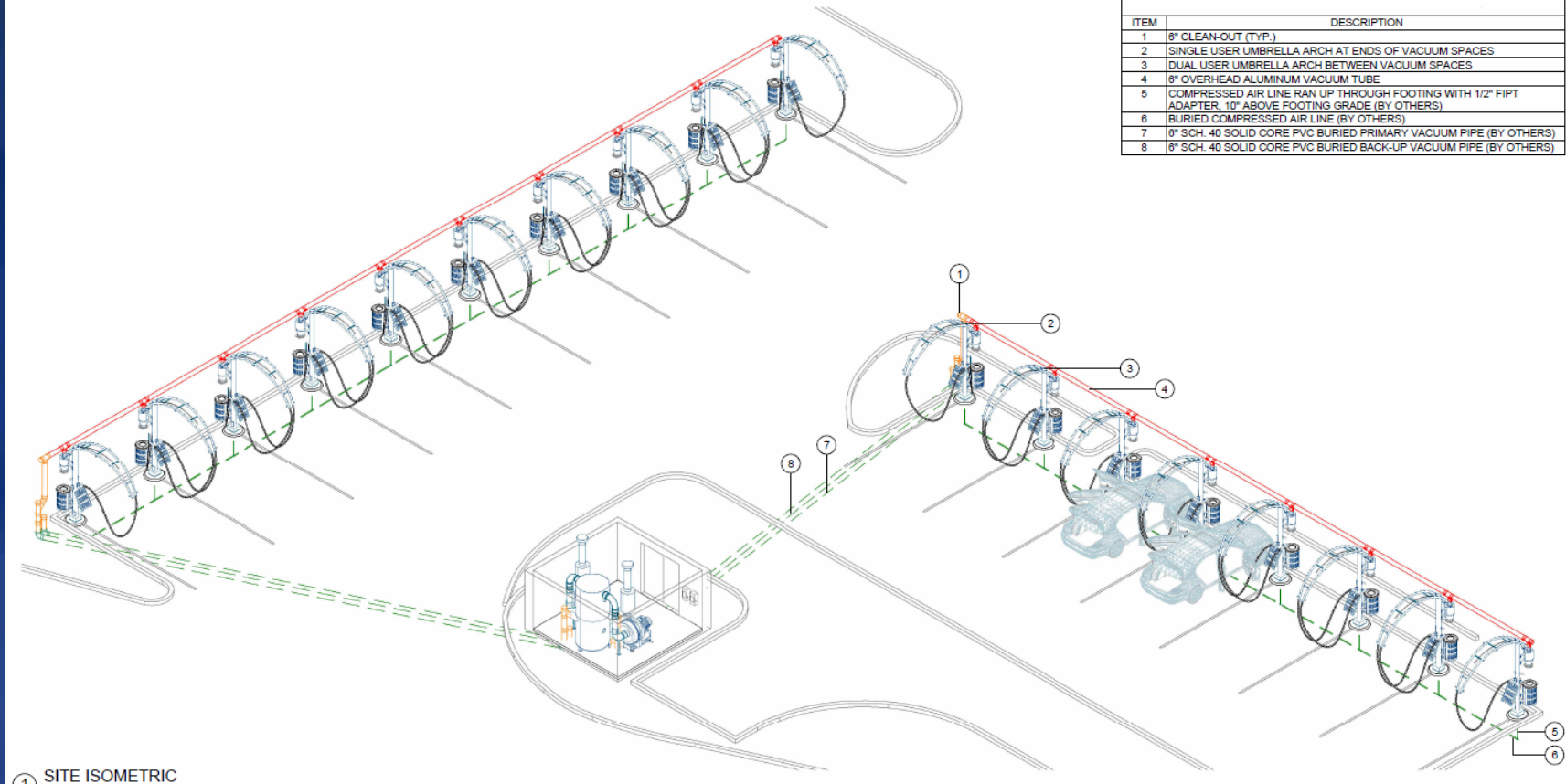
Project Number	1567752
Date	5/28/25
Drawn By	RY
Checked By	TD

**V111**

5/27/2025 2:20:42 PM

# Project Elevations 2

\*THIS DRAWING IS PRELIMINARY AND NOT TO BE USED FOR CONSTRUCTION\*



SITE ISOMETRIC	
ITEM	DESCRIPTION
1	6" CLEAN-OUT (TYP.)
2	SINGLE USER UMBRELLA ARCH AT ENDS OF VACUUM SPACES
3	DUAL USER UMBRELLA ARCH BETWEEN VACUUM SPACES
4	8" OVERHEAD ALUMINUM VACUUM TUBE
5	COMPRESSED AIR LINE RAN UP THROUGH FOOTING WITH 1/2" FIPT ADAPTER, 10" ABOVE FOOTING GRADE (BY OTHERS)
6	BURIED COMPRESSED AIR LINE (BY OTHERS)
7	6" SCH. 40 SOLID CORE PVC BURIED PRIMARY VACUUM PIPE (BY OTHERS)
8	6" SCH. 40 SOLID CORE PVC BURIED BACK-UP VACUUM PIPE (BY OTHERS)

① SITE ISOMETRIC

THIS PRELIMINARY DRAWING IS THE PROPERTY OF VACUTECH AND IS NOT TO BE USED FOR CONSTRUCTION OR INSTALLATION WITHOUT WRITTEN CONSENT. WRITTEN CONSENT MAY NOT BE PROVIDED BY ANY PERSON, AGENCY, OR DEALER NOT AUTHORIZED BY VACUTECH.

**VACUTECH**  
AN **NCS** COMPANY  
1350 HI-TECH DRIVE  
SHERIDAN, WY 82801  
PHONE: (307) 675-1962  
EMAIL: [vacinfo@ncsash.com](mailto:vacinfo@ncsash.com)  
WEB: [www.vacutecnh.com](http://www.vacutecnh.com)

**CHARLIE'S CAR WASH**

950 NORTH WEST CHIPMAN ROAD  
LEE'S SUMMIT, MISSOURI 64086

#	Revision	By	Chk	Date

**VACUUM SITE ISOMETRIC**

Project Number 1567752  
Date 5/28/25  
Drawn By RY  
Checked By TD

**V121**

## Charlie's Car Wash - Lee's Summit

Aerial from South



# Aerial View from South





# Aerial View from North



Charlie's Car Wash, Lee's Summit  
New Employee Parking Area

Legend



# Proposed Parking Area





# Vacuum Station – Charlie's Independence





# Vacuum Station – Charlie's Independence





# Vacuum Station – Charlie's Independence





# Vacuum Station – Charlie's Olathe



***Thank you!***

