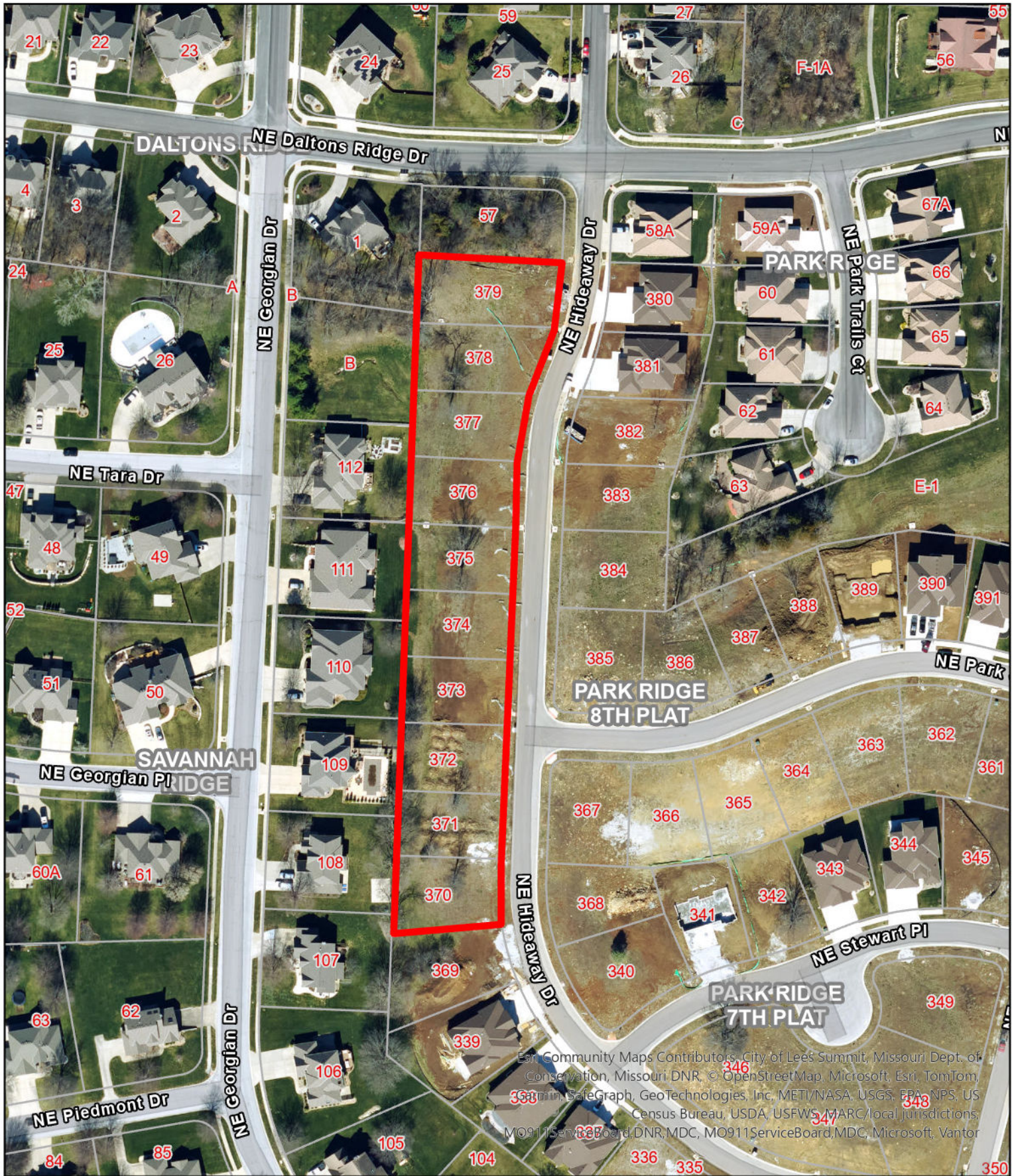


Appl. #PL2026-118 - Vacation of Easement - Park Ridge 8th Plat, Lots 370 thru 379; Matthew Schlicht, applicant.



City of Lees Summit, Missouri, Dept. of Conservation, Missouri DNR, © OpenStreetMap, Microsoft, Esri, TomTom, 3331 min, SafeGraph, GeoTechnologies, Inc, METI/NASA, USGS, EPA, NPS, US Census Bureau, USDA, USFWS, MARC/local jurisdictions, MO911ServiceBoard, DNR, MDC, MO911ServiceBoard, MDC, Microsoft, Vantor

