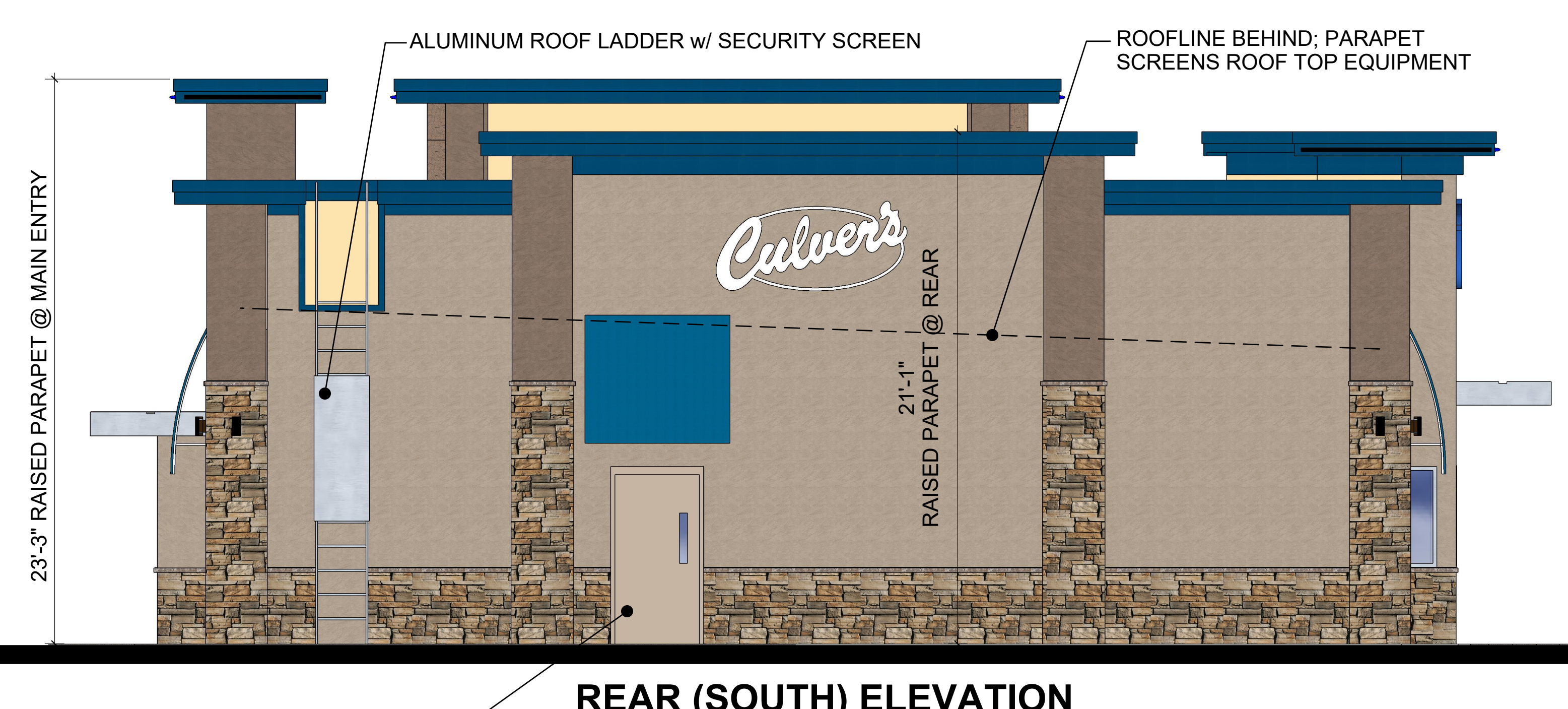


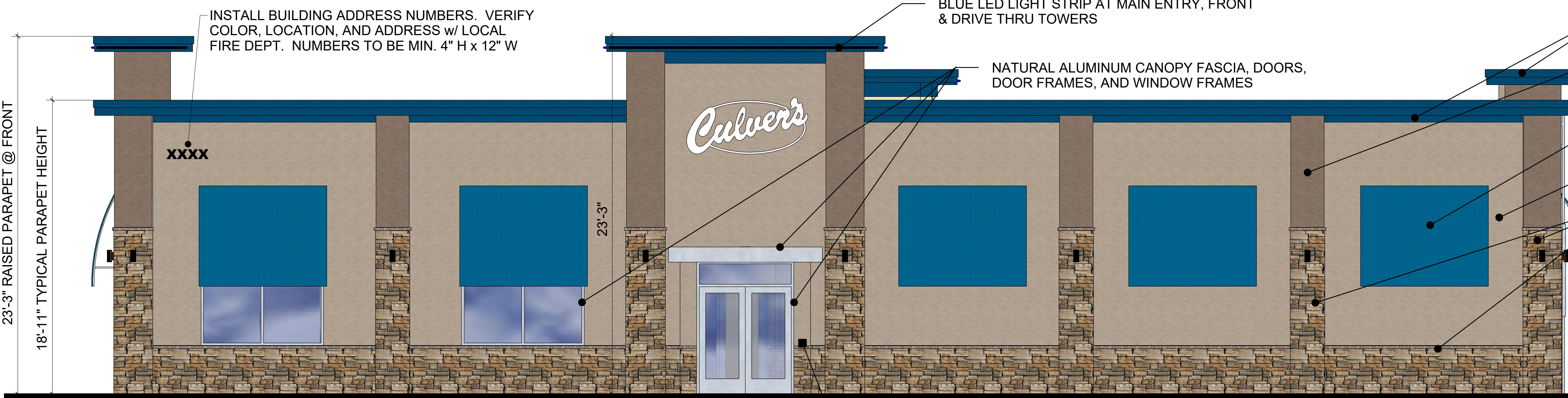
DRIVE THRU (EAST) ELEVATION



FRONT (NORTH) ELEVATION



REAR (SOUTH) ELEVATION



MAIN ENTRY (WEST) ELEVATION

REPRESENTATION	MATERIAL	COLOR
[Line pointing to roof edge]	ROOF EDGE, METAL TRIM BAND	"REGAL BLUE"
[Line pointing to upper piers]	EIFS - UPPER PIERS	"TIKI HUT" SW 7509
[Line pointing to awning canvas]	AWNING CANVAS (BY OTHERS)	"ROYAL BLUE" 4617
[Line pointing to main field color]	EIFS - MAIN FIELD COLOR	"TONY TAUPE" SW 7038
[Line pointing to stone trim]	MFGR'D STONE w/ STONE SILL TRIM	"ASPEN NICKEL CREEK" TUSCAN LEDGE ENVIRONMENTAL STONEWORKS

©2019

NEW CULVER'S RESTAURANT
SE Oldham Parkway
 Lee's Summit, MO 64063
 County of JACKSON

Culver's
 Culver Franchising System, Inc
 1240 Water Street
 Prairie du Sac, WI 53578
 608-643-7980

OLLMANN ERNEST MARTIN
 ARCHITECTS
 200 South State Street
 Belleville Illinois 61008
 815-544-7790 Phone

ELEVATIONS
 NOTE: THOUGH THESE IMAGES HAVE PHOTO REALISTIC QUALITIES, THE ACTUAL BUILDING MATERIALS MAY VARY IN APPEARANCE.
 Date: 12-10-2019 Revision:

2019-145

A1



REAR LEFT VIEW (SOUTHEAST CORNER)



REAR RIGHT VIEW (SOUTHWEST CORNER)



FRONT RIGHT VIEW (NORTHWEST CORNER)



FRONT LEFT (NORTHEAST CORNER)



LEFT PERSPECTIVE (EAST VIEW)



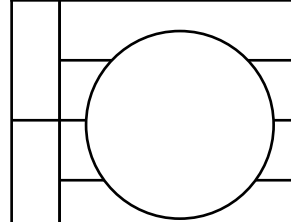
RIGHT PERSPECTIVE (WEST VIEW)

©2019

NEW CULVER'S RESTAURANT
SE Oldham Parkway
 Lee's Summit, MO 64063
 County of JACKSON

Culver's
 Culver Franchising System, Inc
 1240 Water Street
 Prairie du Sac, WI 53578
 608-643-7980

OLLMANN ERNEST MARTIN
 ARCHITECTS
 200 South State Street
 Belvidere Illinois 61008
 815-544-7790 Phone



ELEVATIONS
 NOTE: THOUGH THESE IMAGES HAVE PHOTO
 REALISTIC QUALITIES, THE ACTUAL BUILDING
 MATERIALS MAY VARY IN APPEARANCE.
 Date: 12-10-2019 Revision:

2019-145

A2