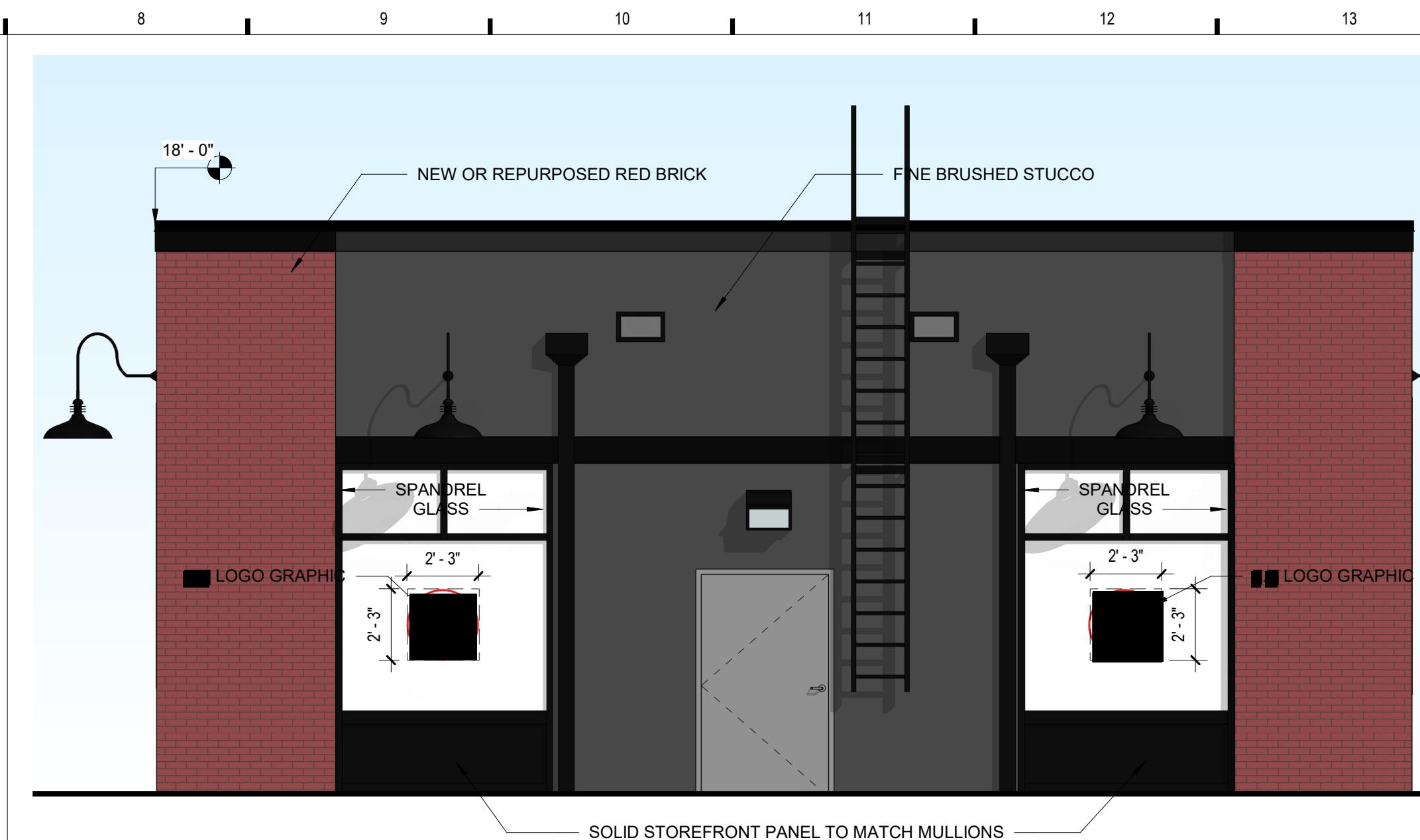


**E1 ELEVATION - FRONT**  
1/4" = 1'-0"



**E8 ELEVATION - REAR**  
1/4" = 1'-0"

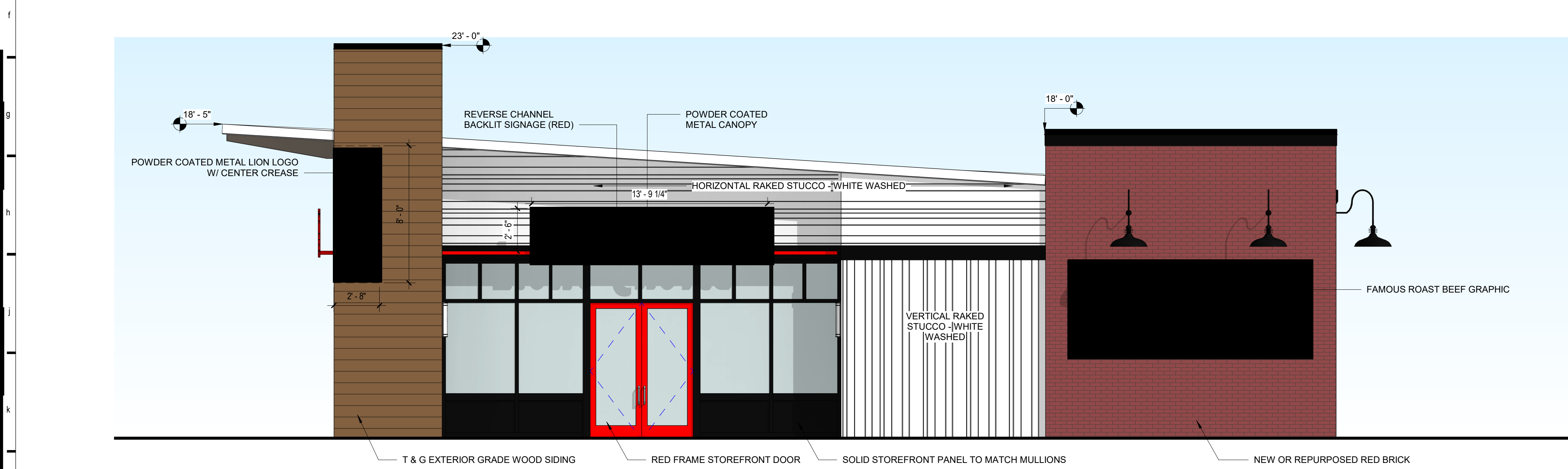
**MATERIAL RATIOS**

ELEVATION E1:  
MATERIALS CATEGORY 1: RAKED STUCCO - 229 S.F. - 30%  
STOREFRONT GLASS - 329 S.F. - 43%  
MATERIALS CATEGORY 2: EXTERIOR GRADE WOOD - 203 S.F. - 27%

ELEVATION E8:  
MATERIALS CATEGORY 1: FINE BRUSHED STUCCO - 341 S.F. - 43%  
STOREFRONT SPANDREL GLASS - 142 S.F. - 21%  
BRICK, SOLID - 203 S.F. - 29%

ELEVATION L1:  
MATERIALS CATEGORY 1: RAKED STUCCO - 297 S.F. - 30%  
STOREFRONT GLASS - 291 S.F. - 30%  
BRICK, SOLID - 265 S.F. - 27%  
MATERIALS CATEGORY 2: EXTERIOR GRADE WOOD - 123 S.F. - 15%

ELEVATION S1:  
MATERIALS CATEGORY 1: RAKED STUCCO - 410 S.F. - 43%  
STOREFRONT GLASS - 143 S.F. - 15%  
STOREFRONT SPANDREL GLASS - 130 S.F. - 14%  
BRICK, SOLID - 162 S.F. - 17%  
MATERIALS CATEGORY 2: EXTERIOR GRADE WOOD - 117 S.F. - 12%

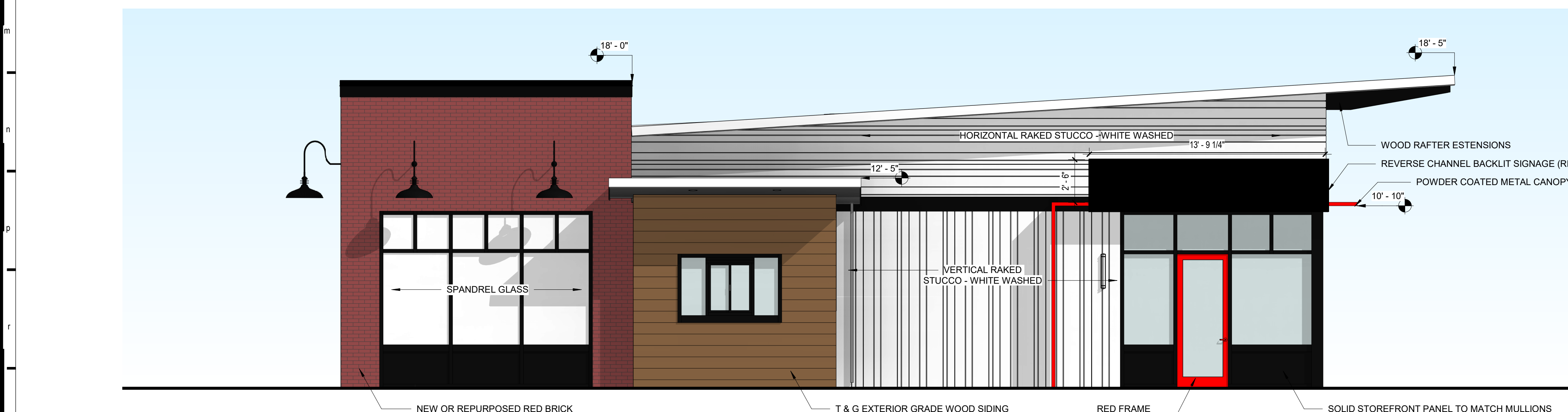


**L1 ELEVATION - MAIN ENTRY**  
1/4" = 1'-0"

**SHEET NOTES**

1. REFER TO COORDINATE REFERENCE SHEET FOR ALL SIGNAGE.  
2. FACTOR TO COORDINATE REVISIONS FOR (NOT LIMITED TO) ALL SIGNAGE.

#	Date



**S1 ELEVATION - DRIVE THROUGH**  
1/4" = 1'-0"

**KEYNOTES**

These drawings/specifications are the property of Oculus Inc. They are furnished as contract documents only. The architect and engineer assume no responsibility for all other plans, specifications, estimates, reports or other documents or instruments relating to or intended to be used for any part or parts of the architectural or engineering project. Additionally, these drawings and specifications shall in no way convey or imply any type of warranty or certification relating to the performance of products and materials beyond those provided by their respective manufacturer.  
Revised 03/05/2018 Oculus Inc.

**EXTERIOR ELEVATIONS**

Project # 52117-KS01  
Issue Date 03.05.2018  
Scale 1/4" = 1'-0"  
Drawn by Author  
Checked by Checker

**SP5.0**

**Oculus Inc.**  
ARCHITECTURE | STRATEGIC PLANNING | INTERIORS | MOVE MANAGEMENT  
ONE SOUTH MEMORIAL DRIVE | SUITE 1500ST. LOUIS, MO 63102 | (314) 367-6100