

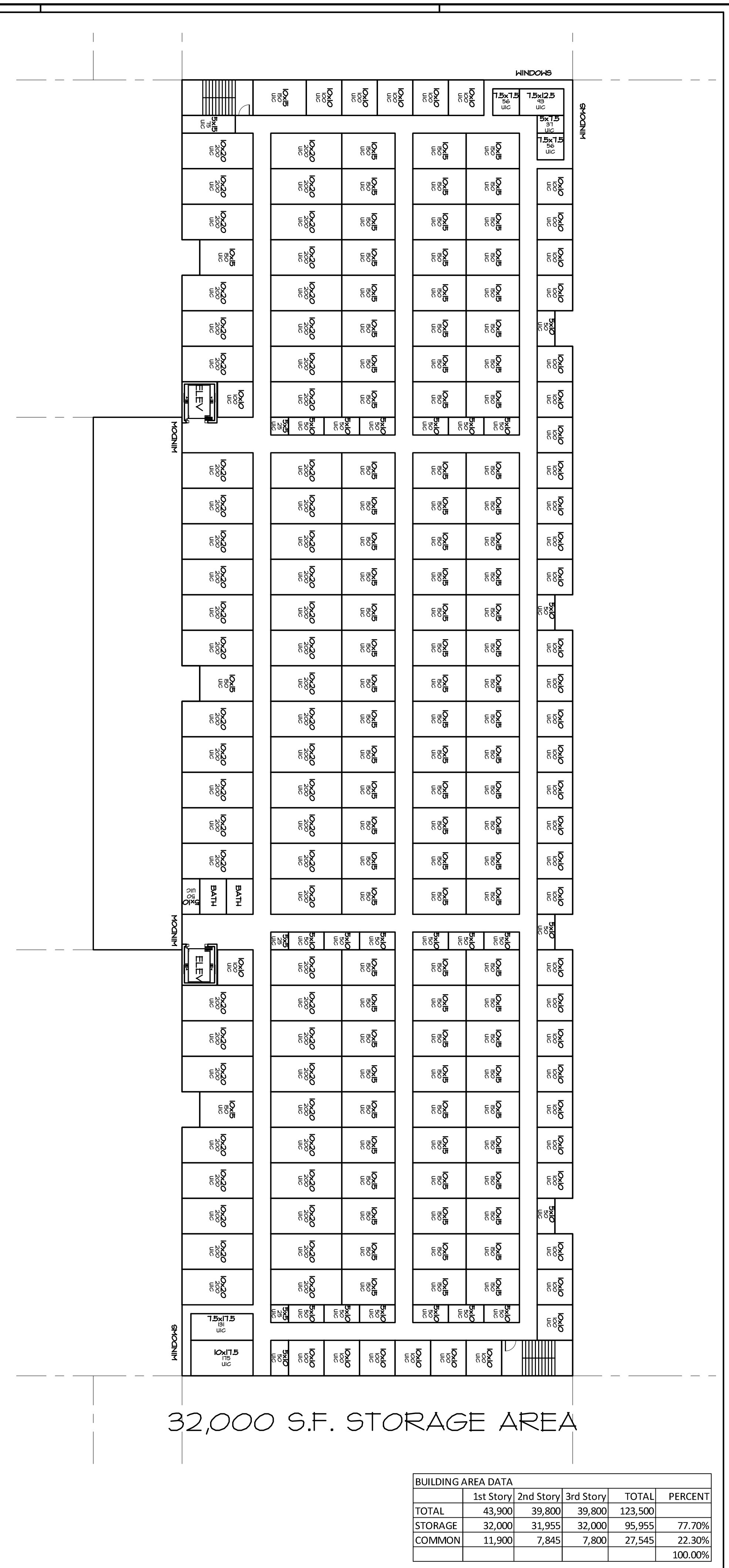
Hernly ASSOCIATES

1100 Rhode Island Street
 Lawrence, Kansas 66044
 785 - 749 - 5806
 FAX 785 - 749 - 1515

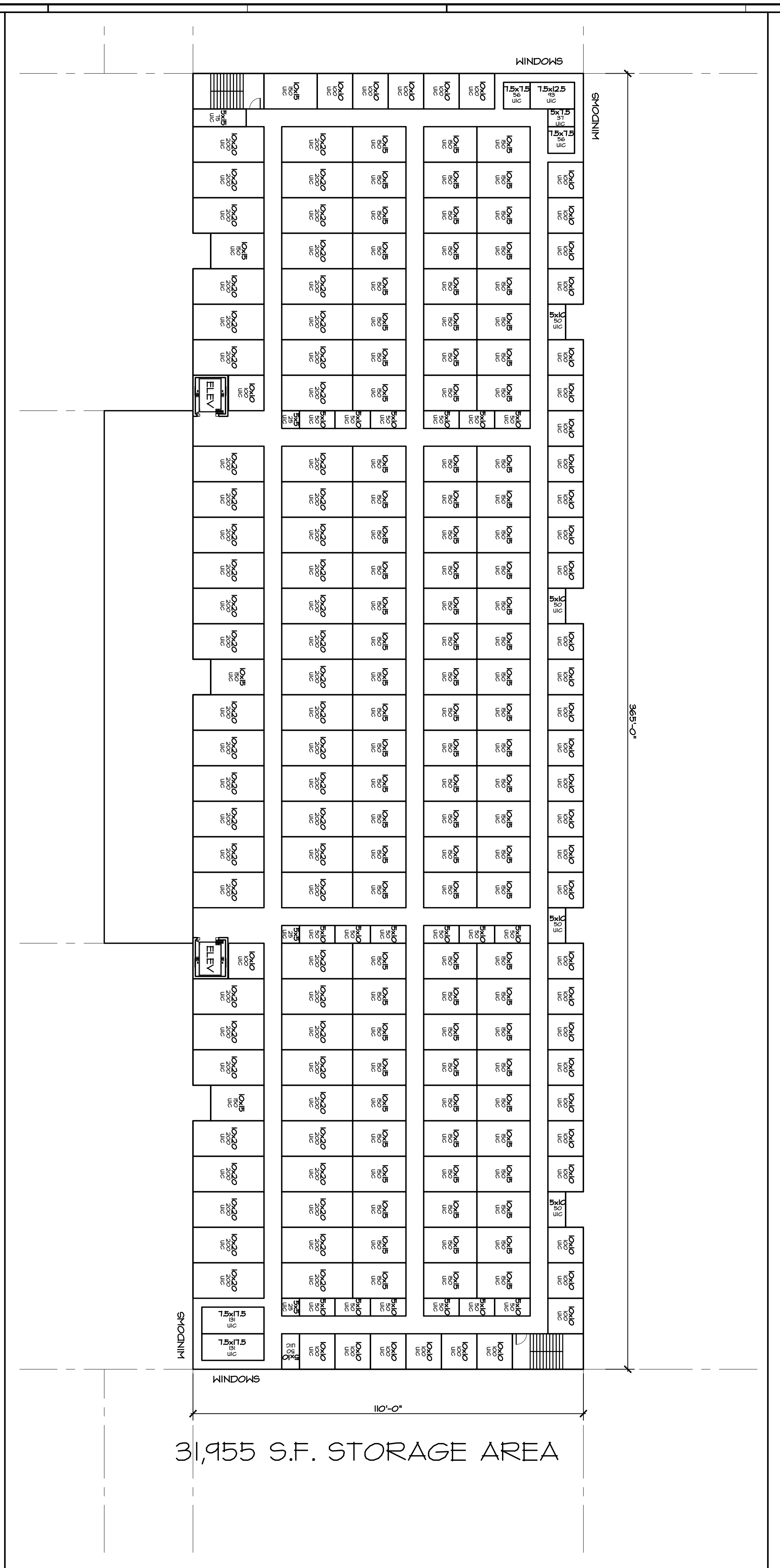
UNIT MIX PLAN

Date: 2018/10/12
 Drawn by: SCH
 Checked by:
 Revisions:

A1.0

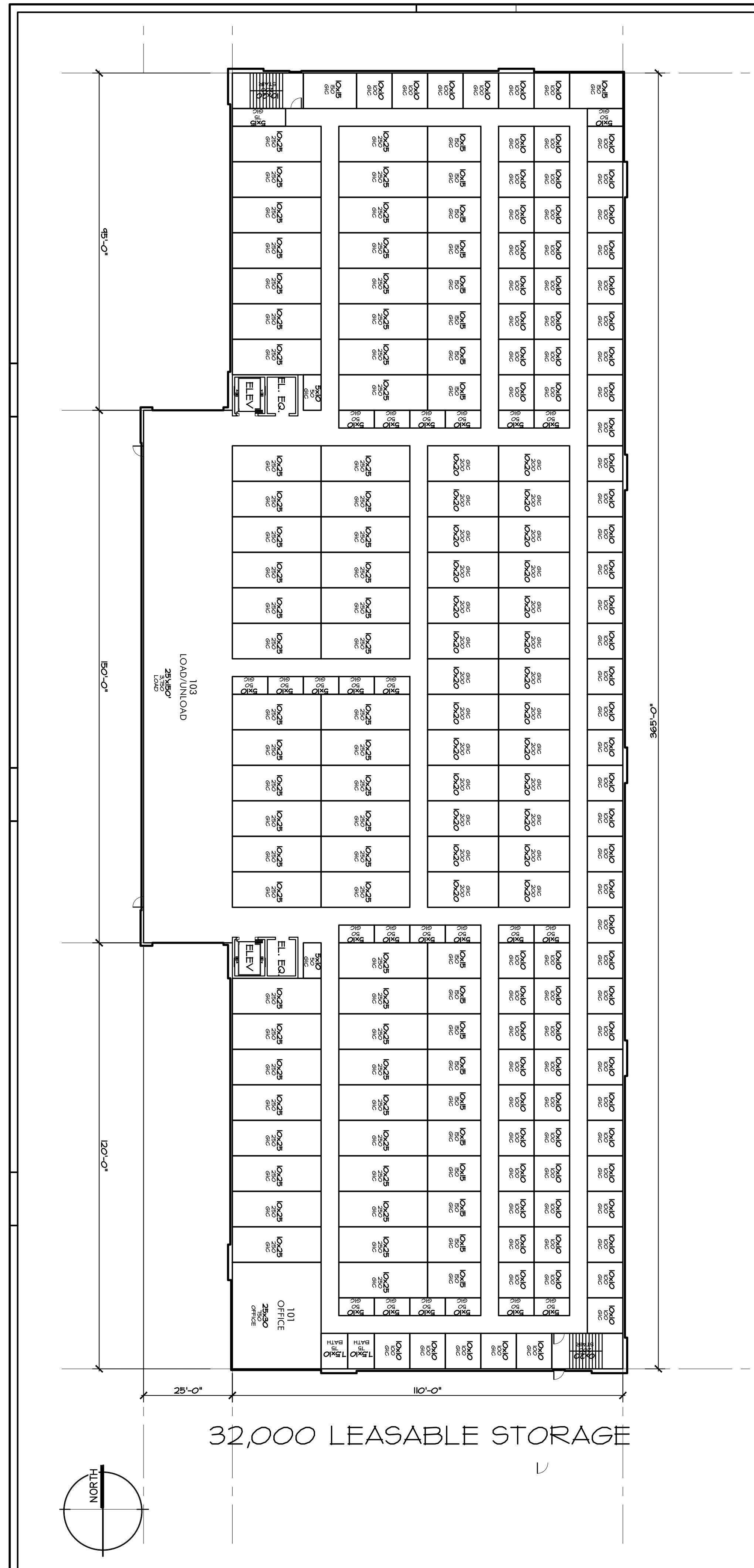


32,000 S.F. STORAGE AREA



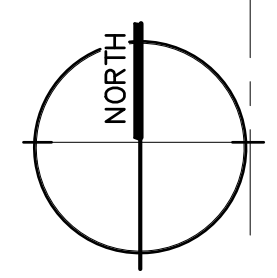
31,955 S.F. STORAGE AREA

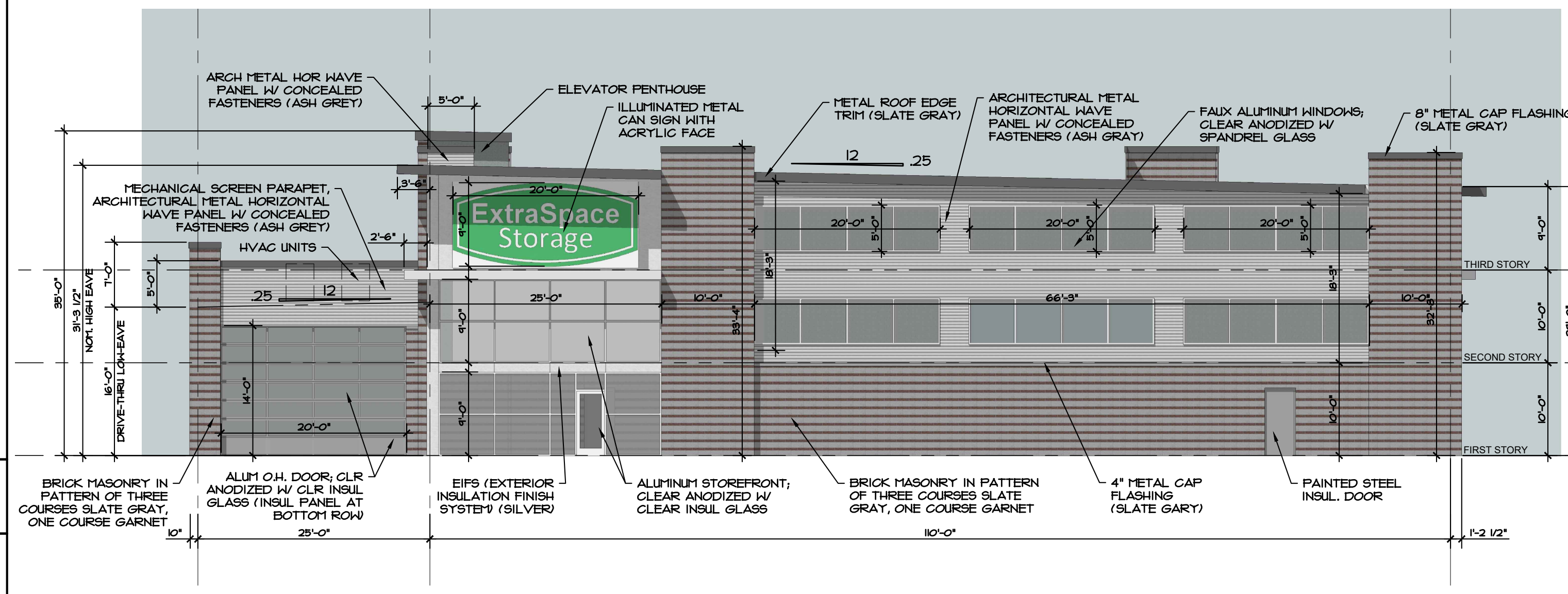
2 SECOND STORY LAYOUT PLAN - 39,800 S.F.
 1" = 20'-0"



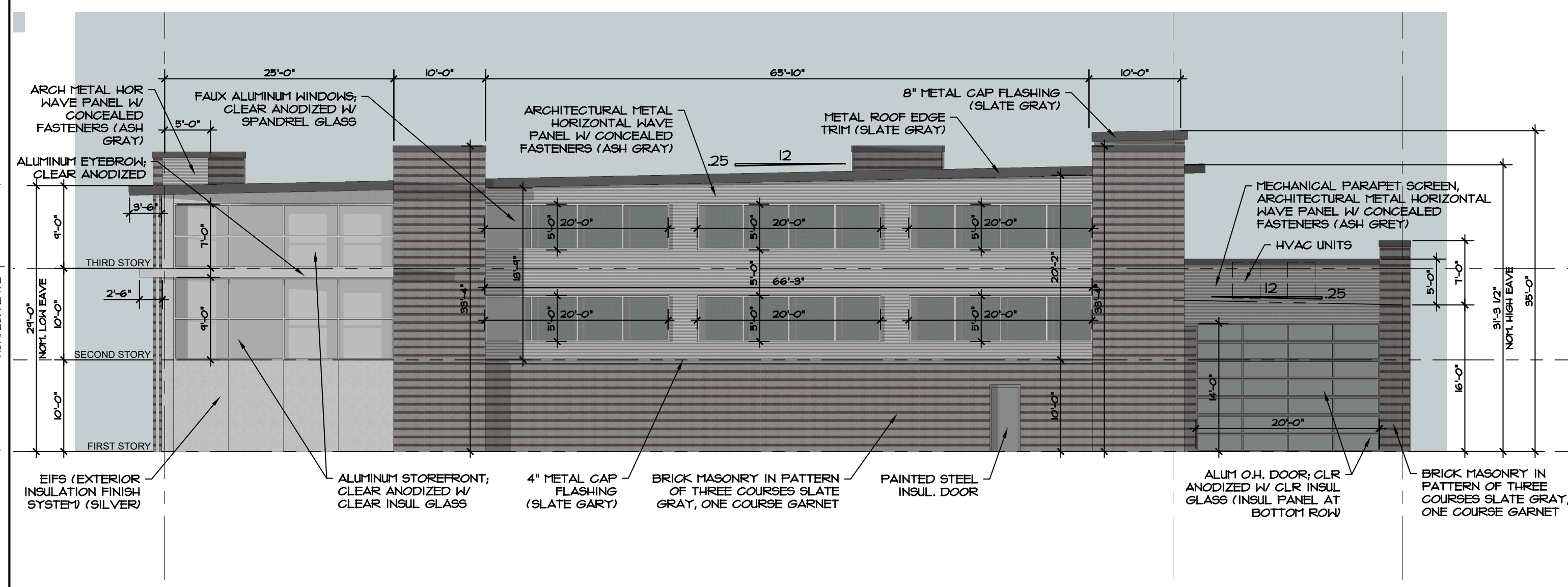
32,000 LEASABLE STORAGE

1 FIRST STORY LAYOUT PLAN - 43,900 S.F.
 1" = 20'-0"

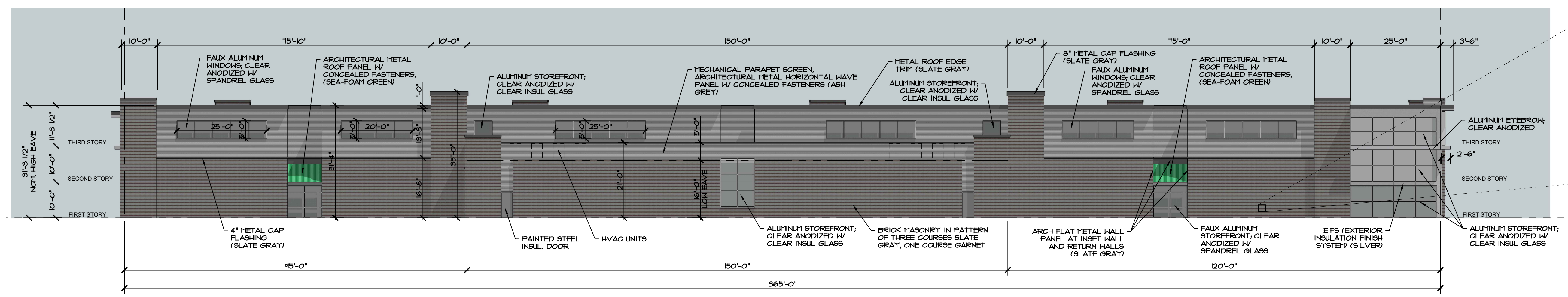




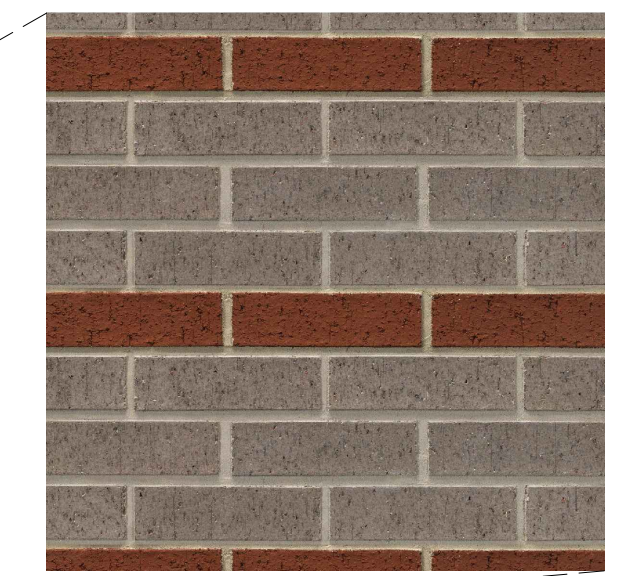
1 SOUTH ELEVATION
3/32" = 1'-0"



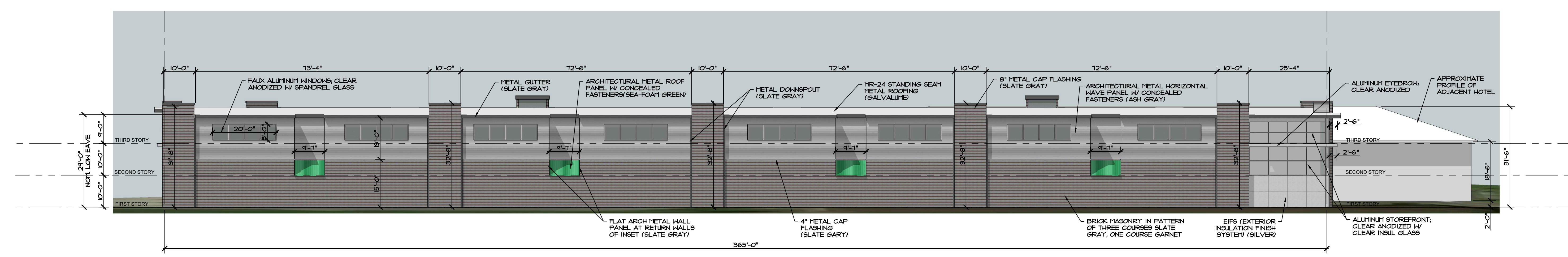
2 NORTH ELEVATION
3/32" = 1'-0"



3 WEST ELEVATION
1/16" = 1'-0"



5 BRICK PATTERN
NTS



4 EAST ELEVATION
1/16" = 1'-0"

EXTRASPACE STORAGE
650 OLDHAM PARKWAY
LEE'S SUMMIT, MISSOURI



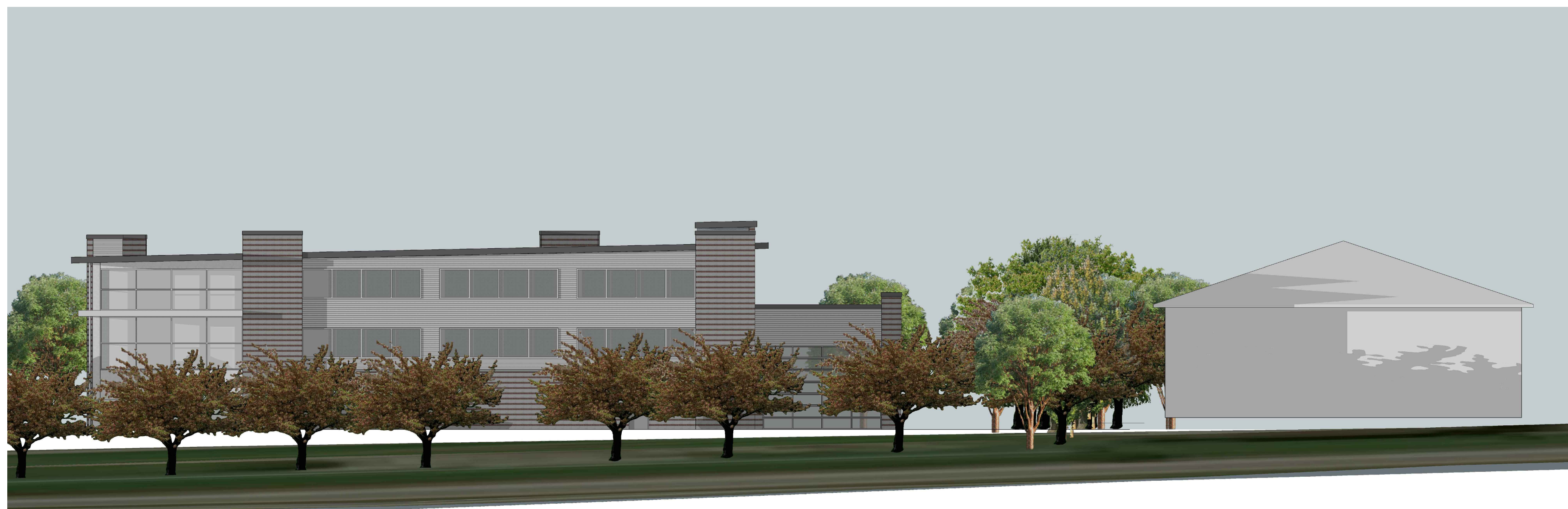
Hernly Associates
1100 Rhode Island Street
Lawrence, Kansas
66044
785 - 749 - 5806
FAX 785 - 749 - 1515

ELEVATIONS
Date: 2018/10/12
Drawn by: SCH
Checked by:
Revisions:

A2.0



1 SOUTH ELEVATION WITH PROPOSED TREES AND EXISTING ADJACENT HOTEL PROFILE
3/32" = 1'-0"

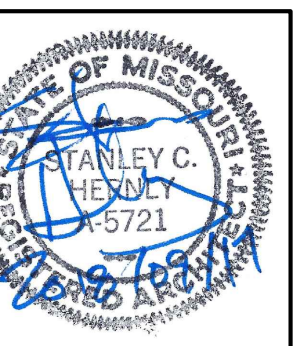


2 WEST ELEVATION WITH PROPOSED TREES AND EXISTING ADJACENT HOTEL PROFILE
1/16" = 1'-0"



3 EAST ELEVATION WITH PROPOSED TREES AND EXISTING ADJACENT HOTEL PROFILE
1/16" = 1'-0"

EXTRASPACE STORAGE
650 OLDHAM PARKWAY
LEE'S SUMMIT, MISSOURI



Hernly
ASSOCIATES

1100 Rhode Island Street
Lawrence, Kansas
66044
785 - 749 - 5806
FAX 785 - 749 - 1515

ELEVATIONS

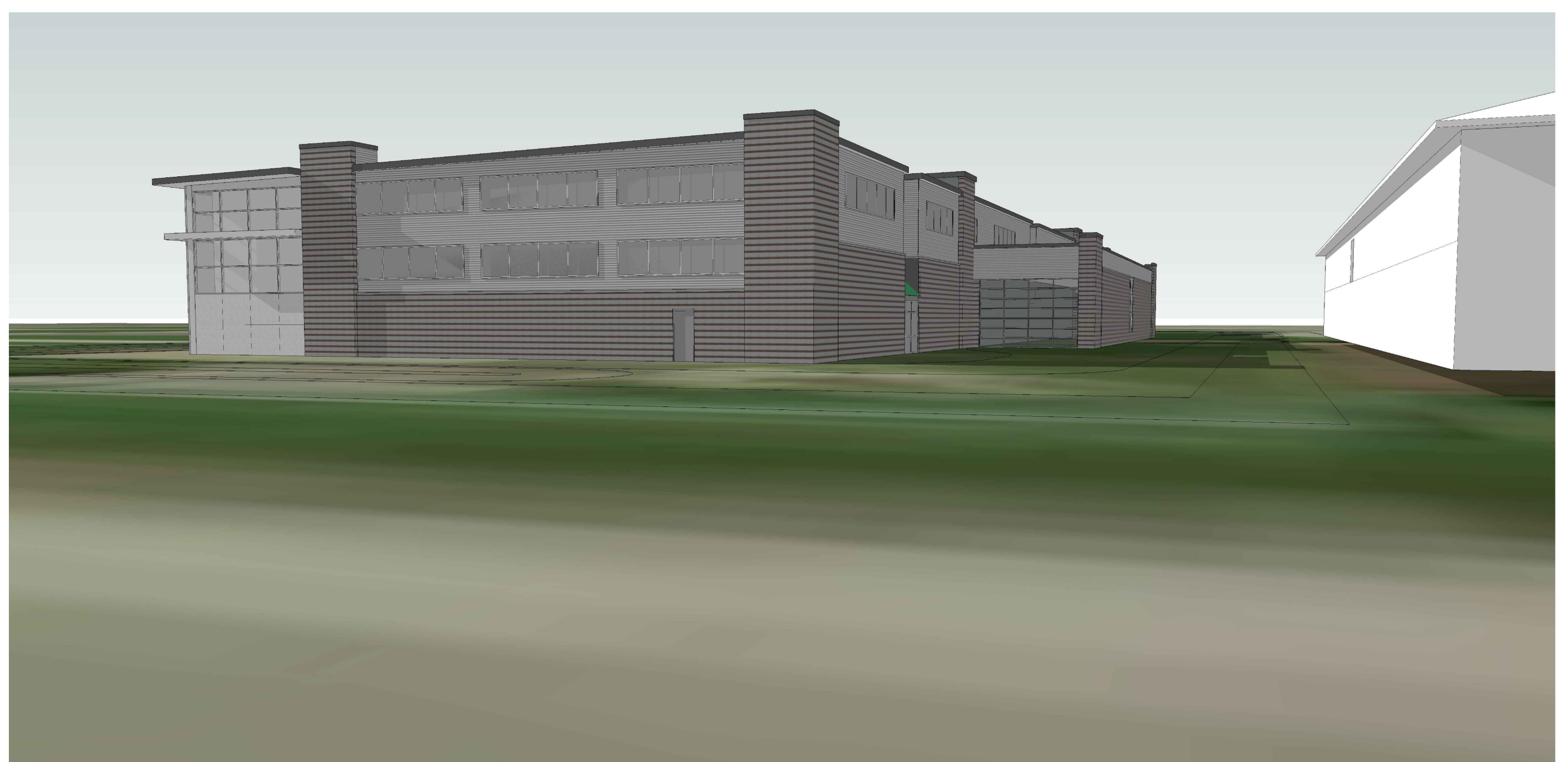
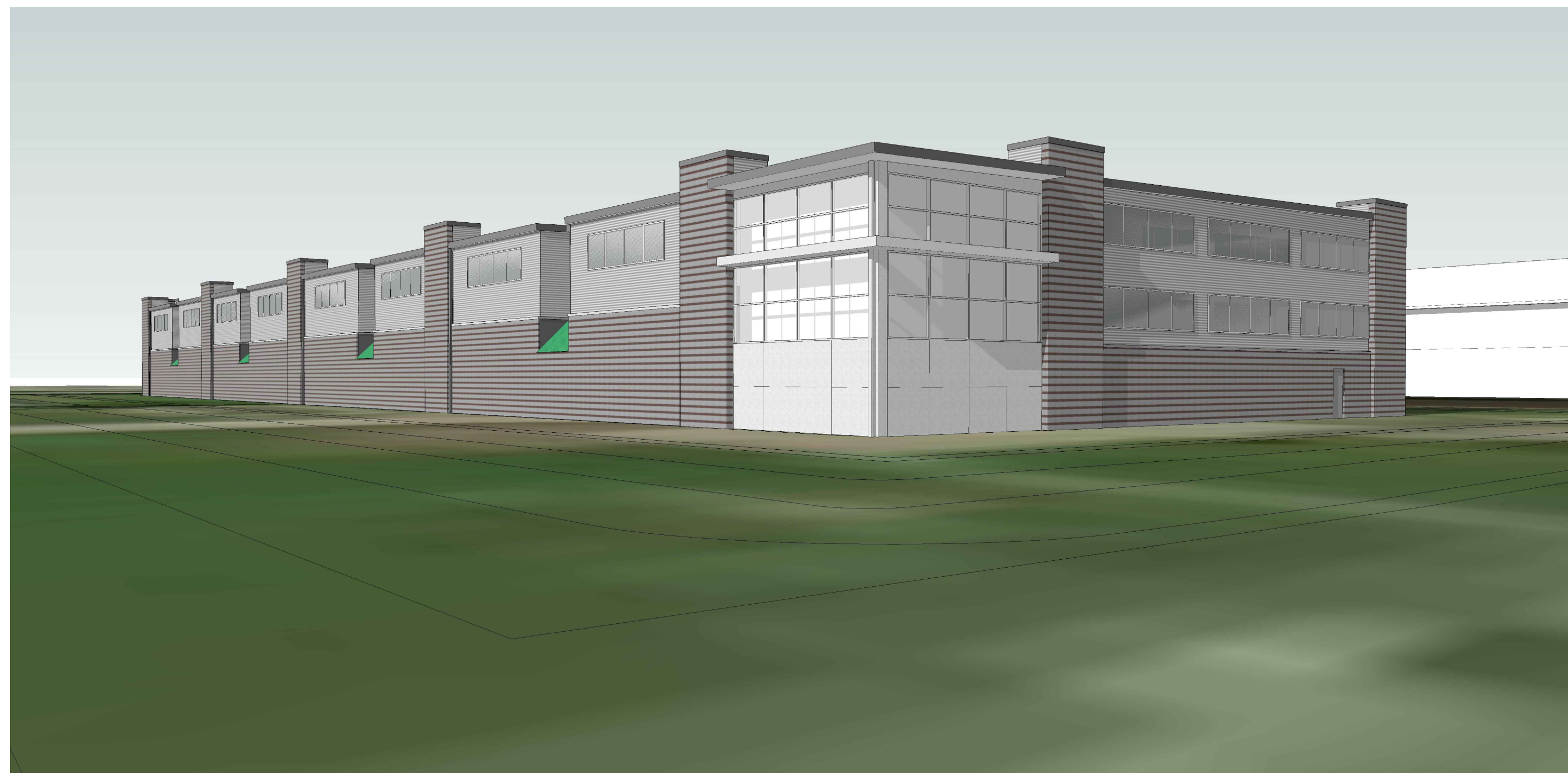
Date: 2018/10/12
Drawn by: SCH
Checked by:
Revisions:

A2.1



1 SOUTHWEST PERSPECTIVE
NTS

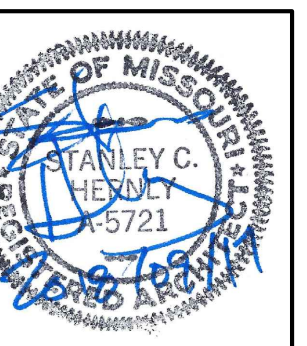
2 SOUTHEAST PERSPECTIVE
NTS



3 NORTHEAST PERSPECTIVE
NTS

4 NORTHWEST PERSPECTIVE
NTS

EXTRASPACE STORAGE
650 OLDHAM PARKWAY
LEE'S SUMMIT, MISSOURI



Hernly
ASSOCIATES

1100 Rhode Island Street
Lawrence, Kansas
66044
785 - 749 - 5806
FAX 785 - 749 - 1515

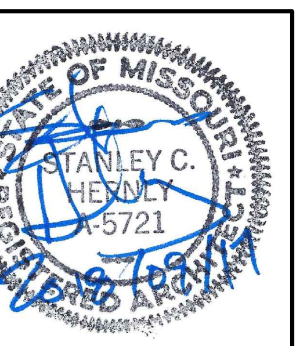
ELEVATIONS

Date: 2018/10/12
Drawn by: SCH
Checked by:
Revisions:



1 VIEW FROM WEST
NTS

EXTRASPACE STORAGE
650 OLDHAM PARKWAY
LEE'S SUMMIT, MISSOURI



Hernly
ASSOCIATES

1100 Rhode Island Street
Lawrence, Kansas
66044
785 - 749 - 5806
FAX 785 - 749 - 1515

ELEVATIONS

Date: 2018/10/12
Drawn by: SCH
Checked by:
Revisions:



2 VIEW FROM NORTHEAST
NTS



3 VIEW FROM NORTHWEST
NTS