



CORPORATE HEADQUARTERS
 1077 West Blue Heron Blvd., West Palm Beach, FL 33404
 Phone: (561)963-8659 / (800)772-5322 Fax: (561)963-4204

NORTH-EAST DIVISION
 705 Chesapeake Dr., Chesapeake, NC 28523
 Phone: (919)898-2323 / (800)772-5322 Fax: (701)786-3643
 www.atlassignindustries.us

This design / engineering is to remain Atlas Sign Industries exclusive property until approved and accepted thru purchase by client named on drawing. No part of design shall be reproduced or transmitted in any form without written authorization of Atlas Sign Industries.
 © Copyright 2011

Drawing No.	77324-2
Sheet No.	(2) OF (4)
Date	3 / 29 / 2017
PM	Reall Petco (MO) Lewis, Summit
Drawn By	T. DelNicholas
Scale	As Shown
Revision 1	4 / 17 / 17 By TD
Revision 2	
Revision 3	
Revision 4	
Revision 5	



This PETCO Signage Exhibit Approval:
 Date: _____
 By Landlord: _____
 By Name: _____
 Title: _____

SCOPE OF WORK:
 Fabricate and install new storefront sign as shown and described.

DESCRIPTION:
 1. Letters and logo fabricated with aluminum backs and pre-finished aluminum returns.
 2. Letters and logo internally illuminated with energy efficient LED.
 3. Letter faces are white acrylic with vinyl overlay, secured with aluminum retainers.
 4. Logo face is impact resistant white polycarbonate with vinyl overlays, secured with fabricated metal retainers.
 5. Letters and logo are flush mounted to elevation with remote LED power packs and electrical connections.

ELECTRICAL DATA	
Units	1000 Watts / 7.5 Amps Secondary
Total Amps	1.50 Amps Primary / 7.5 Amps Secondary
Breakers	(1) 150MVAZ / 20 AMP Breaker
Visible Disconnects	(1) 750 Amp @ 150MVAZ
Power Supplies	3 @ 0.65

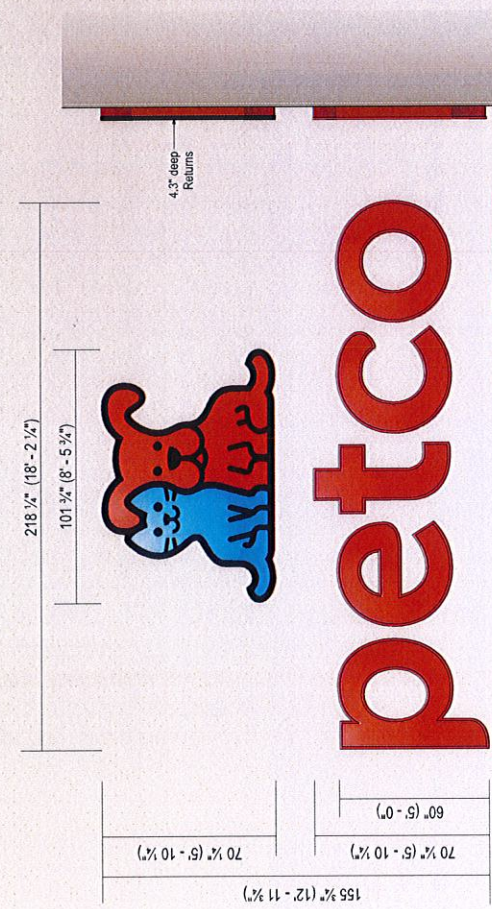
ELECTRICAL NOTES	
1.	All materials and finishes meet 3004.4
2.	Sign must be UL listed and approved.
3.	Sign fabricated according to NEC 600.7
4.	Sign manufacturer and installer NEC 600.3 and marked
5.	All branch circuits per NEC 600.5(B)(1) or (B)(2).
6.	All signs installed by professional or time clock per NEC 600.14(B)(1).
7.	One (1) 20 amp disconnect per sign per circuit per NEC 600.14(B)(1).

- COLOR SCHEDULE FOR LETTERS:**
- Faces = 2406 LD White acrylic with 3M 3630-53 Cardinal Red Vinyl
 - Retainers = Fabricated aluminum painted Red
 - Returns = Pre-Finished Red Exterior / White Interior
 - Letter LED Illumination = GE Red LED

- COLOR SCHEDULE FOR LOGO:**
- Face = 7328 white polycarbonate
 - Retainers = Fabricated aluminum painted black
 - Returns = Pre-Finished Red Exterior / White Interior
 - Dog & Cat Outline = 3M 7725-12 Black (gloss opaque) Vinyl on Exterior Surface.
 - Cat Graphics = 3M 3630-57 Blue Vinyl on Exterior Surface.
 - LED Illumination for Cat = GE Blue LED
 - Dog Graphics = 3M 3630-53 Cardinal Red Vinyl on Exterior Surface.
 - LED Illumination for Dog = GE Red LED

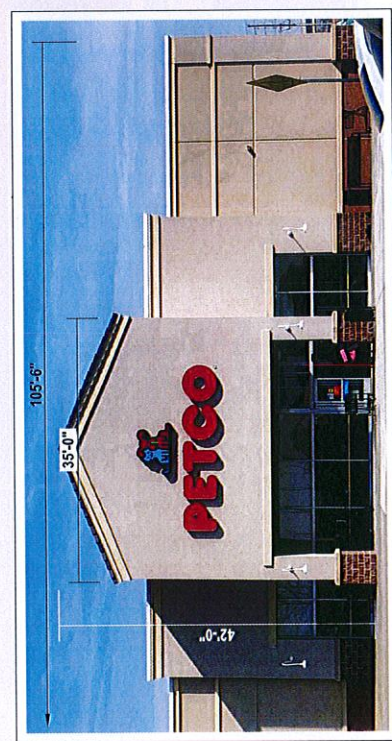
RECEIVED
 AUG - 4 2017

Development Services

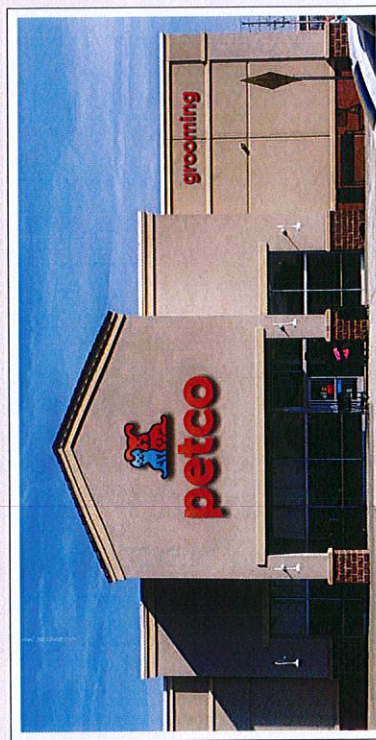


PROPOSED CHANNEL LETTERS & LOGO | 1/4" = 1'-0"

SQUARE FOOTAGE:
 ALLOWABLE = 10% of building facade; 105.5 x 25 = 2637.5
 2637.5 x 10% = 263.75 Sq Ft.
 PROPOSED = 156.10 Sq Ft. (180.26 Total for Elevation)



EXISTING CONDITIONS



PROPOSED SIGNAGE

Petco: 1860 NW Chipman Rd - Lee's Summit, MO

South Elevation with Channel Letters

- 2017 - 161