

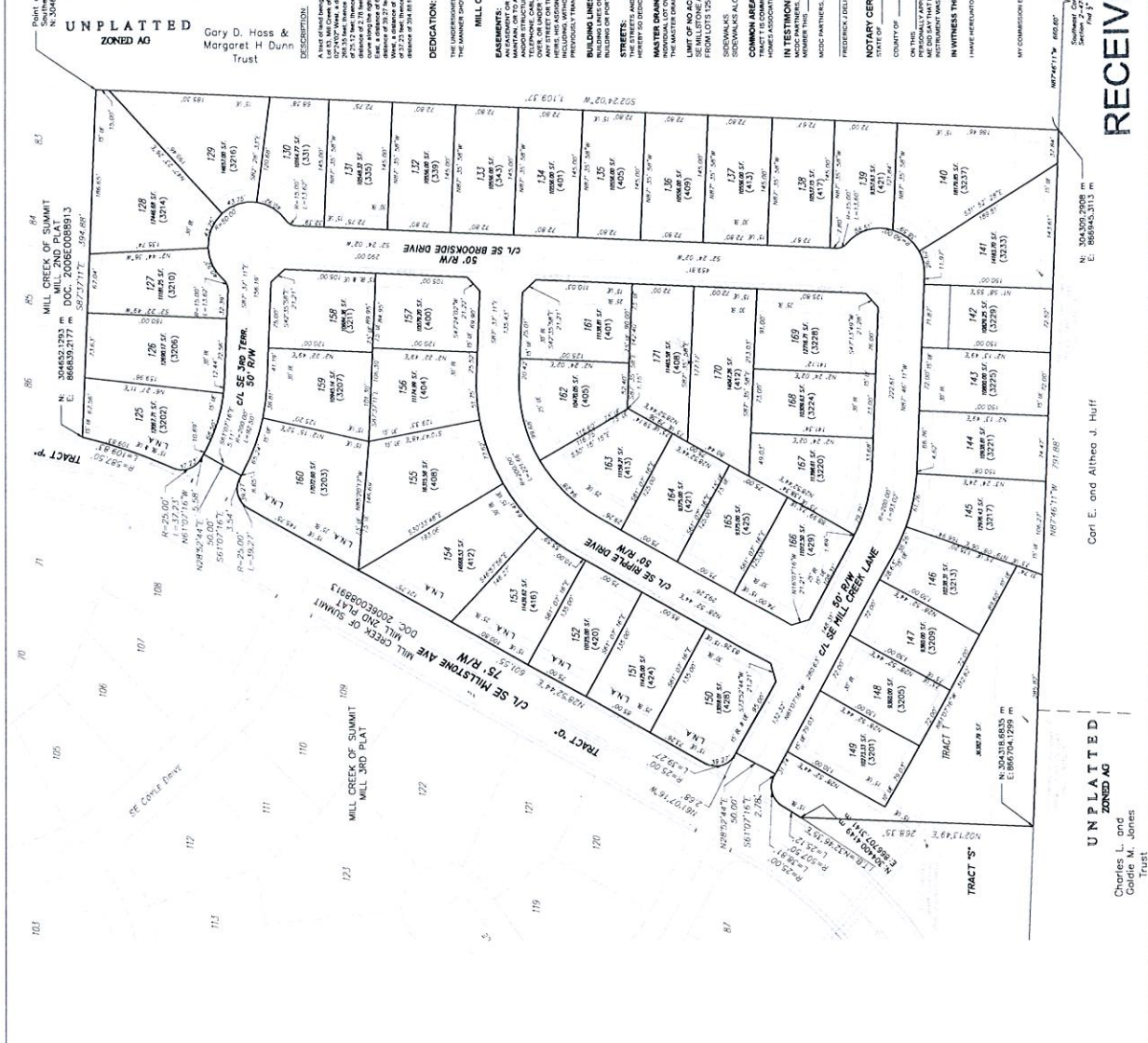
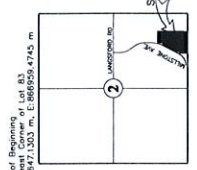
# Final Plat

## Lots 125 - 171 & Tract T

### Mill Creek of Summit Mill 4th Plat

#### Section 2, Township 47, Range 31

##### Lee's Summit, Jackson County, Missouri



RECEIVED  
JUN 24 2015  
Planning & Codes Admin

UNPLATTED  
ZONED AO  
Charles L. and Goldie M. Jones Trust

UNPLATTED  
ZONED AO  
Carl E. and Althea J. Huff

UNPLATTED  
ZONED AO

2015-076-