

Streets of West Pryor – Incentive Request for Mine Remediation Costs

Staff Presentation to City Council

February 16, 2021



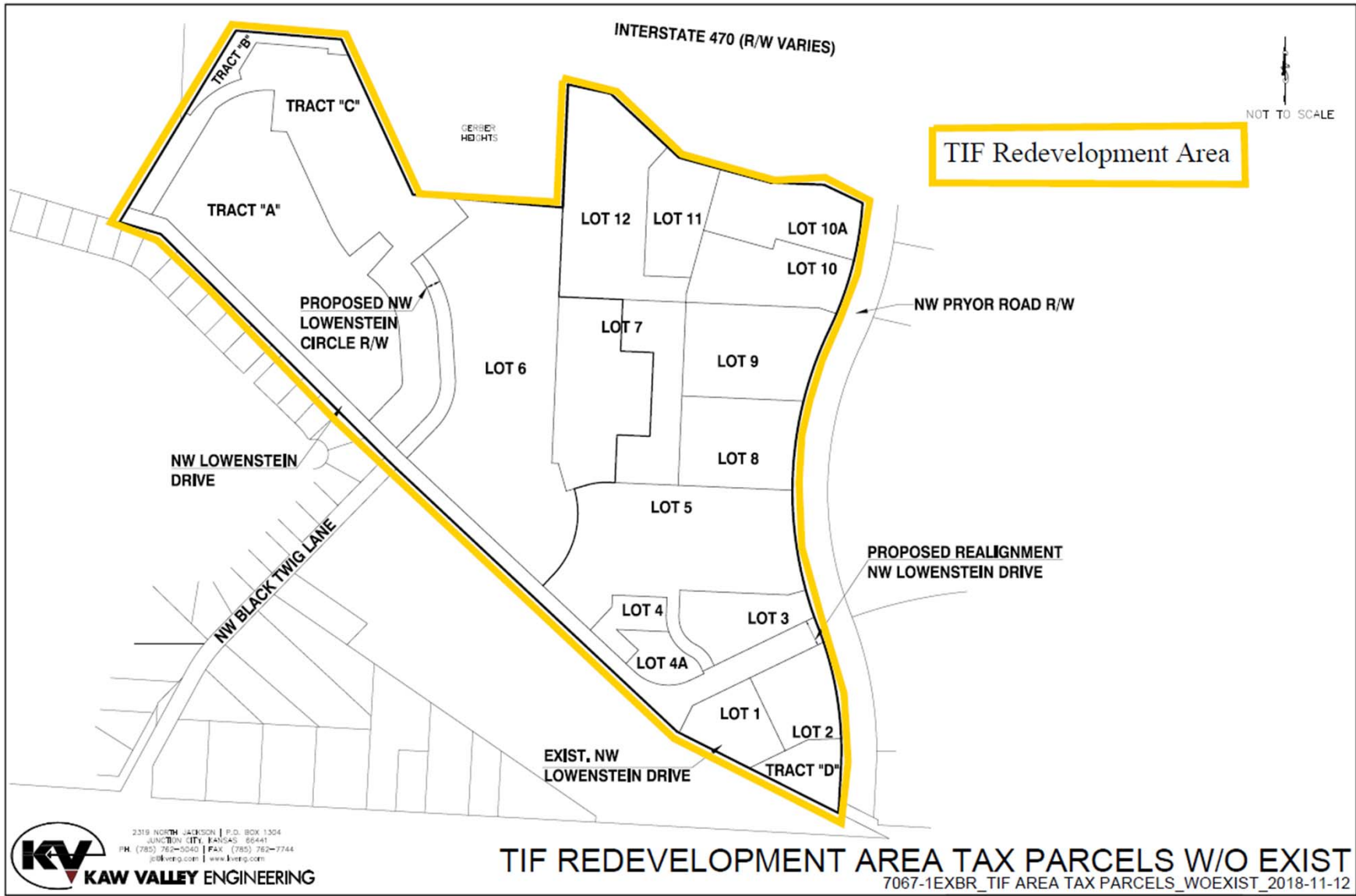
LEE'S SUMMIT
MISSOURI

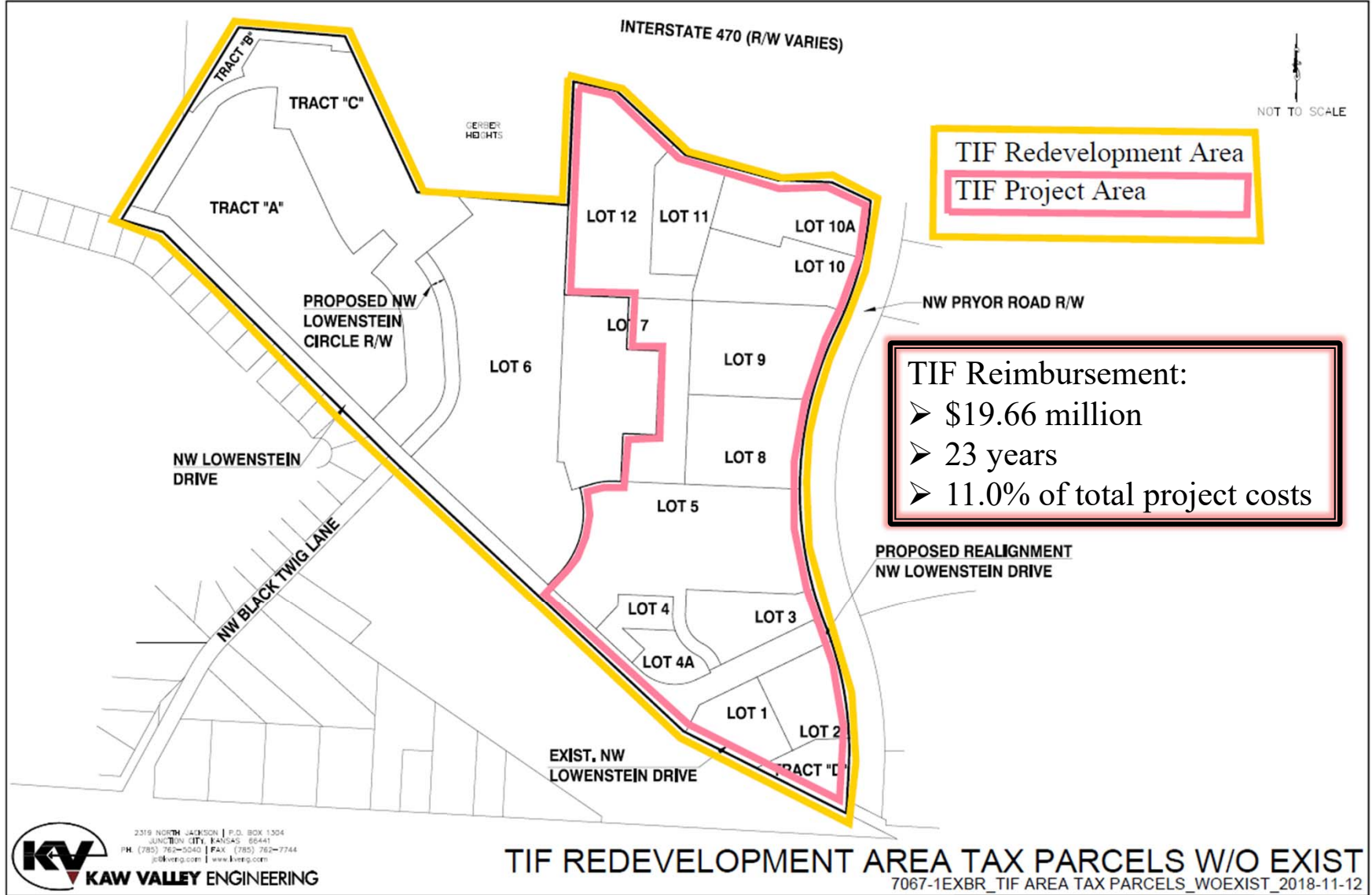


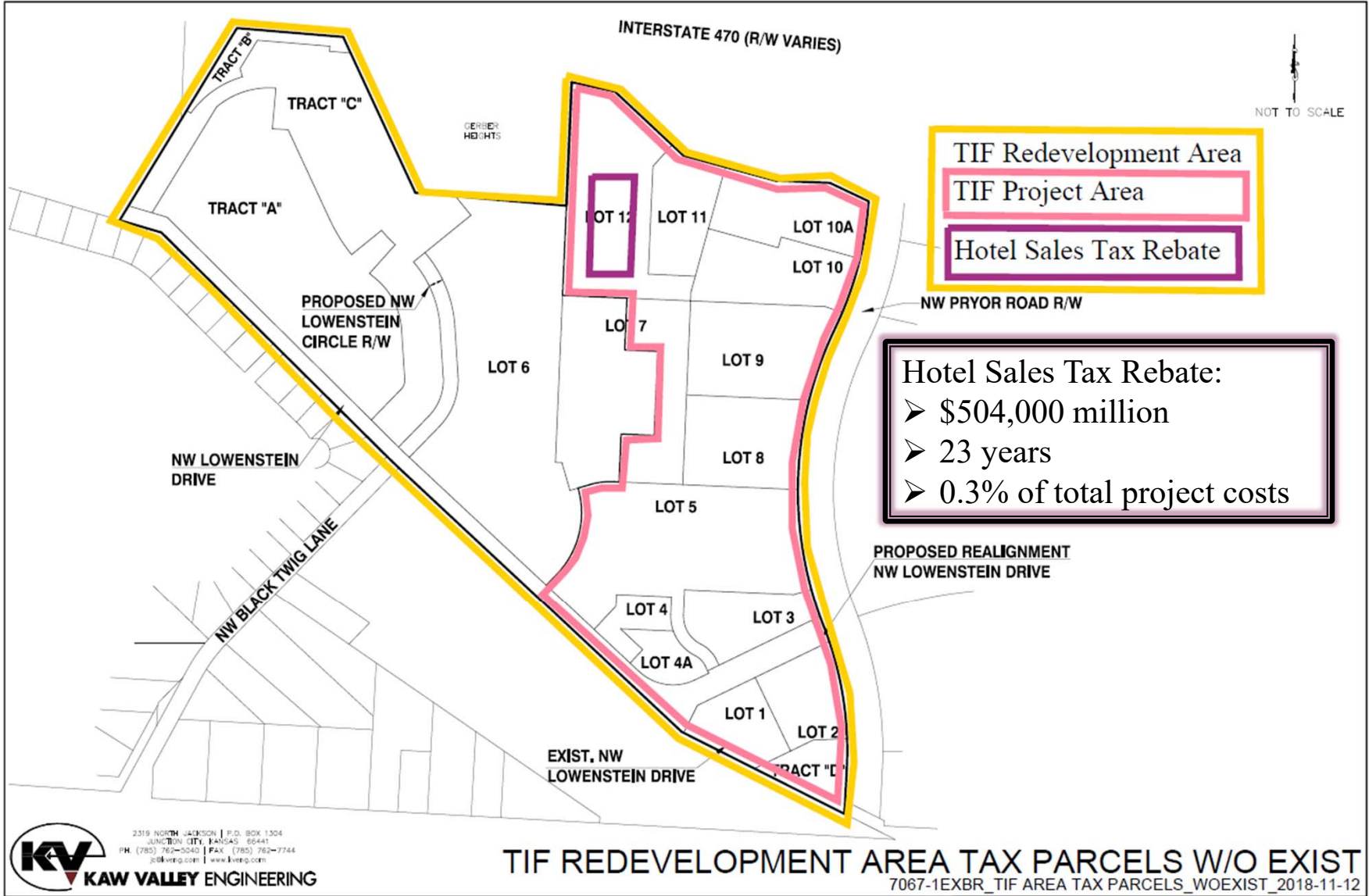
Yours Truly

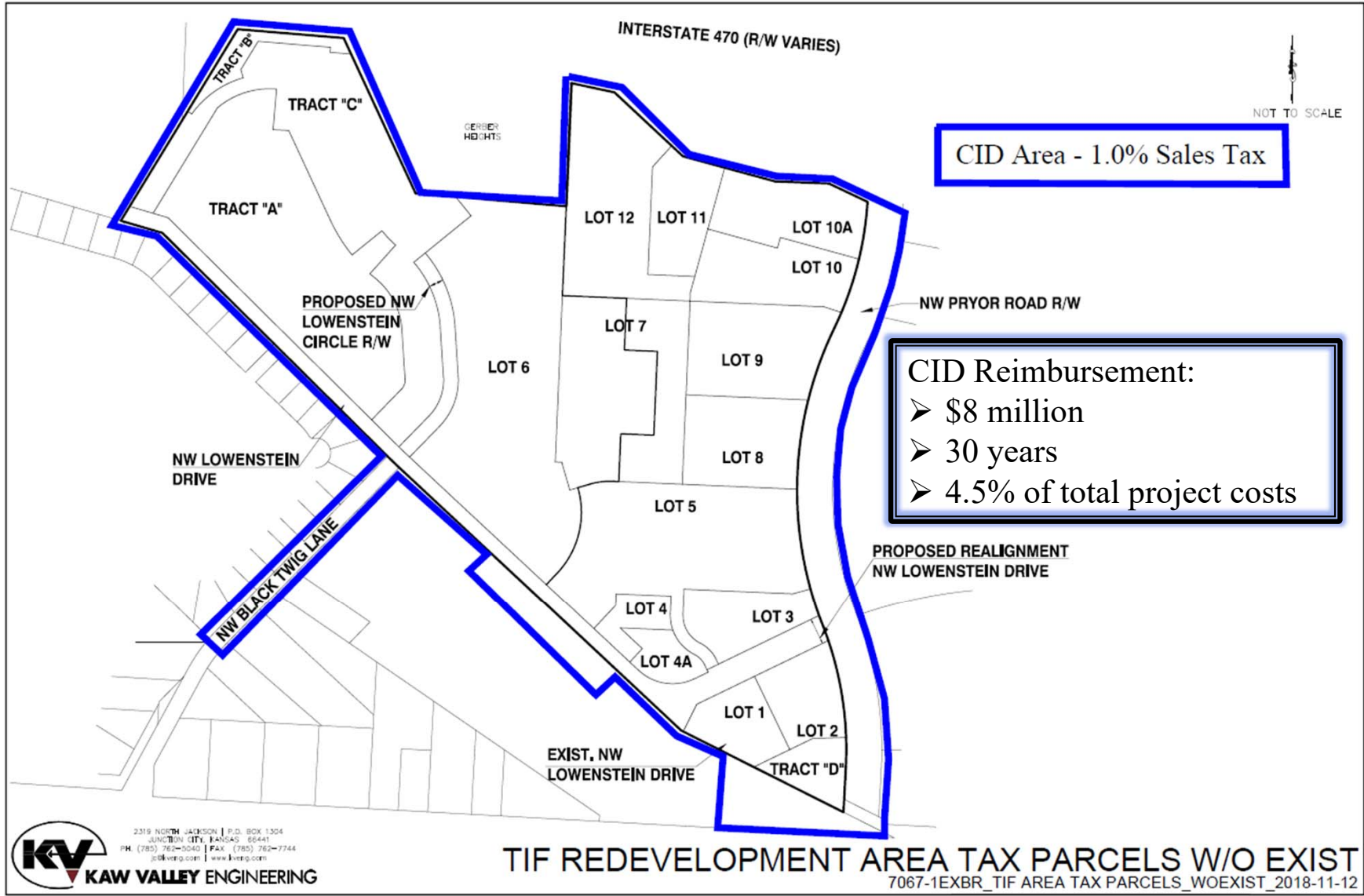
Existing Incentives

Maps from 2018-19
Presentations to City Council



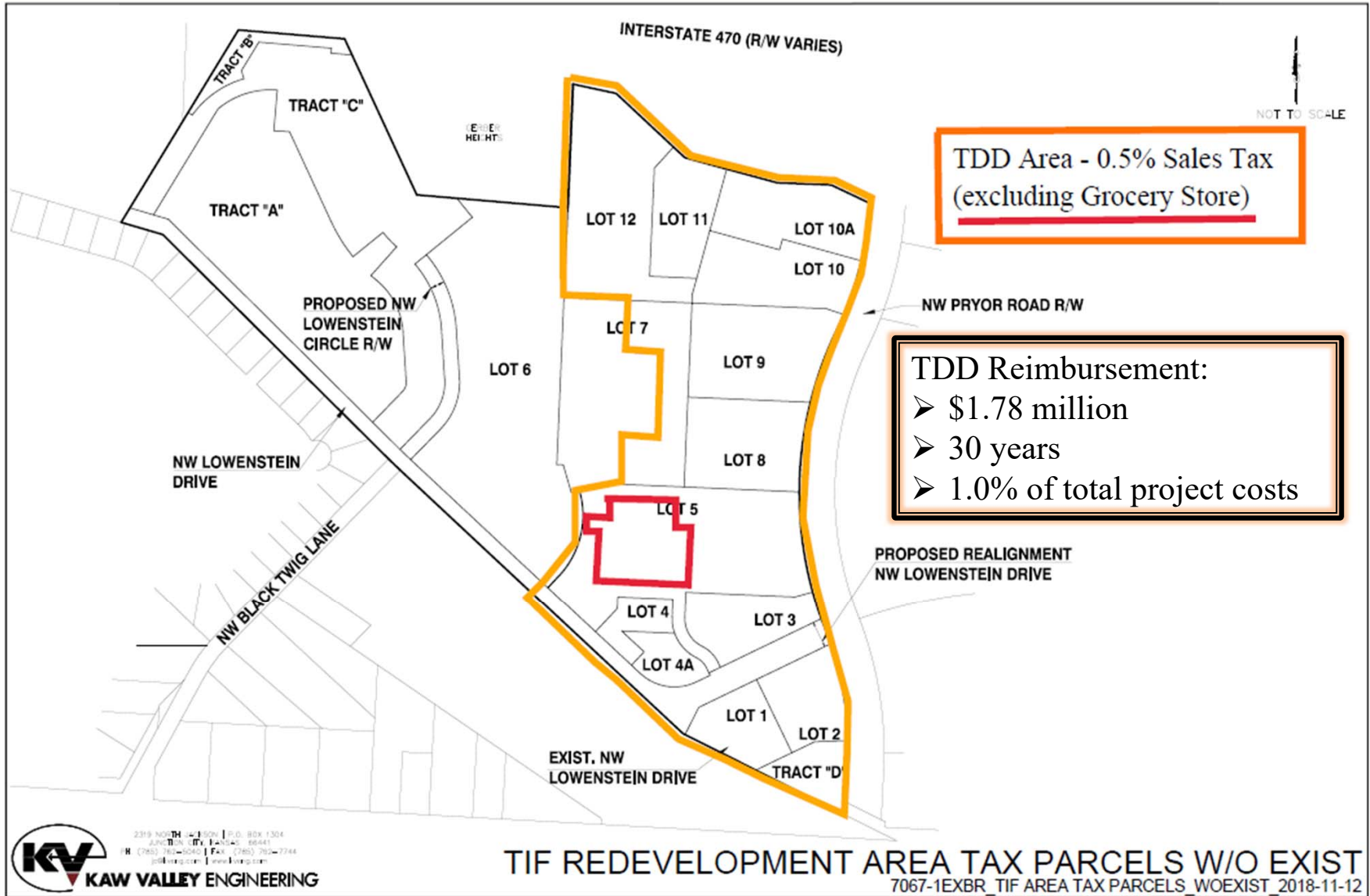


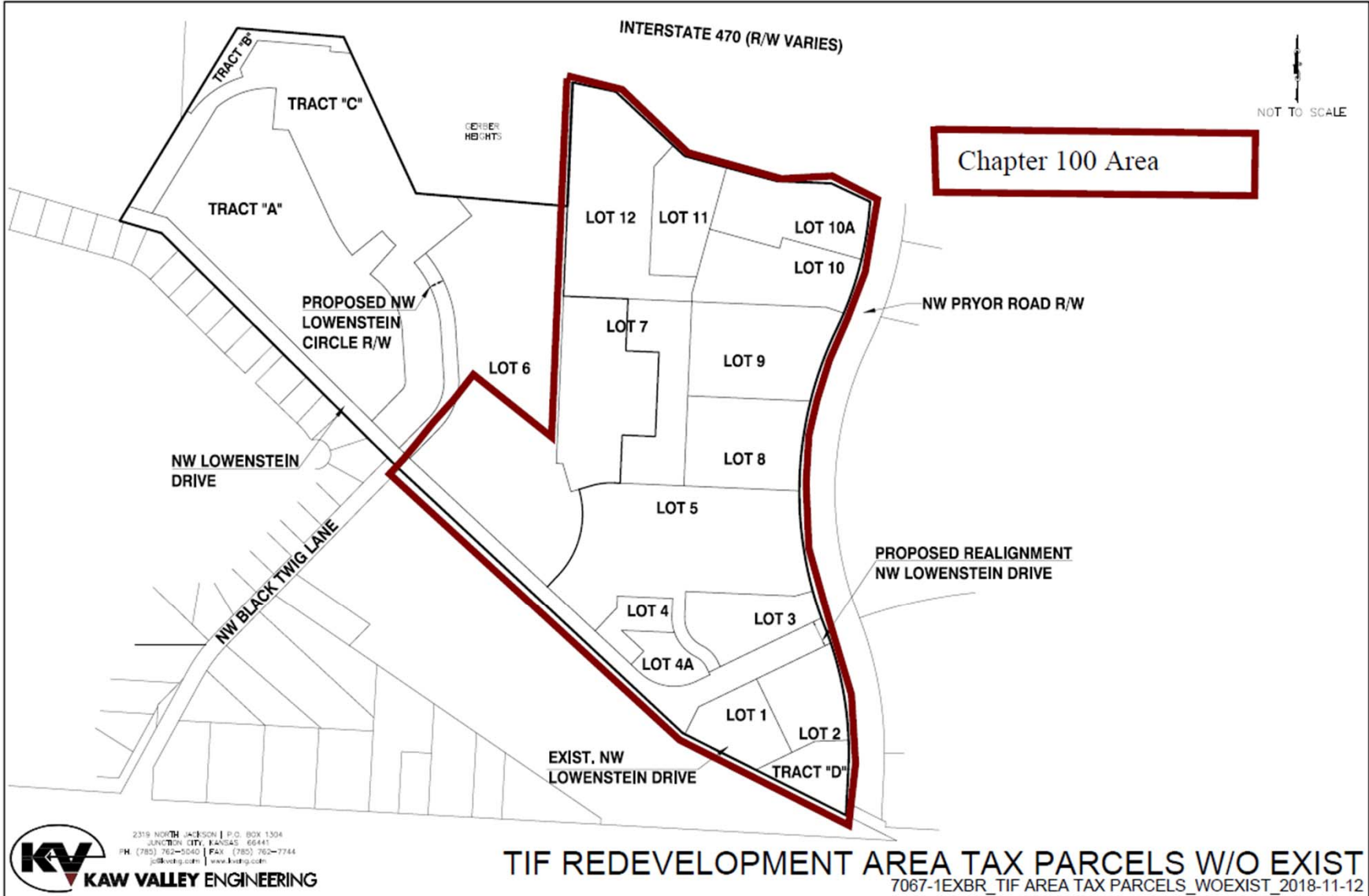


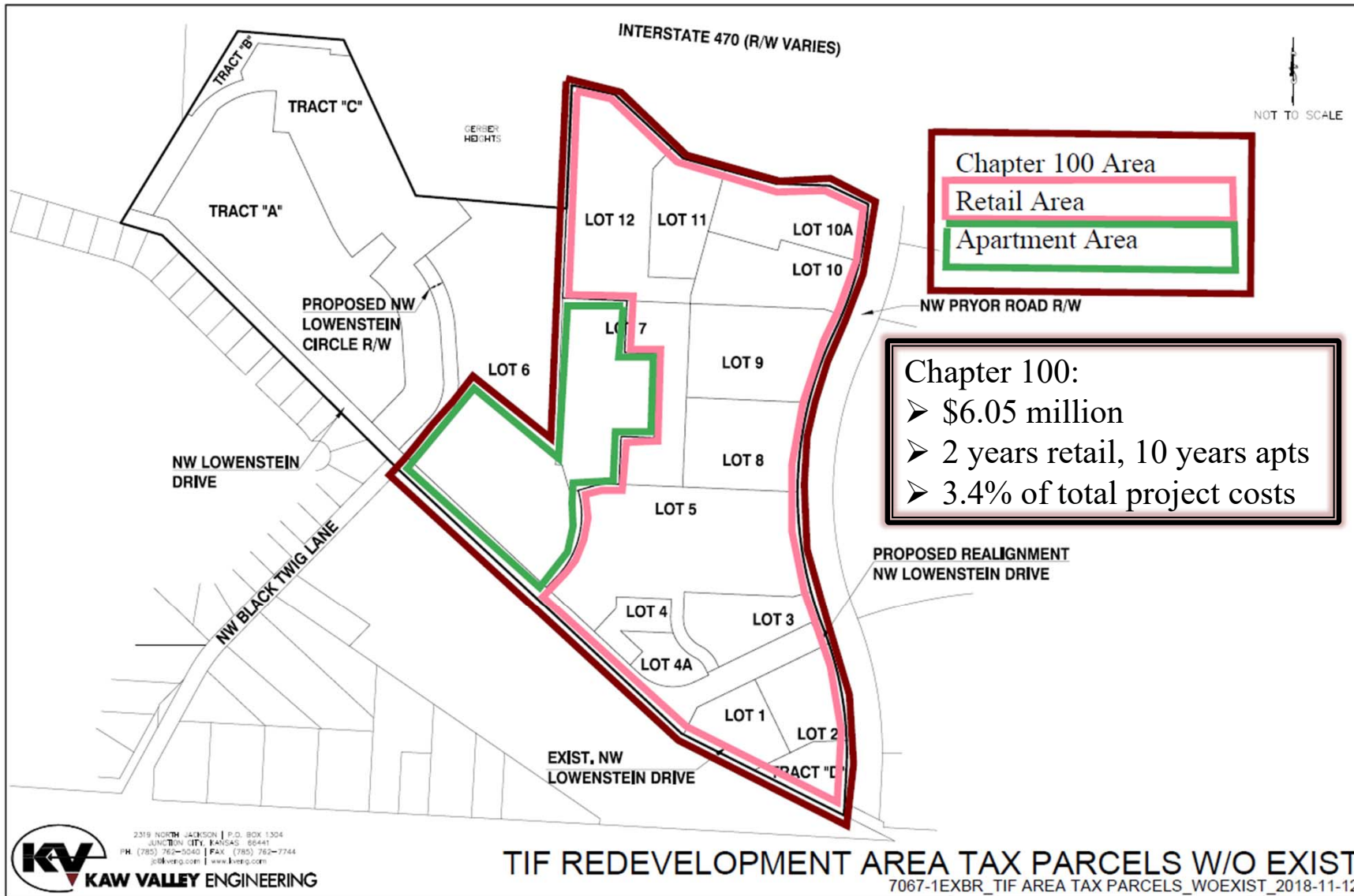


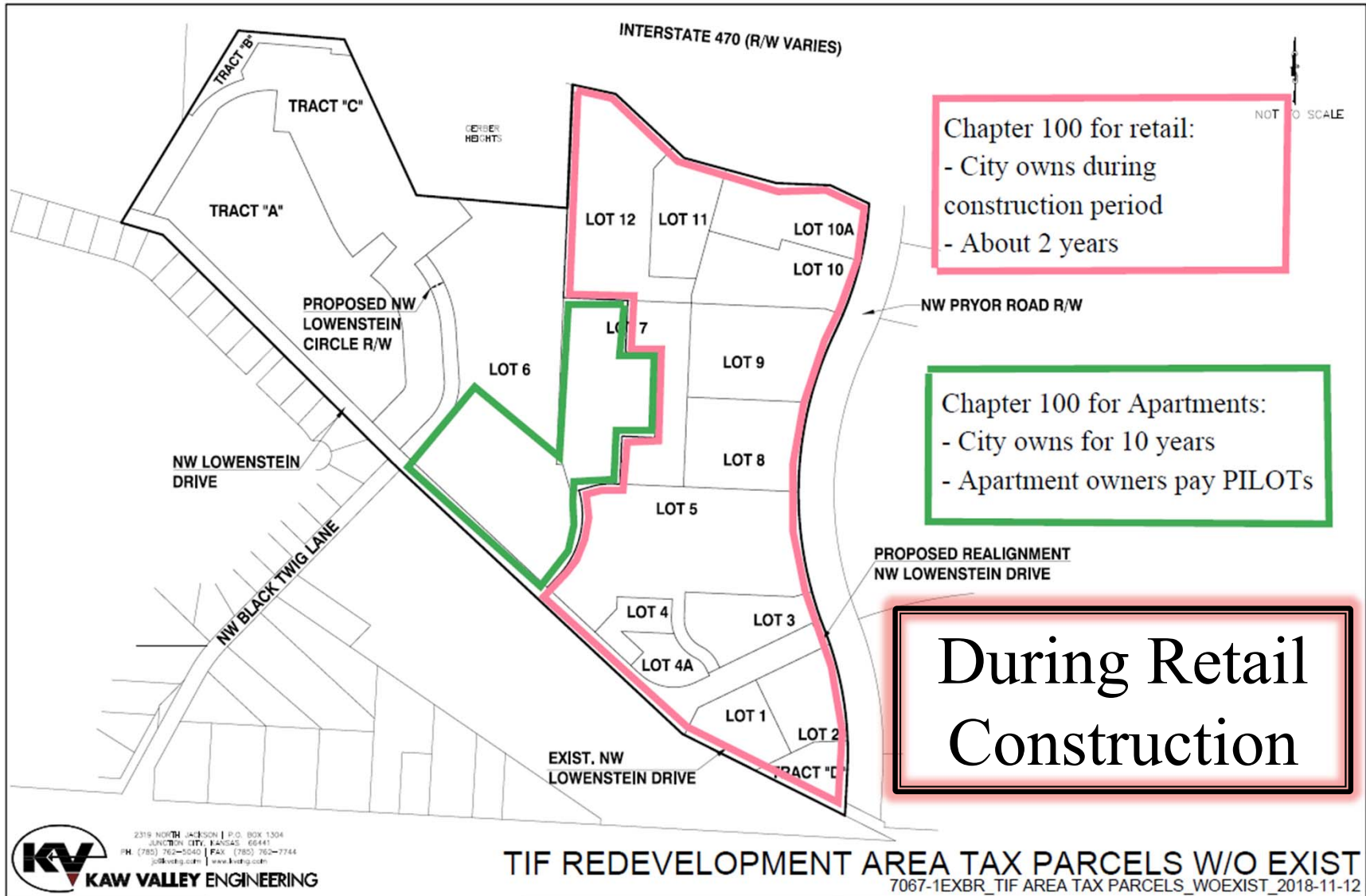
KV KAW VALLEY ENGINEERING
 2319 NORTH JACKSON | P.O. BOX 1304
 JUNCTION CITY, KANSAS 66441
 PH: (785) 762-3040 | FAX: (785) 762-7744
 j@kveeng.com | www.kveeng.com

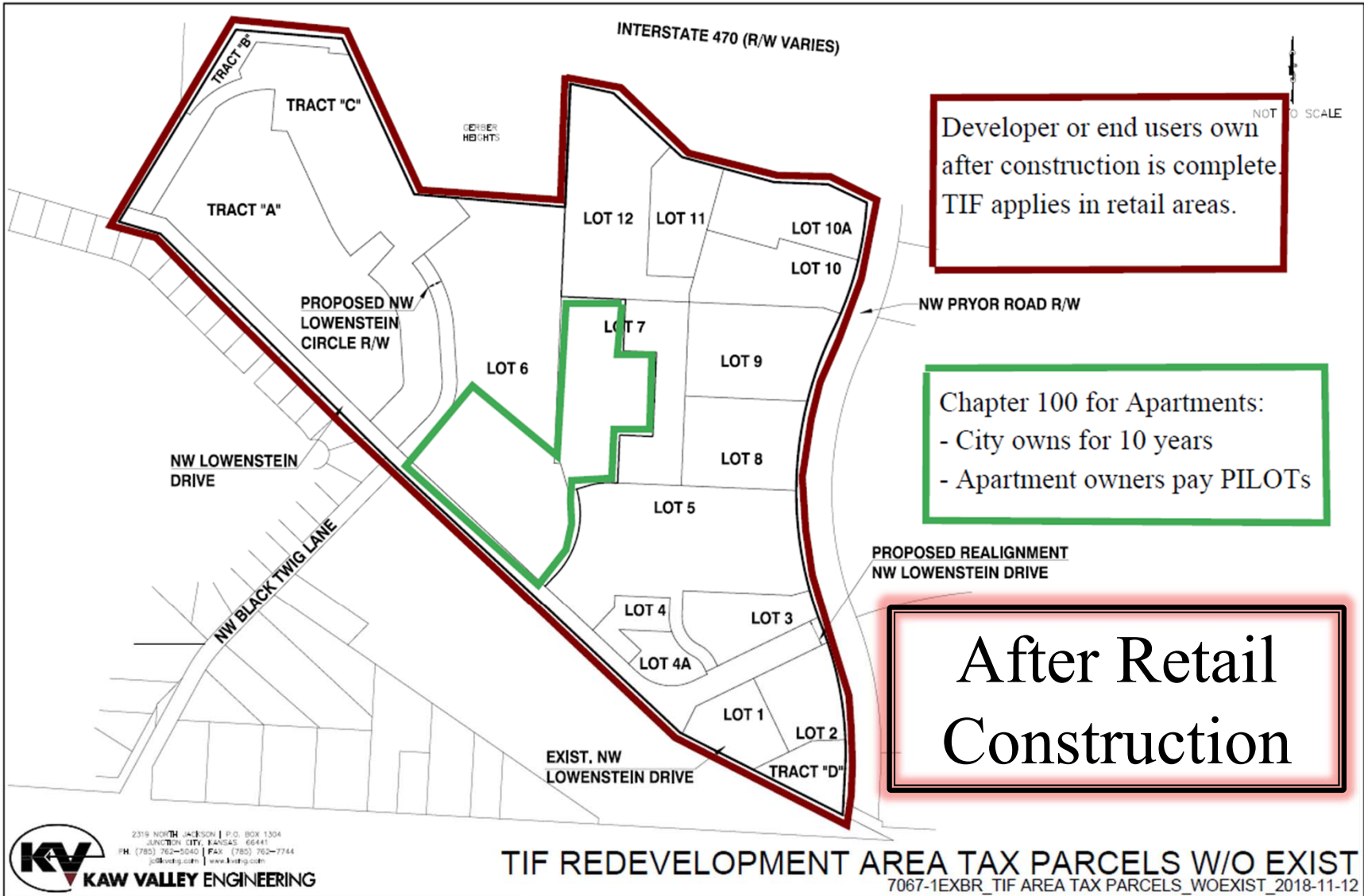






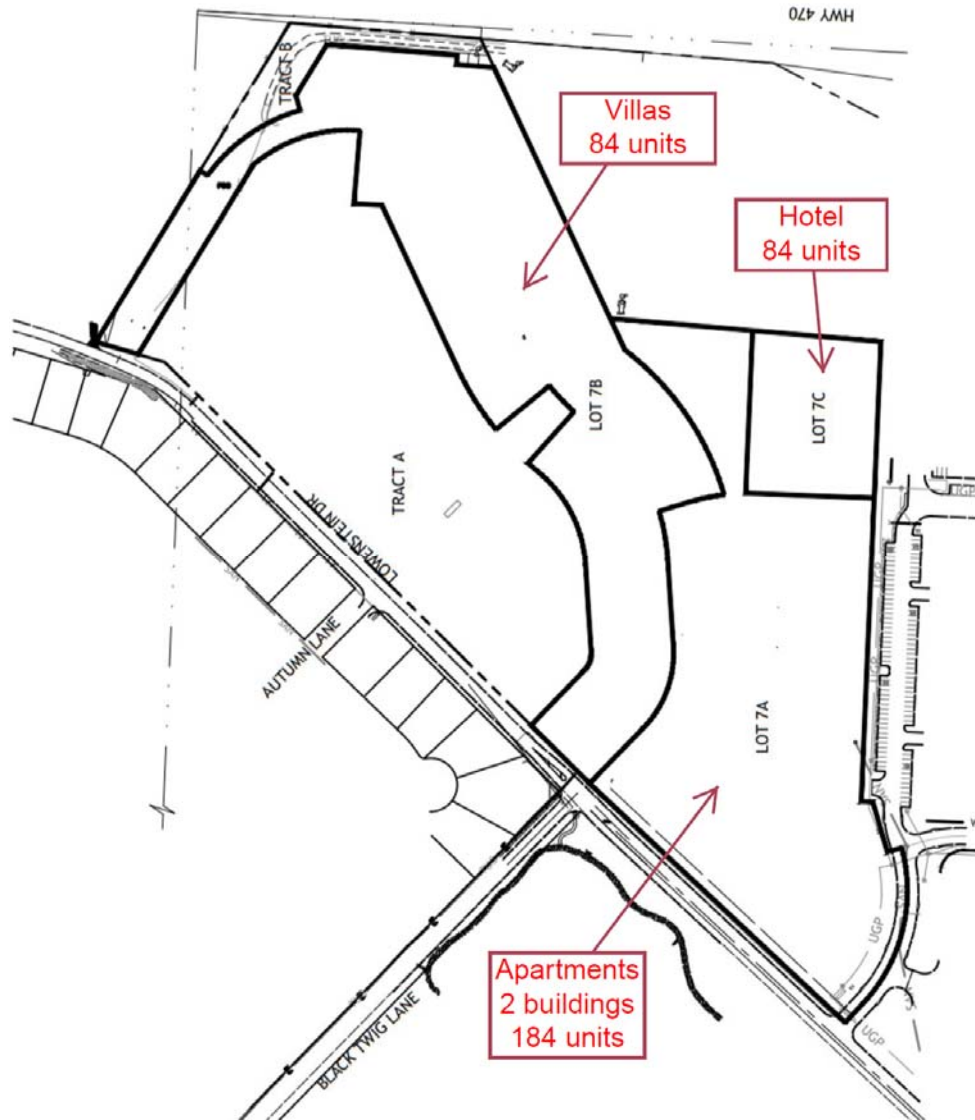




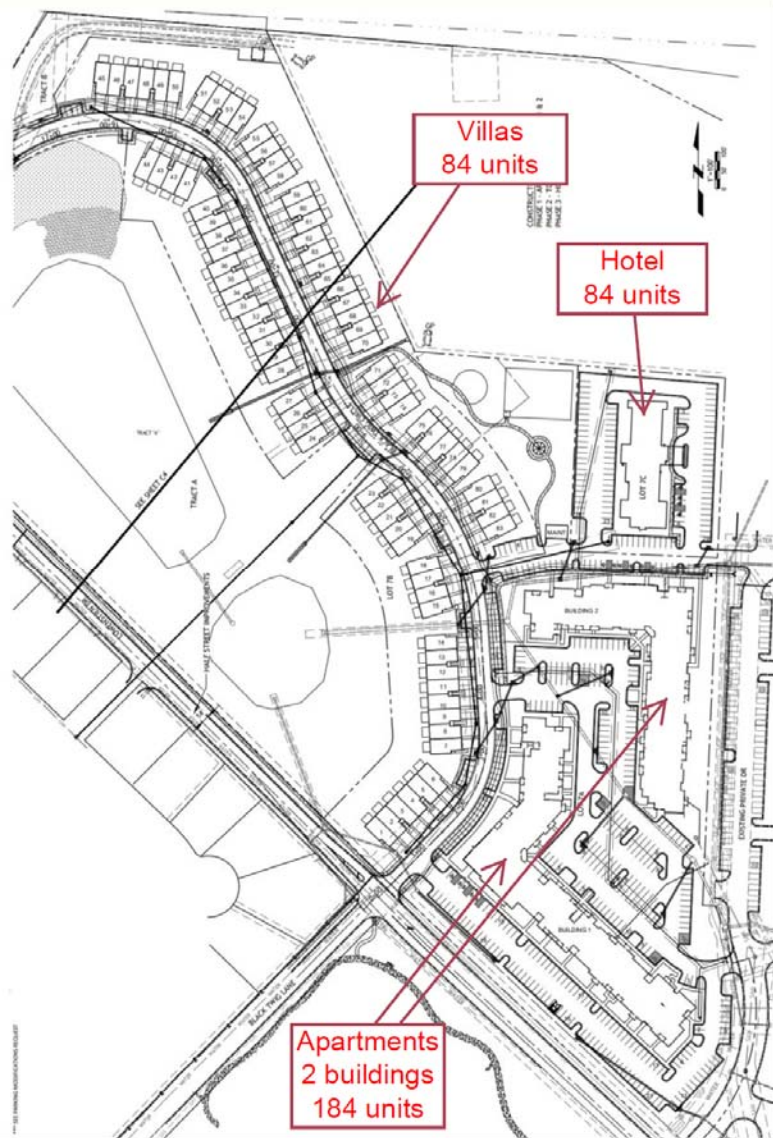


Proposed Revisions

Maps showing proposed changes to western area



Proposed
Revisions to
West Area



Proposed
Revisions to
West Area

Proposed Revisions and Undermined Area

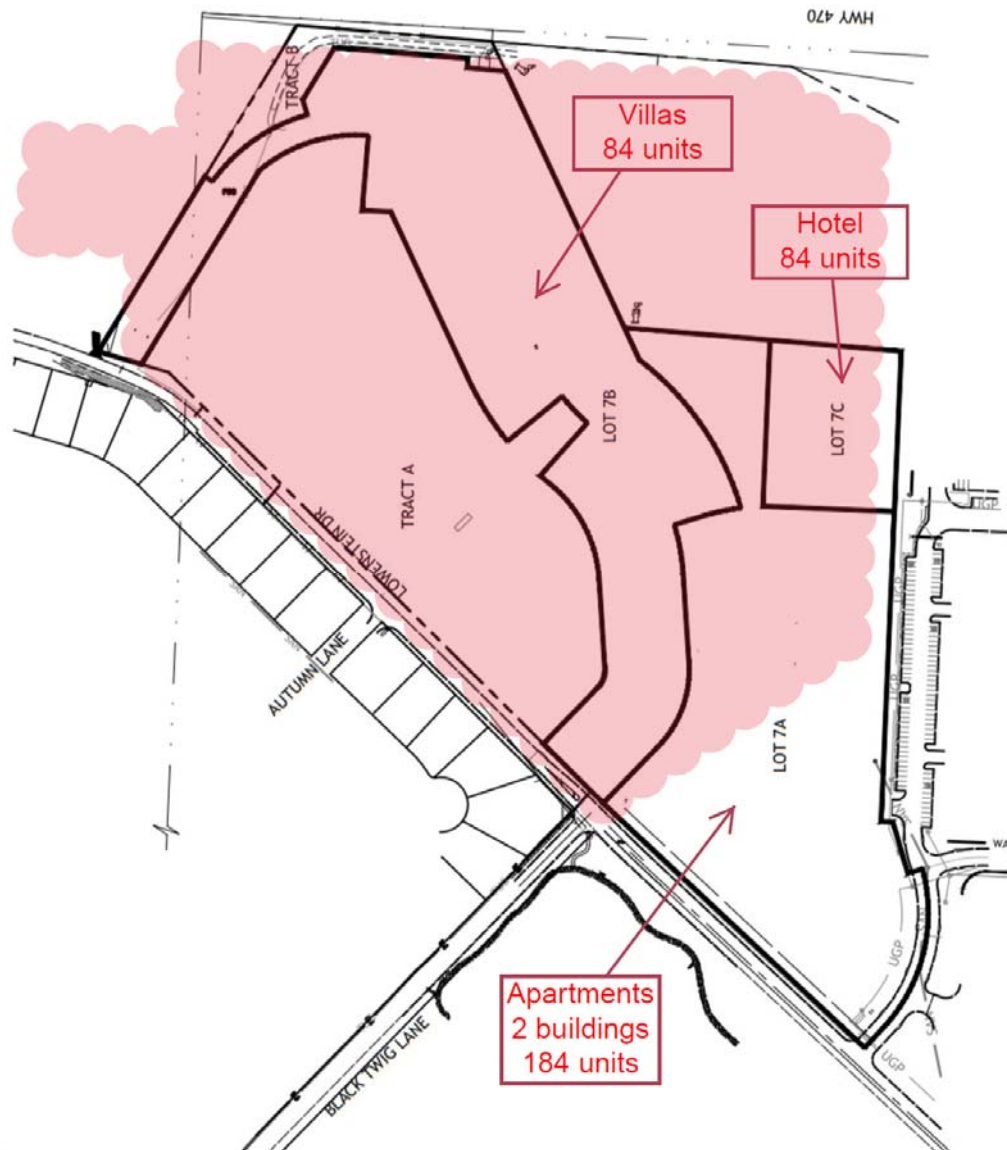
Maps showing proposed changes to western area and undermined area



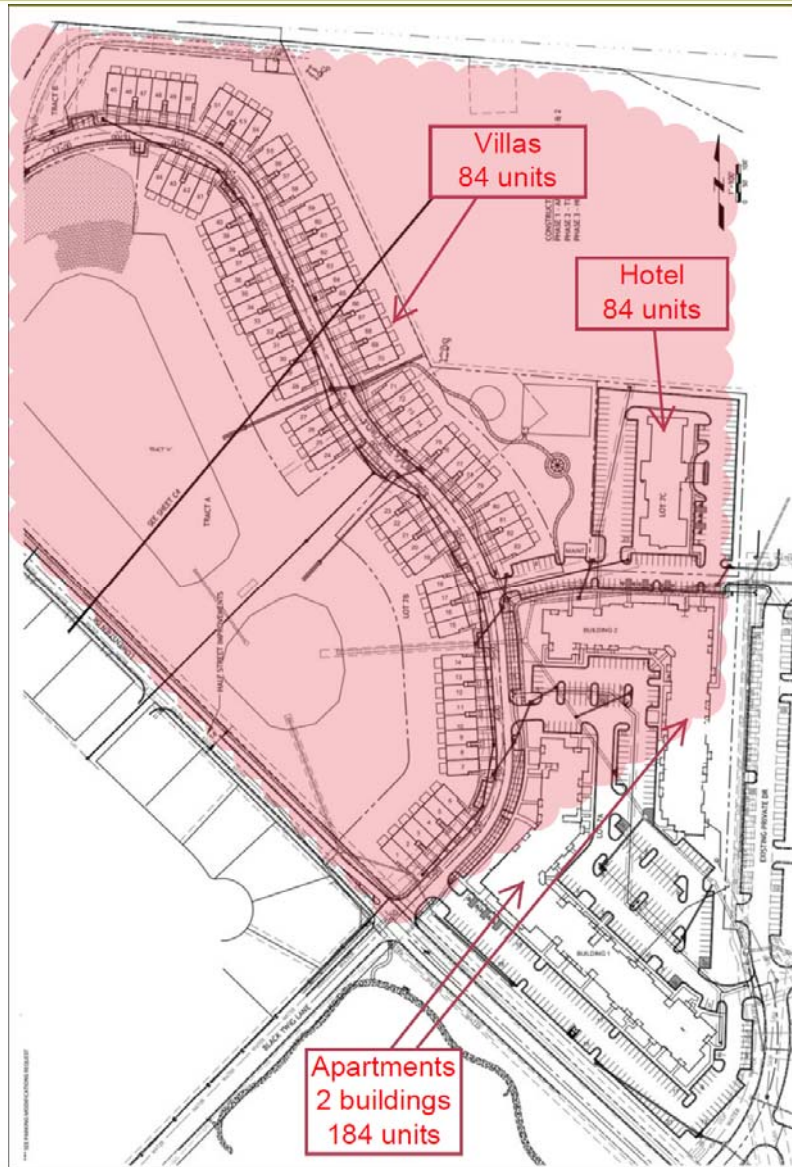
Aerial from Mine Remediation Study, Geotechnology, Inc.



The red line is a rough limits of the water that is present in the mine. This is not a surveyed line, just a rough guess based on my time in the mine over the last couple of months.



Lots with
Undermined
Area



PDP with Undermined Area