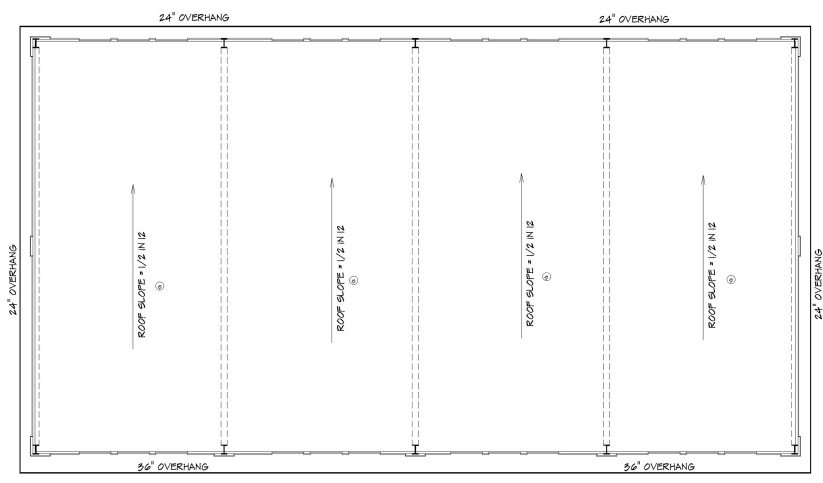


FRONT ELEVATION
3/16" = 1'0"



ROOF ELEVATION
3/52" = 1'0"

- ELEVATIONS NOTES**
- ① STONE: CANYON LEDGE STONE (SANTA FE)
 - ② TEXTURE WALL PANEL: LIGHT GRAY - HEAVY TEXTURE
 - ③ WINDOWS: BLACK METAL
 - ④ SHADOW WALL SIDING: COLOR GRAY STONE
 - ⑤ METAL SIDING: COLOR: COOL GRAY STONE
 - ⑥ GUTTERS/EAVES: D9-BLACK
 - ⑦ OVERHEAD DOOR TRIM: BLACK
 - ⑧ SOFFIT COLOR: SHELL GRAY
 - ⑨ ROOF: GALVALUM

CODE NOTES	GENERAL NOTES
<p>ALL CONSTRUCTION FOR THIS PROJECT SHALL CONFORM TO THE REQUIREMENTS OF THE FOLLOWING CODES ALL AS AMENDED BY THE CITY OF LOS ANGELES:</p> <p>SAS INTERNATIONAL BUILDING CODE SCS NATIONAL ELECTRIC CODE SCS INTERNATIONAL PLUMBING CODE SCS INTERNATIONAL MECHANICAL CODE SCS INTERNATIONAL FIRE CODE & LIFE SAFETY CODE SCS INTERNATIONAL FUEL GAS CODE UNIFIED DEVELOPMENT ORDINANCE</p> <p>SHALL BE IN COMPLIANCE WITH THE AMERICANS WITH DISABILITIES ACT TENANT USE: OCCUPANCY CLASSIFICATION (PRIMARY) GROUP S-1 (SECONDARY) GROUP B</p> <p>TYPE OF CONSTRUCTION (AS BUILT) TYPE IIB AUTOMATIC OPERABLE SYSTEM: N/A TENANT AREA - OFFICE: 1000 SQFT. STORAGE: 8000 SQFT. WAREHOUSE: 8800 SQFT.</p> <p>OCCUPANT LOAD (TABLE 1024.1.1) OFFICE: 100/SQFT = 10 WAREHOUSE: 88/SQFT = 11</p> <p>PLUMBING REQUIREMENTS (TABLE 2102.2) USE GROUP B WATER CLOSET - 1 (COMMERCIAL) PER 60" = 1 SERVICE BATH - 1 PER USE = 1 BREAK ROOM - 1 PER USE = 1 USE GROUP S-1 WATER CLOSET - 1 (COMMERCIAL) PER USE = 1 SERVICE BATH - 1 PER USE = 1 BREAK ROOM - 1 PER USE = 1</p>	<p>1. ALL DIMENSIONS HERE TO HERE WALL UNLESS OTHERWISE NOTED</p> <p>2. CONTRACTOR SHALL FIELD VERIFY ALL DIMENSIONS IN THE FIELD AND NOTIFY THE OWNER OF ANY DISCREPANCIES BEFORE PROCEEDING</p> <p>3. PROVIDE SIX BLOOMS IN ALL WALLS AS REQUIRED FOR SUPPORT</p> <p>4. CONTRACTOR TO FIELD COORDINATE, INSTALL, ETC. ALL OVERHEAD WALLS WITH OWNER</p> <p>5. COORDINATE ALL FINAL OUTLET, WALL AND FLOOR LOCATION W/ OWNER BEFORE CONSTRUCTION</p> <p>6. COORDINATE ALL FINISHES WITH OWNER</p> <p>7. PROVIDE FIRE EXTINGUISHERS AS REQUIRED BY FIRE MARSHAL</p> <p>8. FIELD VERIFY ALL DIMENSIONS AND SITE CONDITIONS</p> <p>9. CONTRACTOR TO COORDINATE W/ OWNER ON ALL ITEMS SUPPLIED AND APPROVE THE CONSTRUCTION WORK</p> <p>10. NEW WALL CONSTRUCTION SHALL BE 24-GAUGE STEEL, TRUCK AND BLOOMS, STEPS SHIT 24" OC W/ 1/2" SHEETM BOARD WALL STUDS SHALL BE PROVIDED IN ACCORDANCE WITH OTHER ASDI OR ASDI SUP</p> <p>11. WALL COVERING IN PROPOSED BATHROOM TO HAVE TILE OR OTHER NONMANAGEMENT SURFACING TO A HEIGHT NOT LESS THEN 4'0" GWT</p>

