

EXHIBIT "A"
(1 of 2)

File No. 020-0103
Lee's Summit School District #7
Middle School #4
June 6, 2021

Owner:
City of Lee's Summit, MO

Partial Vacation of 15th Street Right-of-Way:

A portion of the 15th Street Right-of-Way, as established with Newberry Third Plat, Lots 165 thru 201 & Lots 250 thru 253 and Tract A, a subdivision in the City of Lee's Summit, Jackson County, Missouri, and as described by Timothy Blair Wiswell, Professional License No. 2009000067 of Olsson, Inc., and being more particularly described as follows:

Right-of-Way Vacation Description:

BEGINNING at the Southeast corner of Lot 165, of said Newberry Third Plat, Lots 165 thru 201 & Lots 250 thru 253 and Tract A, said point also being on the North Right-of-Way line of 15th Street, as established with said plat.

thence South 02 degrees 20 minutes 18 seconds West, along the East line of said plat, a distance of 50.00 feet, to the Northeast corner of Lot 196 of said plat, said point also being on the South Right-of-Way line of said 15th Street;

thence North 88 degrees 02 minutes 17 seconds West, on the North line of said Lot 196, and on the South Right-of-Way line of said 15th Street, a distance of 106.24 feet, to a point of curvature;

thence Westerly, Southwesterly, and Southerly, continuing on the North line of said Lot 196 and on the South Right-of-Way line of said 15th Street, and on a curve to the left, having a radius of 14.00 feet, and through a central angle of 89 degrees 37 minutes 51 seconds, an arc length of 21.90 feet, to a point on the East Right of Way line of Dalton Drive, as established with said plat;

thence North 02 degrees 19 minutes 52 seconds East, on the Northerly prolongation of the East Right-of-Way line of said Dalton Drive, a distance of 78.00 feet, to the point of intersection of the North Right-of-Way line of said 15th Street, and the East Right-of-Way line of said Dalton Drive, said point also being on the South line of said Lot 165, said point also being on a curve;

EXHIBIT "A"
(2 of 2)

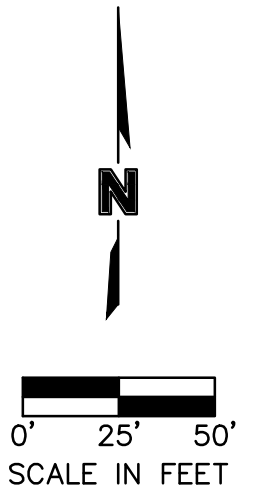
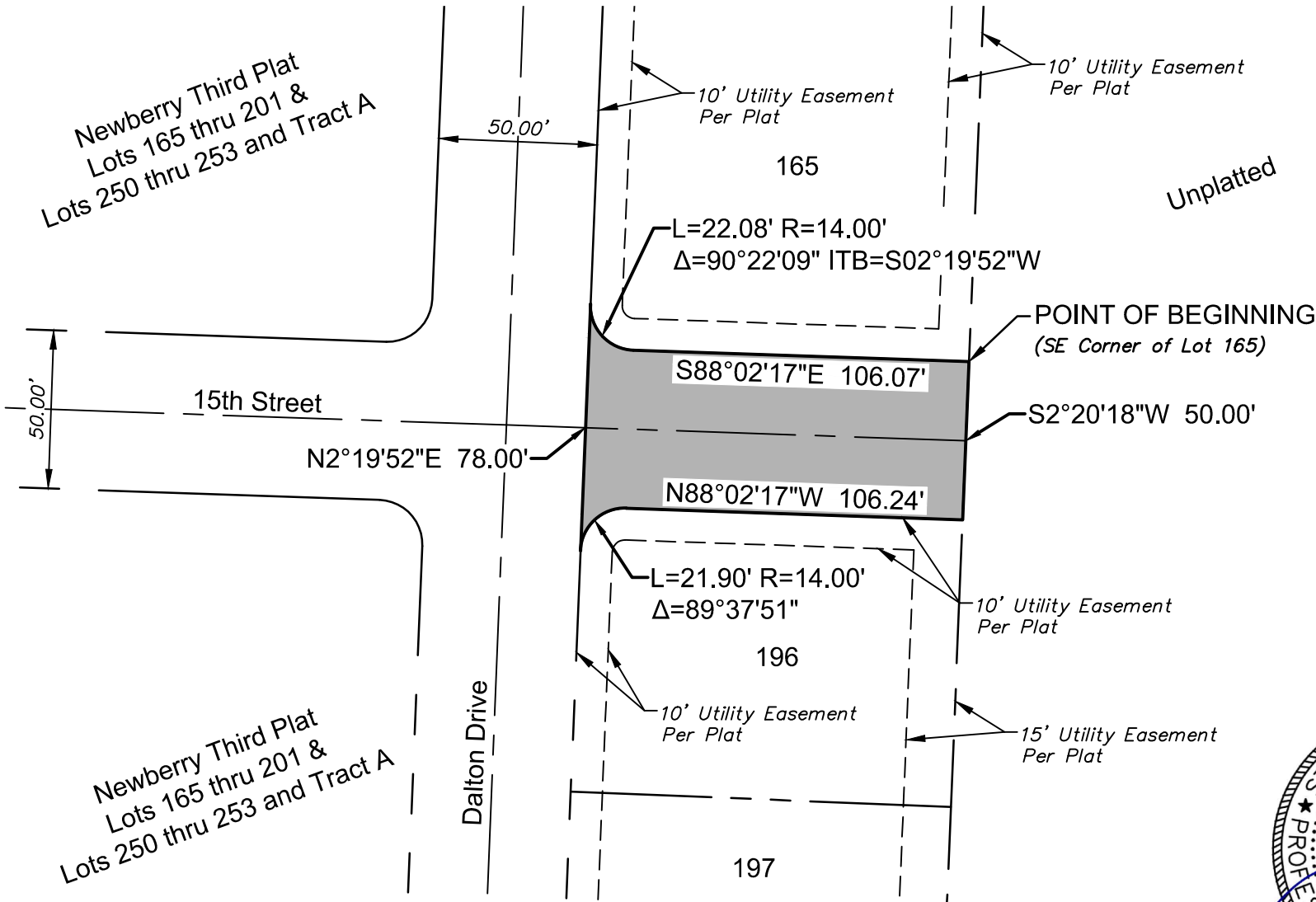
thence Southerly, Southeasterly, and Easterly, on the South line of said Lot 165 and on the North Right-of-Way line of said 15th Street, and on a curve to the left, whose initial tangent bearing is South 02 degrees 19 minutes 52 seconds West, having a radius of 14.00 feet, and through a central angle of 90 degrees 22 minutes 09 seconds, an arc length of 22.08 feet, to a point of tangency;

thence South 88 degrees 02 minutes 17 seconds East, continuing on the South line of said Lot 165 and on the North Right-of-Way line of said 15th Street, a distance of 106.07 feet, to the POINT OF BEGINNING, containing 6,092 square feet or 0.1399 acres, more or less.



Olsson Associates
7301 West 133rd Street
Suite 200
Overland Park, KS 66213
(913) 381-1170

EXHIBIT "B"



Right-of-Way (ROW) Vacation Area: ±6,092 sq. ft. or 0.1399 acres.



PROJECT NO:	020-0103
DRAWN BY:	TLF
DATE:	06/04/2021

Partial 15th Street Right-of-Way Vacation, being part of
 Newberry Third Plat Lots 165 thru 201 & Lots 250 thru 253 and Tract A
 a Subdivision in the City of Lee's Summit, Jackson County, Missouri

olsson
 7301 West 133rd Street
 Suite 200
 Overland Park, KS 66213-4750
 TEL 913.381.1170