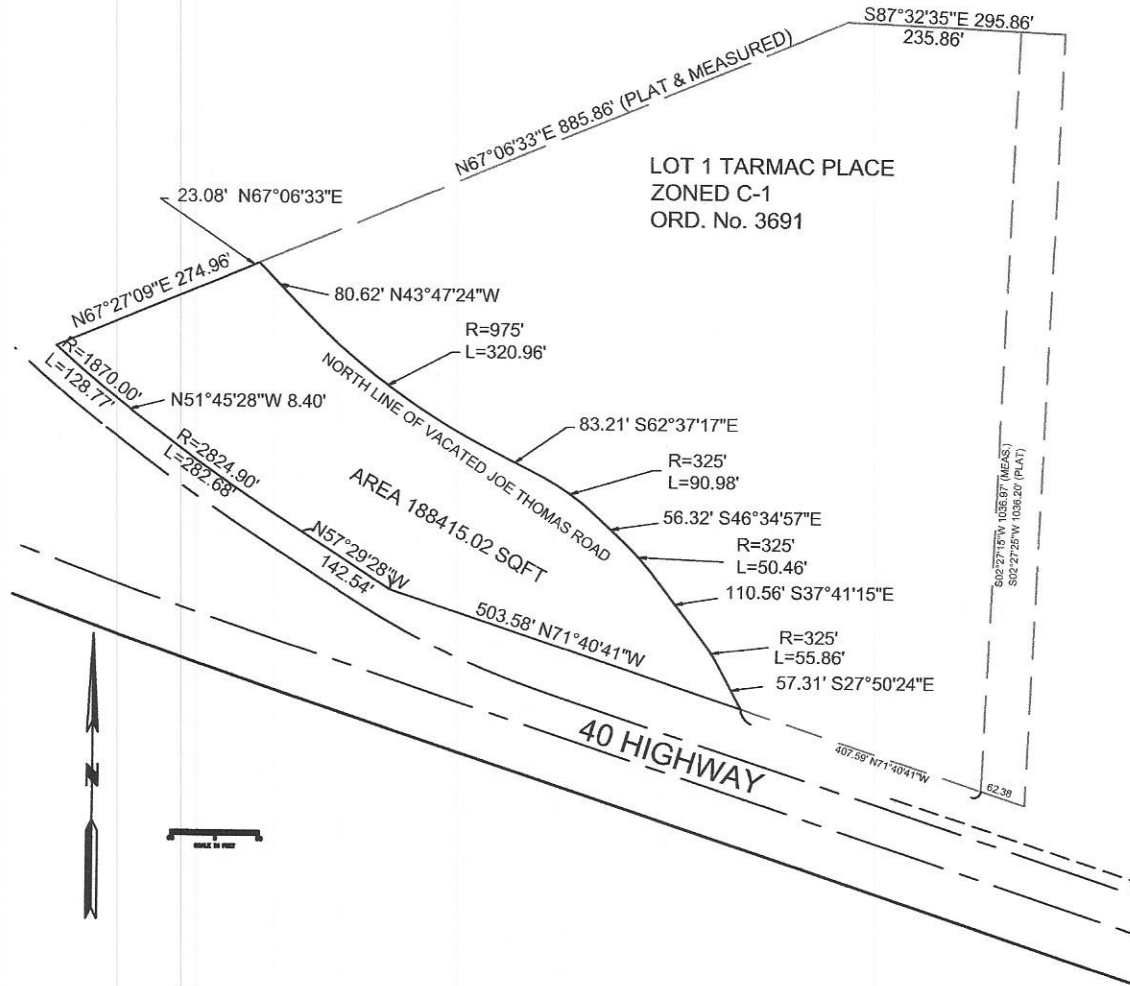
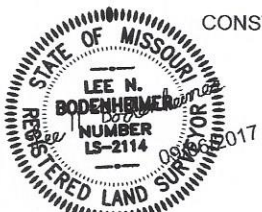


# REZONING MAP



All that part of Lot 1, TARMAC Place, Lees Summit, Jackson County, Missouri, beginning at the most westerly corner of Lot 1 Tarmac place; thence North 67 degrees 27 minutes 9 seconds East a distance of 274.96 feet; thence North 67 degrees 6 minutes 33 seconds East a distance of 23.08 feet; thence South 43 degrees 47 minutes 24 seconds East a distance of 80.62 feet; thence along a curve to the left with a radius of 975 feet and a length of 320.46 feet; thence South 62 degrees 37 minutes 17 seconds East a distance of 83.21 feet; thence along a curve to the right with An initial tangent bearing of South 62 degrees 32 minutes 1 second East, a radius of 325 feet and a length of 90.98 feet; thence South 46 degrees 34 minutes 57 seconds East a distance of 56.32 feet; thence along a curve to the right with a radius of 325 feet and a length of 50.46 feet; thence South 37 degrees 41 minutes 15 seconds East a distance of 110.56 feet; thence along a curve to the right with a radius of 325.00 feet and a length of 55.86 feet; thence South 27 degrees 50 minutes 24 seconds East a distance of 57.31 feet; Thence North 71 degrees 40 minutes 41 seconds West a distance of 503.57 feet; thence North 57 degrees 29 minutes 28 seconds West a distance of 142.54 feet; thence along a curve to the right having a radius of 2824.90 feet and a length of 282.68 feet; thence North 51 degrees 45 minutes 28 seconds East a distance of 8.4 feet; thence along a curve to the right with a radius of 1870.00 feet and a length of 128.77 feet to the point of beginning. Containing; 188,415.02 feet.

LEE BODENHEIMER, P.E., L.S.  
Professional Engineer - Land Surveyor



CONSTRUCTION ENGINEERING SERVICES, INC.  
16810-C East 40 Highway  
Independence, MO 64055  
(816)478-2323  
lee@engineeringkc.com  
SCALE: 1"=60'  
DATE: 9/6/2017  
JOB NO: TARMAC