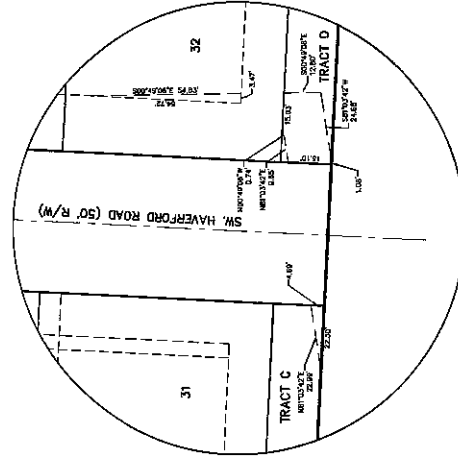
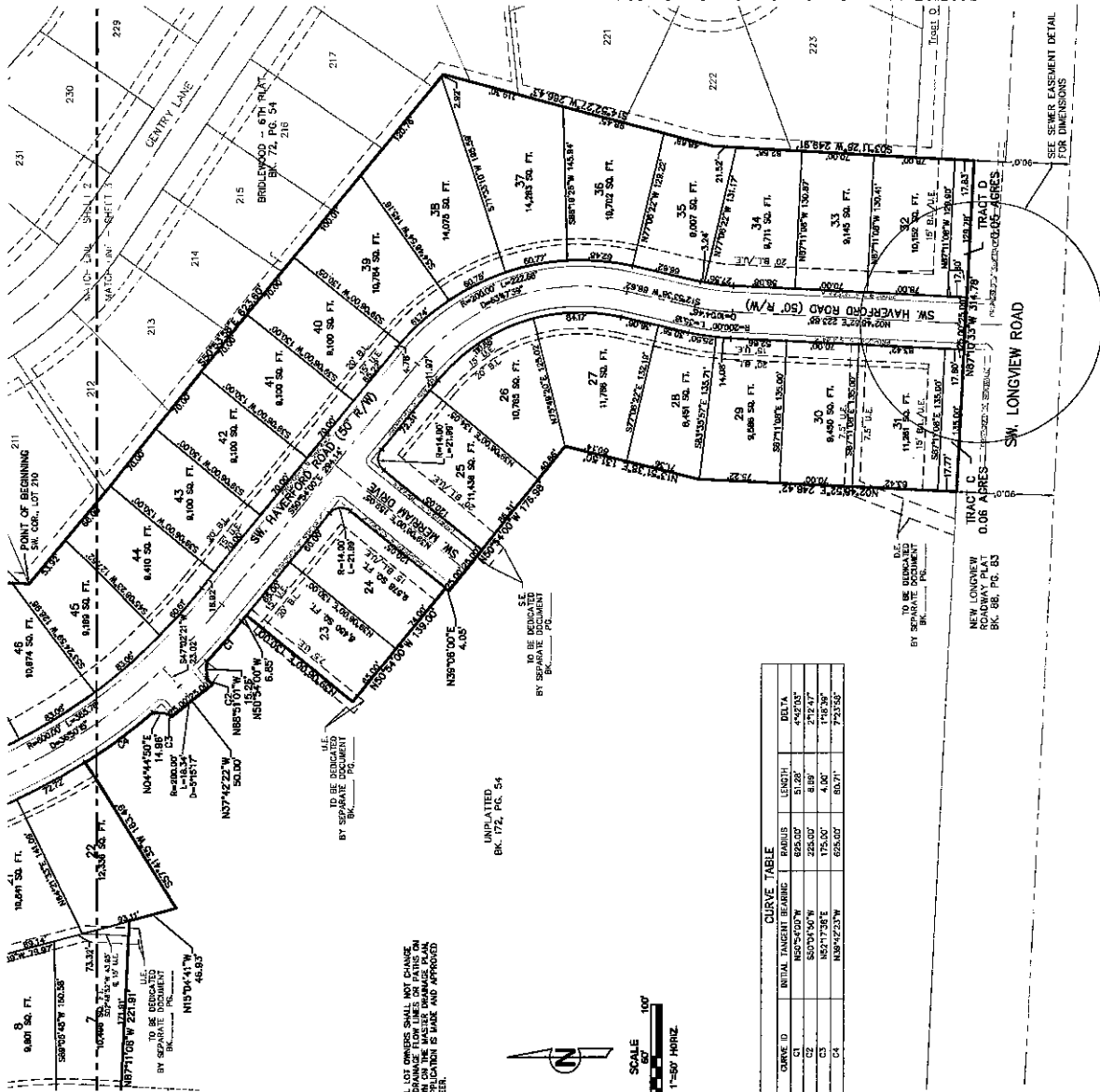


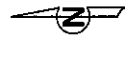
**FINAL PLAT OF
KESSLER RIDGE AT NEW LONGVIEW - FIRST PLAT
LOTS 1-55 AND TRACTS A THRU D
NW 1/4, SEC. 10 - TWP. 47 N. - Rgs. 32 W.
LEES SUMMIT, JACKSON COUNTY, MISSOURI**



SEWER EASEMENT DETAIL
SCALE: 1"=20'

* NOTE: MATERIAL LOT OWNERS SHALL NOT CHANGE THE BOUNDARIES OF THE LOTS AS SHOWN ON THIS MASTER PLAT. ANY CHANGES TO THE BOUNDARIES MUST BE MADE AND APPROVED BY THE CITY ENGINEER.

UNPLATTED
BK. 172, PG. 54



SCALE
1"=50' HORIZ.

CURVE ID	INITIAL TANGENT BEARING	RADIUS	LENGTH	DELTA
C1	N50°42'23"W	625.00'	51.28'	4°42'03"
C2	S80°01'50"W	225.00'	8.89'	2°12'47"
C3	N52°17'38"E	175.00'	4.00'	1°02'39"
C4	N59°42'23"W	625.00'	50.71'	7°23'58"

This is to certify that the within plat of KESSLER RIDGE AT NEW LONGVIEW - FIRST PLAT, LOTS 1-55 AND TRACTS A THRU D, was submitted to and duly approved by the Mayor and City Council of the City of Lees Summit, Missouri this _____ day of _____, 2018, by Ordinance No. _____.

- APPROVED: _____ Date _____
 City Engineer
- APPROVED: _____ Date _____
 Robert G. Macko, AICP
 Director of Planning & Code Administration
- APPROVED: _____ Date _____
 Michael L. Rounds
 Mayor
- APPROVED: _____ Date _____
 Fred Danzore
 Planning Commission Secretary
- APPROVED: _____ Date _____
 Debra R. Chisholm
 City Clerk
- APPROVED: _____ Date _____
 Vincent E. Kelly
 Jackson County GIS

This plat and survey of KESSLER RIDGE AT NEW LONGVIEW - FIRST PLAT, LOTS 1-55 AND TRACTS A THRU D, were prepared by Lutjen, Inc., 1301 Burlington Street, P.O. Box 1000, Lees Summit, Missouri 64061. I HEREBY CERTIFY that the plat of KESSLER RIDGE AT NEW LONGVIEW - FIRST PLAT, LOTS 1-55 AND TRACTS A THRU D, was prepared in accordance with the laws of the State of Missouri and that I am a duly licensed Professional Surveyor and Landscaping Architect in the State of Missouri. I am not providing any professional services or opinions, and I am not responsible for the accuracy of the information provided herein. The plat and survey were prepared in accordance with the professional knowledge and skill of the surveyor and the best of my ability.



APPROVED: _____ Date _____
 Mayor S. J. Hines
 Mayor, City of Lees Summit, Missouri
 Ordinance No. _____