

Street Light
Resolution Update
City of Lee's Summit
September 2022

Brad Cooley, PE, RSP1
Senior Staff Engineer

Presentation Outline

1. Street Light Resolution/Policy
2. Summary of Existing Street Lighting
3. City-Owned and Leased Lighting Plan
4. Process for Installing New Street Lighting
5. Maintenance Process and Responsibility
6. Status of Existing Agreements
7. Impacts of the Resolution/Policy Changes

Street Light Resolution/Policy

- Initial Resolution 86-24
- Existing Resolution 06-04
 - Include HPS fixtures on metal poles and underground wiring.
- Proposed Resolution 22-XX
 - Establishes standalone policy outside of the resolution.
 - Updates to “base” and “upgraded” lighting.

Existing Street Lighting – City-Owned

- City Lighting System
 - Continuous lighting along arterials and non-residential collectors
 - Installed with Capital Projects or Development Projects
- City Lighting Standards
 - Design and Construction Manual (DCM)
- City Street Light Inventory
 - Approximately 2,000 Street Lights
 - Approximately 50% are LED

Existing Street Lighting - Leased

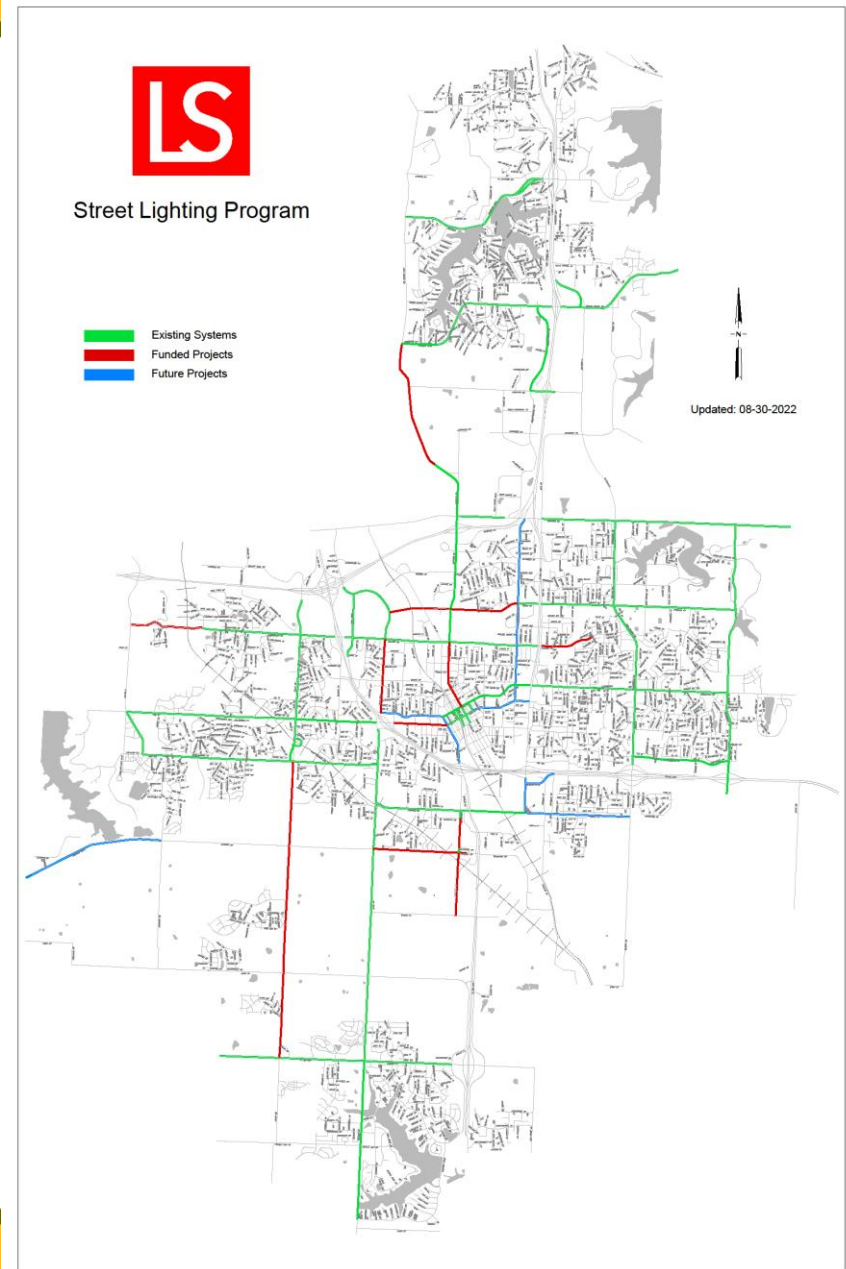
- Leased Street Light System
 - Residential Street Lighting
 - Est. 1952 to Date: MPS, Aquila, KCPL, Evergy
- Leased Street Lighting Standards
 - Resolution 86-24: 150W on Wood Pole (Pre-2006 Std.)
 - Resolution 06-04: 150W on Metal Pole (06'-Current Std.)
- Leased Street Light Inventory
 - Approximately 4,250 Total Leased Street Lights
 - Approximately 2,700 “Wood Pole” Standard Lights
 - Approximately 1,550 “Metal Pole” Standard Lights
 - All changed to LED by the Utility from MV or HPS

Existing Street Lighting - Leased



City-Owned Lighting System

- Planned Locations
- Existing, Funded, and Future Projects



Process for Installing New Street Lighting

- City-Owned
 - Planned Locations
 - Designed Systems for “Continuous” Lighting
 - Capital Improvement Project(s)
 - City installed (contracted)
 - Most recently: Shenandoah and Lakewood Blvd.
 - Rarely, but possibly installed in association with Large Scale Development Projects involving arterials and non-residential collector construction or reconstruction.
 - Metered systems with City coordinated Utility connections.

Process for Installing New Street Lighting

- Leased
 - New development and existing neighborhoods.
 - RFI issued to Evergy requesting approx. locations
 - Evergy provides feasible locations based on available power sources
 - Dedication/donation of easements
 - Informal petitioned support of impacted residents in existing neighborhoods
 - City authorizes installation
 - Evergy performs all installation. Utility installation cost recovery included in City lease payments.

(Tariffs for Municipal Lights adopted by MPSC)

Maintenance Process and Responsibility

- City-Owned Lighting
 - General maintenance and repairs – Public Works
 - Pole knock-downs – On-Call Contractor (Typically)
- Leased Lighting
 - All maintenance and repairs are covered in the tariff rates set by the Missouri Public Service Commission (MPSC)

Status of Existing Agreements

- 16 “Upgraded” Lighting Agreements (112 lights)
 - Decorative Only: 5 Agreements (47 lights)
 - Additional Standard Only: 6 Agreements (18 lights)
 - Lights For Sight Distance: 2 Agreements (14 lights)
 - Additional Decorative: 5 Agreements (47 lights)
 - Lights For Sight Distance: 3 Agreements (8 lights)
- Outstanding amount due (Yrs prior to FY22): \$53,000
 - (The City bills approximately \$72,000 annually)

Impacts of Policy/Resolution Changes

- Updates the “Base” Lighting to include street lights necessary for minimum sight distance criteria of roadway design
- Removes “Upgraded” Lighting Options for future requests. Does not impact existing agreements unless impacted by the “Base” Lighting changes.
- No change to materials, design standards, references, City owned lighting, process, etc.

Questions?