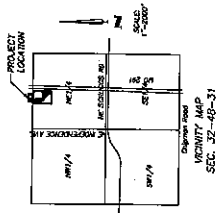




# FINAL PLAT QUIKTRIP NO. 0191, LOTS 1-3 & TRACTS A-C

LOTS 69 THRU 71, ORCHARD HILLS & THE NE 1/4,  
SECTION 32, TOWNSHIP 48, RANGE 31 & SE 1/4,  
SECTION 29, TOWNSHIP 48, RANGE 31, CITY OF LEE'S  
SUMMIT, JACKSON COUNTY, MISSOURI



• 5/8" 1/2" Rubber W/ SWR cap  
(Always alternate color)

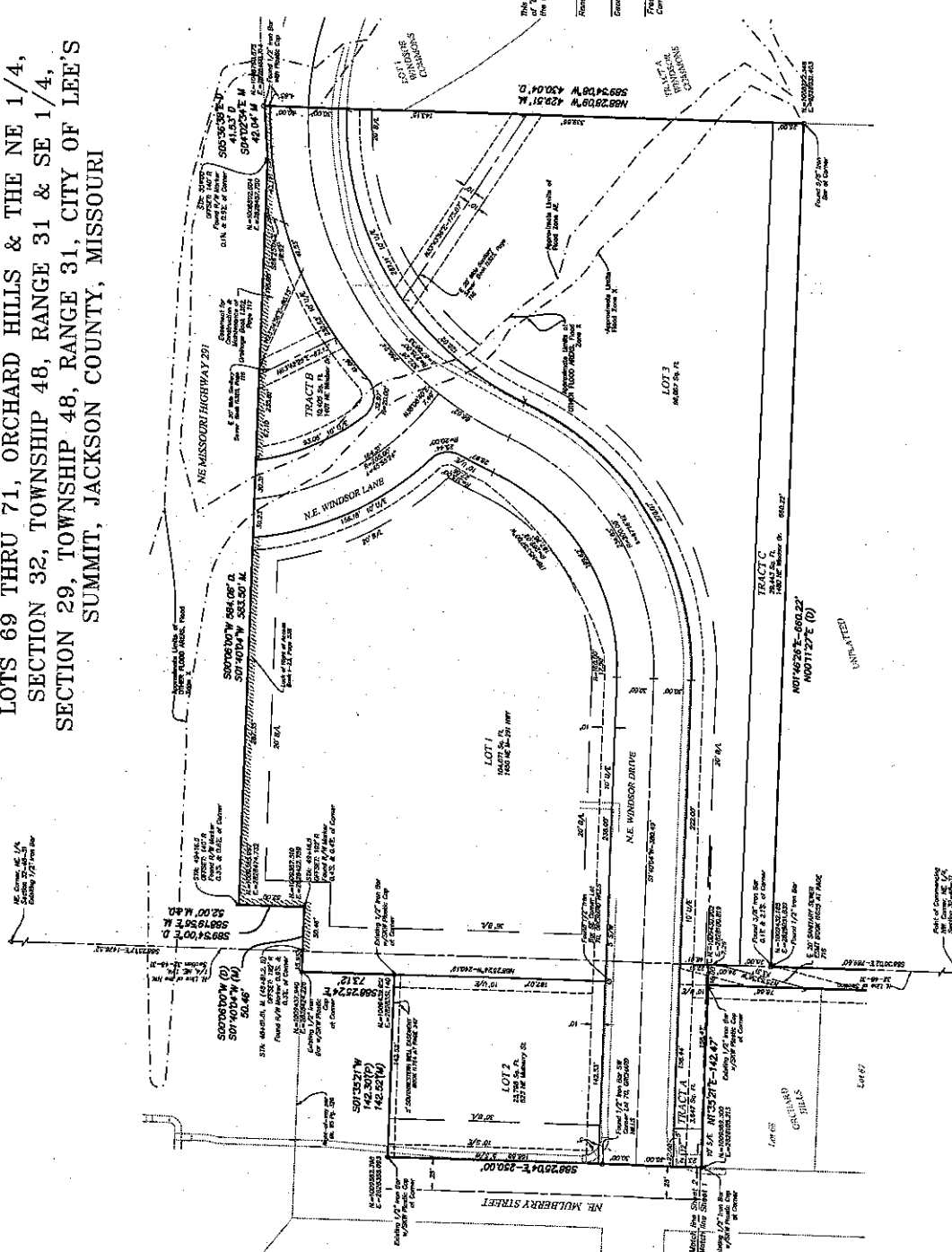
**GENERAL NOTES:**  
 Record shall be in accordance with the State Plane Coordinate System.  
 All bearings and distances shall be as shown on this plat.  
 Coordinates are based on the State Plane Missouri North Zone NAD83  
 datum. All bearings and distances shall be as shown on this plat.  
 Accuracy Standard is Type 1/2 inch.

This is to certify that the within plat of QUIKTRIP NO. 0191, LOTS 1-3 & TRACTS A-C was submitted to and duly approved by the Mayor and City Council of the City of Lee's Summit, Missouri, this \_\_\_\_\_ day of \_\_\_\_\_, 2017.

ATTEST: \_\_\_\_\_  
 Mayor, City of Lee's Summit, Missouri

\_\_\_\_\_  
 Clerk, City of Lee's Summit, Missouri

\_\_\_\_\_  
 Robert C. Kline, A.S.P.  
 Surveyor



RECEIVED

JAN 11 2017

Planning & Codes Admin

**SHAFER, KLINE & WARREN, INC.**  
 ENGINEERS & SURVEYORS  
 11555 COMMERCE CENTER DRIVE, SUITE 100  
 PHOENIX, (618) 886-1800 FAX (618) 886-0888

-2016-