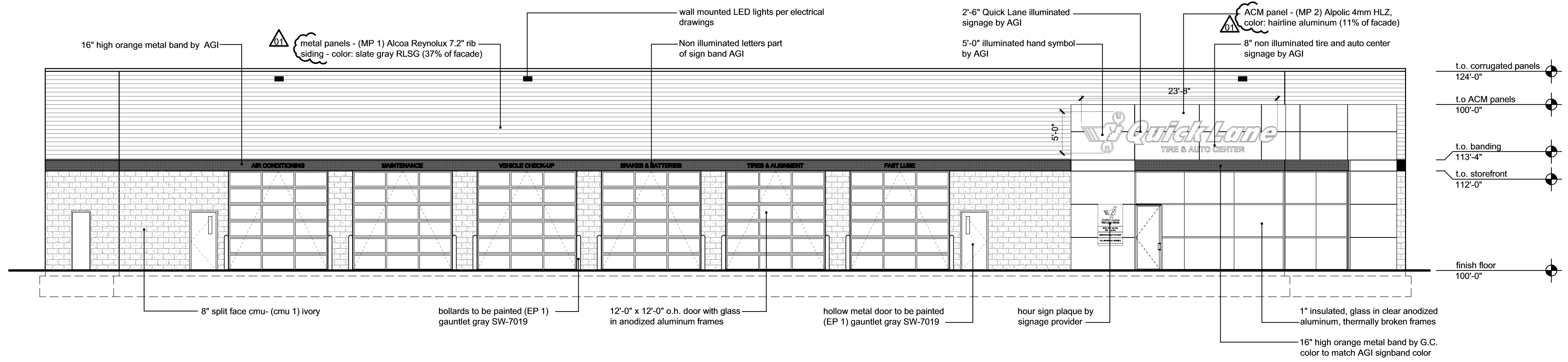


**exterior materials and finishes:**

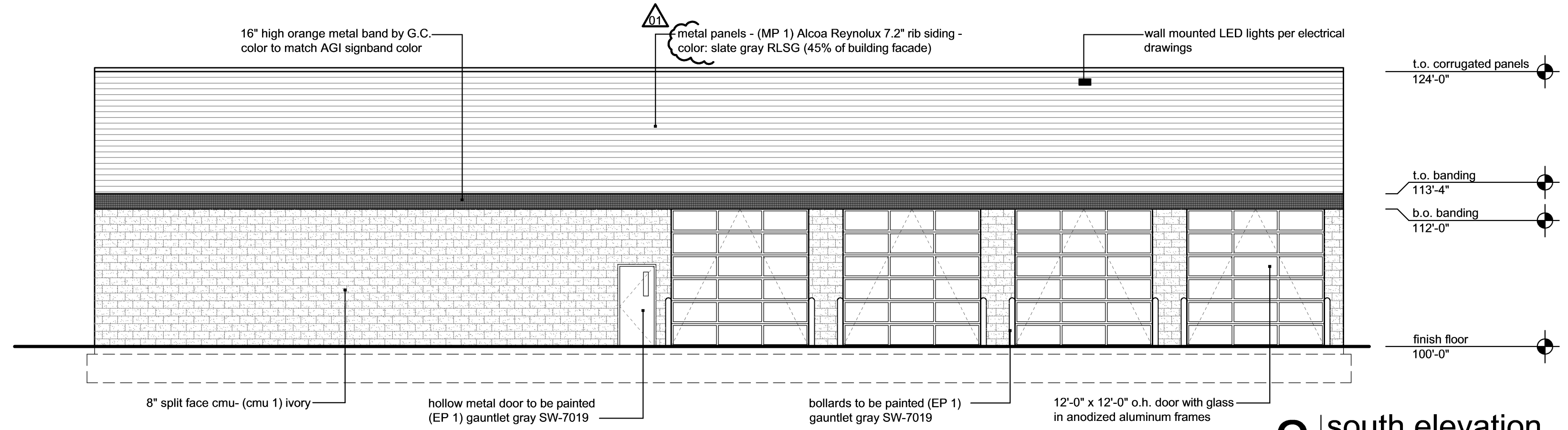
- CMU 1: Midwest Block and Brick Split Face Block, Ivory
- CMU 2: Midwest Block and Brick Split Face Block, Limestone
- Cast Stone: Midwest Cast Stone, Color 16AC
- Aluminum Frames: Thermally broken, clear anodized aluminum frame
- Glass: 1" insulated, Low E coating with Argon fill
- Flashing/Capflashing: CF 1: Pre-finished metal - Medium Gray (to match MP 1)
- Head Flashing: Pre-finished metal to match adjacent material
- Sill Flashing: Pre-finished metal to match adjacent material
- Exterior Paint: EP-1 - Sherwin Williams SW-7019 2144-70 gauntlet gray
- Roof Materials: White TPO
- Metal Panel: MP-1 - Alcoa Reynolux 7.2" rib siding - color: slate gray RLSG  
MP-2 - Alpolic 4mm HLZ, color: hairline aluminum
- Metal Band: ACM metal band to match AGI orange color

**signage:**

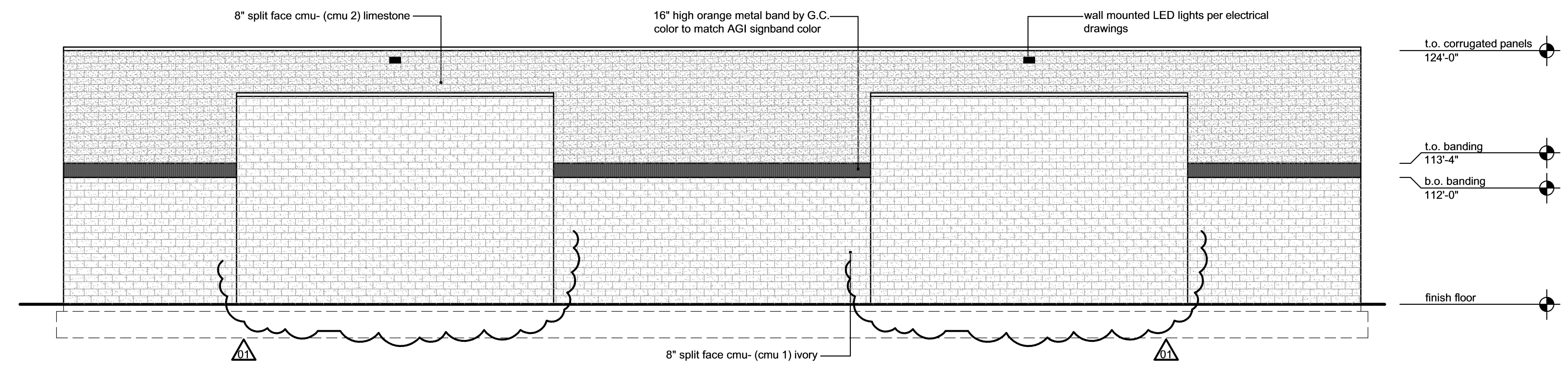
- northwest facade: 3,375 sq. ft. x 10% = 337.5 sq. ft. allowable
- \*Quick Lane Tire & Auto Center\* = 118.33 sq. ft.
  - \*AIR CONDITIONING\* = 3.15 sq. ft.
  - \*MAINTENANCE\* = 2.45 sq. ft.
  - \*VEHICLE CHECK-UP\* = 3.3 sq. ft.
  - \*BRAKES & BATTERIES\* = 3.6 sq. ft.
  - \*TIRES & ALIGNMENT\* = 3.4 sq. ft.
  - \*FAST LUBE\* = 1.8 sq. ft.
  - Total = 136.03 sq. ft.



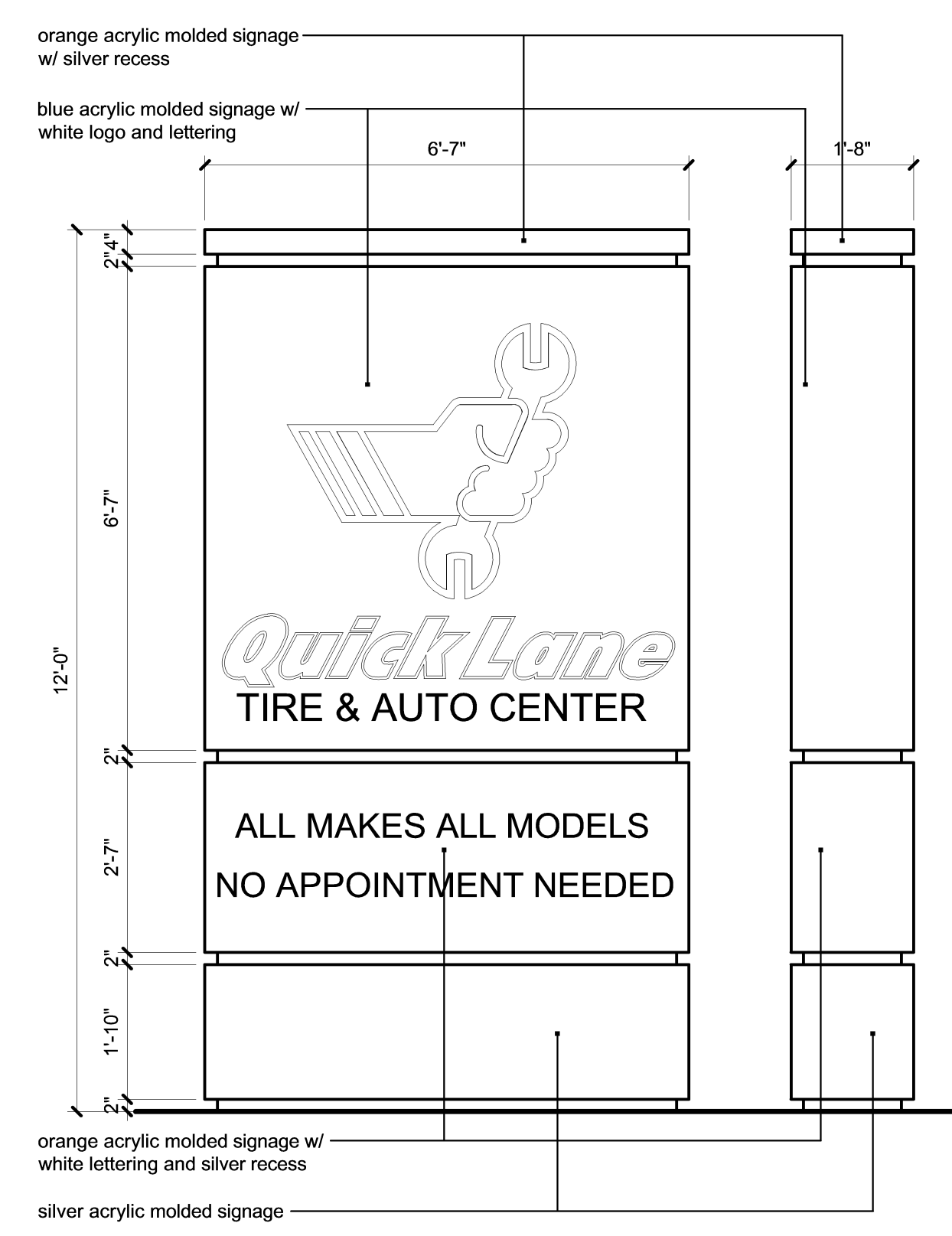
**2 northwest elevation**  
scale: 1/8"=1'-0"



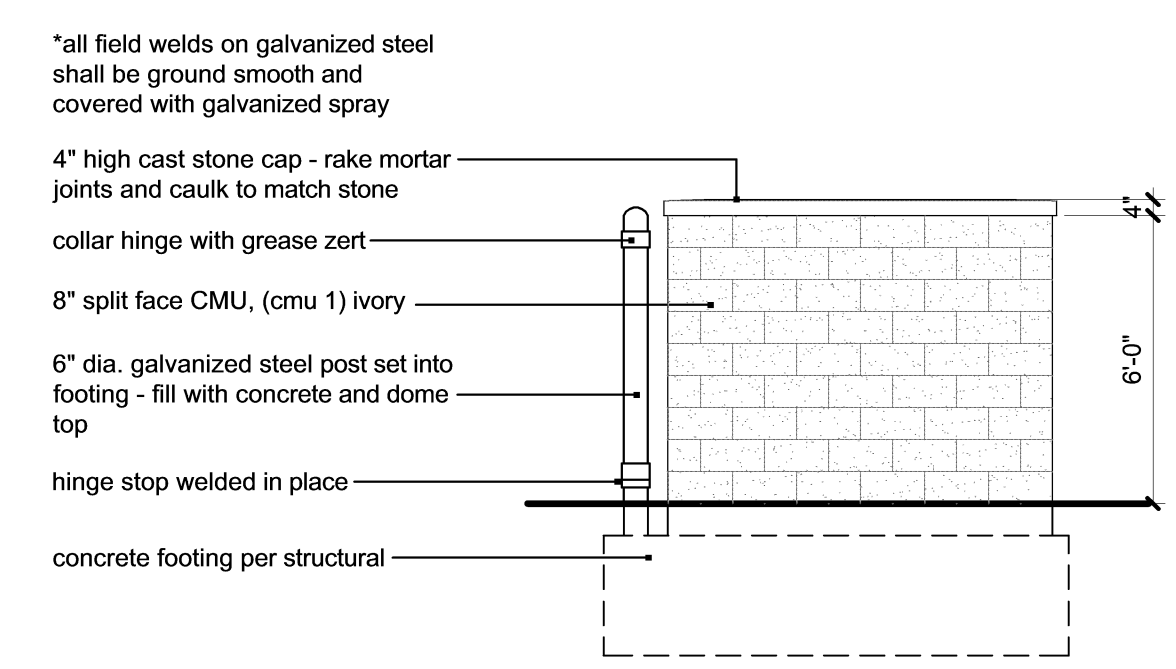
**2 south elevation**  
scale: 1/8"=1'-0"



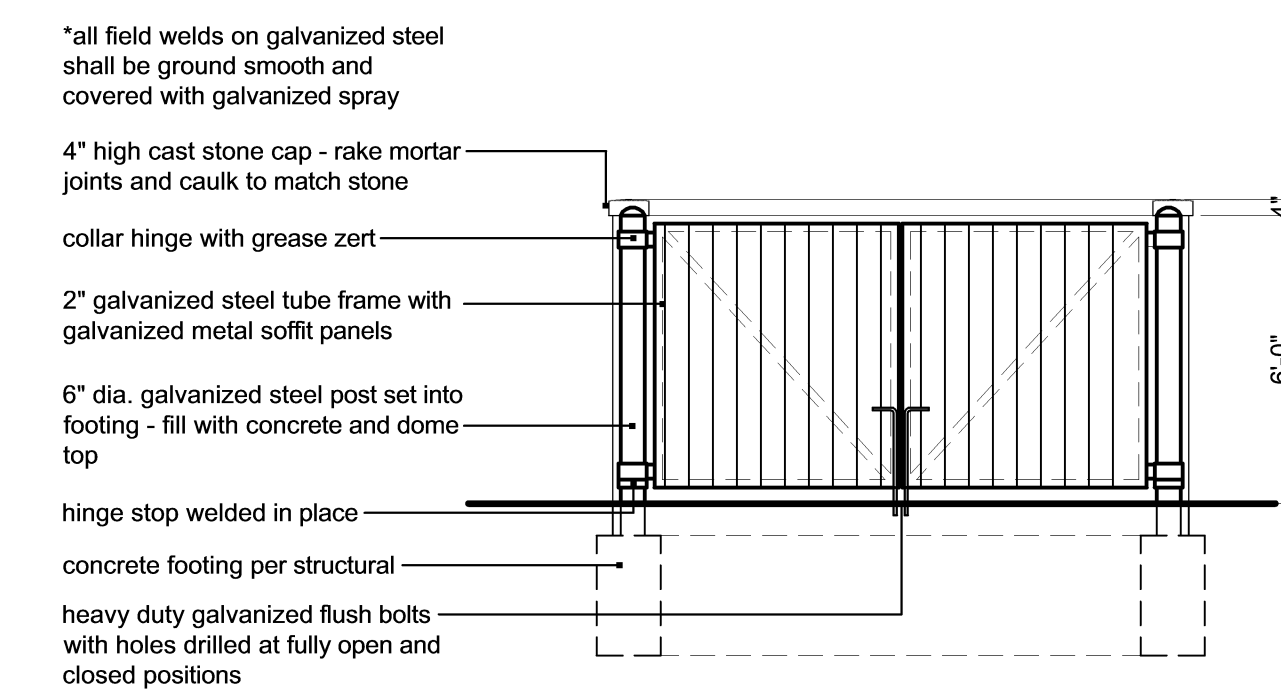
**3 east elevation**  
scale: 1/8"=1'-0"



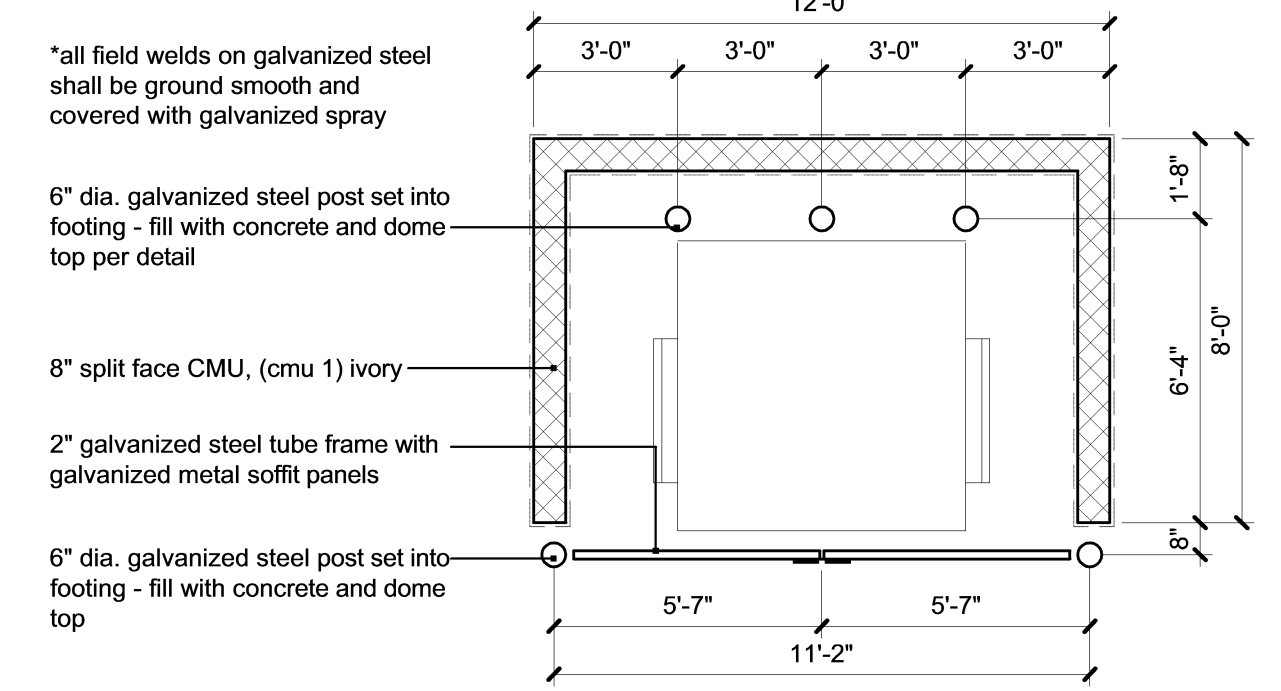
**7 Monument Sign Elevation**  
scale: 1/2"=1'-0"



**6 trash enclosure side elevation**  
scale: 1/4"=1'-0"



**5 trash enclosure front elevation**  
scale: 1/4"=1'-0"



**4 trash enclosure plan**  
scale: 1/4"=1'-0"

a proposed new facility for  
**Bob Sight Quick Lane**  
NW Blue Parkway  
Lee's Summit, MO

date 10.21.16  
drawn by DAE  
checked by DAE  
revisions  
11.21.16 01

sheet number  
**A3.1**  
drawing type PDP  
project number 16192