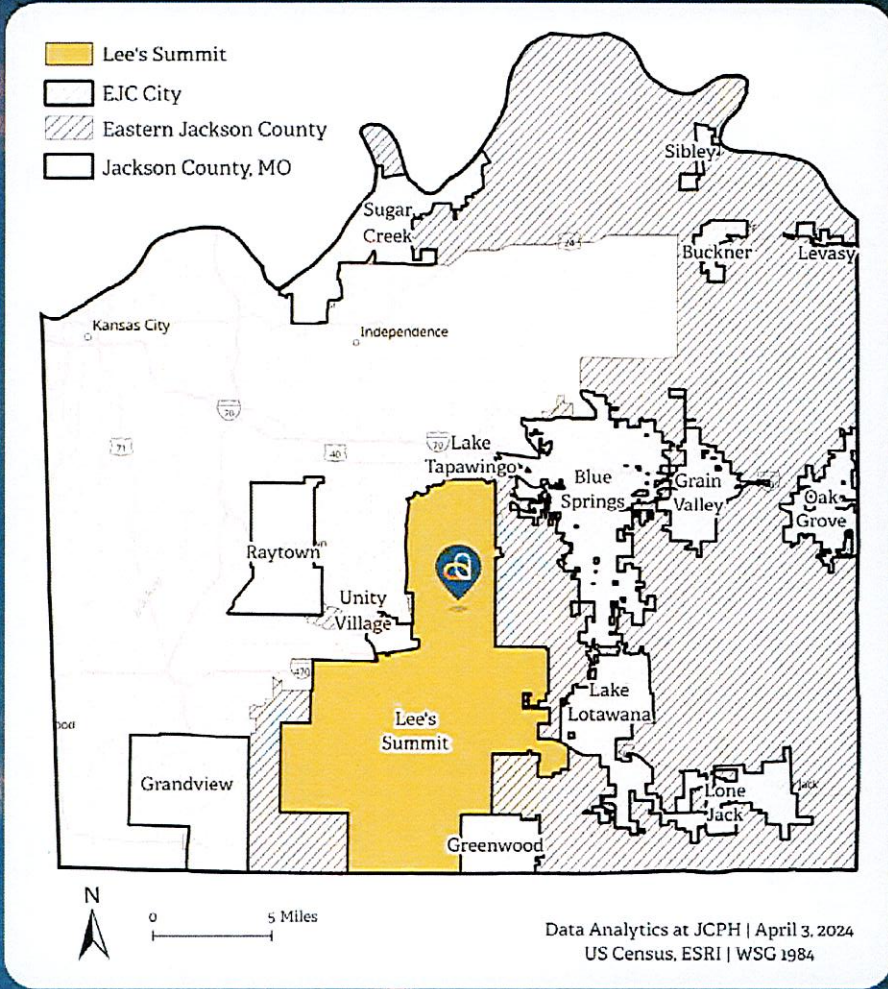


What Determines Health in EJC and Lee's Summit?

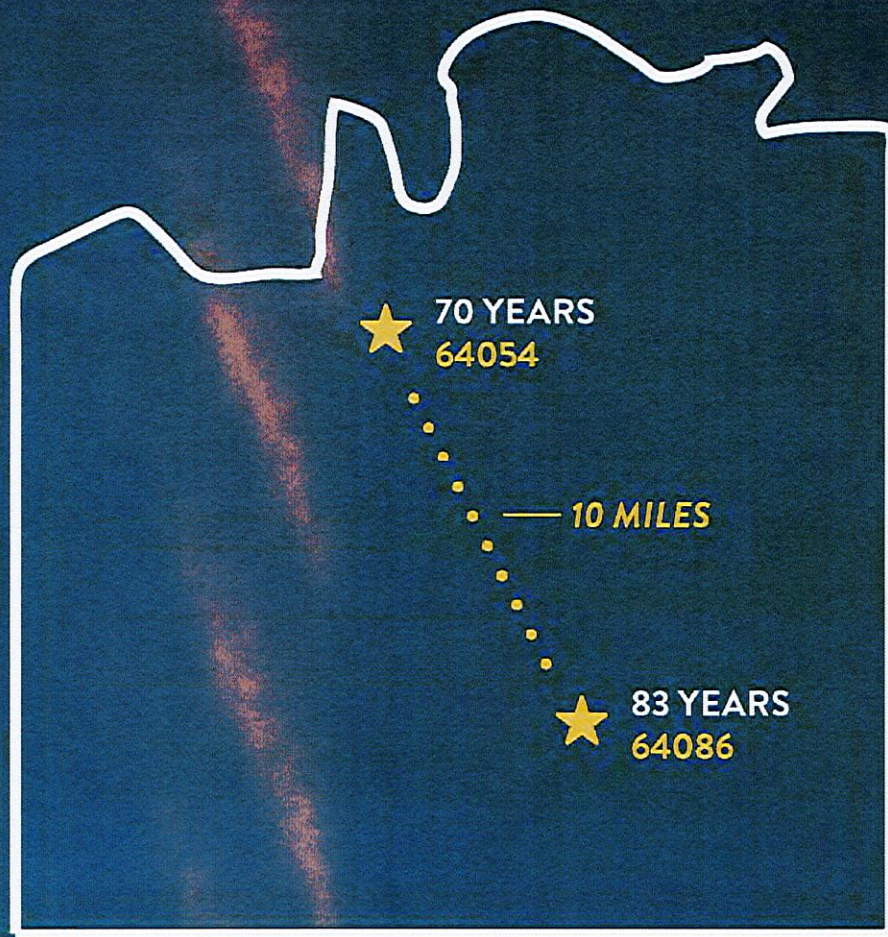
A COMMUNITY HEALTH ASSESSMENT



JACKSON COUNTY PUBLIC HEALTH

OUR WORK INCLUDES...

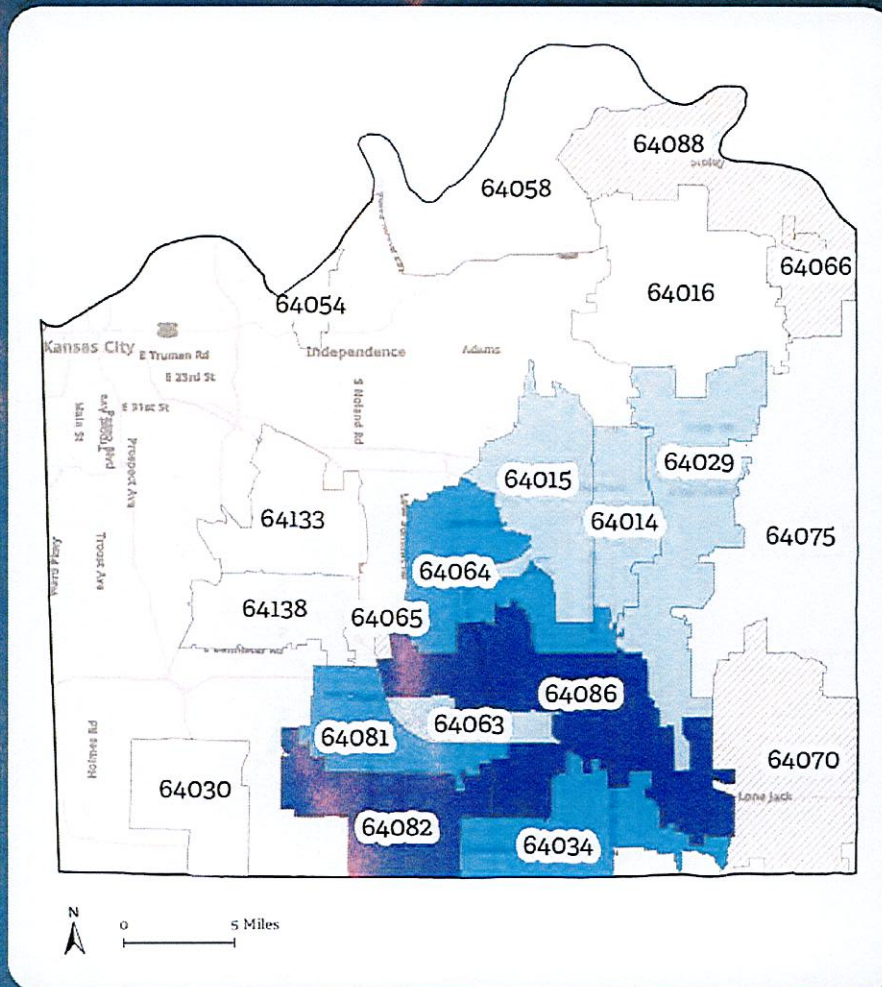
- Free & low-cost health services
- Free community resources, such as Narcan & car seats
- Investigating disease outbreaks
- Analyzing local policies & health data



LIFE EXPECTANCY, 2011-2020

Different
opportunities
lead to
differences
in health,
quality of life,
and lifespan.

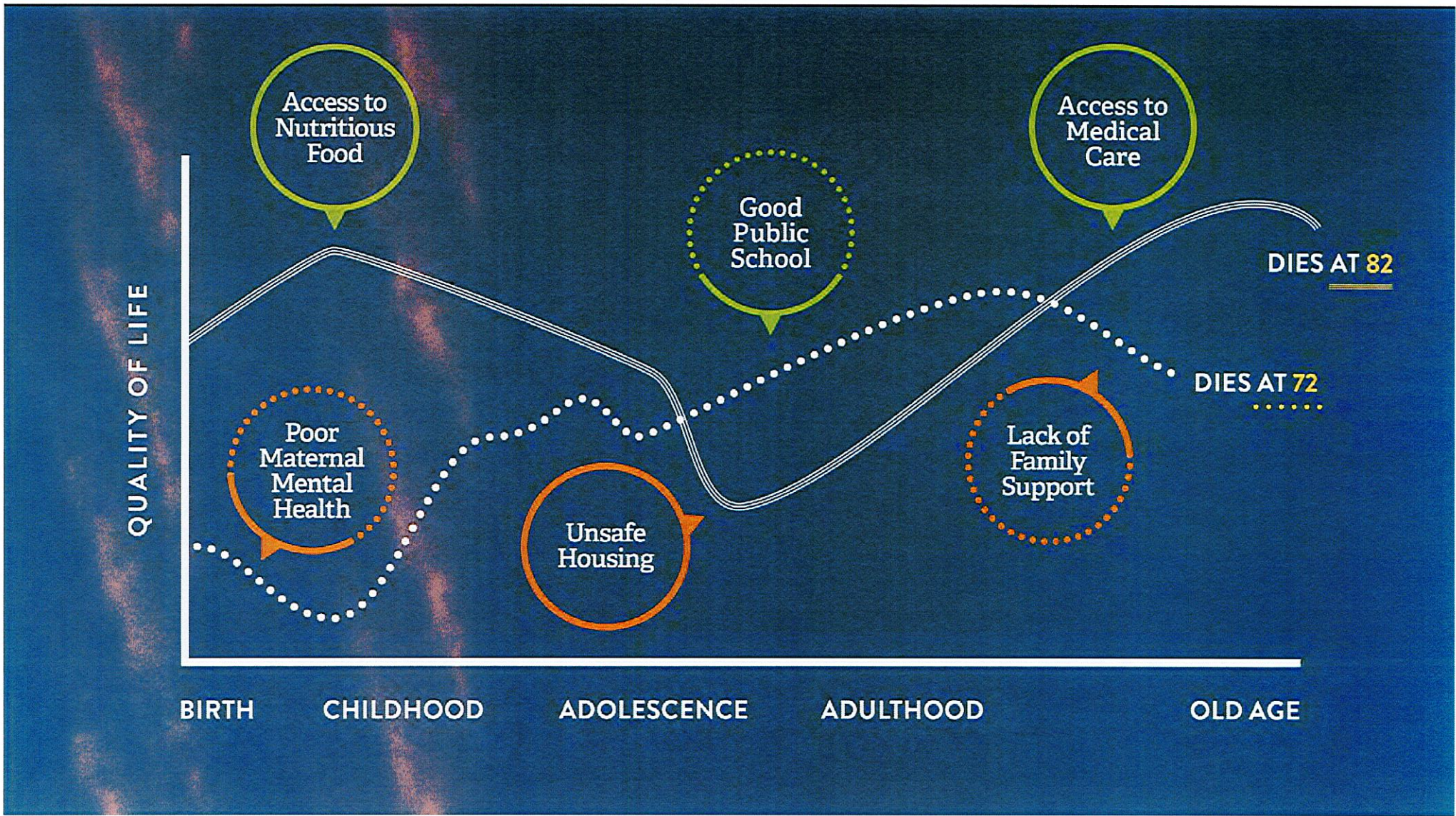
LIFE EXPECTANCY BY ZIP CODE, 2011-2020



- 69.8-75.7 YRS
- 75.7-77.3 YRS
- 77.3-80.3 YRS
- 80.3-82.1 YRS
- 82.1-83.2 YRS
- Data Unavailable
- Jackson County, MO

ZIP CODE BOUNDARIES ARE NOT ENTIRELY CONFINED WITHIN CITY LIMITS.

In **Lee's Summit**,
the average
life expectancy
ranges from
80 to 83 years.





Community
Surveys



In-Person
Discussions



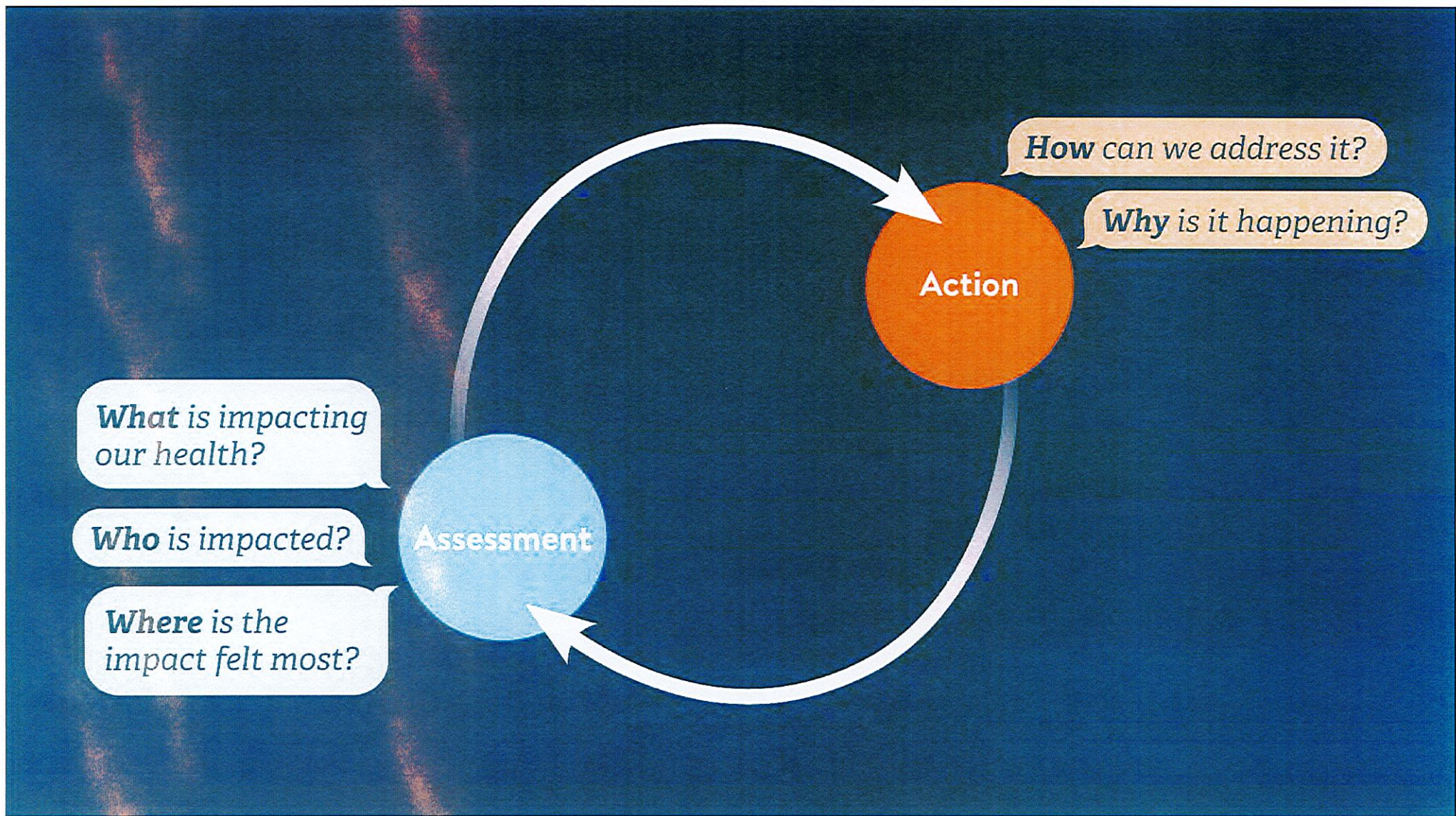
Policy & Data
Assessment



DECEMBER 2023

Eastern Jackson County Community Health Assessment

*Presented by
Jackson County Public Health*



14 topics

SOCIAL AND STRUCTURAL DETERMINANTS OF HEALTH •
DEMOGRAPHICS • EDUCATION • DISABILITY • ECONOMIC
STABILITY • ENVIRONMENTAL RISKS • QUALITY OF LIFE
• COVID-19 • COMMUNITY CONNECTION • HEALTH
RESOURCES • HEALTH BEHAVIORS, OUTCOMES, AND
TRENDS • COMMUNICABLE DISEASE • MENTAL AND
BEHAVIORAL HEALTH • LIFE EXPECTANCY • MATERNAL,
CHILD, AND INFANT HEALTH • COMMUNITY POLICIES
AND ASSETS • POLICY SCAN • COMMUNITY RESOURCES

216 pages

**We asked our community
where interventions were most needed.**

JUNE 2023 COMMUNITY HEALTH SUMMIT

40+ community members and partners

Discussion and ranking of priorities



COMMUNITY-IDENTIFIED PRIORITY AREAS:

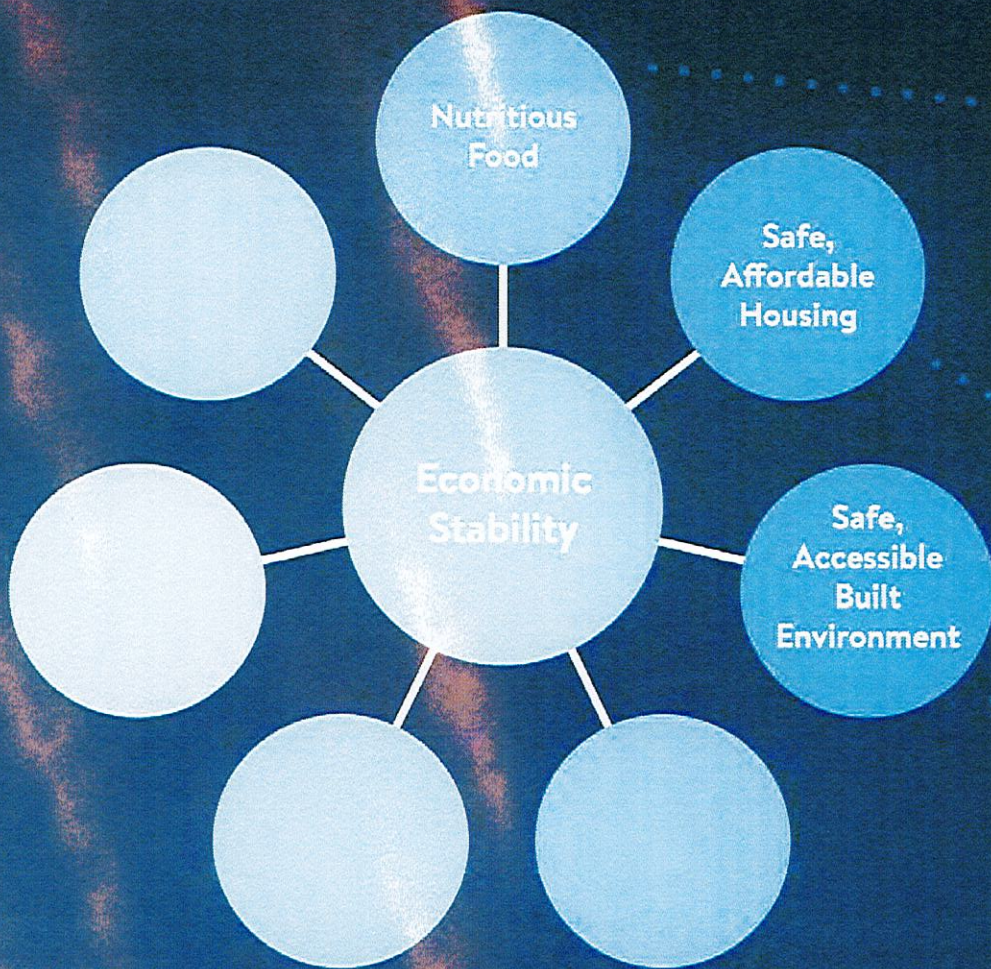


**Mental
Health and
Wellbeing**



**Economic
Stability**





ALL EJC RESPONDENTS:



1 in 5 had to choose between buying food and paying other bills



1 in 10 were concerned about losing their housing in the future



1 in 10 did not feel safe walking in their neighborhood

LEE'S SUMMIT RESPONDENTS

13% WORRIED THEIR HOUSEHOLD WOULD RUN OUT OF FOOD



14% HAD TO CHOOSE BETWEEN BUYING GROCERIES AND PAYING OTHER BILLS



28% AVOIDED SEEKING MEDICAL CARE DUE TO MEDICAL BILLS



22% AVOIDED FILLING A PRESCRIPTION DUE TO THE COST



5% of LS adults

6% of LS children

live in poverty

RACE & POVERTY

27% Native Hawaiian & Pacific Islander

9% Black or African-American

7% Hispanic or Latino

\$78k
median household income in EJC

\$33k

Annual basic expenses for one person in Jackson County

\$95k

Annual basic expenses for a Jackson County 4-person family

\$93k
MEDIAN HOUSEHOLD INCOME IN LEE'S SUMMIT

5% of LS adults

6% of LS children

live in poverty

RACE & POVERTY

27% Native Hawaiian & Pacific Islander

9% Black or African-American

7% Hispanic or Latino

\$78k
median household income in EJC

Poverty threshold for an individual

\$12k

Poverty threshold for a family of 4

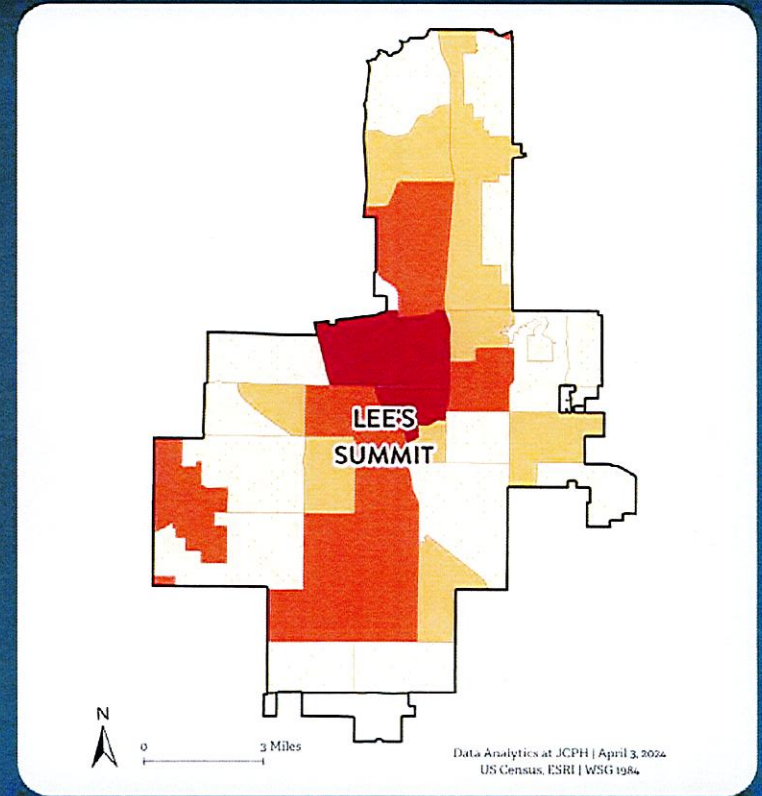
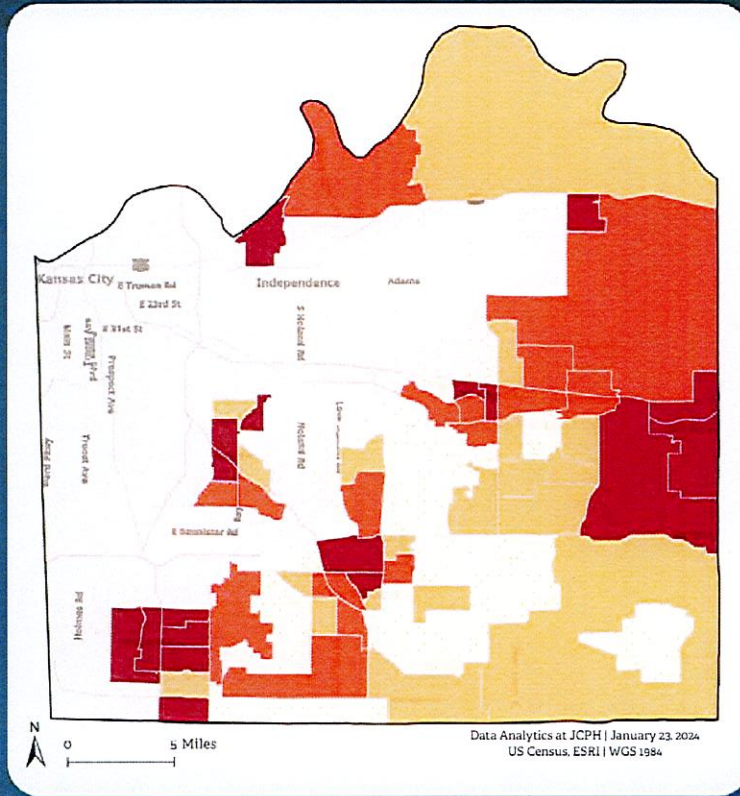
\$26k

\$93k

MEDIAN HOUSEHOLD INCOME IN LEE'S SUMMIT

POVERTY RATES, 2020

Different
geography,
similar
challenges.



LOWER RATES



HIGHER RATES

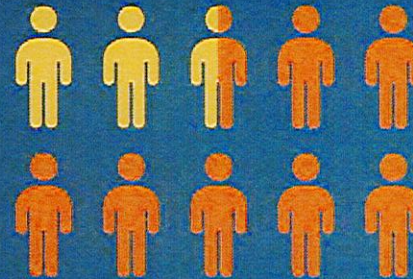
46% of renters



16% of homeowners



**IN LEE'S SUMMIT ARE
COST BURDENED**



24% of LS residents rent
76% are homeowners



HOMEOWNERSHIP

80% WHITE	79% ASIAN
75% HISPANIC & LATINO	19% BLACK NH&PI

Affordable \neq Safe

43%

indicated that affordable housing is a **significant or moderate issue** in their communities

9%

expressed concern about **losing their housing** in the future



28% of houses in LS were built before 1979, which can lead to **potential lead exposure**

MOST COMMONLY REPORTED HOUSE HAZARDS IN LEE'S SUMMIT



1

**Mold or mildew
growth**



2

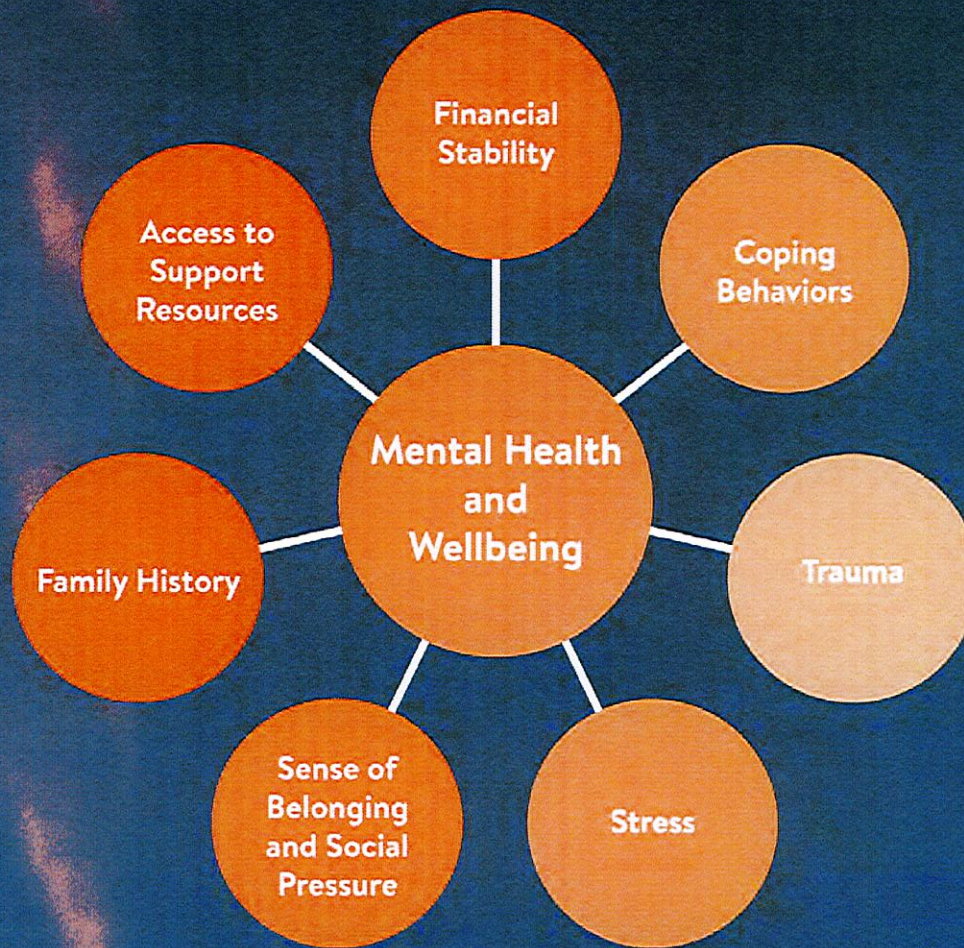
**Peeling or
chipping paint**

**increased hazard in older homes
due to risk of lead paint*



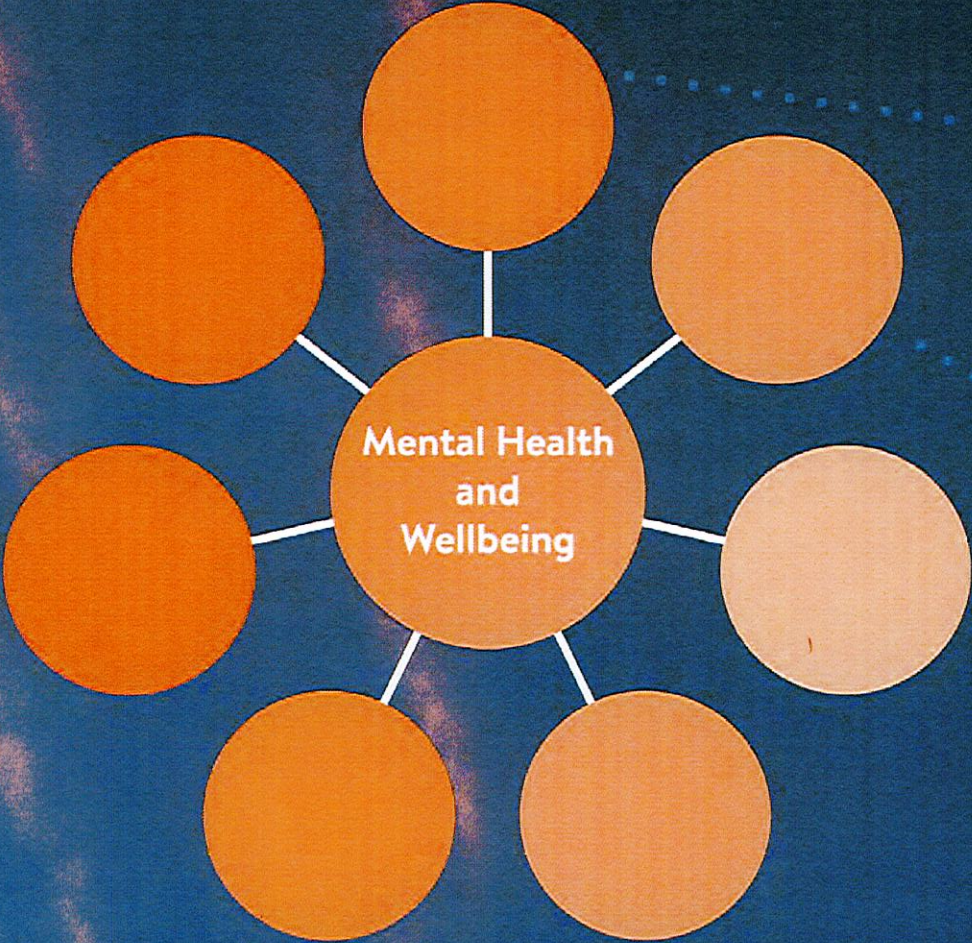
3

**No or non-
functioning Carbon
Monoxide detection**



**Note: this section includes discussions of suicide and drug use.*

ALL EJC RESPONDENTS:



3 in 5 respondents experienced at least one poor mental health day in the past month



2 in 5 respondents felt satisfied with their community support during stressful times



From 2018 to 2021, **opioid deaths doubled** in EJC.

LEE'S SUMMIT RESPONDENTS:

64%

HAD AT LEAST ONE
POOR MENTAL HEALTH
DAY IN THE LAST MONTH



16%

HAD A WEEK OR MORE OF
POOR MENTAL HEALTH IN
THE LAST MONTH



7%

HAD 11 OR MORE POOR
MENTAL HEALTH DAYS IN
THE LAST MONTH



In 2020, **opioid overdose deaths** were the **leading cause of death** in the state of Missouri among adults ages 18-44.

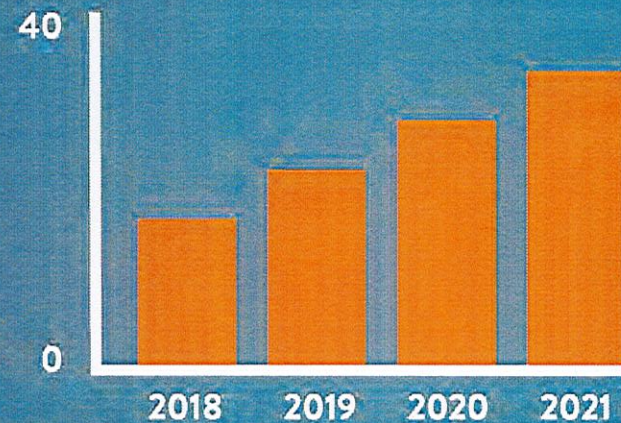
298

non-fatal overdoses in EJC between 2016–2020 that led to ER visits.

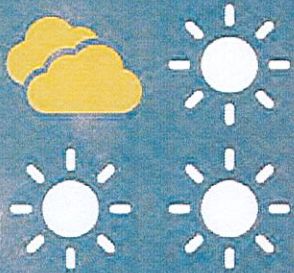
This doesn't include those who didn't go to the hospital.

In EJC, from 2018 to 2021

OPIOID DEATHS DOUBLED



22% of individuals in LS have experienced depression



1 in 3 respondents indicated mental health is a concern in their community



A community-recognized need for mental health resources

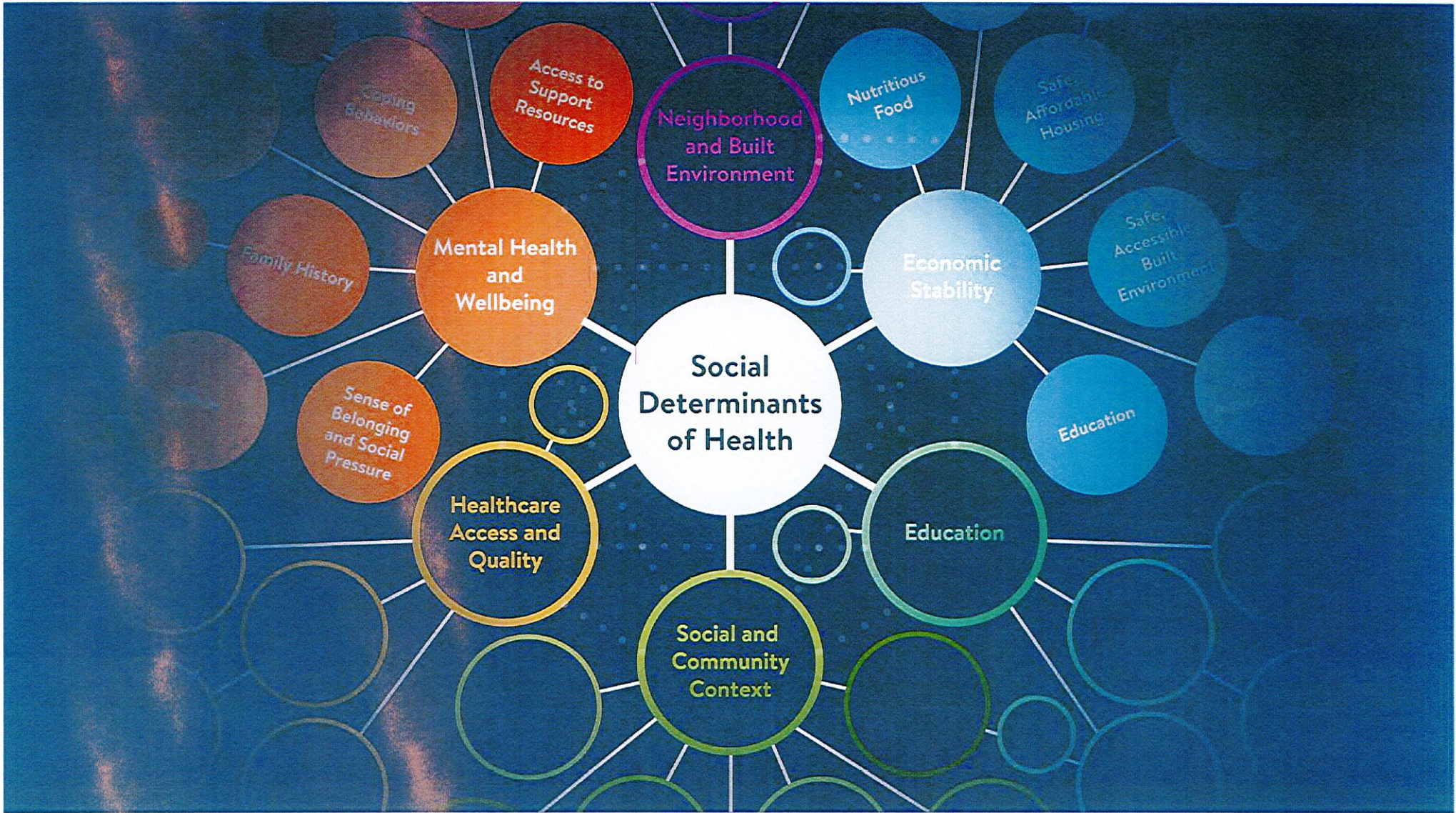
OVER 4,000

suicide-related Emergency Room visits in EJC from 2018-2022



suicide-related ER visits in EJC increased from

637 → 1,106
in 2018 in 2022





Community Voices

LEE'S SUMMIT RESIDENTS' SUPPORT FOR HEALTH IMPROVEMENT POLICIES



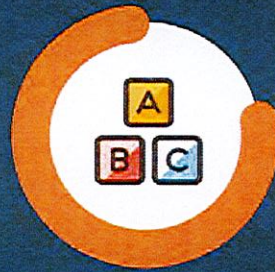
85%

TRANSPORTATION
INFRASTRUCTURE



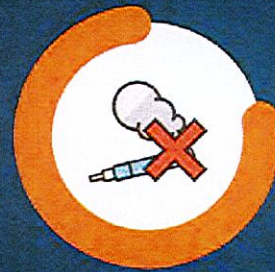
81%

HEALTHY RENTAL
HOUSING



78%

ACCESSIBLE
PRE-K



78%

SMOKE-FREE
INDOOR AIR



77%

ECO-FRIENDLY
PURCHASING

LEE'S SUMMIT RESPONDENTS



COMMUNITY STRENGTHS

Good place to raise kids

Healthy environment
(Clean air & water)

Walkability

Access to nutritious food

High-quality public schools

VS

COMMUNITY CONCERNS

Distracted driving

Access to public transportation

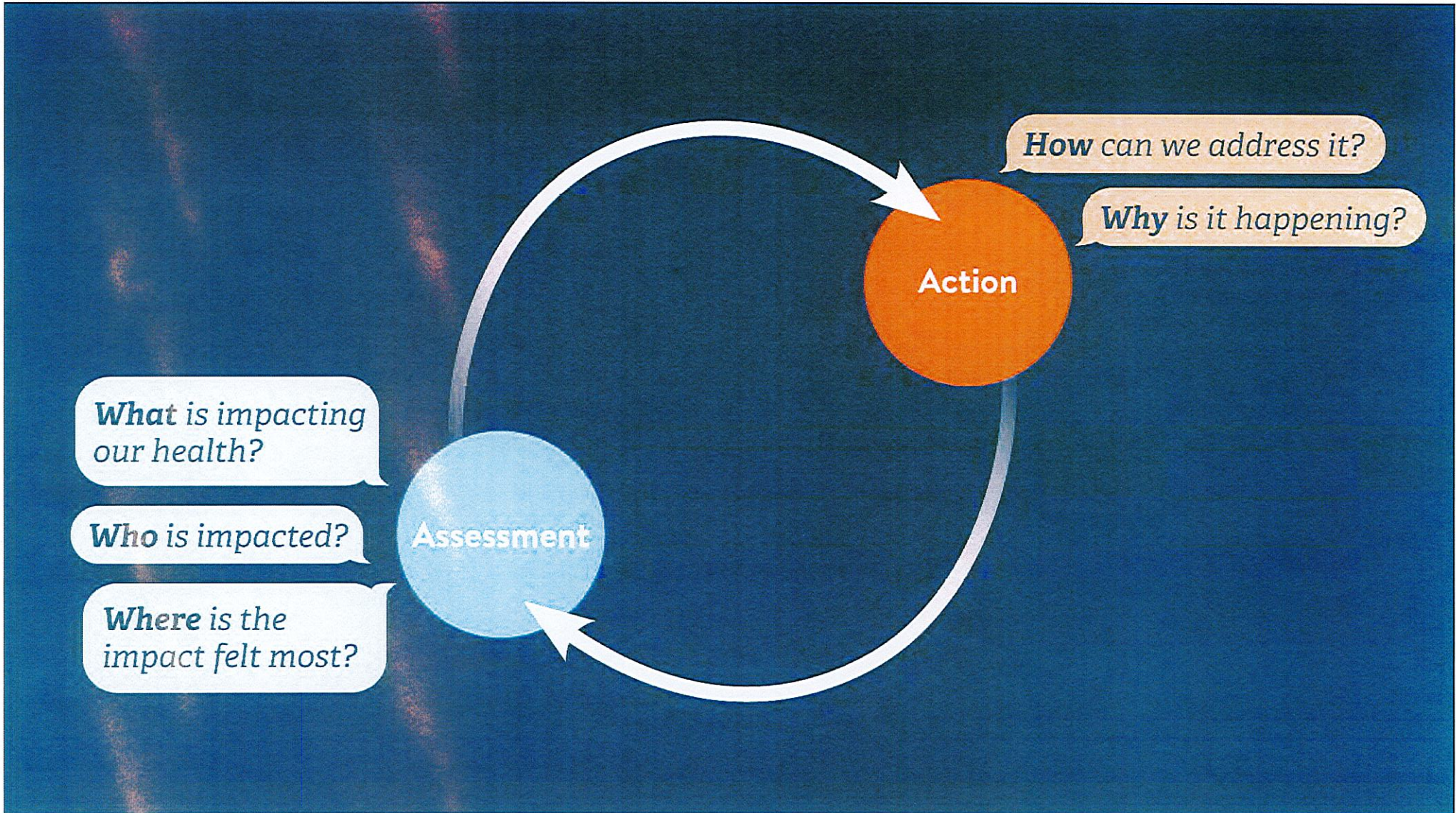
Affordable housing options

Access to affordable
healthcare

Firearms & gun violence



So what's next?



InCoLab: A Community Coalition Group

EXPLORING COLLABORATIVE SOLUTIONS



TRADITIONAL WAY

Acting alone

Organizational priorities

Limited in scope

Community feedback

Transactional change

VS

NEW APPROACH

Working across organizations

Community priorities

County-wide impact

Community collaboration

Transformational change

TAKING ACTION

Working *in* and *with* the community to *identify* and *understand* the current systems influencing health outcomes and quality of life in EJC.



Mental &
Behavioral
Health Lab

Housing &
Economic
Stability Lab



OUR PARTNERS INCLUDE...



CORNERSTONES
OF CARE



CHILDREN'S
SERVICES
FUND
OF JACKSON COUNTY



**COMMUNITY
SERVICES
LEAGUE**



METROPOLITAN
COMMUNITY COLLEGE



HEARTLAND CENTER FOR JOBS & FREEDOM

Culture Journey LLC



WANT TO LEARN MORE?

WANT MORE CHA?

The full CHA can be read at jcph.org/CHA

CITY SPECIFIC QUESTIONS?

Check out our in-depth city reports
at jcph.org/city-reports

OTHER QUESTIONS & RESOURCES?

Contact our team at askJCPH@uhkc.org

QUESTIONS?