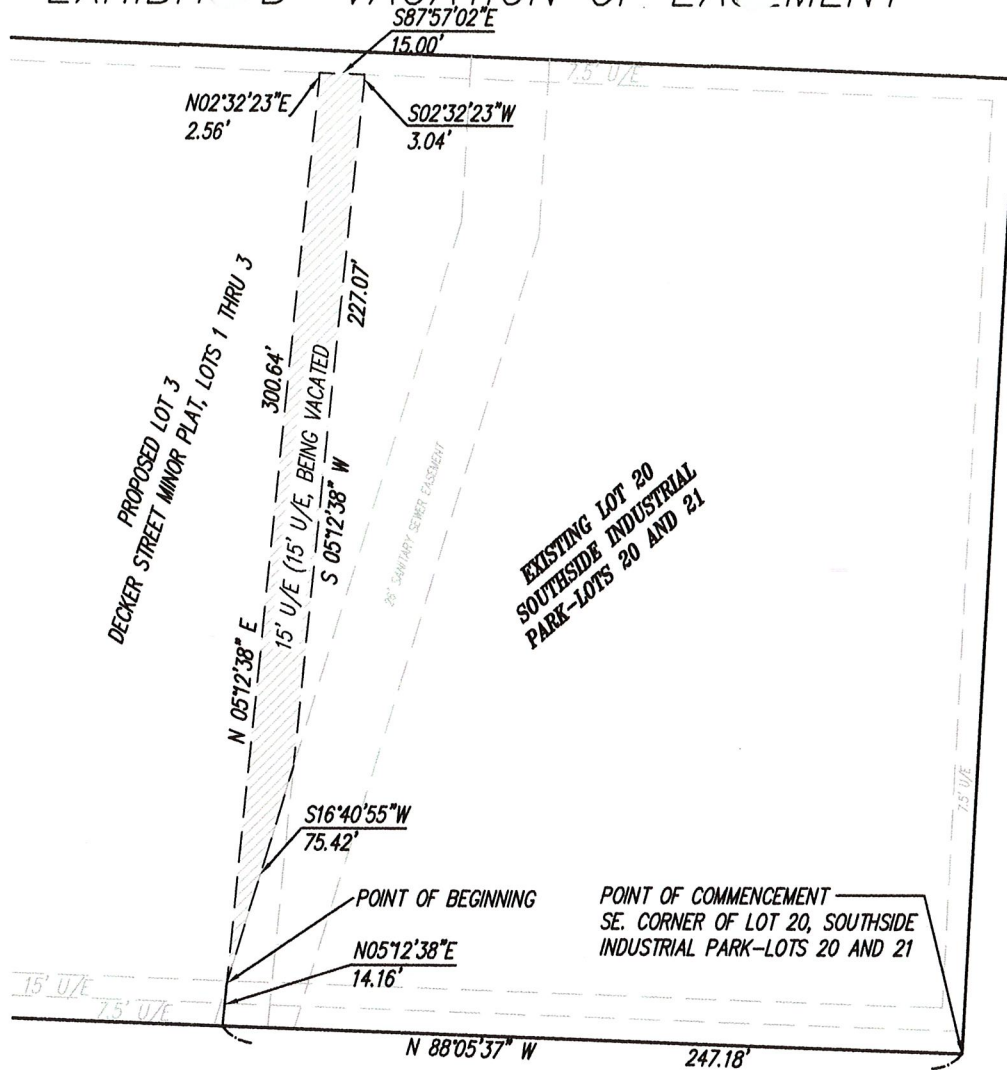




# EXHIBIT "B" VACATION OF EASEMENT



SEPT. 5, 2019

2019-202

**LEGAL DESCRIPTION:**

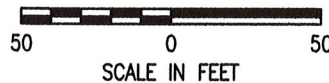
All that part of Lot 20, Southside Industrial Park – Lots 20 and 21, a subdivision in the City of Lee's Summit, Jackson County, Missouri, more particularly described as;  
 Commencing at the Southeast corner of said Lot 20; thence North 88 degrees 05 minutes 37 seconds West, along the South line of said Lot 20, a distance of 247.18 feet; thence North 05 degrees 12 minutes 38 seconds East, a distance of 14.16 feet, to the Point of Beginning; thence North 05 degrees 12 minutes 38 seconds East, a distance of 300.64 feet; thence North 02 degrees 32 minutes 23 seconds East, a distance of 2.56 feet; thence South 87 degrees 57 minutes 02 seconds East, a distance of 15.00 feet; thence South 02 degrees 32 minutes 23 seconds West, a distance of 3.04 feet; thence South 05 degrees 12 minutes 38 seconds West, a distance of 227.07 feet; thence South 16 degrees 40 minutes 55 seconds West, a distance of 75.42 feet, to the Point of Beginning. Containing 3,999.84 square feet.

LOT 11  
 LEMONE-SMITH BUSINESS  
 AND RAIL CENTER, PLAT 8

RECEIVED

SEP 05 2019

Development Services



**LADWIG & ASSOCIATES, LLC.**

LAND SURVEYORS  
 33604 E. 235th Street  
 Pleasant Hill, Missouri 64080  
 816-309-6621