

New Longview TIF Plan 2nd Amendment

Staff Presentation to City Council

April 2, 2019



LEE'S SUMMIT
MISSOURI



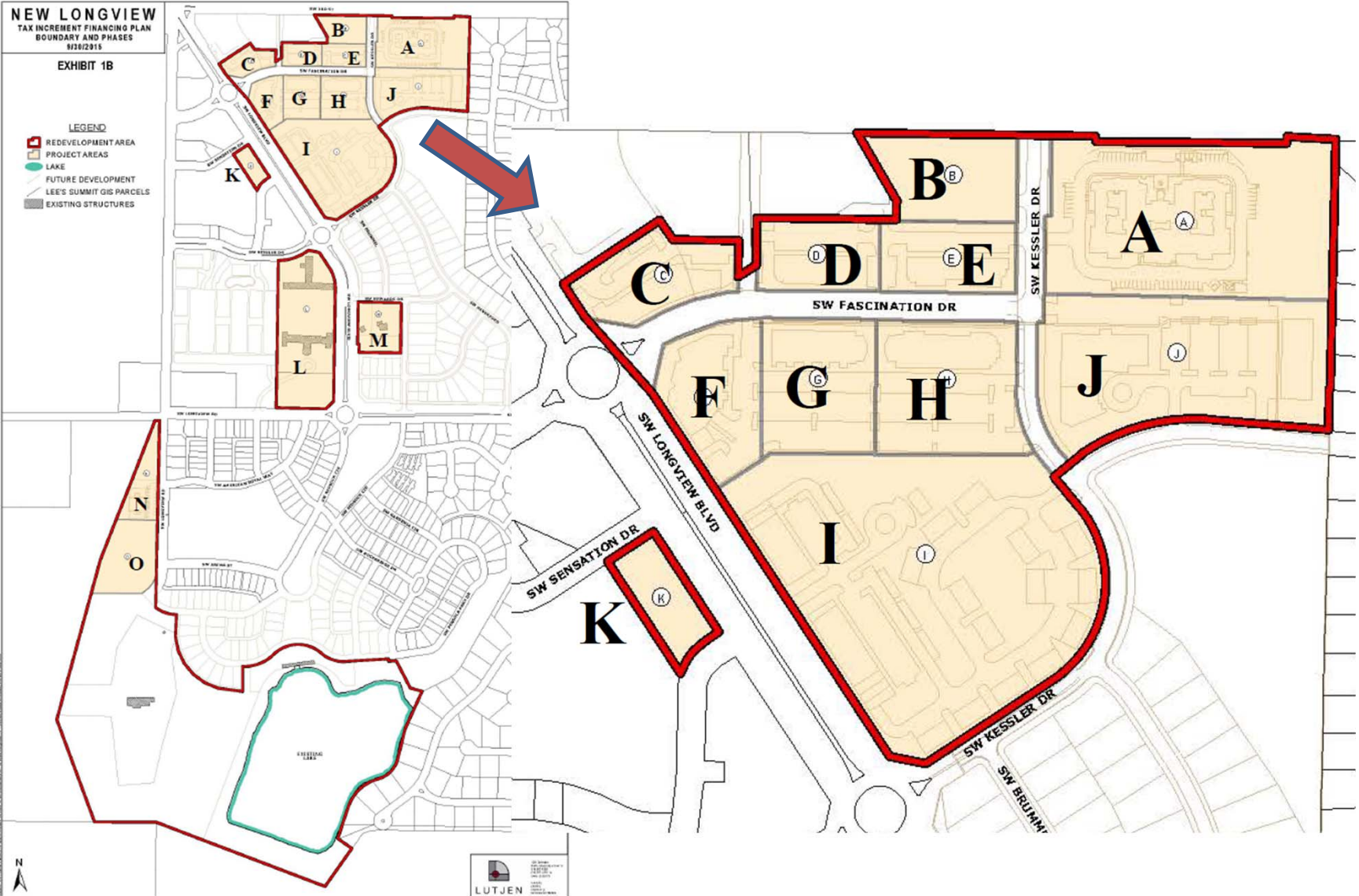
Yours Truly

NEW LONGVIEW
TAX INCREMENT FINANCING PLAN
BOUNDARY AND PHASES
11/21/2015

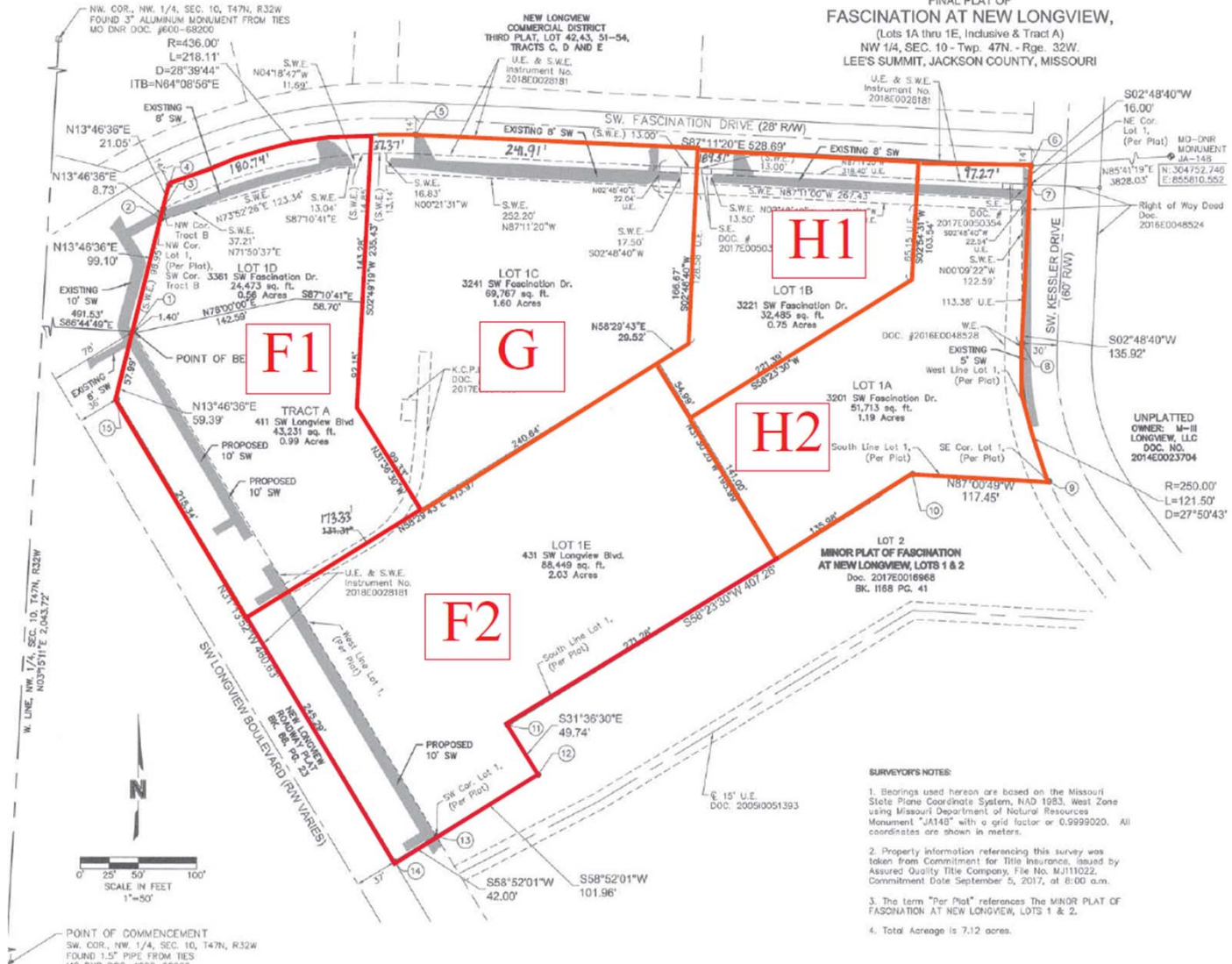
EXHIBIT 1B

LEGEND

-  REDEVELOPMENT AREA
-  PROJECT AREAS
-  LAKE
-  FUTURE DEVELOPMENT
-  LEE'S SUMMIT GIS PARCELS
-  EXISTING STRUCTURES



FINAL PLAT OF
FASCINATION AT NEW LONGVIEW,
 (Lots 1A thru 1E, Inclusive & Tract A)
 NW 1/4, SEC. 10 - Twp. 47N. - Rge. 32W.
 LEE'S SUMMIT, JACKSON COUNTY, MISSOURI



- SURVEYOR'S NOTES:**
1. Bearings used hereon are based on the Missouri State Plane Coordinate System, NAD 1983, West Zone using Missouri Department of Natural Resources Monument "J4143" with a grid factor of 0.9999020. All coordinates are shown in meters.
 2. Property information referencing this survey was taken from Commitment for Title Insurance, issued by Assured Quality Title Company, File No. MJ111022, Commitment Date September 5, 2017, at 8:00 a.m.
 3. The term "Per Plat" references the MINOR PLAT OF FASCINATION AT NEW LONGVIEW, LOTS 1 & 2.
 4. Total Acreage is 7.12 acres.



