

Bergmeyer SHAKE SHACK

Lee's Summit

PDP Exterior Design Submission Update
November 16th 2020

BOS

-
51 Sleeper St.
6th Floor
Boston, MA 02210
617.542.1025

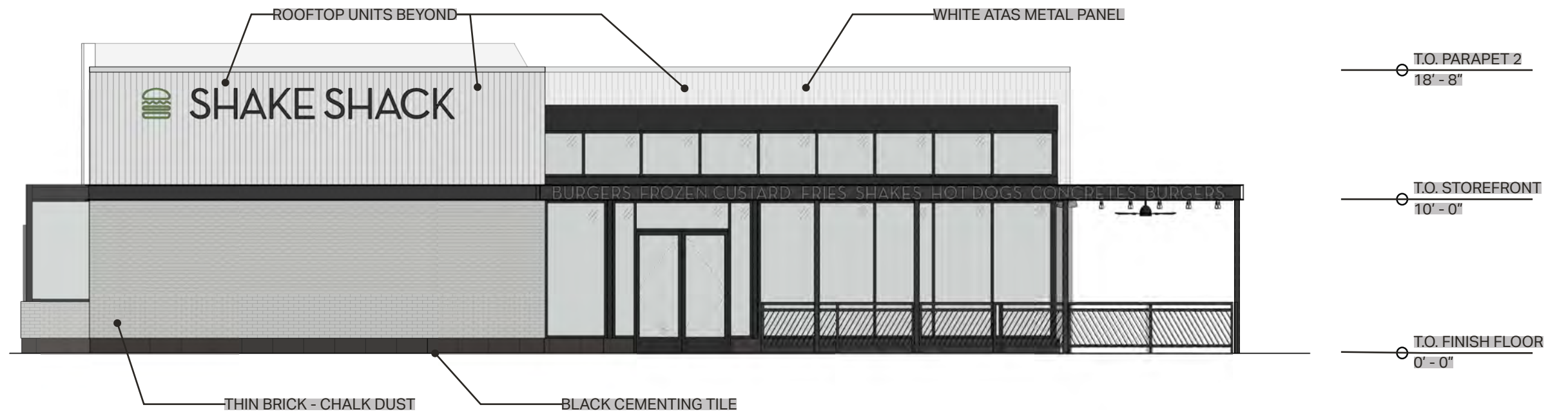
LA

-
800 South Figueroa St.
Suite 1080
Los Angeles, CA 90017
213.337.1090

Front Elevation & Perspective



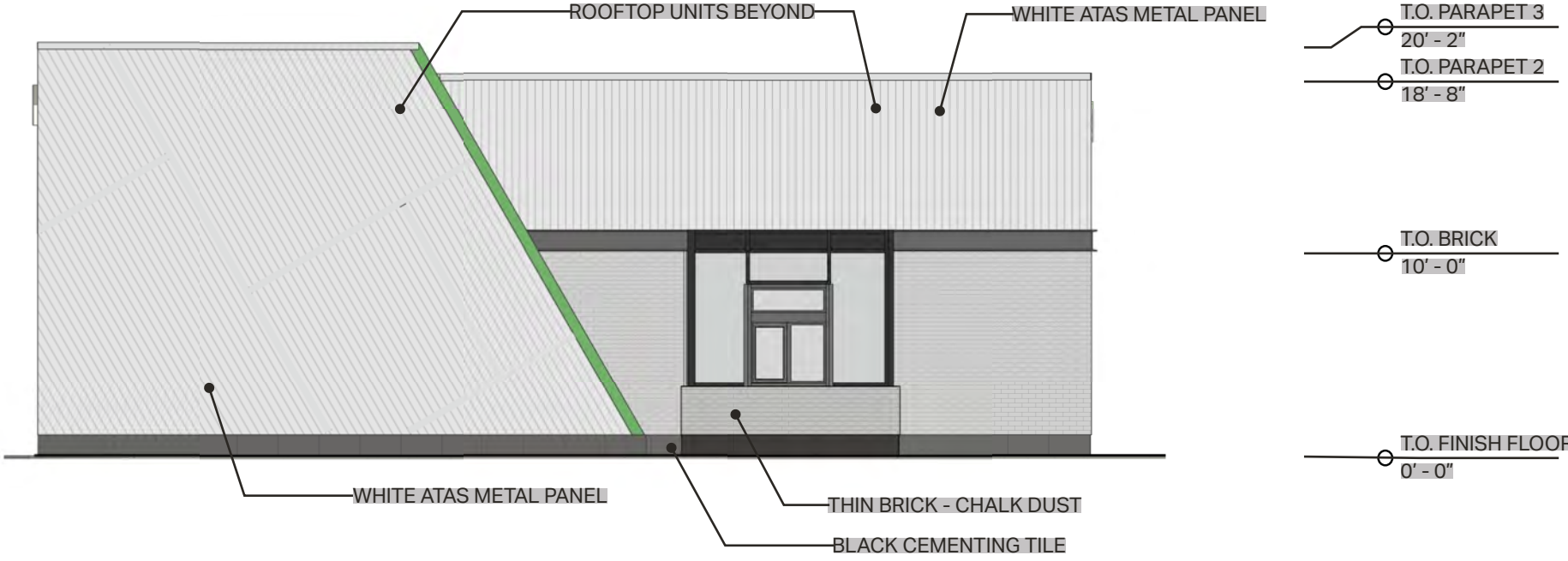
METAL PANEL AREA:	319 SF
TOTAL FACADE AREA:	1244 SF
METAL PANEL PERCENT COVERAGE:	25.6%



Drive-Thru Side Elevation & Perspective



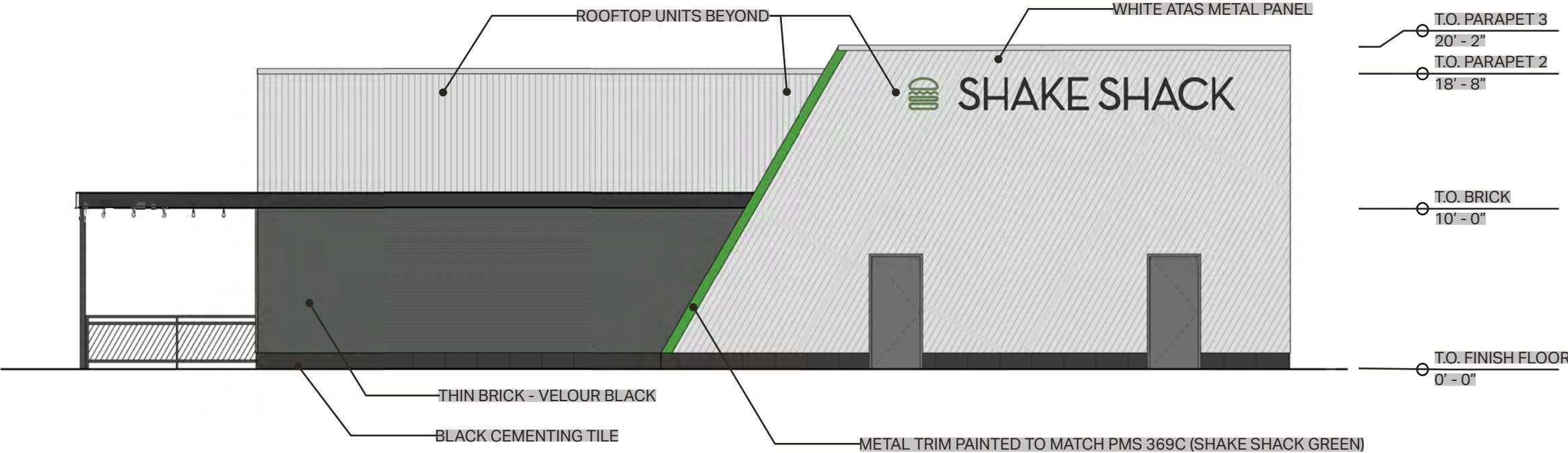
METAL PANEL AREA:	692 SF
TOTAL FACADE AREA:	991 SF
METAL PANEL PERCENT COVERAGE:	69.8%



Back Elevation & Perspective



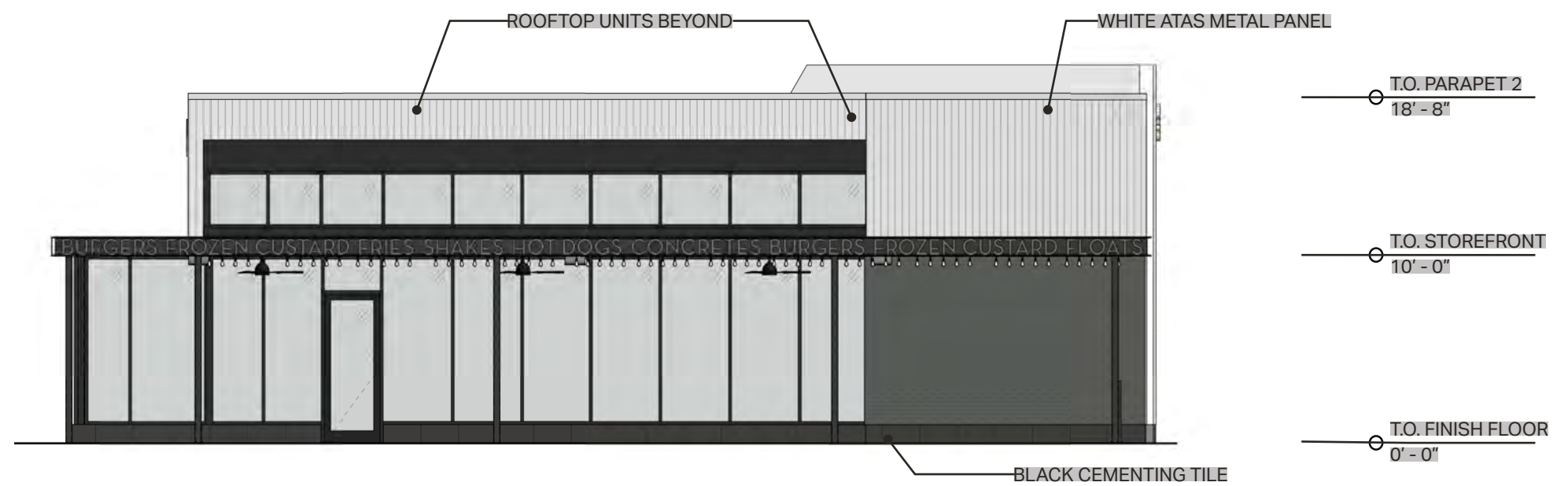
METAL PANEL AREA:	898 SF
TOTAL FACADE AREA:	1242 SF
METAL PANEL PERCENT COVERAGE:	72.3%



Patio Side Elevation & Perspectives



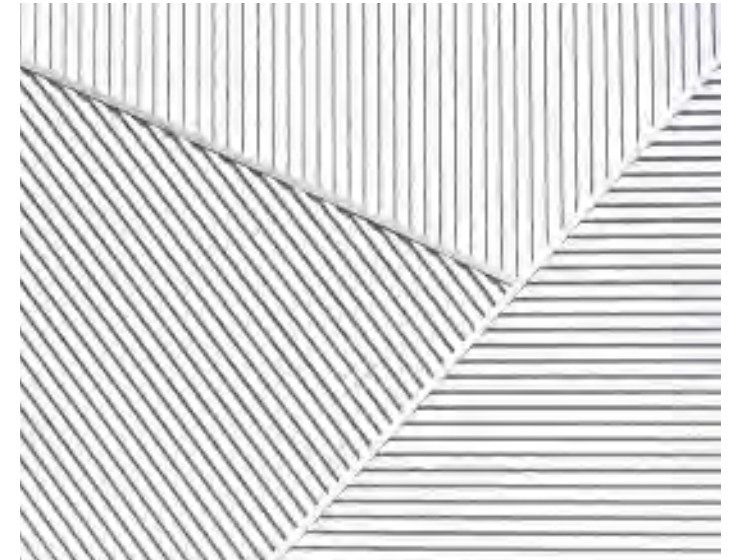
METAL PANEL AREA:	209 SF
TOTAL FACADE AREA:	1034 SF
METAL PANEL PERCENT COVERAGE:	20.2%



Perspectives



Examples



Cut Sheets

ATAS : Opaline - White



SPECIFICATION DATA SHEET

1. PRODUCT NAME

OPALINE™
OPF, OPN, OPM, **OPW**

2. MANUFACTURER

ATAS INTERNATIONAL, INC.
Website: www.atas.com
Email: info@atas.com
Corporate Headquarters:
Allentown, PA 18106
Phone: (800) 468-1441
Western Facility:
Mesa, AZ 85204
Phone: (480) 558-7210

3. PRODUCT DESCRIPTION

Basic Uses:
Opaline panels have a smooth appearance with a concealed clipless fastening system. These panels are typically used for both interior and exterior walls and ceilings.

Composition & Materials:
Standard Offerings: Opaline panels are formed from .032 and .040 aluminum; 24 gauge metallic coated steel.
Special Offerings: 16 oz. or 20 oz. copper may be specified, subject to minimum quantities and lead time.

Sizes:
The OPM045 is a 4½" panel with three 1" wide ribs, 1½" on center. OPF040, OPF060 and OPF080 are 4", 6" and 8" wide panels that create a flush surface. OPN041, OPN061 and OPN081 are 4", 6" and 8" panels with a 1" raised rib. The OPW045, OPW065 and OPW085 are 4½", 6½" and 8½" wide panels with a ½" reveal. Panel lengths are cut to customer specifications, with a minimum of 2' to any transportable length. The OPW and OPF panels produced from .032 aluminum can be lanced for ventilation.

Colors & Finishes:
A choice of over 40 stock colors is available in a 70% PVDF finish. (Request color chart or chips). Custom colors available. An anodized finish is available in Clear Satin or Dark Bronze. Texture may be smooth or embossed. The panel is also available louvered, vented, or perforated.

4. TECHNICAL DATA

70% PVDF based finishes tested by paint supplier for:

- Dry Film Thickness: ASTM D 1005, ASTM D 1400, ASTM D 4138 or ASTM D 5796
- Specular Gloss: ASTM D 523
- Pencil Hardness: ASTM D 3363
- T-Bend Flexibility: ASTM D 4145
- Mandrel Bend Flexibility: ASTM D 522
- Impact Resistance: ASTM D 2794

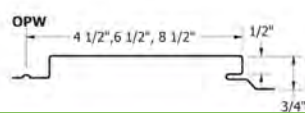
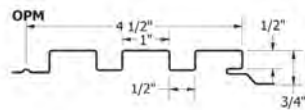
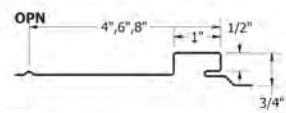
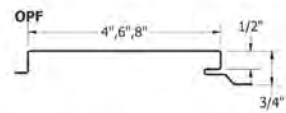
- Adhesion: ASTM D 3359
- Water Immersion Resistance: ASTM D 870
- Abrasion Resistance: ASTM D 968
- Acid Resistance: ASTM D 1308
- Acid Rain Resistance (Kesternich): ASTM G 87 or DIN 50018
- Salt Spray: ASTM B 117
- Cyclic Salt Spray: ASTM D 5894 and ASTM D 5487
- Humidity Resistance: ASTM D 2247
- Accelerated Weathering: ASTM D 822 and ASTM G 23, ASTM G 151 or ASTM G 153
- Color Retention, Florida Exposure: ASTM D 2244
- Chalking Resistance – ASTM D 4214
- Cleveland Condensing Cabinet: ASTM D 4585
- Cure Test, MEK Resistance: ASTM D 5402
- Alkali Resistance, Sodium Hydroxide: ASTM D 1308, Procedure 7.2
- Organic coatings meet requirements of AAMA 2605 when applied to aluminum.

Panel testing/ratings:

- Galvanized Steel: ASTM A 653
- Aluminum: ASTM B 209
- Coil Coating: ASTM A 755
- Field Tested and Approved.
- Load Tables available upon request.
- Florida Product Approval: FL 16083

5. INSTALLATION

Opaline panels are installed on a basic tongue and groove system with mechanical fasteners. The fasteners are hidden by the consecutive panel. Contact ATAS technical service advisors for more information, including details and installation seminars.



6. AVAILABILITY & COST

Availability:
Opaline panels are available through ATAS product distributors. A complete line of related components and trim accessories is available to complete the wall system. In addition, a complete line of rainware and perimeter roof edge trims can be supplied by ATAS to complete the wall system. Flat sheet and/or coil stock are available in matching color for fabrication of related components by the installing contractor.

Cost:
Contact ATAS product distributors for current pricing.

7. WARRANTY

Products coated with a fluoropolymer, 70% PVDF finish carry a limited warranty against chalking and fading.

8. MAINTENANCE

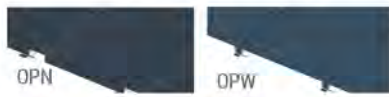
Opaline panels require minimal maintenance. Surface residue may be easily removed by conventional cleaning methods. Minor scratches should be touched up with a matching paint, available from the manufacturer.

9. TECHNICAL SERVICES

Complete technical information and literature are available at www.atas.com. ATAS will assist with design ideas and shop drawings.

10. FILING SYSTEM

- www.atas.com
- Additional product information is available from the manufacturer upon request.

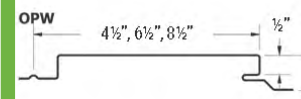
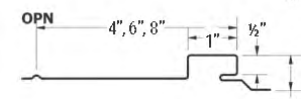
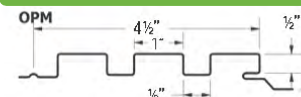
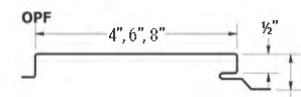
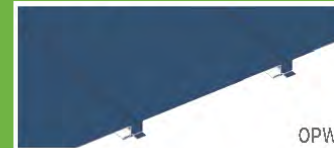
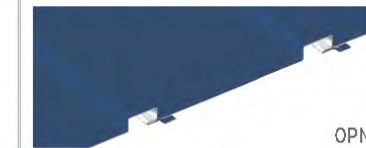
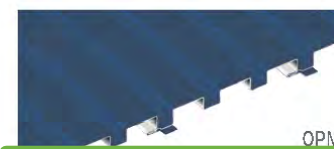
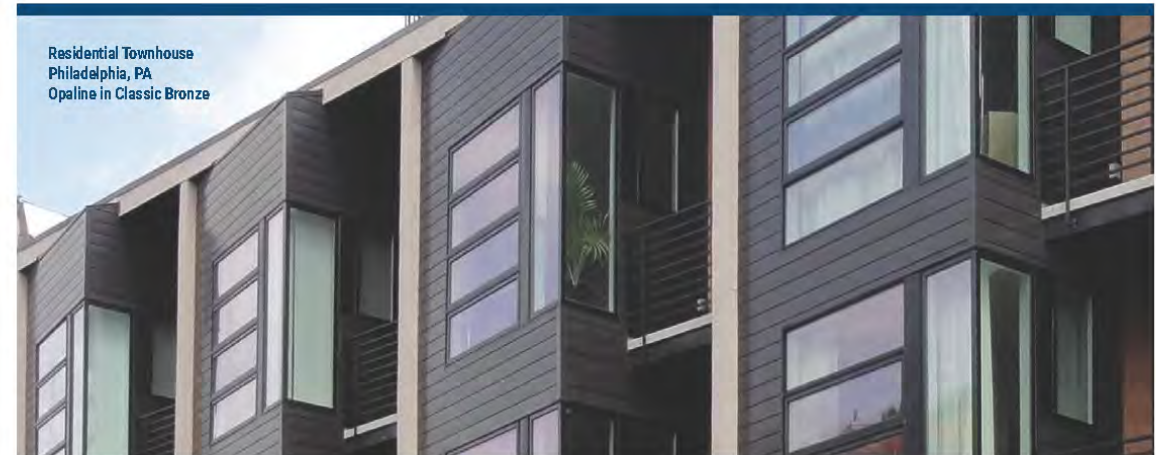


Opaline™ is a trademark of ATAS International, Inc.
© 2020 ATAS International, Inc.

Information contained in item 4 Technical Data may be dependent upon panel material, gauge and width. Please contact ATAS for panel specific test data as applicable for a particular use or application.

LRD0920 LAT752

ULTIMATE DESIGN FLEXIBILITY | OPALINE™



SKU:

OPF, OPM, OPN, OPW

Material:

.032, .040 aluminum;
24 ga. metallic coated steel;
16, 20 oz. copper*

Panel Coverage:

OPF: 4", 6", 8"
OPM: 4½"
OPN: 4", 6", 8"
OPW: 4½", 6½", 8½"

Minimum Panel Length:

1'-6"

Panel Depth:

¾"

Texture:

Smooth or Embossed

* Subject to minimum quantities and extended lead time. Inquire for availability.

Application:

- Structural panel that can be installed on open framing or solid substrate
- Applications include vertical and horizontal fascias, soffits, ceilings or sign bands, alternatives for laminated or extruded panels and EIFS
- Panel can be used in lieu of wide face flanging details

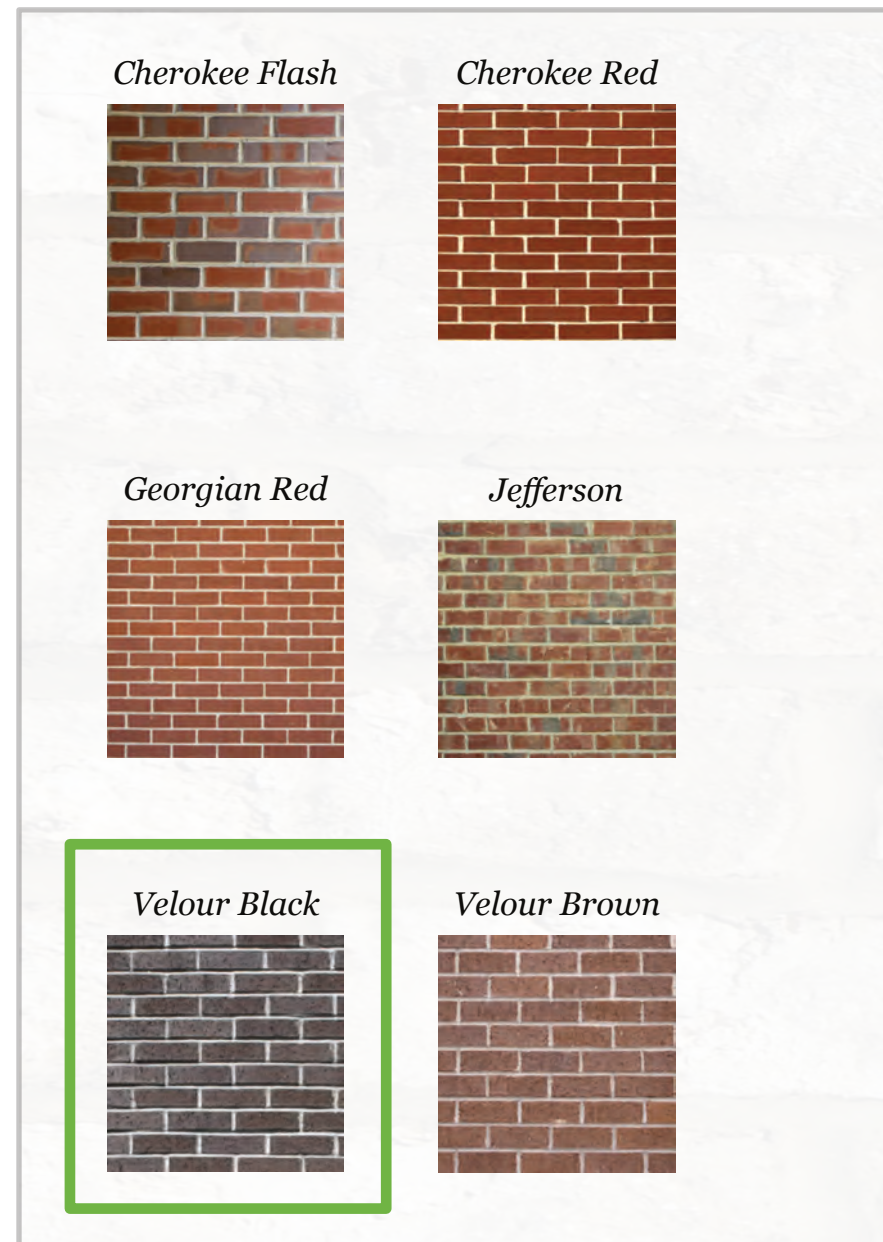
Performance Standards:

- Tested in accordance with ASTM E 330, ASTM E 84 Flame Spread
- FBC Approval

For more information: Visit www.atas.com/opaline

Cut Sheets

Cherokee Brick : Thin Brick - Velour Black



Eldorado Stone : Thin Brick - Chalk Dust

Home / Our Products / Stone / Chalk Dust TundraBrick

Chalk Dust TundraBrick

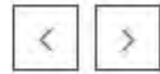
Chalk Dust TundraBrick is a classically-shaped profile with all the surface character you could want. Slightly squared edges are chiseled and worn as if they have braved the elements for decades. Eldorado TundraBrick is roughly 2.5" high and 7.875" long. The Chalk Dust profile is a very popular white thin brick veneer.

Additional information	
Technical information	
Installation information	
Care & Maintenance	
Stocking in	Calgary, Edmonton, Saskatoon, Toronto, Vancouver, Winnipeg
Brand	Eldorado Stone
Colour	Whites & Creams
Style	Craftsman, European, Modern, Rustic, Traditional, Transitional
Short Return	2.875"
Long Return	7.125"
Corner Height	2.5"

Cut Sheets



Home / Our Products / Stone / Chalk Dust TundraBrick



Chalk Dust TundraBrick

Chalk Dust TundraBrick is a classically-shaped profile with all the surface character you could want. Slightly squared edges are chiseled and worn as if they have braved the elements for decades. Eldorado TundraBrick is roughly 2.5" high and 7.875" long. The Chalk Dust profile is a very popular white thin brick veneer.



Additional information

Technical information

Installation information

Care & Maintenance

Stocking in	Calgary, Edmonton, Saskatoon, Toronto, Vancouver, Winnipeg
Brand	Eldorado Stone
Colour	Whites & Creams
Style	Craftsman, European, Modern, Rustic, Traditional, Transitional
Short Return	2.875"
Long Return	7.125"
Corner Height	2.5"

Cut Sheets

Creative Materials Corp: Cementing Tile - Black

CUT SHEET

CEMENTING

creative materials corporation



DESCRIPTION

Cementing is a collection of concrete and metal aesthetics and the subtle nuances that occur within each material. Cementing's palette is a balance of warm and cool colors. The subtle mottling and variation within each color give the concrete and metal aesthetics depth and dimension, allowing you to create beautiful tonal blends or a minimalist style. The collection's décor is a balance of contemporary and traditional design, allowing you to cement this aesthetic into any design genre.

COLORS

AVAILABLE SIZES (ALL RECTIFIED EXCEPT 12"x12")

			48"x48" Not available in Iron or Rust.	48"x96" Not available in Iron or Rust. Honed finish only
White*	Light Grey*	Grey*		
			24"x48"	24"x24"
Taupe	Dark Grey	Black		
			24"x24"	12"x24"
Sand*	Light Brown*	Brown		
			6"x24"	12"x12" *colors indicated only
Beige*	Iron Honed finish only	Rust Honed finish only		

800.207.2967 | sales@creativematerialscorp.com | www.creativematerialscorp.com

Cementing-cut 9/20

CUT SHEET

CEMENTING

creative materials corporation



THICKNESS

9mm

12mm

FINISH

Natural

Honed

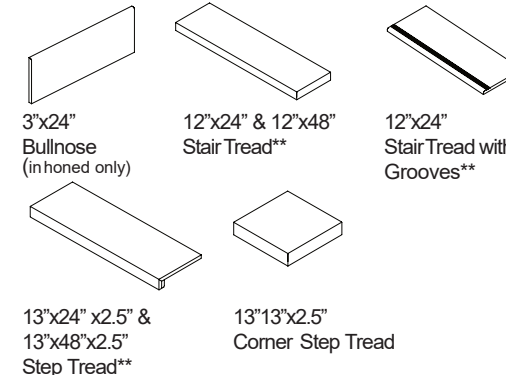
Textured

Natural is 12"x12", 12"x24", 24"x24", and 24"x48"
Honed is all sizes except 12"x12"
Textured is 12x24, 24x24 and 24"x48" only

PATTERNS



TRIM



TECHNICAL DATA*

Specification Reference	Test Method	Test Result
DCOF	ANSI A137.1	≥ 0.42*
Water Absorption	ISO 10545-3	≤ 0.1%
Abrasion Resistance	ISO 10545-7	< 150mm ³
Breaking Strength	ISO 10545-4	≥ 48 N/mm ²

*All technical data was supplied by the manufacturer and is being provided by CMCI for informational purposes only. Exact test results should be requested from your CMCI contact.
*Honed finish does not meet DCOF.



800.207.2967 | sales@creativematerialscorp.com | www.creativematerialscorp.com