

PetSuites of America Preliminary Development Plan

Application #PL2020-243

January 7, 2021



LEE'S SUMMIT
MISSOURI

Yours Truly





Aerial and Zoning Map

Proposed

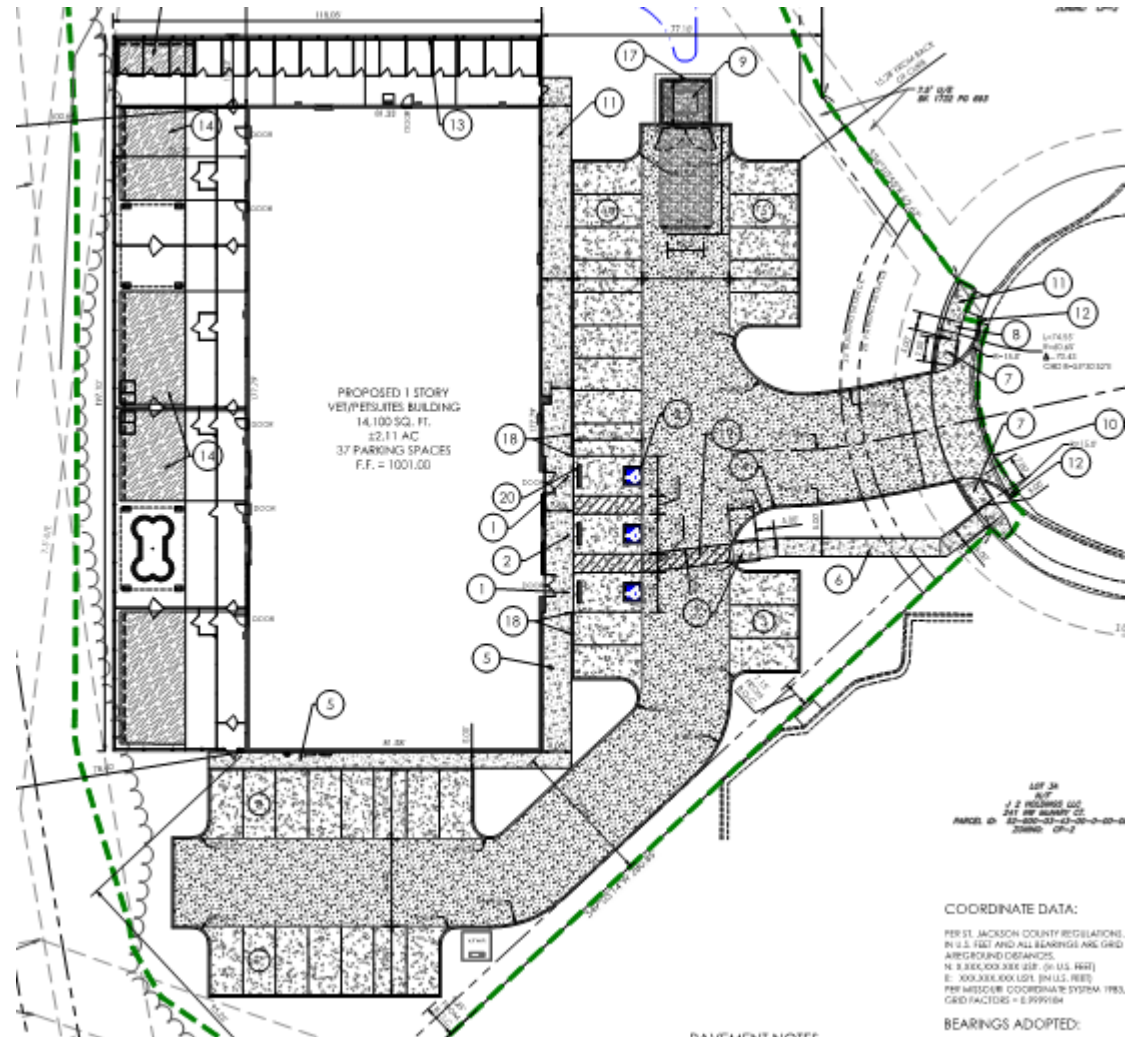
- 2.11 acres
- 0.15 total FAR
- 14,100 sq. ft. bldg. footprint

Land Use

- 33% Impervious
- 67% Pervious

Parking

- 2 handicapped
- 36 Total Parking Spaces



East Main Entrance



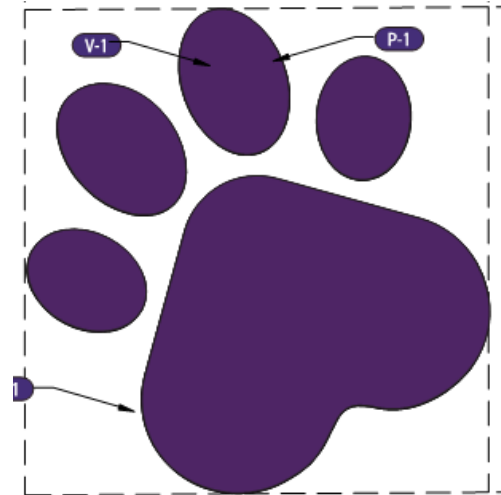
- Brick/Stone Façade

South Veterinary Entrance





VETERINARY
HOSPITAL



LS

Sign Package

- Development shall be in accordance with the site plan dated October 30, 2020.
- Development shall be in accordance with the grading and utility plan dated on November 25, 2020.
- Development shall be in accordance with the landscape plan, dated August 8, 2020.
- The architectural style and building materials for the proposed new building shall be consistent with the building elevations date issued November 5, 2020.