

**Architectural Site Plan (south site)**

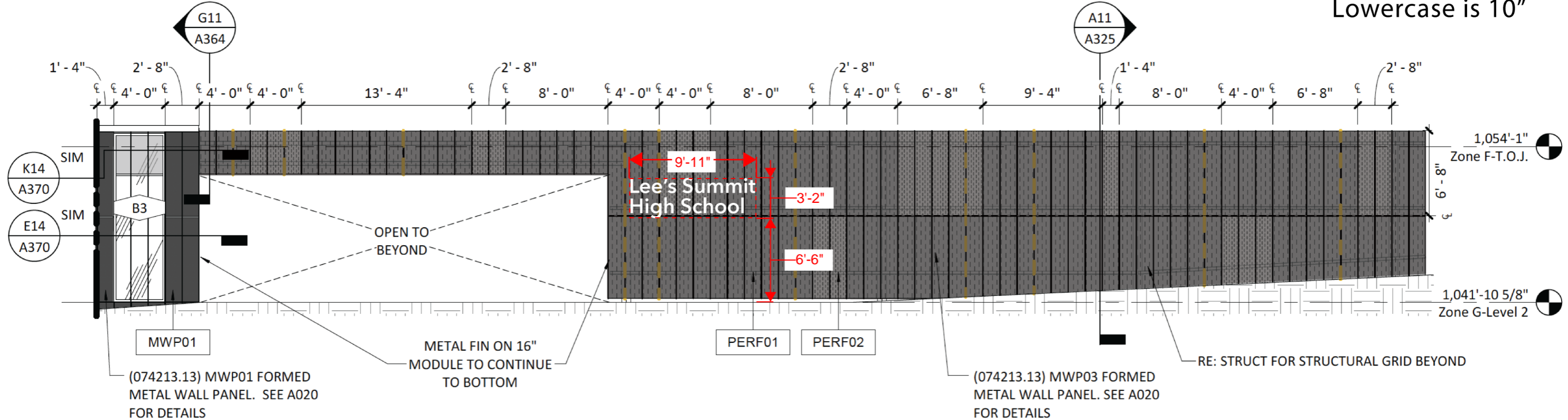
1" = 30'

An architectural rendering of the exterior of Lee's Summit High School. The building features a modern design with a dark, perforated metal facade and vertical yellow accents. Large glass windows are visible on the left side. The school's name, "Lee's Summit High School", is displayed in large, white, sans-serif font on the right side of the building. In the foreground, a paved plaza is populated with several diverse students in various outfits, some walking and some interacting. The scene is set under a bright blue sky with scattered white clouds. Green trees and shrubs are visible on the left side of the building.

Lee's Summit  
High School

**SIGN 1**

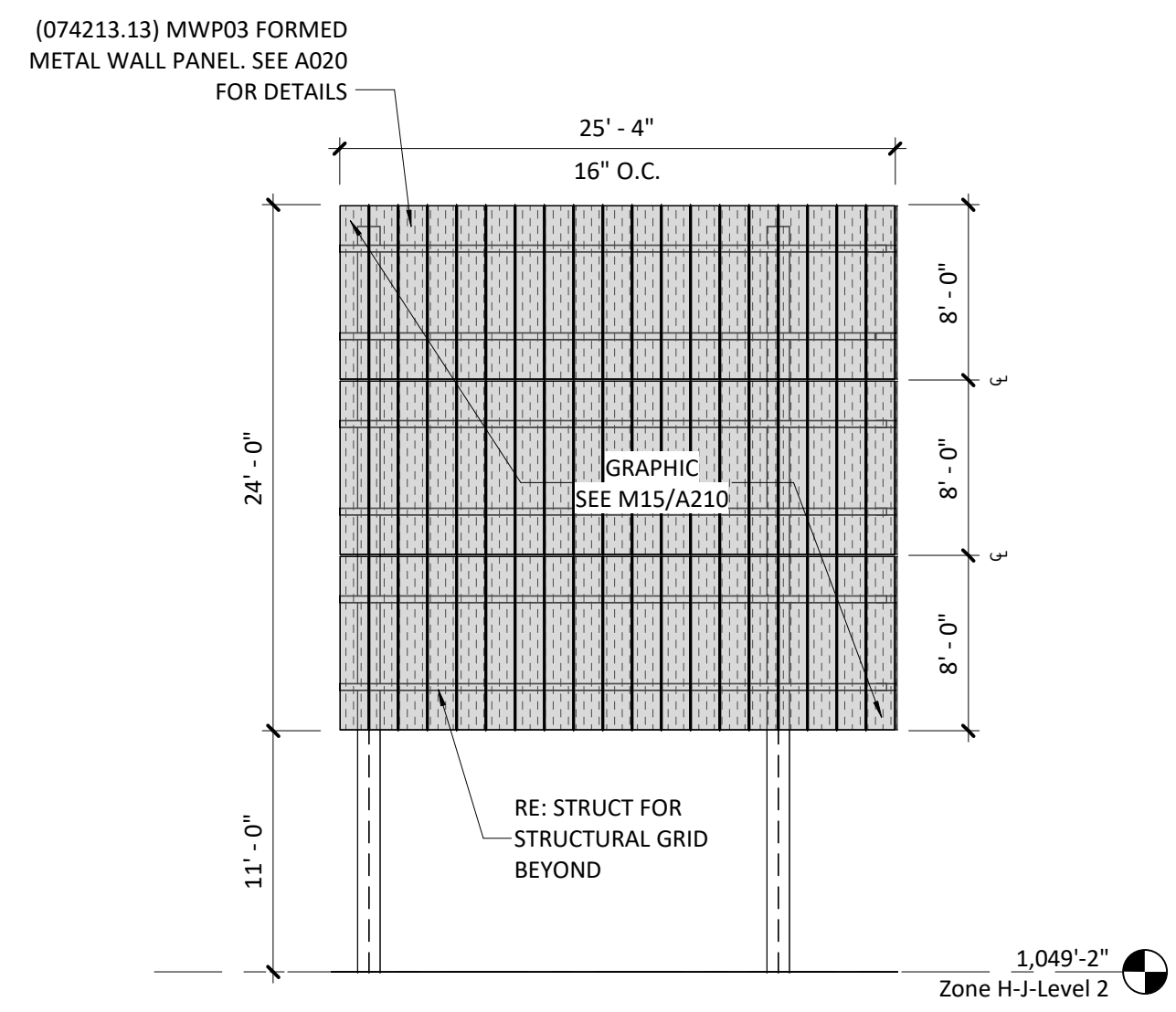
Uppercase is 14"  
Lowercase is 10"



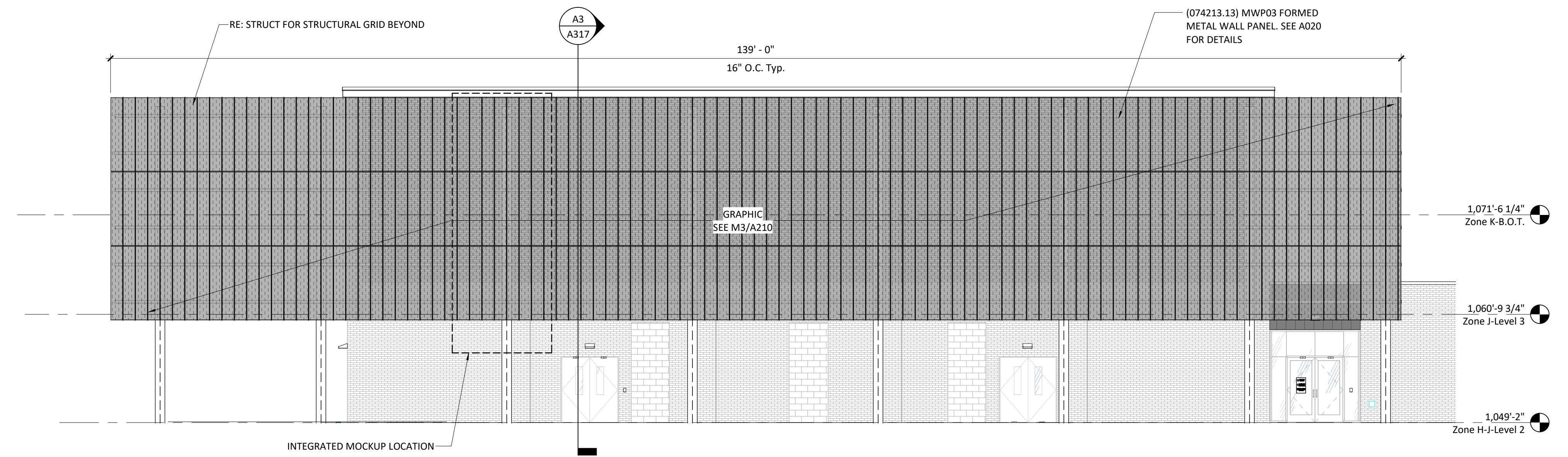
# SIGN 1



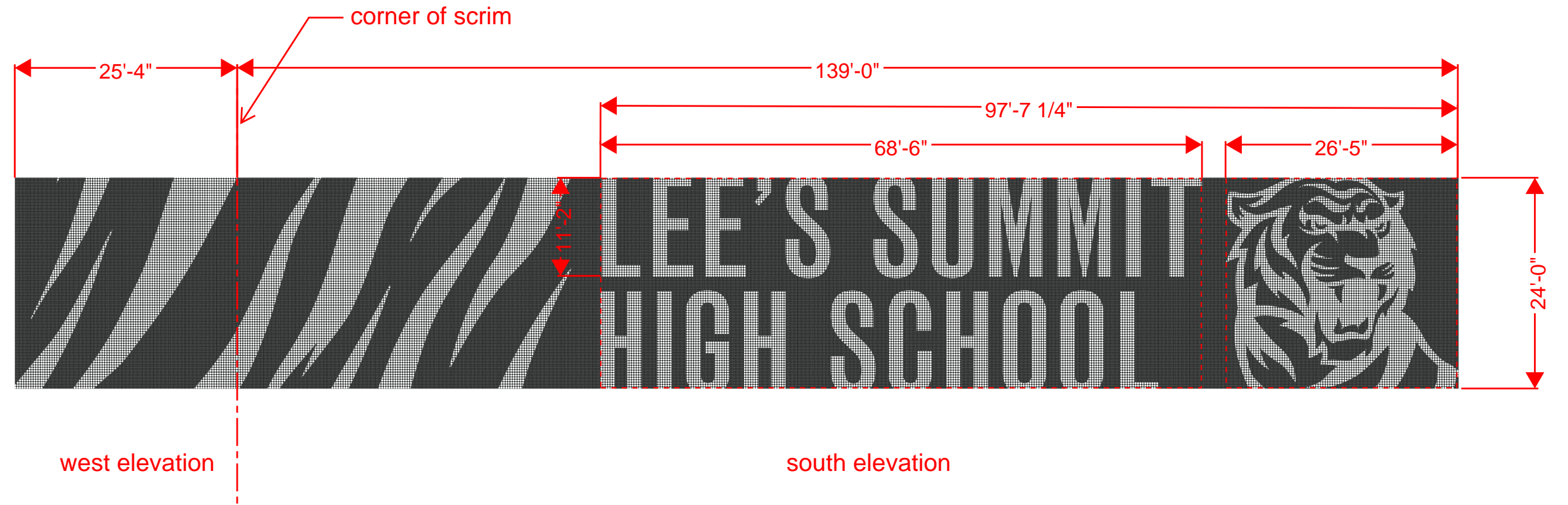
**SIGN 2**



Scrim West  
1/8" = 1'-0"



Scrim South  
1/8" = 1'-0"



# SIGN 2 - GRAPHIC